



## Aftermarket Product Guide



# Quick Reference

# CROSS REFERENCE CHART

## NORTH AMERICAN COMPONENTS

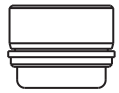
Weasler Cross & Brg. Kit Stock #	Weasler Aftmkt. U-Joint Series	Weasler U-Joint Series	APC/Wesco U-Joint Series	Chainbelt U-Joint Series	G&G U-Joint Series	Neapco U-Joint Series	Rockwell U-Joint Series	Spicer U-Joint Series
200-0100							1FR	
200-0600	6	L6W/6RW	6N 6R	–	6N	L600	L6N	–
200-0675						0675		
200-0700		W						
200-1000								1000
200-1200	12	12RW 12R	12N	R12N R31N/120	12N	1200	L12N	1140
200-1400	14	14R/GN 14NW	14N	R14N/140	14N	2000	L14N	1240
200-1875						1800		
200-2600						2600		1480
200-3500	35	35RW/35R DN/35NW	35N	R35N/350	35N	2200	35N	1340
200-4400	44	44R	44N	440	44R	44R	44R	1440
200-5500	55	L55/55NW 55R	–	–	55N	–	55N	–

QUICK REFERENCE SECTION

## METRIC COMPONENTS

Cross & Bearing R-Kit Stock #	Cross & Bearing E-Kit Stock No.	Interchanges With Bondioli & Pavesi Series	Interchanges With Walterscheid Series
200-6154	201-6154	1	N/A
200-6580	201-6580	5	N/A
200-6794	201-6794	7N	N/A
200-6806	201-6806	8	N/A
200-6908	201-6908	9	N/A
200-7004	201-7004	N/A	2600
200-7155	201-7155	N/A	2100
200-7676	201-7676	N/A	2400
200-7890	N/A	N/A	II
200-7989	201-7989	N/A	2500
200-8261	201-8261	2	2200
200-8370	201-8370	3	I
200-8474	201-8474	4	2300
200-8692	201-8692	6	220
200-8706	201-8706	7 (Old Series)	230
200-7276	201-7276	N/A	2280
200-7491	201-7491	N/A	2380
200-7694	201-7694	N/A	2480

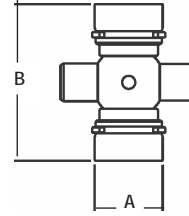
# QUICK REFERENCE for Cross & Bearing Kits



**1** Snap Ring located in the bushing (Internal)



**2** Snap Ring located in the yoke (External)



A - Bearing Diameter  
B - Cap to Cap Length

## NORTH AMERICAN SERIES

WEASLER (R) STOCK No.	WEASLER (E) STOCK No.	SERIES	(R) KIT RATED H/P @ 540 RPM	(E) KIT RATED H/P @ 540 RPM	(R) KIT RATED H/P @1000 RPM	(E) KIT RATED H/P @1000 RPM	(A) BEARING DIAMETER	(B) CAP TO CAP OVERALL LENGTH	SNAP RING TYPE	PAGE No.
200-0100	N/A	Rockwell 1FR	N/A	N/A	N/A	N/A	7/8" (.88)	2 15/16" (2.94)	2	84
200-0600	201-0600	6	14	19	21	29	31/32" (.97)	2 9/32" (2.28)	1	48
200-0675	N/A	0675	16	N/A	24	N/A	15/16" (.94)	2 5/16" (2.31)	1	80
200-0700	N/A	W	N/A	N/A	N/A	N/A	9/16" (.56)	1 1/2" (1.5)	Pin & Block	78
200-1000	N/A	1000	15	N/A	24	N/A	15/16" (.94)	2 23/64" (2.36)	1	81
200-1200	201-1200	12	19	26	29	40	1 1/16" (1.06)	2 1/2" (2.5)	1	53
200-1400	201-1400	14	28	38	44	58	1 1/8" (1.13)	2 5/8" (2.63)	2	58
200-1401	(Interchanges w/ Howse)	14	28	N/A	44	N/A	1 1/8" (1.13)	3 5/32" (3.16)	1	84
200-1875	N/A	1800	30	N/A	48	N/A	1" (1.0)	3 7/32" (3.22)	1	84
200-2600	N/A	2600	100	N/A	144	N/A	1 3/8" (1.38)	4 3/16" (4.19)	2	85
200-3500	201-3500	35	51	70	79	108	1 1/4" (1.25)	3 7/32" (3.22)	2	62
200-3501	(Interchanges w/ Howse)	35	51	N/A	79	N/A	1 1/4" (1.25)	3 7/32" (3.22)	1	84
200-4400	201-4400	44	77	103	119	158	1 5/16" (1.31)	4" (4.0)	1	68
200-5500	201-5500	55	106	137	164	211	1 17/32" (1.53)	4 5/16" (4.31)	2	73
N/A	201-7700	77	N/A	171	N/A	264	1 25/32" (1.78")	4 31/32" (4.96")	2	76

QUICK REFERENCE SECTION

## ITALIAN SERIES

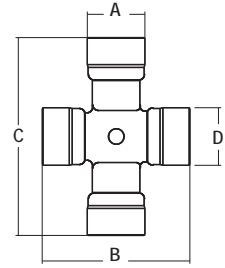
WEASLER (R) STOCK No.	WEASLER (E) STOCK No.	SERIES	(R) KIT RATED H/P @ 540 RPM	(E) KIT RATED H/P @ 540 RPM	(R) KIT RATED H/P @1000 RPM	(E) KIT RATED H/P @1000 RPM	BEARING DIAMETER	CAP TO CAP OVERALL LENGTH	SNAP RING TYPE	PAGE No.
200-6154	201-6154	1	15	19	23	29	22.0 mm (.8661)	54.0 mm (2.126)	2	92
200-8261	201-8261	2	21	25	33	38	23.8 mm (.937)	61.2 mm (2.409)	2	95
200-8370	201-8370	3	29	38	44	58	27.0 mm (1.063)	70.0 mm (2.756)	2	98
200-8474	201-8474	4	36	45	56	70	27.0 mm (1.063)	74.6 mm (2.937)	2	101
200-6580	201-6580	5	52	65	81	100	30.2 mm (1.189)	79.4 mm (3.134)	2	104
200-8692	201-8692	6	64	79	99	122	30.2 mm (1.189)	92.0 mm (3.661)	2	108
200-6794	201-6794	7N	79	94	122	145	34.9 mm (1.374)	94.0 mm (3.701)	2	110
200-6806	201-6806	8	100	120	154	185	34.9 mm (1.374)	106.5 mm (4.193)	2	113
200-6908	201-6908	9	120	151	185	232	41.0 mm (1.614)	108.0 mm (4.252)	2	116

## GERMAN SERIES

WEASLER (R) STOCK No.	WEASLER (E) STOCK No.	SERIES	(R) KIT RATED H/P @ 540 RPM	(E) KIT RATED H/P @ 540 RPM	(R) KIT RATED H/P @1000 RPM	(E) KIT RATED H/P @1000 RPM	BEARING DIAMETER	CAP TO CAP OVERALL LENGTH	SNAP RING TYPE	PAGE No.
200-7155	201-7155	2100	16	19	23	29	22.0 mm (.8661)	54.8 mm (2.158)	2	119
200-8261	201-8261	2200	21	25	33	38	23.8 mm (.937)	61.2 mm (2.409)	2	121
200-8370	201-8370	I	30	38	44	58	27.0 mm (1.063)	70.0 mm (2.756)	2	123
200-8474	201-8474	2300	37	45	56	70	27.0 mm (1.063)	74.6 mm (2.937)	2	125
200-8692	201-8692	220	64	79	99	122	30.2 mm (1.189)	92.0 mm (3.661)	2	128
200-7676	201-7676	2400	53	66	80	102	32.0 mm (1.259)	76.0 mm (2.992)	2	130
200-7989	201-7989	2500	80	94	124	144	36.0 mm (1.417)	88.8 mm (3.496)	2	133
200-7004	201-7004	2600	113	149	175	230	42.0 mm (1.654)	104.0 mm (4.095)	2	136

# Constant Velocity Cross & Bearing Kits

## Quick Reference



### UNEQUAL ARM C.V. KITS

#### 80° NORTH AMERICAN SERIES

WEASLER (R) STOCK No.	WEASLER (E) STOCK No.	CATEGORY	SERIES	(A) BEARING DIAMETER	(B) CAP TO CAP OVERALL LENGTH	(C) CAP TO CAP OVERALL LENGTH	(D) BEARING DIAMETER	PAGE No.
200-1430	201-1430	3	14	1 1/8" (1.13)	2 5/8" (2.63)	4 1/4" (4.25)	1 1/8" (1.13)	146
200-3540	201-3540	4	35	1 1/8" (1.13)	3 7/32" (3.22)	4 1/4" (4.25)	1 1/4" (1.25)	149
200-3545	201-3545	5	35/44	1 1/4" (1.25)	3 7/32" (3.22)	4 5/16" (4.31)	1 1/4" (1.25)	153
200-5556	N/A	6	55	1 5/16" (1.31)	3 23/32" (3.72)	4 5/16" (4.31)	1 17/32" (1.53)	158

#### 80° GERMAN SERIES

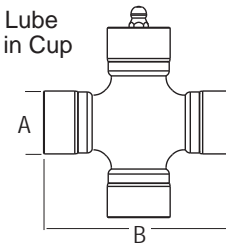
WEASLER (R) STOCK No.	WEASLER (E) STOCK No.	SERIES	(A) BEARING DIAMETER	(B) CAP TO CAP OVERALL LENGTH	(C) CAP TO CAP OVERALL LENGTH	(D) BEARING DIAMETER	PAGE No.
200-7491	201-7491	Metric 2380	27mm (1.063)	74.6mm (2.94)	91mm (3.583)	23.8mm (.737)	166
200-7694	201-7694	Metric 2480	32mm (1.259)	76mm (2.992)	94mm (3.701)	27mm (1.063)	168
200-7906	201-7906	Metric 2580	36mm (1.417)	88.8mm (3.496)	106mm (4.173)	32mm (1.259)	172

#### 80° EQUAL ARM WORLD WIDE C.V. KITS

Equal Arm C.V. Kits are not interchangeable with Unequal Arm C.V. Kits

WEASLER (R) STOCK No.	WEASLER (E) STOCK No.	ASAE CATEGORY	(A) BEARING DIAMETER	(B) CAP TO CAP OVERALL LENGTH
203-0310	204-0310	Cat. 3	27.0mm (1.07)	81.7mm (3.22)
203-8692	204-8692	Cat. 4	30.22mm (1.19)	92.0mm (3.63)
200-5800	201-5800	Cat. 5	30.22mm (1.19)	106.5mm (4.19)
203-6806	204-6806	Cat. 6	34.94mm (1.38)	106.5mm (4.20)

Bushing Lube  
Located in Cup



## NORTH AMERICAN SHAFTING & TUBING

### North American Shaft



Stock Number	Size	Length
400-0012	3/4" Sq.	6'
400-0014	7/8" Sq.	6'
400-0015	1 5/16" Sq.	6'
400-0016	1" Sq.	6'
400-0019	1 3/16" Sq.	6'
400-0021	1 5/16" Sq.	6'
400-1214	3/4" x 7/8" Rect.	6'
400-1618	1" x 1 1/8" Rect.	6'
402-0014	7/8" Hex	6'
402-0016	1" Hex	6'
402-0018	1 1/8" Hex	6'
402-0020	1 1/4" Hex	6'
404-0019	1 3/16" Sq.	3'
404-0021	1 5/16" Sq.	3'
404-1214	3/4" x 7/8" Rect.	3'
404-1615H	1" x 15 Spl. (Induction Hardened)	3'
404-1618	1" x 1 1/8" Rect.	3'
404-2120	1 5/16" x 20 Spl. (Induction Hardened)	3'
404-2720	1 11/16" x 20 Spl. (Induction Hardened)	3'
404-7720	1 7/8" x 20 Spl. (Induction Hardened)	3'

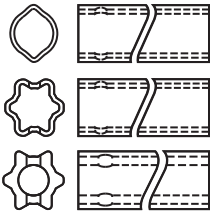
### North American Tube



Stock Number	Size	Length
600-0012	1" Sq. Fits Shaft 3/4" Sq.	6'
600-0015	1 1/4" Sq. (.120 Wall) Fits Shaft 15/16"	6'
600-0016	1 1/4" Sq. (.109 Wall) Fits Shaft 1" Sq.	6'
600-0020	1 5/8" Sq. Fits Shaft 1.25" Sq.	6'
600-1618	1" x 1 x 1/8" Rect. O.D. - Fits Shaft 3/4" x 7/8"	6'
600-2022	1 1/4" x 1 3/8" Rect. O.D. - Fits Shaft 1" x 1 1/8"	6'
602-0600	1 1/2" Rd. (.065 Wall) O.D.	6'
602-1400	2" Rd. (.083 Wall) O.D.	6'
602-2600	2 3/4" Rd. (.109 Wall) O.D.	6'
602-3500	2 1/8" Rd. (.120 Wall) O.D.	6'
602-4400	2 1/2" Rd. (.120 Wall) O.D.	6'
604-0600	1 1/2" Rd. (.065 Wall) O.D.	3'
604-1400	2" Rd. (.083 Wall) O.D.	3'
604-1618	1" x 1 1/8" Rect. O.D. - Fits Shaft 3/4" x 7/8"	3'
604-2022	1 1/4" x 1 3/8" Rect. O.D. - Fits Shaft 1" x 1 1/8"	3'
604-3500	2 1/8" Rd. (.120 Wall) O.D.	3'
604-4400	2 1/2" Rd. (.120 Wall) O.D.	3'

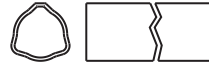
# METRIC PROFILE SHAFTING & TUBING

## GERMAN-STYLE SHAFTING & TUBING



Lemon & Star Profile

## ITALIAN-STYLE SHAFTING & TUBING



Tri-Lobe Profile

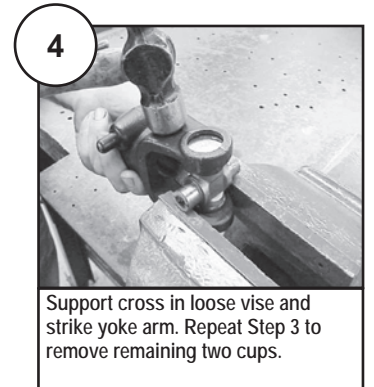
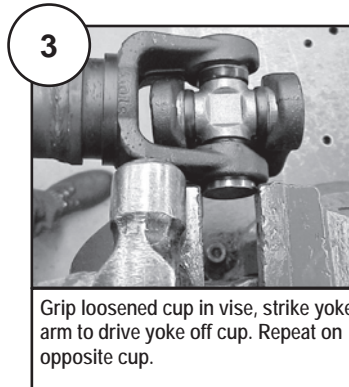
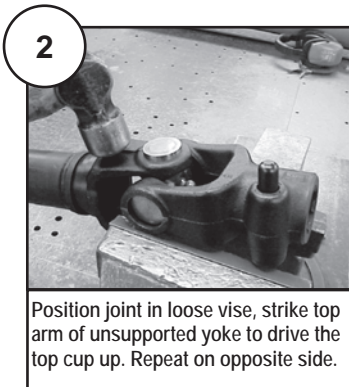
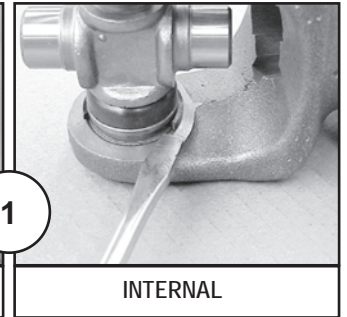
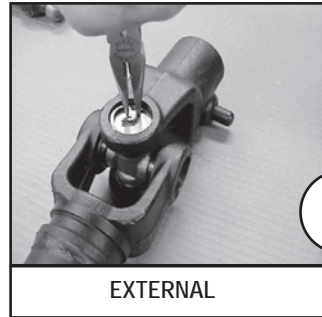
SERIES	STOCK NO.	LENGTH		OUTSIDE DIAMETER		WALL THICKNESS		USE AS	PROFILE
		M	IN.	M	IN.	MM	IN.		
ByPy 1	400-6126	1.5	59.06	26.5	1.024	3.4	.138	Inner	Tri-Lobe
ByPy 1	404-6126	1	39.37	26.5	1.024	3.4	.138	Inner	Tri-Lobe
ByPy 1	600-6133	1.5	59.06	32.5	1.299	2.6	.102	Outer	Tri-Lobe
ByPy 1	604-6133	1	39.37	32.5	1.299	2.6	.102	Outer	Tri-Lobe
ByPy 1	604-6133	1	39.37	32.5	1.299	2.6	.102	Outer	Tri-Lobe
ByPy 2	400-6229	1.5	59.06	29	1.142	4.1	.134	Inner	Tri-Lobe
ByPy 2	404-6229	1	39.37	29	1.142	4.1	.134	Inner	Tri-Lobe
ByPy 2	600-6236	1.5	59.06	36	1.417	3.2	.134	Outer	Tri-Lobe
ByPy 2	604-6236	1	39.37	36	1.417	3.2	.134	Outer	Tri-Lobe
ByPy 3	600-6236	1.5	59.06	36	1.417	3.2	.134	Inner	Tri-Lobe
ByPy 3	604-6236	1	39.37	36	1.417	3.2	.134	Inner	Tri-Lobe
ByPy 3 & 4	600-6343	1.5	59.06	43.5	1.713	3.4	.138	Outer	Tri-Lobe
ByPy 3 & 4	604-6343	1	39.37	43.5	1.713	3.4	.138	Outer	Tri-Lobe
ByPy 4	400-6436	1.5	59.06	36	1.417	3.9	.157	Inner	Tri-Lobe
ByPy 4	404-6436	1	39.37	36	1.417	3.9	.157	Inner	Tri-Lobe
ByPy 5 & 6	400-6545	1.5	59.06	45	1.77	3.9	.150	Inner	Tri-Lobe
ByPy 5 & 6	404-6545	1	39.37	45	1.77	3.9	.150	Inner	Tri-Lobe
ByPy 5	600-6552	1.5	59.06	51.5	2.03	3	.120	Outer	Tri-Lobe
ByPy 5	604-6552	1	39.37	51.5	2.03	3	.120	Outer	Tri-Lobe
ByPy 6 & 7N	600-6654	1.5	59.06	54	2.13	4.5	.180	Outer	Tri-Lobe
ByPy 6 & 7N	604-6654	1	39.37	54	2.13	4.5	.180	Outer	Tri-Lobe
ByPy 7N	400-6745	1.5	59.06	45	1.77	5.4	.210	Inner	Tri-Lobe
ByPy 7N	404-6745	1	39.37	45	1.77	5.4	.210	Inner	Tri-Lobe
ByPy 8	600-6654	1.5	59.06	54	2.13	4.5	.180	Inner	Tri-Lobe
ByPy 8	604-6654	1	39.37	54	2.13	4.5	.180	Inner	Tri-Lobe
ByPy 8 & 9	600-6863	1.5	59.06	63	2.48	4.1	.161	Outer	Tri-Lobe
ByPy 8 & 9	604-6863	1	39.37	63	2.48	4.1	.161	Outer	Tri-Lobe
ByPy 9	400-6954	1.5	59.06	54	2.13	4.9	.190	Inner	Tri-Lobe
ByPy 9	404-6954	1	39.37	54	2.13	4.9	.190	Inner	Tri-Lobe
W/S 2100	400-7123	1.5	59.06	23.5	0.93	SOLID		Inner	Lemon
W/S 2100	404-7123	1	39.37	23.5	0.93			Inner	Lemon
W/S 2100	600-7130	1.5	59.06	30	1.19	2.9	.114	Outer	Lemon
W/S 2100	604-7130	1	39.37	30	1.19	2.9	.114	Outer	Lemon
W/S I, 2200 & 2300	400-7234	1.5	59.06	34.5	1.36	4	.160	Inner	Lemon
W/S I, 2200 & 2300	404-7234	1	39.37	34.5	1.36	4	.160	Inner	Lemon
W/S I, 2200 & 2300	600-7241	1.5	59.06	41	1.61	2.9	.114	Outer	Lemon
W/S I, 2200 & 2300	604-7241	1	39.37	41	1.61	2.9	.110	Outer	Lemon
W/S 2400 & 220/720	400-7539	1.5	59.06	39.5	1.56	4.5	.180	Inner	Lemon
W/S 2400 & 220/720	404-7539	1	39.37	39.5	1.56	4.5	.180	Inner	Lemon
W/S 2400 & 220/720	600-7548	1.5	59.06	48	1.89	3.8	.150	Outer	Lemon
W/S 2400 & 220/720	604-7548	1	39.37	48	1.89	3.8	.150	Outer	Lemon
W/S 2400 & 2500	400-7651	1.5	59.06	51	2.07	6	.240	Inner	Star
W/S 2400 & 2500	404-7651	1	39.37	51	2.07	6	.240	Inner	Star
W/S 2400 & 2500	600-7961	1.5	59.06	61	2.4	4.3	.170	Outer	Star
W/S 2400 & 2500	604-7961	1	39.37	61	2.4	4.3	.170	Outer	Star
W/S 2600	600-7961	1.5	59.06	61	2.4	4.3	.170	Inner	Star
W/S 2600	604-7961	1	39.37	61	2.4	4.3	.170	Inner	Star
W/S 2600	600-7071	1.5	59.06	71.5	2.81	4.9	.190	Outer	Star
W/S 2600	604-7071	1	39.37	71.5	2.81	4.9	.190	Outer	Star

QUICK REFERENCE SECTION

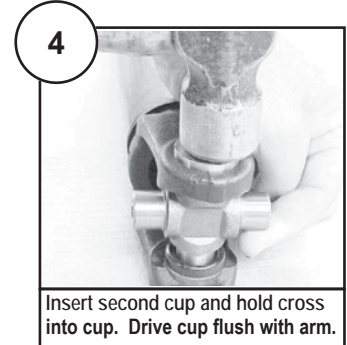
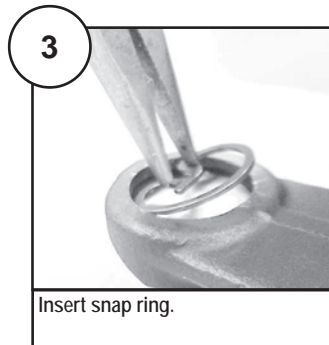
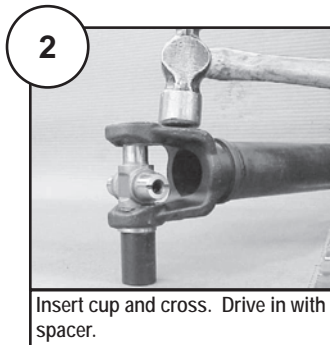
# UNIVERSAL JOINT REPLACEMENT

## TO DISASSEMBLE UNIVERSAL JOINT

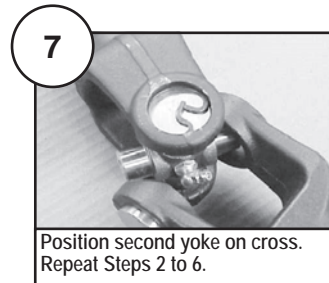
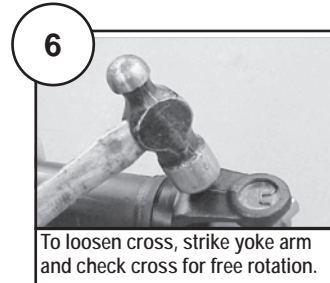
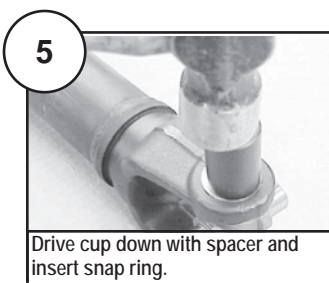
1. Remove all snap rings



## TO REASSEMBLE UNIVERSAL JOINT



*\*Visually inspect the cross and bearing cap, needles and cross for any signs of cracks, wear, fatigue. Weasler highly recommends that upon re-assembly the cross and bearing be replaced and not re-used to ensure safety and maximum life.*



8

LUBRICATE ALL FITTINGS WITH A GOOD QUALITY LITHIUM SOAP COMPATIBLE E.P. GREASE MEETING THE N.L.G.I. #2 SPECIFICATIONS AND CONTAINING NO MORE THAN 1% MOLYBDENUM DISULFIDE.

QUICK REFERENCE SECTION



# EASY LOCK GUARDING SYSTEM



**QUICK REFERENCE SECTION**

## NORTH AMERICAN

SERIES	OLD GUARDS	OLD NYLON BEARING KITS	NEW GUARDS	NEW NYLON BEARING KITS
<b>6</b>	900-0648	920-0600/920-4P15	900-2548	921-0600
	900-0660	920-0600/920-4P15	900-2560	921-0600
<b>W</b>	900-0748	920-0141	900-2548	921-5170
<b>12</b>	900-1248	920-1200/920-4P16	900-2548	921-1200
	900-1260	920-1200/920-4P16	900-2560	921-1200
<b>14</b>	900-1248	920-1200/920-5071	900-2548	921-1200
	900-1260	920-1200/920-5071	900-2560	921-1200
<b>35</b>	900-3548	920-3500/920-5084	900-2548	921-1200
	900-3560	920-3500/920-5084	900-2560	921-1200
<b>44</b>	900-4448	920-4400	902-3548	921-4400
	900-4460	920-4400	902-3560	921-4400
<b>55</b>	900-4448	920-4400	902-3548	921-4400
	900-4460	920-4400	902-3560	921-4400

### PLEASE NOTE!

- Not all guard and nylon bearing systems are interchangeable. When purchasing shaft weld and tube weld yokes or guards, make certain there is a proper fit between nylon bearing raceway in yoke and guard. Make sure guard rotates freely on the yokes.
- The nylon bearings provided are the most popular in the replacement market. If the nylon bearing provided is not a proper fit, it is essential that the proper nylon bearing is identified and installed to insure proper performance and safety. To assist in ordering the proper nylon bearing, listed in this brochure are stock numbers and dimensions for nylon bearings.
- All Series North American guards are provided without nylon bearings. To help assure the proper set of nylon bearings are installed, one nylon bearing set will be exactly the same (nylon bearing raceway dimensions) as has always been provided in our aftermarket guards. The other set will be dimensioned to retrofit the Weasler OEM raceway. Assembly instructions included with these nylon bearing kits.
- **ALL GUARDS ARE PROVIDED WITHOUT NYLON BEARINGS - ORDER NYLON BEARINGS SEPARATELY**

# EASY LOCK GUARDING SYSTEM

## METRIC

QUICK REFERENCE SECTION

INTERCHANGES with SERIES	OLD GUARDS	OLD NYLON BEARING KITS	NEW GUARDS	NEW NYLON BEARING KITS
<b>BYPY 1</b>	900-8134	960-0101	900-2548	961-5029
	900-8148	960-0101	900-2548	961-5029
	900-8154	960-0101	900-2560	961-5029
<b>BYPY 2</b>	900-8234	960-0202	900-2548	961-2502
	900-8248	960-0202	900-2548	961-2502
	900-8254	960-0202	900-2560	961-2502
<b>BYPY 3 &amp; 4</b>	900-8234	960-0234	900-2548	961-2534
	900-8248	960-0234	900-2548	961-2534
	900-8254	960-0234	900-2560	961-2534
<b>BYPY 5</b>	900-8534	960-0305	902-3548	961-3505
	900-8548	960-0305	902-3548	961-3505
	900-8554	960-0305	902-3560	961-3505
<b>BYPY 6</b>	900-8634	960-0467	902-3548	961-3567
	900-8648	960-0467	902-3548	961-3567
	900-8254	960-0467	902-3560	961-3567
<b>BYPY 7</b>	900-8634	960-0467	902-3548	961-3567
	900-8648	960-0467	902-3548	961-3567
	900-8654	960-0467	902-3560	961-3567
<b>BYPY 8 &amp; 9</b>	900-6934	960-0489	900-4548	961-4589
	900-6948	960-0489	900-4548	961-4589
	900-6954	960-0489	900-4560	961-4589
<b>W/S 2100 (AW10)</b>	900-8134	960-0105	900-2548	961-5005
	900-8148	960-0105	900-2548	961-5005
	900-8154	960-0105	900-2560	961-5005
<b>W/S (AW20) &amp; W/S I (AWII)</b>	900-8234	960-0215	900-2548	961-0251
	900-8248	960-0215	900-2548	961-0251
	900-8254	960-0215	900-2560	961-0251
<b>W/S 2300 (AW21)</b>	900-8234	960-0215	900-2548	961-0251
	900-8248	960-0215	900-2548	961-0251
	900-8254	960-0215	900-2560	961-0251
<b>W/S 220 (AW22), W/S 2400 (AW35) &amp; W/S 2500 (AW36)</b>	900-8534	960-0325	902-3548	961-3525
	900-8548	960-0325	902-3548	961-3525
	900-8554	960-0325	902-3560	961-3525
<b>W/S 2600 (AW26)</b>	900-8634	960-0435	900-4548	961-4535
	900-8648	960-0435	900-4548	961-4535
	900-8654	960-0435	900-4560	961-4535



# EASY LOCK GUARDING SYSTEM

## NYLON BEARING REPAIR KITS

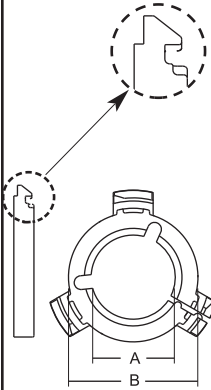
### TYPE A - FITS 250 GUARDS

#### NORTH AMERICAN SERIES

STOCK No.	SERIES	GUARD TYPE	DIM A INNER BRG. ID	DIM B INNER BRG. OD	DIM A OUTER BRG. ID	DIM B OUTER BRG. OD
921-0600	6	250	46.4-mm (1.83")	71.4-mm (2.81")	46.4-mm (1.83")	71.4-mm (2.81")
921-1200	12, 14 & 35	250	52.8-mm (2.08")	71.4-mm (2.81")	51.3-mm (2.02")	71.4-mm (2.81")
921-5170	W	250	41.8-mm (1.65")	71.4-mm (2.81")	41.8-mm (1.65")	71.4-mm (2.81")

#### METRIC SERIES

STOCK No.	INTERCHANGES W/SERIES	GUARD TYPE	DIM A INNER BRG. ID	DIM B INNER BRG. OD	DIM A OUTER BRG. ID	DIM B OUTER BRG. OD
961-5029	ByPy 1	250	34.5-mm (1.36")	71.4-mm (2.81")	40.4-mm (1.59")	71.4-mm (2.81")
961-2502	ByPy 2	250	40.4-mm (1.59")	71.4-mm (2.81")	47.4-mm (1.87")	71.4-mm (2.81")
961-2534	ByPy 3 & 4	250	47.4-mm (1.87")	71.4-mm (2.81")	53.4-mm (2.10")	71.4-mm (2.81")
961-5005	W/S 2100	250	41.4-mm (1.63")	71.4-mm (2.81")	41.4-mm (1.63")	71.4-mm (2.81")
961-0251	W/S 2200, W/S I & W/S 2300	250	50.8-mm (2.00")	71.4-mm (2.81")	50.8-mm (2.00")	71.4-mm (2.81")



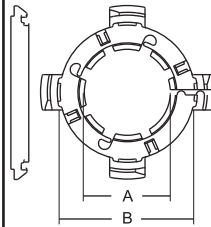
### TYPE B - FITS 350/450 GUARDS

#### NORTH AMERICAN SERIES

STOCK No.	SERIES	GUARD TYPE	DIM A INNER BRG. ID	DIM B INNER BRG. OD	DIM A OUTER BRG. ID	DIM B OUTER BRG. OD
921-4400	44 & 55	350	67.2-mm (2.65")	83.6-mm (3.29")	67.2-mm (2.65")	83.6-mm (3.29")

#### METRIC SERIES

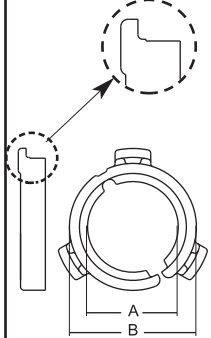
STOCK No.	INTERCHANGES W/SERIES	GUARD TYPE	DIM A INNER BRG. ID	DIM B INNER BRG. OD	DIM A OUTER BRG. ID	DIM B OUTER BRG. OD
961-3505	ByPy 5	350	53.5-mm (2.11")	83.6-mm (3.29")	62.7-mm (2.47")	83.6-mm (3.29")
961-3567	ByPy 6 & 7	350	59.4-mm (2.34")	83.6-mm (3.29")	68.4-mm (2.69")	83.6-mm (3.29")
961-4589	ByPy 8 & 9	450	68.4-mm (2.69")	103-mm (4.06")	80.4-mm (3.17")	103-mm (4.06")
961-3525	W/S 220, W/S 2400, & W/S 2500	350	62.5-mm (2.46")	83-mm (3.27")	62.5-mm (2.46")	83-mm (3.27")
961-4535	W/S 2600	450	82.8-mm (3.26")	103-mm (4.05")	82.8-mm (3.26")	103-mm (4.05")



### TYPE C

#### PREVIOUS-STYLE METRIC NYLON BEARING KIT

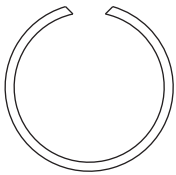
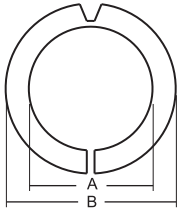
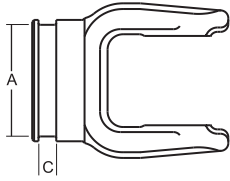
INTERCHANGES W/ STOCK No.	SERIES	DIM A INNER BRG. ID	DIM B INNER BRG. OD	DIM A OUTER BRG. ID	DIM B OUTER BRG. OD
960-0101	ByPy 1	34.8-mm (1.37")	57-mm (2.24")	40.8-mm (1.61")	57-mm (2.24")
960-0202	ByPy 2	40.4-mm (1.59")	71.4-mm (2.81")	47.4-mm (1.87")	71.4-mm (2.81")
960-0234	ByPy 3 & 4	47.4-mm (1.87")	71.4-mm (2.81")	53.4-mm (2.10")	71.4-mm (2.81")
960-0305	ByPy 5	53.4-mm (2.10")	81.7-mm (3.22")	62.7-mm (2.47")	81.7-mm (3.22")
960-0467	ByPy 6 & 7	59.4-mm (2.34")	98.8-mm (3.89")	68.4-mm (2.69")	98.8-mm (3.89")
960-0489	ByPy 8 & 9	68.4-mm (2.69")	98.8-mm (3.89")	80.4-mm (3.17")	98.8-mm (3.89")
960-0105	W/S 2100	41.4-mm (1.63")	57-mm ((2.24")	41.4-mm (1.63")	57-mm (2.24")
960-0215	W/S 2200, AW11, & W/S 2300	50.8-mm (2.00")	71.4-mm (2.81")	50.8-mm (2.00")	71.4-mm (2.81")
960-0325	W/S 220, W/S 2400, & W/S 2500	62.7-mm (2.47")	81.7-mm (3.22)	62.7-mm (2.47")	81.7-mm (3.22")
960-0435	W/S 2600	82.8-mm (3.26")	98.8-mm (3.89")	82.8-mm (3.26")	98.8-mm (3.89")



QUICK REFERENCE SECTION

# EASY LOCK GUARDING SYSTEM

## PREVIOUS-STYLE NORTH AMERICAN NYLON BEARING KIT



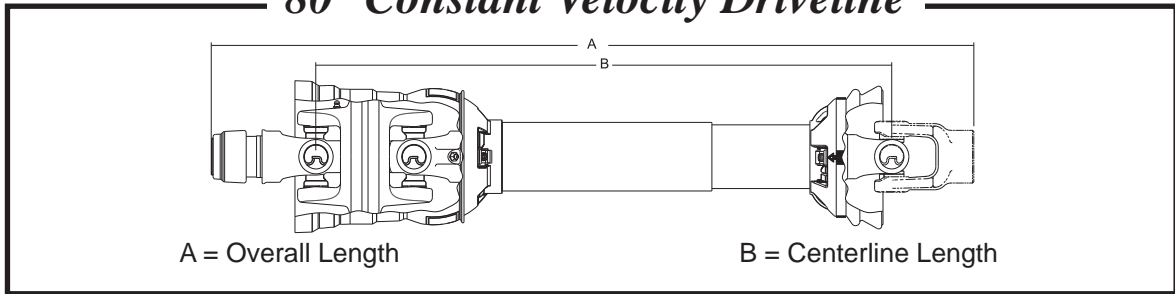
METAL RETAINING RING

STOCK NUMBER	DIM A		DIM B		DIM C	
	YOKE RACEWAY O.D.	NYLON BEARING I.D.	NYLON BEARING O.D.	YOKE RACEWAY WIDTH	NYLON BEARING WIDTH	
920-0017	2.15"	(2 5/32")	2.76"	(2 3/4")	.36"	(23/64")
920-0069	1.77"	(1 49/64")	2.76"	(2 3/4")	.36"	(23/64")
920-0085	2.02"	(2 1/64")	2.76"	(2 3/4")	.36"	(23/64")
920-0141	1.65"	(1 21/32")	2.76"	(2 3/4")	.36"	(23/64")
920-0165	2.15"	(2 5/32")	3.26"	(3 17/64")	.36"	(23/64")
920-0195	1.78"	(1 25/32")	2.52"	(2 33/64")	.37"	(3/8")
920-0259	2.03"	(2 1/32")	3.26"	(3 17/64")	.36"	(23/64")
920-0260	1.39"	(1 25/64")	2.77"	(2 49/64")	.36"	(23/64")
920-0600	1.83"	(1 53/64")	2.76"	(2 3/4")	.25"	(1/4")
920-1200	2.09"	(2 3/32")	2.77"	(2 49/64")	.32"	(21/64")
920-3500	2.08"	(2 5/64")	2.76"	(2 3/4")	.32"	(21/64")
920-4400	2.65"	(2 21/32")	3.26"	(3 17/64")	.36"	(23/64")
920-5071	2.02"	(2 1/64")	2.76"	(2 3/4")	.36"	(23/64")

(Kit includes nylon bearing and metal retaining ring)

QUICK REFERENCE SECTION

### 80° Constant Velocity Driveline



### Constant Velocity Driveline Replacement Chart

ASAE Category	Weasler Series	Replacement For
3	14	Bondioli & Pavesi 4 Series Walterscheid 2380 Series
4	35	Bondioli & Pavesi 5 Series
5	35/44	Bondioli & Pavesi 6 Series Walterscheid 2480 Series
6	55	Bondioli & Pavesi 8 Series Walterscheid 2580 Series & 2680 Series

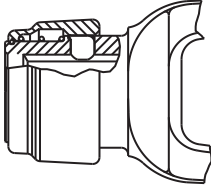
The above chart lists the approximate size replacement for Constant Velocity Drivelines. These are not an exact interchange, and should be used as a general replacement guide only. NOTE: 35/44 refers to CV Series. When CV is assembled with 44 Series tube end driveline becomes a 44 Series. When CV is assembled with a 35 Series tube end driveline is a 35 Series.

# 1000 Series CROSS REFERENCE

NEAPCO PART NO.	WEASLER STOCK NO.	SPICER PART NO.	WEASLER STOCK NO.
-	802-1015	-	300-1000
-	802-1016	-	700-1000
-	10001-1036	-	10001-1044
1-0170	200-1000	-	802-1016
10-0322	10001-1014	-	802-1020
10-0333	10001-1012	-	10001-1034
10-0383	10001-1007	-	10001-1042
10-0411	801-1018	-	10001-1043
10-0412	804-1014	-	10001-1037
10-0413	10001-1045	-	10001-1035
10-0422	804-1012	-	10001-1036
10-0423	10001-1056	-	806-1013
10-0452	804-1016	-	10001-1061
10-0463 or 10-4453	10001-1049	-	806-1019
10-0473	800-1015	10-3-122X	10001-1015
10-0483	800-1016	10-3-163X	10001-1013
10-0493	10001-1051	10-3-183X	10001-1062
10-1532	10001-1034	10-3-22X	10001-1014
10-1557	10001-1037	10-3-33X	10001-1012
10-1574	806-1019	10-3-51X	812-1020
10-1702	10001-1039	10-3-83X	10001-1007
10-1703	10001-1040	10-4-110X	102-1006
10-1705	10001-1041	10-4-103	10001-1053
10-1707	10001-1043	10-4-11	801-1018
10-1708	10001-1044	10-4-113	10001-1052
10-1765	812-1020	10-4-12	804-1014
10-3122	10001-1015	10-4-123	10001-1054
10-3163	10001-1013	10-4-13 or 10-4-133	10001-1045
10-3183	10001-1062	10-4-153	800-1019
10-4123	10001-1055	10-4-163	800-1017
10-4139	102-1006	10-4-183	10001-1058
10-4143	10001-1053	10-4-193	10001-1055
10-4153	800-1019	10-4-22	804-1012
10-4163	800-1017	10-4-23	10001-1056
10-4173	800-1013	10-4-293	10001-1060
10-4183	10001-1058	10-4-373	800-1010
10-4193	10001-1054	10-4-43	800-1013
10-4293	10001-1060	10-4-443	10001-1059
10-4363	802-1020	10-4-453 or 10-4-253	10001-1049
10-4373	800-1010	10-4-481	801-1013
10-4443	10001-1059	10-4-52	804-1016
10-4473	10001-1052	10-4-53	10001-1057
10-4481	801-1013	10-4-573	10001-1051
10-4573 or 10-4493	10001-1033	10-4-63	10001-1048
10-4693	10001-1038	10-4-643	802-1015
10-4943	10001-1057	10-4-693	10001-1038
10-5113	10001-1048	10-4-703	10001-1040
10-5129	300-1000	10-4-713	10001-1039
10-5131	700-1000	10-4-723	10001-1041
10-5149	10001-1035	10-4-73	800-1015
10-5216	10001-1061	10-4-83	800-1016
10-5313	806-1013	10-4-93	10001-1033
10-5354	10001-1042	HM170	200-1000

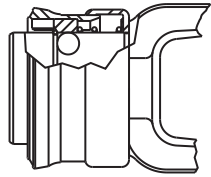
**QUICK REFERENCE SECTION**

## Locking Device



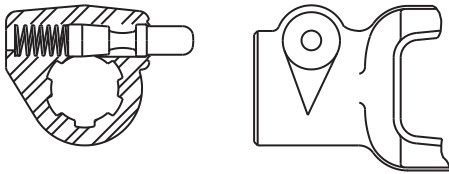
### Safety Slide Lock

An exclusive Weasler replacement component, the Safety Slide Lock\* yoke is locked in place by two hardened pawls with compound radii that conform to the groove in the shaft for full contact. The device is particularly applicable where there is appreciable end thrust.



### Spring Lok

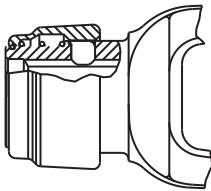
The collar is spring loaded for ease of installation and positive locking to tractor shaft.



### Quick Disconnect

A smooth plunger eliminates sharp projections such as x-washers. Trails rather than leads rotation.

## Locking Device Repair Kit



### \*Auto-Lok/Safety Slide Lock

Stock No. 13004000

Repair Kit for Weasler Auto-Lok and Safety Slide Lock  
6 Spline & 21 Spline

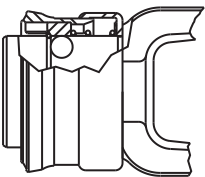
Stock No. 13004020

Repair Kit for Weasler Auto-Lok and Safety Slide Lock  
20 Spline

Stock No. 13004015

Repair Kit for  
1" x 15 Spline

\*This repair kit contains both balls & pawls. When repairing the "Safety Slide Lock" use the pawls only and discard the balls. When repairing the "Auto-Lok" use both the balls and the pawls.



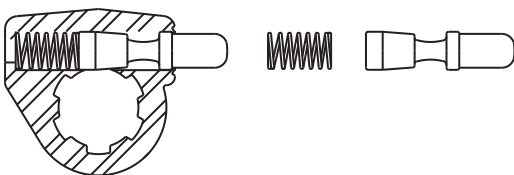
### Spring Lok

Stock No. 13003100

Repair Kit for Weasler Spring-Lok  
6 Spline & 21 Spline

Stock No. 13003115

1" x 15 Spline



### Quick Disconnect

Stock No. 13002006

Repair Kit for Weasler  
and Rockwell 6 Spline

Stock No. 13002806

Repair Kit for 1 3/4" x 6 Spl.

Stock No. 13002021

Weasler 21 Spline and  
Hex Quick Disconnect

Stock No. 13002020

Weasler 20 Spline

## CONVERSION TABLE

1 inch	=	25.4 mm	1 HP	=	0.746 kW
1 mm	=	0.0394 inch	1 kW	=	1.341 HP
1 lb	=	4.44 N	1 Kg	=	2.305 lb
1 N	=	0.225 lb	1 lb	=	0.454 Kg
1 in•lb	=	0.113 Nm	1 ft•lb	=	1.356 Nm
1 Nm	=	0.738 ft•lb	1 M	=	1000 mm
1 Nm	=	8.85 in•lb	1 ft	=	12 inches
			1 kW	=	1000 Watts

## STANDARD UNIT CONVERSION

Power (HP)	=	$\frac{\text{Torque (in}\cdot\text{lb)} \times \text{Shaft Speed (RPM)}}{63,000}$
Torque (in•lb)	=	$\frac{\text{Power (HP)} \times 63,000}{\text{Shaft Speed (RPM)}}$

## METRIC UNIT CONVERSION

Power (kW)	=	$\frac{\text{Torque (Nm)} \times \text{Shaft Speed (RPM)}}{0.00955}$
Torque (Nm)	=	$\frac{\text{Power (kW)} \times 0.00955}{\text{Shaft Speed (RPM)}}$