



Aftermarket Product Guide



North American

Drivelines and Components

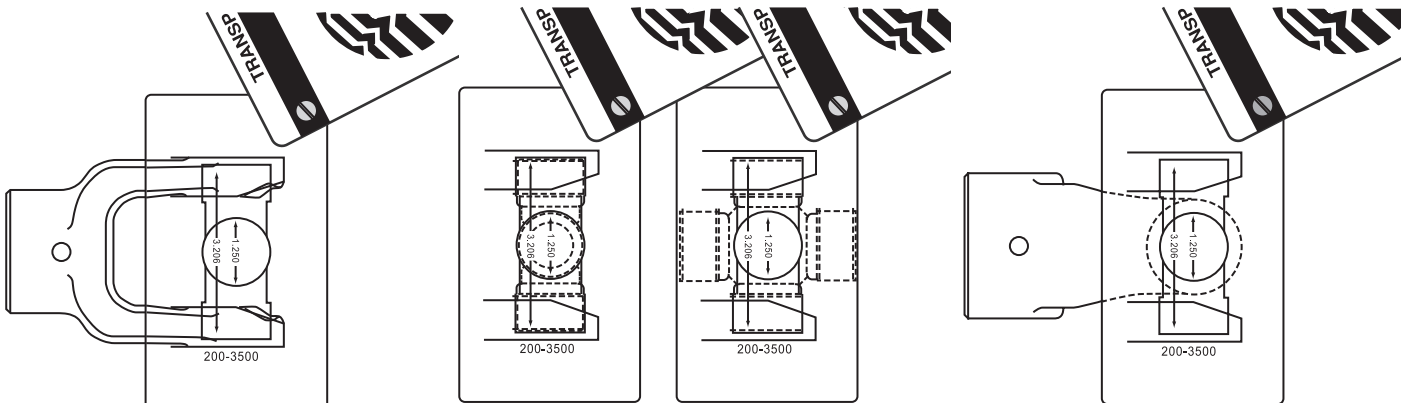
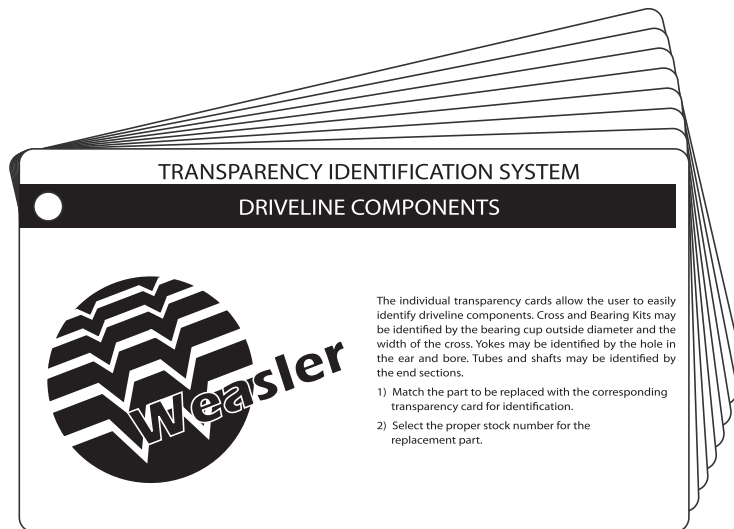
TRANSPARENCY IDENTIFICATION SYSTEM

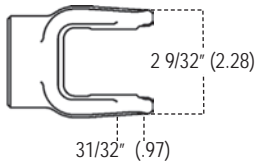
for Driveline Components
(Stock No. 12002500)

The individual transparency cards will allow the user to easily identify driveline components. Cross and Bearing Kits may be identified by the bearing cap outside diameter and the width of the cross. Yokes may be identified by the hole in the ear and profile. Tubes and shafts may be identified by the end sections.

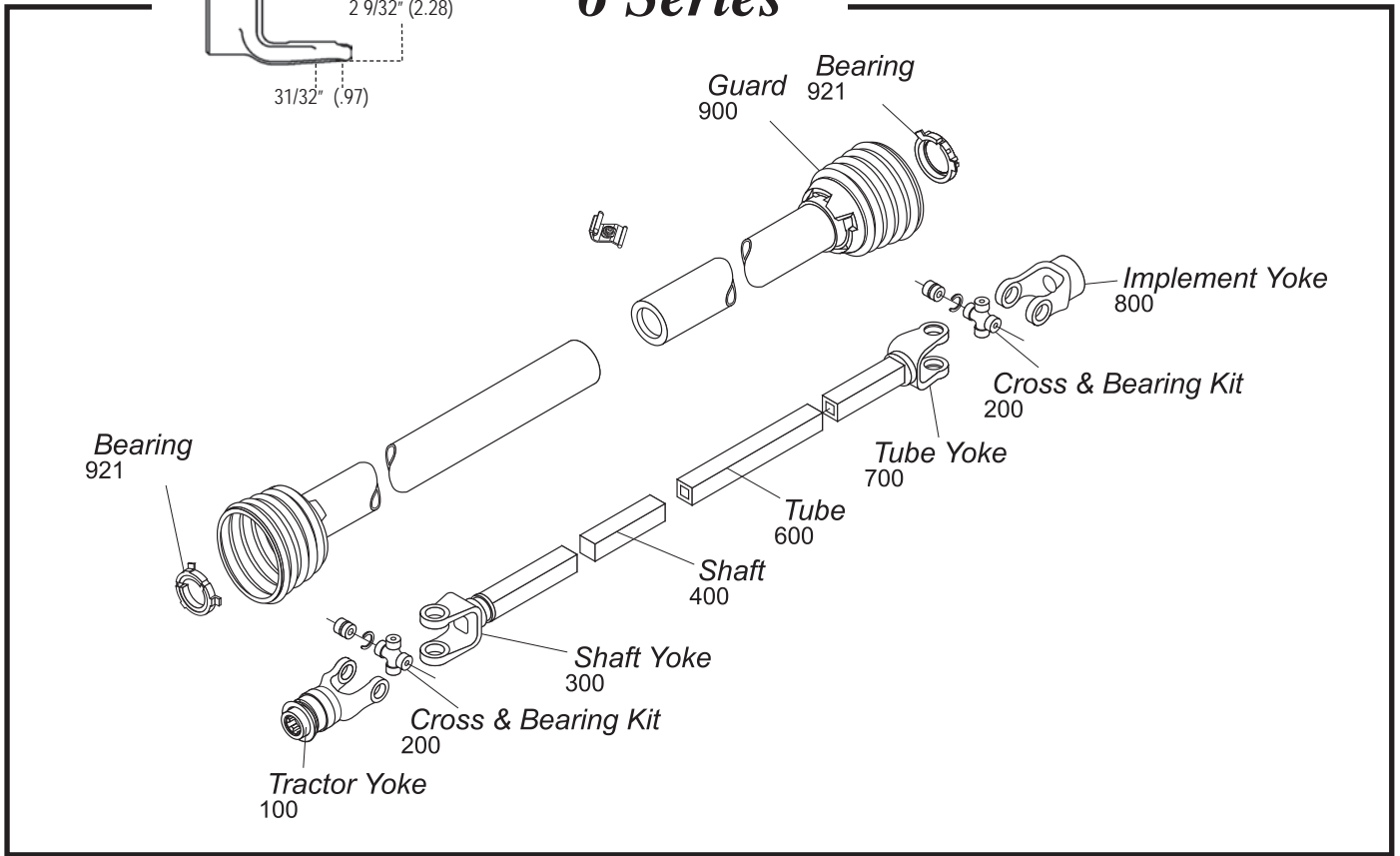
How to use the Transparency Identification System:

1. Match the part to be replaced with the corresponding transparency card for identification.
2. Select the proper stock number for the replacement part.

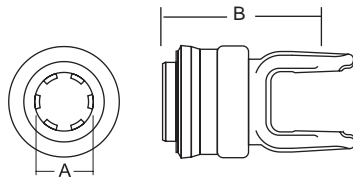




6 Series



Tractor Yoke



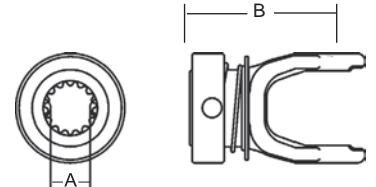
Spring-Lok

Repair Kit — 13003100

Stock Number	Dim. "A" Bore	Dim. "B"
100-0606	1 3/8" x 6 Spl.	3 7/8"
100-0621	1 3/8" x 21 Spl.	3 7/8"

Spring-Lok (metal collar) Lawn & Garden

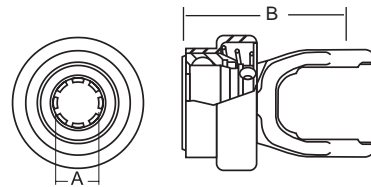
Repair Kit — 13003115



Stock Number	Dim. "A" Bore	Dim. "B"
105-0610	.98" x 10 Spl.	2 3/4"
105-0615	1" x 15 Spl.	2 3/4"

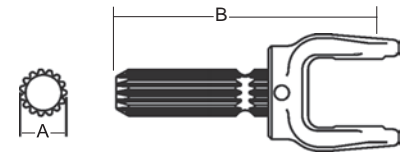
Auto-Lok

Repair Kit — 13004015



Stock Number	Dim. "A" Bore	Dim. "B"
101-0610	.98" x 10 Spl.	3 1/8"
101-0615	1" x 15 Spl.	3 1/8"

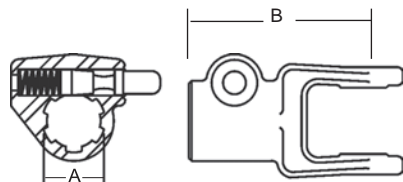
Male Spline Lawn & Garden



Stock Number	Dim. "A"	Dim. "B"
106-0615	1" x 15 Spl.	5 3/8"

Quick Disconnect

Repair Kit —
*13002006
**13002021

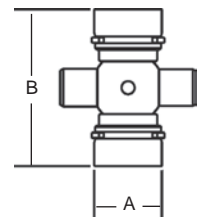


Stock Number	Dim. "A" Bore	Dim. "B"
102-0606*	1 3/8" x 6 Spl.	3 7/8"
102-0621**	1 3/8" x 21 Spl.	3 7/8"

Cross & Bearing Kit (R Kit)

(Recommended 8 hour grease interval)

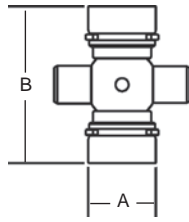
Snap Ring Located in Bushing



Stock Number	Dim. "A"	Dim. "B"
200-0600	31/32"	2 9/32"

Extended Lubrication Cross & Bearing Kit (E-Kit)

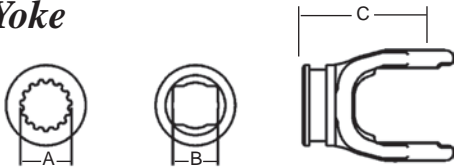
(Recommended 50 hour grease interval)
Snap Ring Located in Bushing



Stock Number	Dim. "A" Bore	Dim. "B"
201-0600	31/32"	2 9/32"

Shaft Weld Yoke

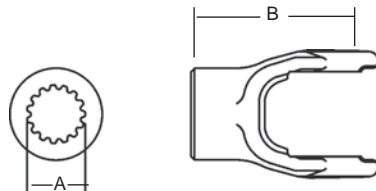
With Bearing Groove
(Guard must rotate freely on yoke)



Stock Number	Dim. "A" Bore	Dim. "B" Bore	Dim. "C"
300-0600		3/4" x 7/8"	2 1/2"
302-0600*	1" x 15 Spl.		2 1/4"
303-0600*		3/4" x 7/8"	2 1/4"

*Requires nylon bearing part 04-15169

Without Bearing Groove



Stock Number	Dim. "A" Bore	Dim. "B"
301-0600	1" x 15 Spl.	2 1/2"

Shaft

3/4" x 7/8" Rectangular



Stock Number	Length
400-1214	6'
404-1214	3'

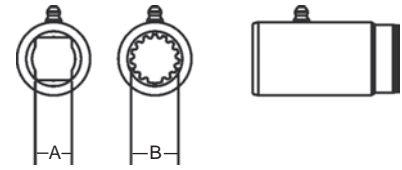
1" x 15 Spline
(Induction Hardened)



Stock Number	Major Diameter	Length
404-1615H	1.00" / .995"	3'

Slip Sleeve

With Grease Groove



Stock Number	Length	Dim. "A" Bore	Dim. "B" Bore	Fits Tube Size
510-0600	4"	3/4" x 7/8" Rect.		1 1/2" (.065 Wall)
510-0615	3"		1" x 15 Spl.	1 1/2" (.065 Wall)

Tube

1" x 1 1/8" Rectangular O.D.



Stock Number	Length	Fits Shaft
600-1618	6'	3/4" x 7/8"
604-1618	3'	3/4" x 7/8"

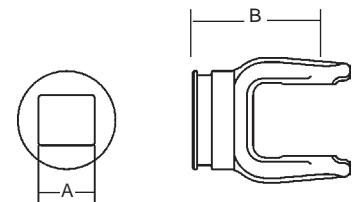
1 1/2" Round (.065 Wall) O.D.



Stock Number	Length
602-0600	6'
604-0600	3'

Tube Weld Yoke

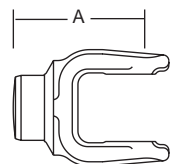
With Bearing Groove
(Guard must rotate freely on yoke)



Stock Number	Dim. "A" Bore	Dim. "B"
700-0600	1" x 1 1/8"	2 1/2"

(Guard must rotate freely on yoke)

Stock Number	Dim. "A"	Fits Tube Size
701-0600	3 5/8"	1 1/2" (.065 Wall)
702-0600 (without Bearing Groove)	2 1/2"	1 1/2" (.065 Wall)
703-0600 (with Groove)	2 1/2"	1 1/2" (.065 Wall)

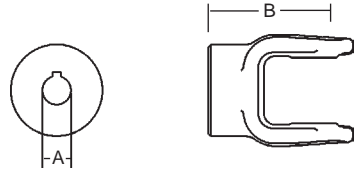


6 Series (cont'd.)

Implement Yoke

Round Bore

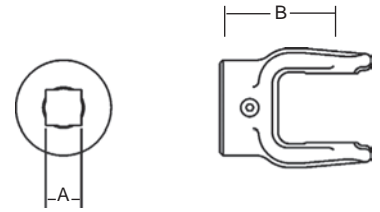
With Keyway & Set Screw



Stock Number	Dim. "A" Bore	Dim. "B"	Standard Keyway
800-0610	5/8"	2 1/2"	3/16"
800-0612	3/4"	2 1/2"	3/16"
800-0613	13/16"	2 1/2"	3/16"
800-0614	7/8"	2 1/2"	3/16"
800-0615	15/16"	2 1/2"	1/4"
800-0616	1"	2 1/2"	1/4"
800-0618	1 1/8"	2 1/2"	1/4"
800-0619	1 3/16"	2 1/2"	1/4"
800-0620	1 1/4"	2 1/2"	1/4"

Square Bore

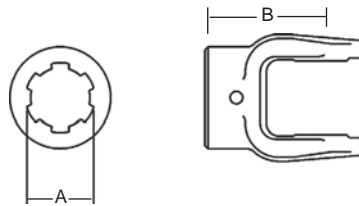
With Set Screw



Stock Number	Dim. "A" Bore	Dim. "B"
804-0612	3/4"	2 1/2"
804-0614	7/8"	2 1/2"
804-0616	1"	2 1/2"
804-0618	1 1/8"	2 1/2"
804-0620	1 1/4"	2 1/2"

Spline Bore

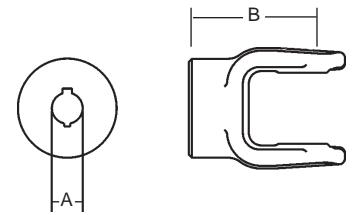
With 1/4" Pin Hole



Stock Number	Dim. "A" Bore	Dim. "B"
801-0606	1 3/8" x 6 Spl.	2 1/2"
801-0618	1 1/8" x 6 Spl.	2 1/2"

Round Bore

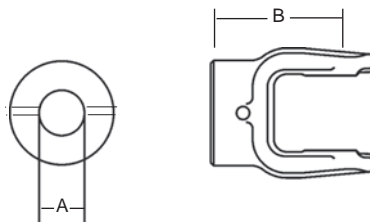
Double Keyway & Set Screw



Stock Number	Dim. "A" Bore	Double Keyway	Dim. "B"
806-0612	3/4"	3/16" & 1/4"	2 1/2"
806-0613	13/16"	3/16" & 1/4"	2 1/2"
806-0614	7/8"	3/16" & 1/4"	2 1/2"
806-0616	1"	3/16" & 1/4"	2 1/2"
806-0618	1 1/8"	1/4" & 5/16"	2 1/2"
806-0619	1 3/16"	1/4" & 5/16"	2 1/2"
806-0620	1 1/4"	1/4" & 5/16"	2 1/2"

Shear Pin

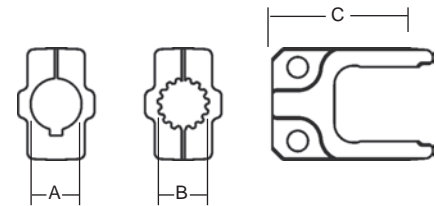
With 1/4" Pin Hole



Stock Number	Dim. "A" Bore	Dim. "B"
802-0616	1"	2 1/2"
802-0618	1 1/8"	2 1/2"
802-0620	1 1/4"	2 1/2"

Clamp Yoke

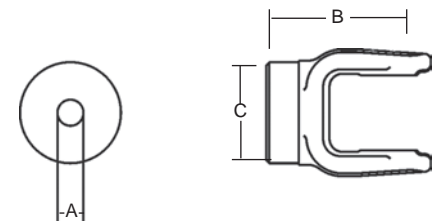
With Bolt Hole & Set Screw



Stock Number	Dim. "A" Bore	Dim. "B" Bore	Keyway	Dim. "C"
807-0614	7/8"		3/16"	2 1/2"
807-0615		1" x 15 Spl.		2 1/2"
807-0616	1"		1/4"	2 1/2"

Stock Bore

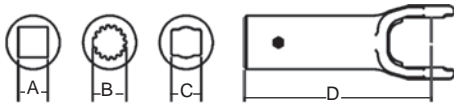
With Hub O. D. Turned



Stock Number	Dim. "A" Bore	Dim. "B"	Dim. "C"
809-0608	1/2"	2 1/2"	2"

6 Series (cont'd.)

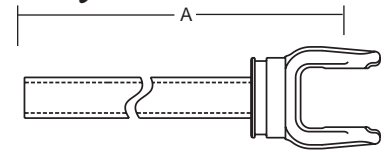
Slip Sleeve Yoke



Stock Number	Dim. "A" Bore	Dim. "B" Bore	Dim. "C" Bore	Dim. "D" Length
808-0612	3/4" Sq.			5 1/2"
808-0614	7/8" Sq.			5 1/2"
812-0615		1" x 15 Spl.		5 1/2"
813-0600			3/4" x 7/8" Rect.	5 1/2"

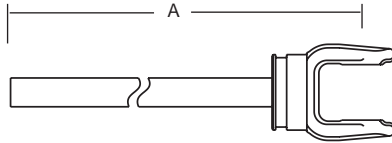
Yoke & Tube Assembly

1" x 1 1/8" Tube



Stock Number	Fits Shaft	Dim. "A"
11000648	3/4" x 7/8"	38.75"

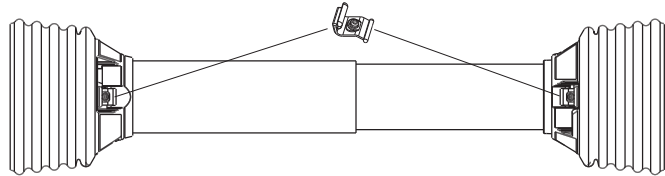
Yoke & Shaft Assembly



Stock Number	Shaft Size	Dim. "A"
10000610	1" x 15 Spl.	12.50"
10000648	3/4" x 7/8"	38.75"

Guard

Order Bushings As Required



Stock Number	Overall Driveline Length	Bearing Kit (4-per kit)
900-2548	48"	921-0600
900-2560	60"	921-0600

Assembly instructions included with guard bearing kit

NOTE: Guards must rotate freely on yokes

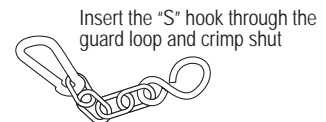
Easy Lock™ Replacement Kit

Part Number: 13005000 (4-per Kit)



Guard Chain Kit

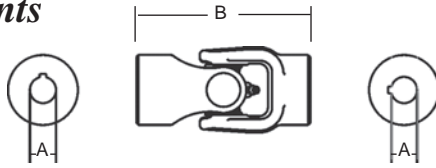
Part Number: 13006500 (2-per Kit)



Insert the "S" hook through the guard loop and crimp shut

6 Series (cont'd.)

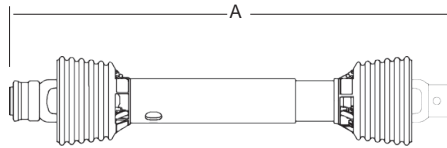
Universal Joints



Round To Round
Furnished with Keyway & Set Screw

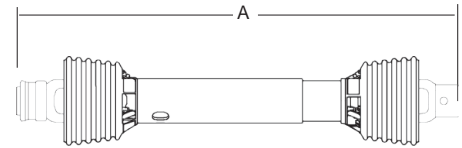
Stock Number	Dim. "A" Bore	Dim. "B"
15120612	3/4"	5"
15160616	1"	5"

Drivelines



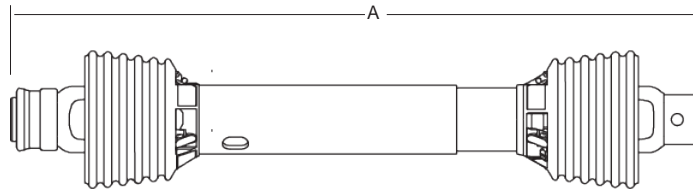
Drivelines are furnished without Cross & Bearing Kit and Implement Yoke. Select kit and Implement Yoke as required. When cross & bearing kit and implement yoke are assembled, the overall compressed length of the driveline will be 48".

Stock Number	Tractor Yoke	Overall Compressed Length Dim. "A"	Max Running Length
14000648	1 3/8" x 6 Spl. Spring Lok	48"	70"

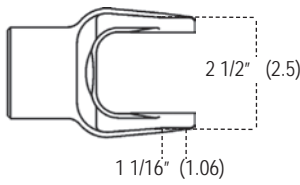


Drivelines are furnished without Cross & Bearing Kit and Outboard Yokes. Select kit and outboard yokes as required. When cross & bearing kit and outboard yokes are assembled, the overall compressed length of the driveline will be 48".

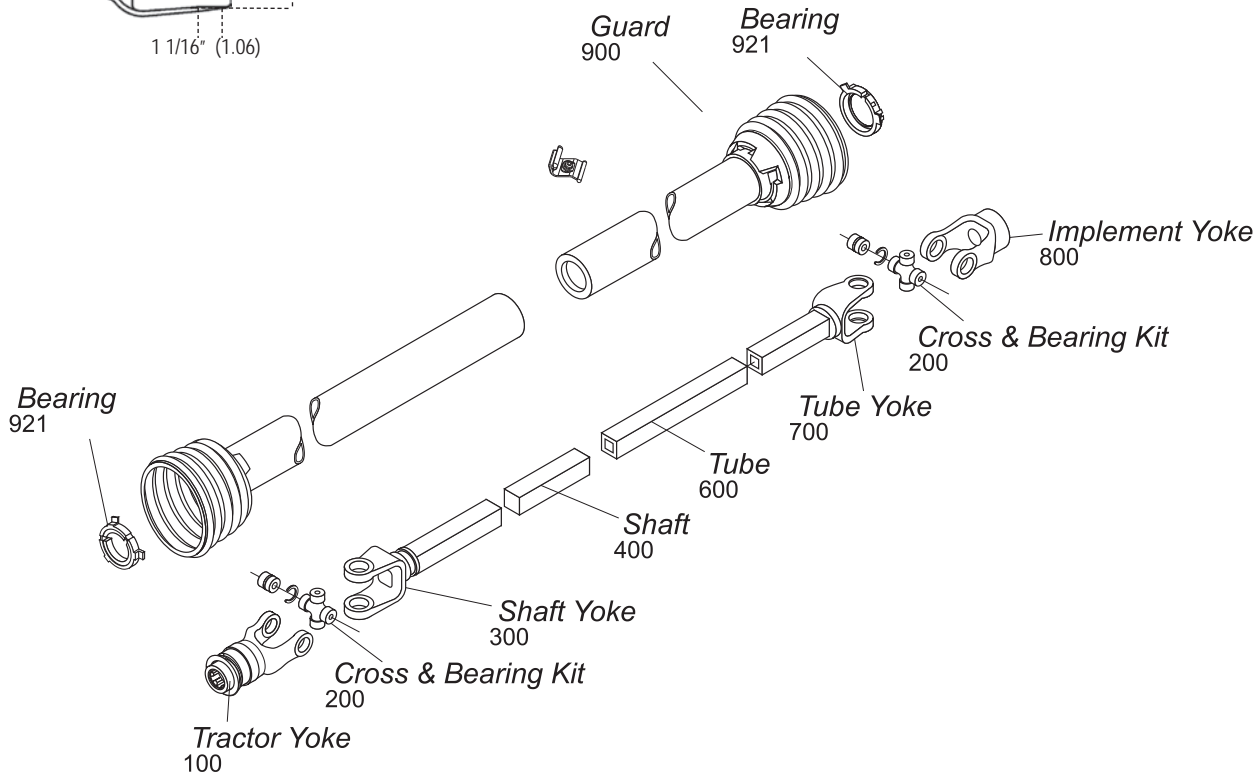
Stock Number	Overall Compressed Length Dim. "A"	Max Running Length
14010648	48"	70"



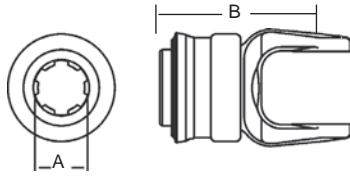
Stock Number	Tractor Yoke	Implement Yoke	Overall Compressed Length Dim. "A"	Max Running Length	Application
14000600	1 3/8" x 6 Spl. Spring Lok	1" Round with 1/2" Pin Hole	39"	60"	Finishing Mower
14000605	1 3/8" x 6 Spl. Spring Lok	1" Round with 5/16" Pin Hole	39"	60"	Finishing Mower
14000616	1 3/8" x 6 Spl. Spring Lok	1" Round 1/4" Keyway	48"	70"	Auger
14000620	1 3/8" x 6 Spl. Spring Lok	1 3/8" x 6 Spl. Spring Lok	27 1/4"	36"	Fertilizer Spreader
14000638	1 3/8" x 6 Spl. Q.D.	1" Round with 3/8" Pinhole	38"	55"	Finishing Mower



12 Series



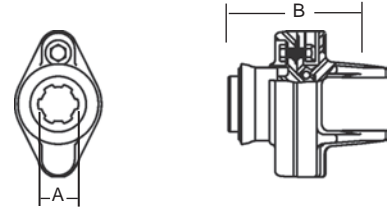
Tractor Yoke



Spring-Lok
Repair Kit — 13003100

Stock Number	Dim. "A" Bore	Dim. "B"
100-1206	1 3/8" x 6 Spl.	4"
100-1221	1 3/8" x 21 Spl.	4"

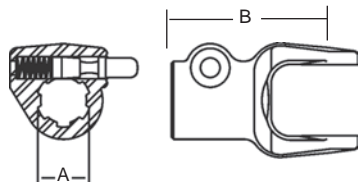
Ball Shear Device
With Spring-Lok
Repair Kit — 13003100



Stock Number	Dim. "A" Bore	Dim. "B"	Shear Bolt
104-1206	1 3/8" x 6 Spl.	4 5/8"	5/16" - 18 Gr. 5
104-1221	1 3/8" x 21 Spl.	4 5/8"	5/16" - 18 Gr. 5

Replacement Shear Bolt Part # 11-10128

Quick Disconnect
Repair Kit —
*13002006
**13002021

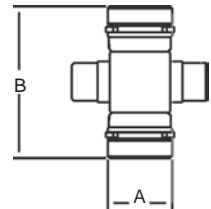


Stock Number	Dim. "A"	Dim. "B"
102-1206*	1 3/8" x 6 Spl.	4"
102-1221**	1 3/8" x 21 Spl.	4"

Cross & Bearing Kit

(R Kit)
(Recommended 8 hour grease interval)

Snap Ring Located in Bushing

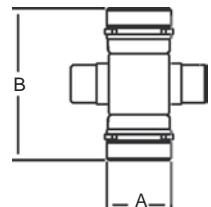


Stock Number	Dim. "A"	Dim. "B"
200-1200	1 1/16"	2 1/2"

Extended Lubrication Cross & Bearing Kit

(E Kit)
(Recommended 50 hour grease interval)

Snap Ring Located in Bushing

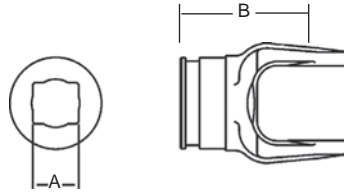


Stock Number	Dim. "A"	Dim. "B"
201-1200	1 1/16"	2 1/2"

12 Series (cont'd.)

Shaft Weld Yoke

With bearing groove
(Guard must rotate freely on yoke)



Stock Number	Dim. "A" Bore	Dim. "B"
300-1200	1" x 1 1/8"	3 3/8"
301-1200*	15/16" Sq.	2 3/4"

*Requires nylon bearing 04-15170

Shaft

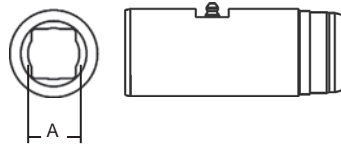


1" x 1 1/8" Rectangular

Stock Number	Length
400-1618	6'
404-1618	3'

Slip Sleeve

With Grease Groove



Stock Number	Dim. "A" Bore	Length	Fits Tube Size
500-1400	1" x 1 1/8" Rect.	5"	2" (.083 Wall)

Tube

1 1/4" x 1 3/8"
Rectangular O.D.



Stock Number	Length	Fits Shaft
600-2022	6'	1" x 1 1/8"
604-2022	3'	1" x 1 1/8"

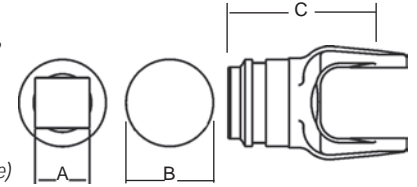
2" (.083 Wall)



Stock Number	Length
602-1400	6'
604-1400	3'

Tube Weld Yoke

With bearing groove
(Guard must rotate freely on yoke)



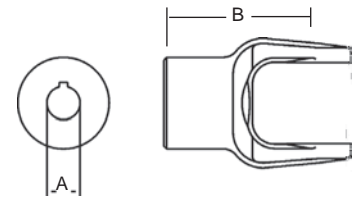
Stock Number	Dim. "A" Bore	Dim. "B" Fits Tube Size	Dim. "C"
700-1200	1 1/4" x 1 3/8"		3 3/8"
701-1200		2" (.083 Wall)	3 7/8"
702-1200*	15/16" Sq.		2 3/4"

*Requires nylon bearing 04-15170

Implement Yoke

Round Bore

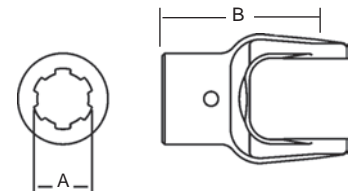
With Keyway & Set Screw



Stock Number	Dim. "A" Bore	Dim. "B"	Standard Keyway
800-1212	3/4"	3 1/2"	3/16"
800-1214	7/8"	3 1/2"	3/16"
800-1215	15/16"	3 1/2"	1/4"
800-1216	1"	3 1/2"	1/4"
800-1218	1 1/8"	3 1/2"	1/4"
800-1219	1 3/16"	3 1/2"	1/4"
800-1220	1 1/4"	3 1/2"	1/4"
800-1222	1 3/8"	3 1/2"	5/16"
800-1224	1 1/2"	3 7/8"	3/8"

Spline Bore

With 21/64" Pin Hole

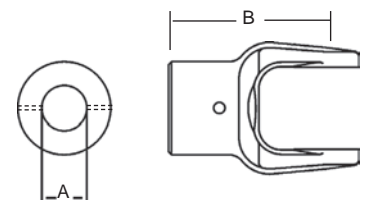


Stock Number	Dim. "A" Bore	Dim. "B"
801-1206	1 3/8" x 6 Spl.	3 1/2"
801-1210*	1 3/16" x 10 Spl.	3 1/2"
801-1213	.90" x 13 Spl. w/Set Screw	3 1/2"
801-1218	1 1/8" x 6 Spl.	3 1/2"
801-1221	1 3/8" x 21 Spl.	3 1/2"

*No Pin Hole with machined seal surface

Shear Pin

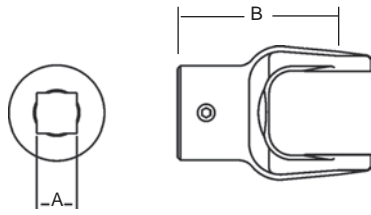
With 1/4" Pin Hole



Stock Number	Dim. "A" Bore	Dim. "B"
802-1216	1"	3 1/2"
802-1218	1 1/8"	3 1/2"
802-1220	1 1/4"	3 1/2"
802-1222	1 3/8"	3 1/2"

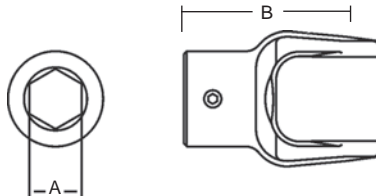
12 Series (cont'd.)

Square Bore With Set Screw



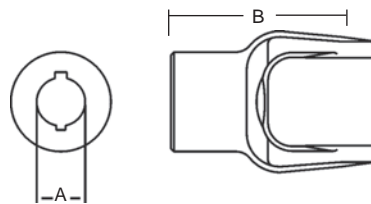
Stock Number	Dim. "A" Bore	Dim. "B"
804-1214	7/8"	3 1/2"
804-1216	1"	3 1/2"
804-1218	1 1/8"	3 1/2"
804-1220	1 1/4"	3 7/8"

Hexagon Bore With Set Screw



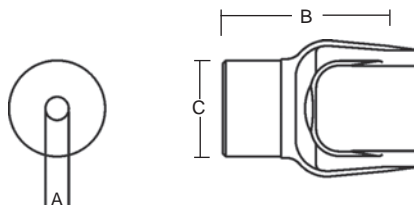
Stock Number	Dim. "A" Bore	Dim. "B"
805-1218	1 1/8"	3 1/2"
805-1220	1 1/4"	3 1/2"

Round Bore Double Keyway & Set Screw



Stock Number	Dim. "A" Bore	Dim. "B"	Double Keyway
806-1216	1"	3 1/2"	1/4" & 3/16"
806-1218	1 1/8"	3 1/2"	1/4" & 5/16"
806-1220	1 1/4"	3 1/2"	1/4" & 5/16"

Stock Bore With Hub O.D. Turned



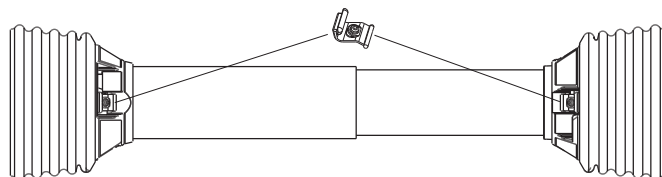
Stock Number	Dim. "A" Bore	Dim. "B"	Dim. "C"
809-1208	1/2"	3 1/2"	2"

Guard

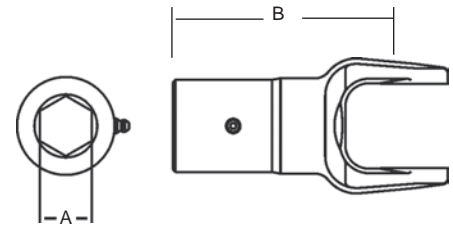
Order Bearings as Required

Stock Number	Overall Driveline Length	Bearing Kit (4-per kit)
900-2548	48"	921-1200
900-2560	60"	921-1200

Assembly instructions included with guard bearing kit
NOTE: Guards must rotate freely on yokes

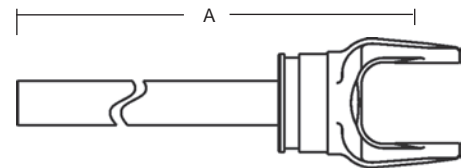


Slip Yoke



Stock Number	Dim. "A" Bore	Dim. "B"
808-1216	1" Sq.	5 1/4"
810-1216	1" Rd. w/1/4" Keyway	5 1/4"
811-1218	1 1/8" Hex	5 1/4"

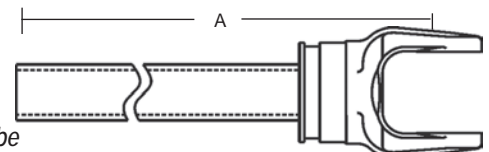
Yoke & Shaft Assembly



1" x 1 1/8"
Rectangular Shaft

Stock Number	Dim. "A"
10001248	37.38"
10001260	49.38"

Yoke & Tube Assembly



1 1/4" x 1 3/8" Tube

Stock Number	Fits Shaft	Dim. "A"
11001248	1" x 1 1/8"	37.38"
11001260	1" x 1 1/8"	49.38"

Guard Chain Kit

Insert the "S" hook through the guard loop and crimp shut



Part Number: 13006500 (2-per Kit)

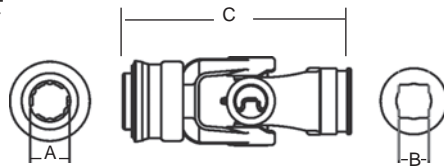
Easy Lock™ Replacement Kit

Part Number: 13005000 (4-per Kit)



12 Series (cont'd.)

Universal Joint

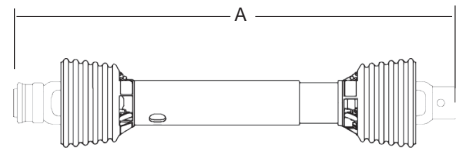
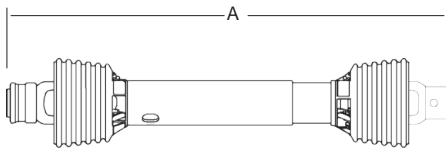


Spring Lok to Shaft Weld Yoke

Repair Kit — 13003100

Stock Number	Dim. "A" Bore	Dim. "B" Bore	Dim. "C"
15061200	1 3/8" x 6 Spl.	1" x 1 1/8" Rect.	7 1/2"

Drivelines

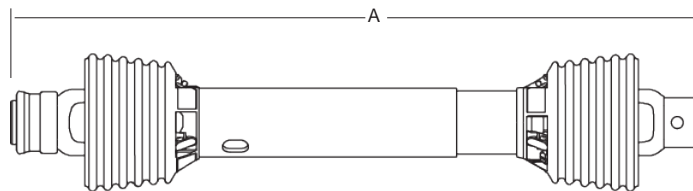


Drivelines are furnished without Cross & Bearing Kit and Implement Yoke. Select kit and implement yoke as required. When cross & bearing kit and implement yoke are assembled, the overall compressed length of the driveline will be 48" or 60".

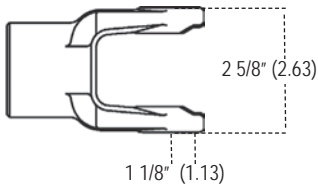
Drivelines are furnished without Cross & Bearing Kit and Outboard Yokes. Select kit and outboard yokes as required. When cross & bearing kit and outboard yokes are assembled, the overall compressed length of the driveline will be 48" or 60".

Stock Number	Tractor Yoke	Overall Compressed Length Dim. "A"	Max Running Length
14001248	1 3/8" x 6 Spl. Spring Lok	48"	78"
14001260	1 3/8" x 6 Spl. Spring Lok	60"	89"

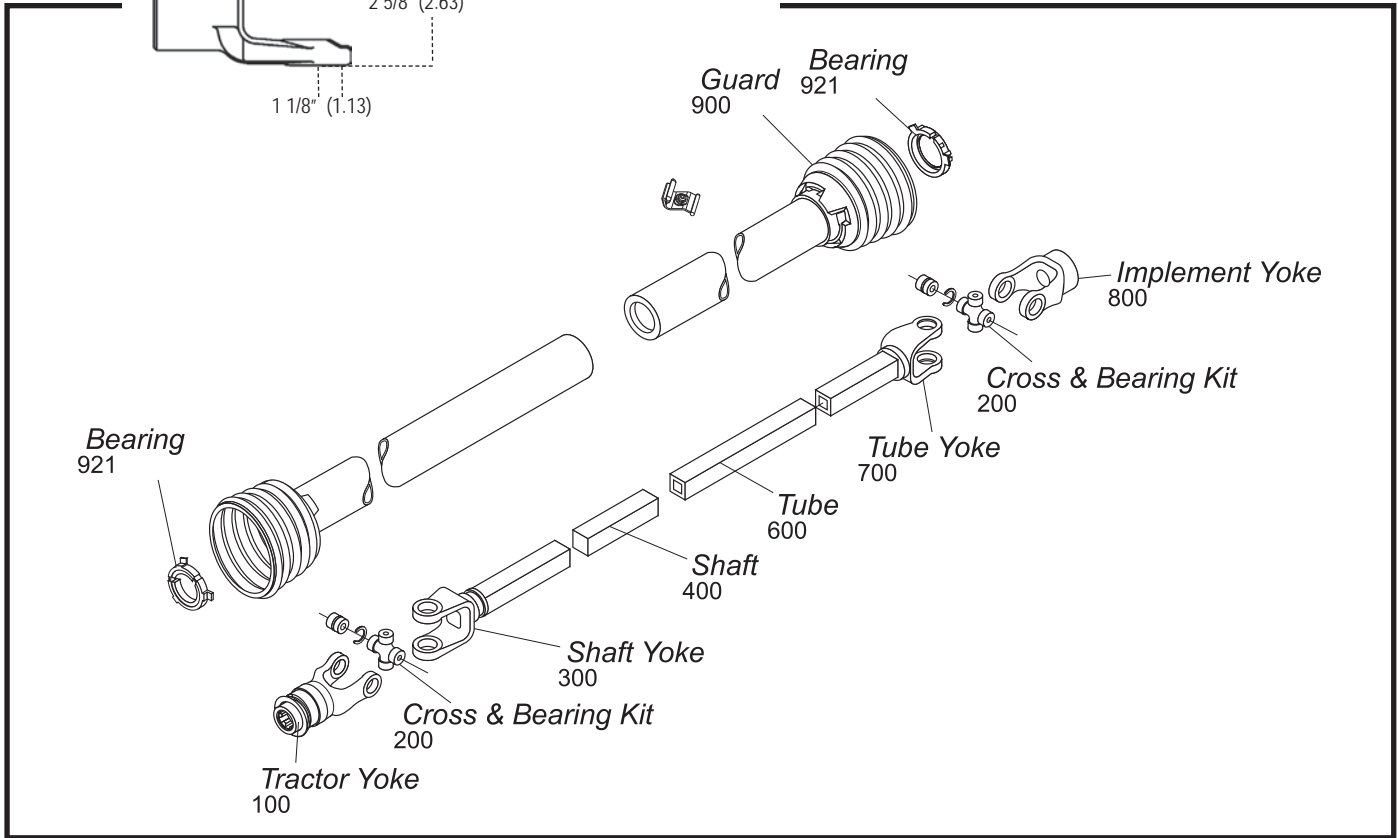
Stock Number	Overall Compressed Length Dim. "A"	Max Running Length
14011248	48"	78"
14011260	60"	89"
14021248 (with crosses installed)	48"	78"
14031248 (with 15/16" Sq. Shaft)	48"	78"



Stock Number	Tractor Yoke	Implement Yoke	Overall Compressed Length Dim. "A"	Max. Running Length	Application
14001200	1 3/8" x 6 Spl Q.D.	1 1/4" Rd 1/4" Keyway	48"	78"	Post Hole Digger
14001220	1 3/8" x 6 Spl. Spring Lok	1 1/4" Rd 1/4" Keyway	48"	77"	Augers

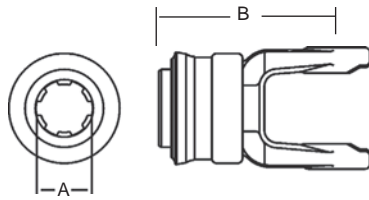


14 Series



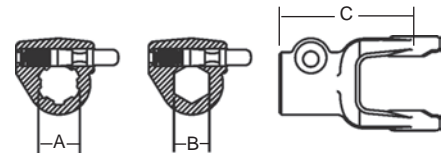
Tractor Yoke

Spring-Lok
Repair Kit — 13003100



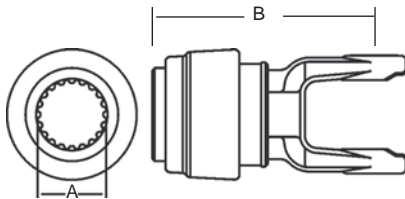
Stock Number	Dim. "A" Bore	Dim. "B"
100-1406	1 3/8" x 6 Spl.	4 5/16"
100-1421	1 3/8" x 21 Spl.	4 5/16"

Quick Disconnect
Repair Kit —
*13002006
**13002021



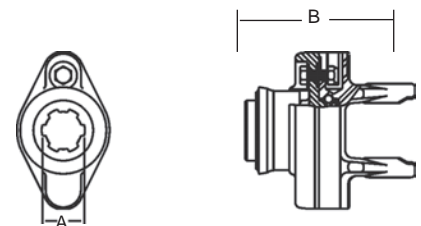
Stock Number	Dim. "A" Bore	Dim. "B" Bore	Dim. "C"
102-1406*	1 3/8" x 6 Spl.		4 5/16"
102-1418**		1 1/8" Hex	4 5/16"
102-1421**	1 3/8" x 21 Spl.		4 5/16"

Safety Slide Lock
Repair Kit — 13004020



Stock Number	Dim. "A" Bore	Dim. "B"
101-1420	1 3/4" x 20 Spl.	5 5/8"

Ball Shear Device
With Spring-Lok
Repair Kit — 13003100



Stock Number	Dim. "A" Bore	Dim. "B"	Shear Bolt
104-1406	1 3/8" x 6 Spl.	4 5/8"	5/16" - 18 Gr. 5
104-1421	1 3/8" x 21 Spl.	4 5/8"	5/16" - 18 Gr. 5

Replacement Shear Bolt Part # 11-10128

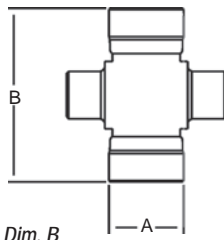
14 Series (cont'd.)

Cross & Bearing Kit

(R Kit)

(Recommended 8 hour grease interval)

Snap Ring Located in Yoke



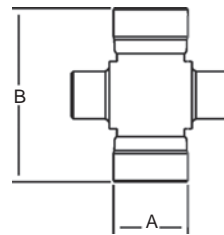
Stock Number	Dim. A	Dim. B
200-1400	1 1/8"	2 5/8"

Extended Lubrication Cross & Bearing Kit

(E Kit)

(Recommended 50 hour grease interval)

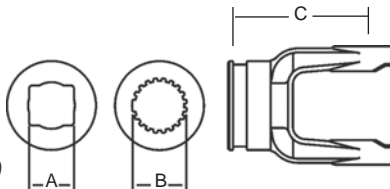
Snap Ring Located in Yoke



Stock Number	Dim. "A"	Dim. "B"
201-1400	1 1/8"	2 5/8"

Shaft Weld Yoke

With Bearing Groove
(Guard must rotate freely on yoke)



Stock Number	Dim. "A" Bore	Dim. "B" Bore	Dim. "C"
300-1400	1" x 1 1/8"		3 3/8"
301-1400		1 5/16" x 20 Spl.	3 3/8"

Shaft



1" x 1 1/8" Rectangular

Stock Number	Length
400-1618	6'
404-1618	3'

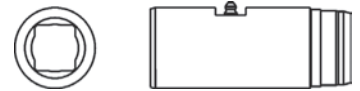
1 5/16" x 20 Spline
Induction Hardened



Stock Number	Length	Major Dim.
404-2120	3'	1.380/1.375

Slip Sleeve

1" x 1 1/8" Rectangular
With Grease Groove



Stock Number	Length	Fits Tube Size
500-1400	5"	2" (.083 Wall)

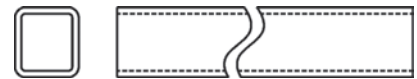
1 5/16" x 20 Spline
With Grease Reservoir



Stock Number	Length	Fits Tube Size
501-1400	8"	2" (.083 Wall)

Tube

1 1/4" x 1 3/8"
Rectangular O.D.



Stock Number	Length	Fits Shaft
600-2022	6'	1" x 1 1/8"
604-2022	3'	1" x 1 1/8"

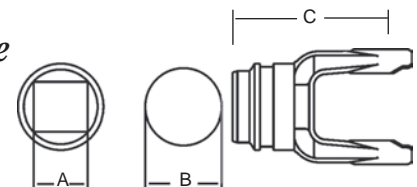
2" Round (.083 Wall)



Stock Number	Length
602-1400	6'
604-1400	3'

Tube Weld Yoke

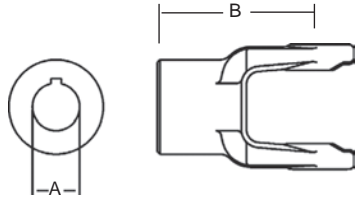
With Bearing Groove
(Guard must rotate freely on yoke)



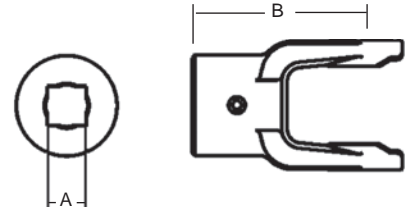
Stock Number	Dim. "A" Bore	Dim. "B" Fits Tube Size	Dim. "C"
700-1400	1 1/4" x 1 3/8"		3 3/8"
701-1400		2" (.083 Wall)	3 7/8"

Implement Yoke

Round Bore
With Keyway & Set Screw



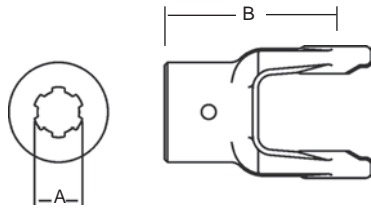
Square Bore
With Set Screw



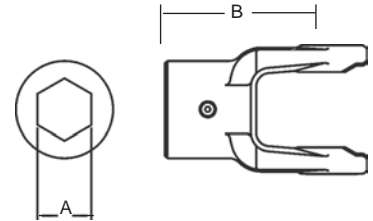
Stock Number	Dim. "A" Bore	Dim. "B"	Standard Keyway
800-1416	1"	3 7/8"	1/4"
800-1418	1 1/8"	3 7/8"	1/4"
800-1419	1 3/16"	3 7/8"	1/4"
800-1420	1 1/4"	3 7/8"	1/4"
800-1422	1 3/8"	3 7/8"	5/16"
800-1423	1 7/16"	3 7/8"	3/8"
800-1424	1 1/2"	3 7/8"	3/8"

Stock Number	Dim. "A" Bore	Dim. "B"
804-1414	7/8"	3 7/8"
804-1416	1"	3 7/8"
804-1418	1 1/8"	3 7/8"
804-1419	1 3/16"	3 7/8"
804-1420	1 1/4"	3 7/8"

Spline Bore
With 21/64" Pin Hole



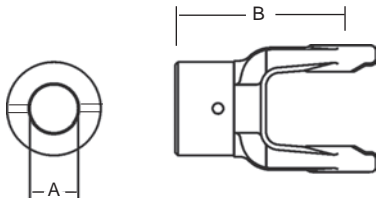
Hexagon Bore
With Set Screw



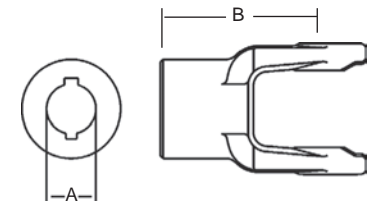
Stock Number	Dim. "A" Bore	Dim. "B"
801-1406	1 3/8" x 6 Spl.	3 7/8"
801-1418	1 1/8" x 6 Spl.	3 7/8"
801-1420	1 1/4" x 6 Spl.	3 7/8"
801-1421	1 3/8" x 21 Spl.	3 7/8"

Stock Number	Dim. "A" Bore	Dim. "B"
805-1418	1 1/8"	3 7/8"
805-1420	1 1/4"	3 7/8"

Shear Pin
With 1/4" Pin Hole



Round Bore
Double Keyway & Set Screw



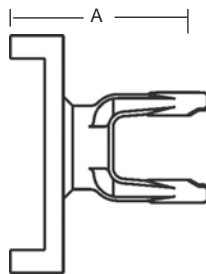
Stock Number	Dim. "A" Bore	Dim. "B"
802-1418	1 1/8"	3 7/8"
802-1420	1 1/4"	3 7/8"
802-1422*	1 3/8"	3 7/8"
802-1424	1 1/2"	3 7/8"

Stock Number	Dim. "A" Bore	Double Keyway	Dim. "B"
806-1418	1 1/8"	1/4" & 5/16"	3 7/8"
806-1419	1 3/16"	1/4" & 5/16"	3 7/8"
806-1420	1 1/4"	1/4" & 5/16"	3 7/8"

* with 1/4" and 1/2" Pin Hole

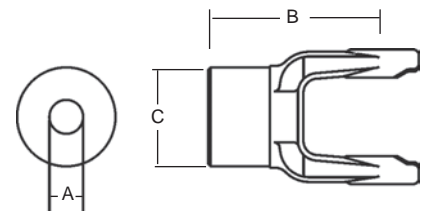
Torque Limiter Flange
(Interchanges with Great Lakes Clutch)

Stock Number	Dim. "A"
803-1400	4 1/2"



Stock Bore
With Hub O. D. Turned

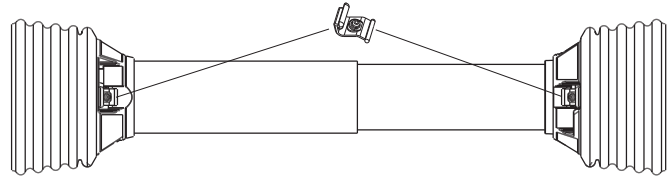
Stock Number	Dim. "A" Bore	Dim. "B"	Dim. "C"
809-1412	3/4"	3 7/8"	2 1/8"



14 Series (cont'd.)

Guard

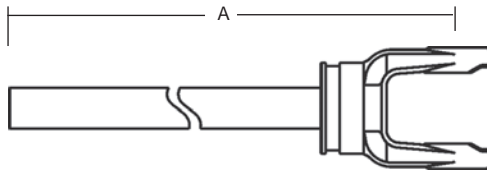
Order Bearings As Required



Stock Number	Overall Driveline Length	Bearing Kit (4-per kit)
900-2548	48"	921-1200
900-2560	60"	921-1200

Assembly instructions included with guard bearing kit
NOTE: Guards must rotate freely on yokes

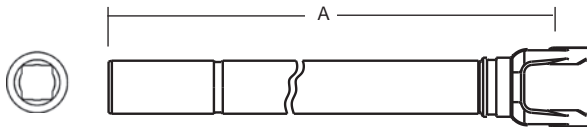
Yoke & Shaft Assembly



1" x 1 1/8" Shaft

Stock Number	Dim. "A"
10001438	26.12"
10001448	35.62"
10001460	47.62"

Yoke, Tube & Sleeve Assembly



1" x 1 1/8" Rectangular

Stock Number	Dim. "A"
11001438	26.12"
11001448	36.12"
11001460	48.12"

Easy Lock™ Replacement Kit

Part Number: 13005000 (4-per Kit)



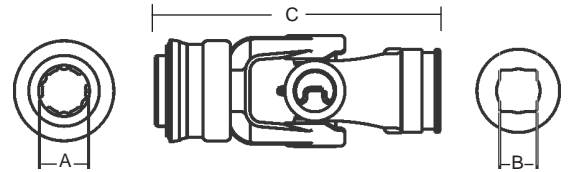
Guard Chain Kit

Insert the "S" hook through the guard loop and crimp shut



Part Number: 13006500 (2-per Kit)

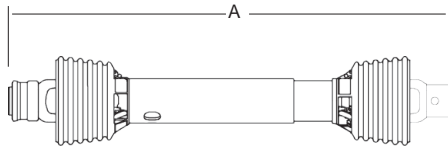
Universal Joint



Spring-Lok to Shaft Weld Yoke
Repair Kit — 13003100

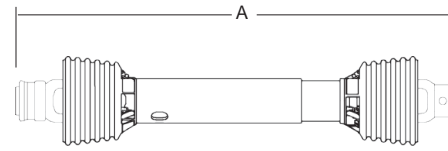
Stock Number	Dim. "A" Bore	Dim. "B" Bore	Dim. "C"
15061400	1 3/8" x 6 Spl.	1" x 1 1/8" Rect.	7 3/4"

Drivelines



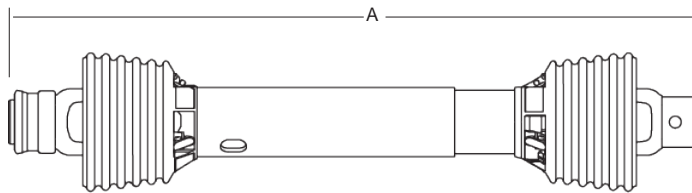
Drivelines are furnished without Cross & Bearing Kit and Implement Yoke. Select kit and implement yoke as required. When cross & bearing kit and implement yoke are assembled, the overall compressed length of the driveline will be 48" or 60".

Stock Number	Tractor Yoke	Overall Compressed Length Dim. "A"	Max. Running Length
14001448	1 3/8" x 6 Spl. Spring Lok	48"	75"
14001460	1 3/8" x 6 Spl. Spring Lok	60"	99"

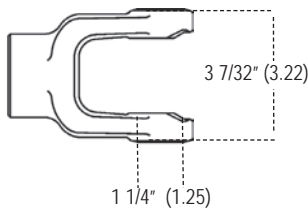


Drivelines are furnished without Cross & Bearing Kit and Outboard Yoke. Select kit and outboard yokes as required. When cross & bearing kit and outboard yokes are assembled, the overall compressed length of the driveline will be 48" or 60".

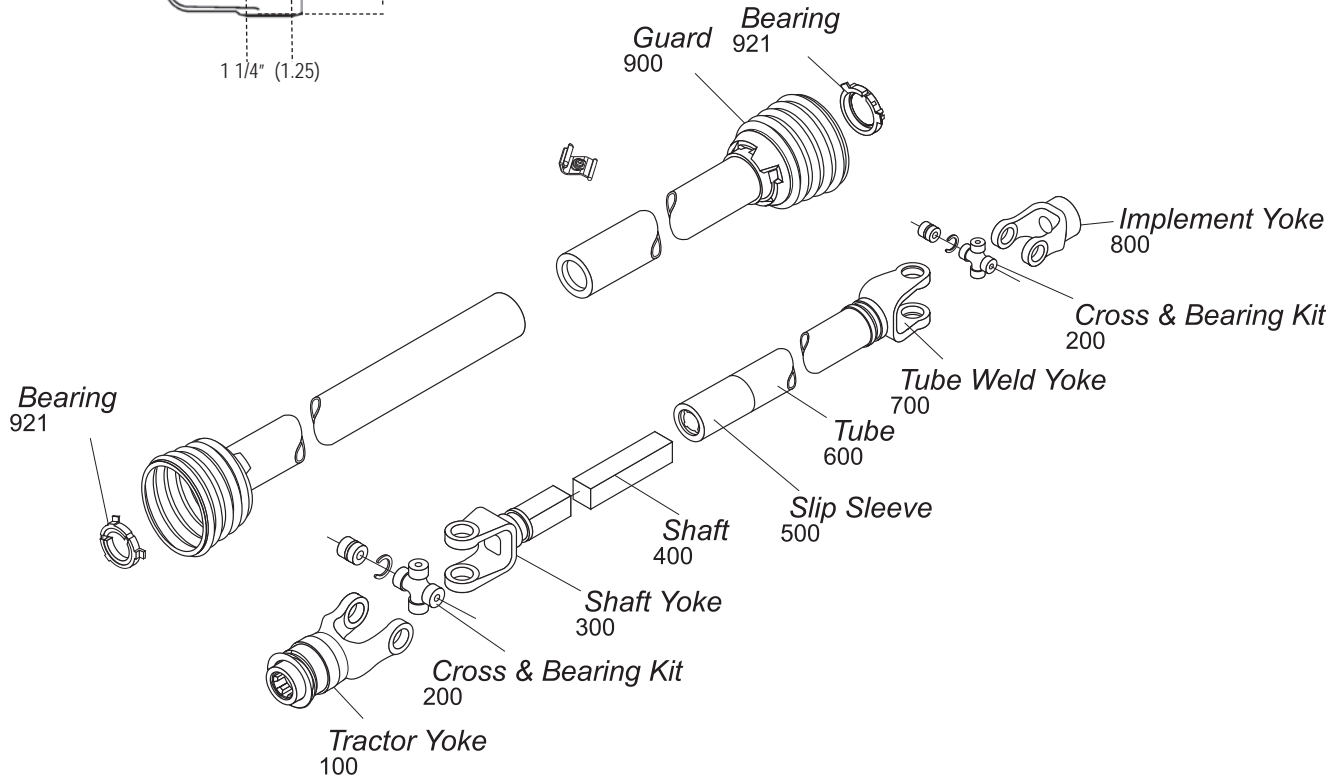
Stock Number	Overall Compressed Length Dim. "A"	Max. Running Length
14011448	48"	75"
14011460	60"	99"
14021448 (With crosses installed)	48"	75"



Stock Number	Tractor Yoke	Implement Yoke	Overall Compressed Length Dim. "A"	Max. Running Length	Application
14001404	1 3/8" x 6 Spl. Spring-Lok	1 3/8" Round 1/2" Shear Pin Hole	30 3/16"	39.5"	4 ft. Lift Type Rotary Cutter
14001405	1 3/8" x 6 Spl. Spring-Lok	1 3/8" Round 1/2" Shear Pin Hole	37 3/16"	53.5"	5 ft. Lift Type Rotary Cutter
14001406	1 3/8" x 6 Spl. Spring-Lok	1 3/8" Round 1/2" Shear Pin Hole	56 3/16"	76.5"	5 & 6 ft. Pull Type Rotary Cutter
14001420	1 3/8" x 6 Spl. Spring-Lok	1 1/4" Round 1/4" Keyway	48"	75"	Auger



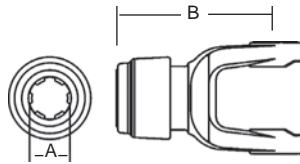
35 Series



Tractor Yoke

Safety Slide Lock

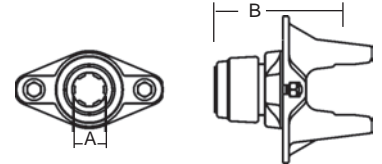
Repair Kit —
*13004000
**13004020



Stock Number	Dim. "A" Bore	Dim. "B"
101-3506*	1 3/8" x 6 Spl.	5 1/4"
101-3520**	1 3/4" x 20 Spl.	6 1/8"
101-3521*	1 3/8" x 21 Spl.	5 1/4"

Ball Shear Device

With Safety Slide Lock
Repair Kit —
*13004000
**13004020

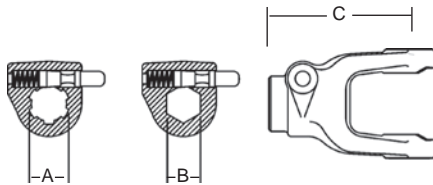


Stock Number	Dim. "A" Bore	Shear Bolt	Dim. "B"
104-3506*	1 3/8" x 6 Spl.	(2) 3/8" - 16 Gr. 5	5 1/2"
104-3520**	1 3/4" x 20 Spl.	(2) 3/8" - 16 Gr. 5	6"
104-3521*	1 3/8" x 21 Spl.	(2) 3/8" - 16 Gr. 5	5 1/2"
104-3524	1 1/2" Rd. 3/8" Kw.	(2) 3/8" - 16 Gr. 5	6"

Replacement Shear Bolt Part No. 11-10445

Quick Disconnect

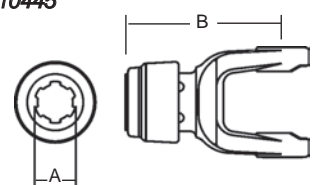
Repair Kit —
*13002021
**13002006
***13002020
****13002806



Stock Number	Dim. "A" Bore	Dim. "B" Bore	Dim. "C"
102-3505*		1 1/4" Hex	4 3/4"
102-3506**	1 3/8" x 6 Spl.		4 3/4"
102-3518*		1 1/8" Hex	4 3/4"
102-3520***	1 3/4" x 20 Spl.		5 3/8"
102-3521*	1 3/8" x 21 Spl.		4 3/4"
102-3528****	1 3/4" x 6 Spl.		5 5/16"

Auto-Lok

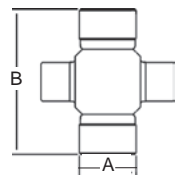
Repair Kit —
*13004000
**13004020



Stock Number	Dim. "A" Bore	Dim. "B"
110-3506*	1 3/8" x 6 Spl.	5 1/4"
110-3520**	1 3/4" x 20 Spl.	6 1/8"
110-3521*	1 3/8" x 21 Spl.	5 1/4"

Cross & Bearing Kit

(R Kit)
(Recommended 8 hour grease interval)



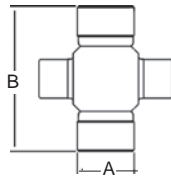
Snap Ring Located in Yoke

Stock Number	Dim. "A"	Dim. "B"
200-3500	1 1/4"	3 7/32"

Extended Lubrication Cross & Bearing Kit (E Kit)

(Recommended 50 hour grease interval)

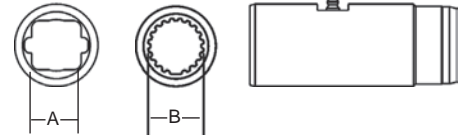
Snap Ring Located in Yoke



Stock Number	Dim. "A" Bore	Dim. "B"
201-3500	1 1/4"	3 7/32"

Slip Sleeve

With Grease Groove

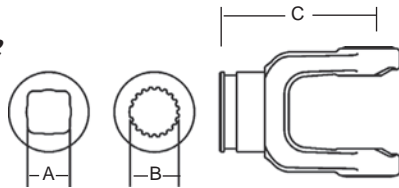


Stock Number	Length	Dim. "A" Bore	Dim. "B" Bore	Fits Tube Size
500-3500	5"	1 3/16" Sq.		2 1/8" (.120 Wall)
501-3500	5"	1 3/16" Sq.		2 1/8" (.083 Wall) & 2 1/4" (.120 Wall)
504-3500	8"	1 5/16" Sq.		2 1/2" (.120 Wall)
505-3500	5"		1 11/16" x 20 Spl.	2 1/2" (.120 Wall)

Shaft Weld Yoke

With Bearing Groove

(Guard must rotate freely on yoke)

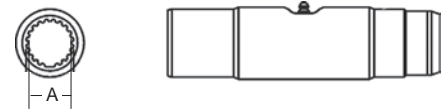


Stock Number	Dim. "A" Bore	Dim. "B" Bore	Dim. "C"
300-3500	1 3/16" Sq.		4 1/4"
301-3500		1 5/16" x 20 Spl.	4 1/4"
*302-3500		1 11/16" x 20 Spl.	3 3/4"

* For use with 921-3500 Nylon Bearing Kit and 902-3548 / 902-3560 Guard

Spline Sleeve

With Grease Reservoir



Stock Number	Length	Dim. "A" Bore	Fits Tube Size
502-3500	8"	1 5/16" x 20 Spl.	2 1/8" (.120 Wall)
503-3500	8"	1 11/16" x 20 Spl.	2 1/2" (.120 Wall)

Shaft

1 3/16" Square



Stock Number	Length
400-0019	6'
404-0019	3'

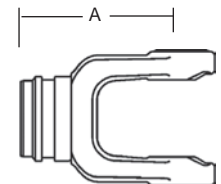
Tube



Stock Number	Dim. "A" Size	Length
602-3500	2 1/8" (.120 Wall)	6'
604-3500	2 1/8" (.120 Wall)	3'

Tube Weld Yoke

With Bearing Groove
(Guard must rotate freely on yoke)



Stock Number	Dim. "A"	Fits Tube Size
701-3500	4 1/4"	2 1/8" (.120 Wall)
702-3500	4 1/4"	2 1/8" (.083 Wall)
703-3500 with Bore**	4 1/4"	2 1/4" (.120 Wall)
*704-3500 with Bore**	4 1/4"	2 1/2" (.120 Wall)
705-3500 with Bore**	4 1/4"	2 1/8" (.120 Wall)

* For use with 921-3500 Nylon Bearing Kit and 902-3548 / 902-3560 Guard

** Bore through for telescoping shaft

Spline Shaft

Induction Hardened



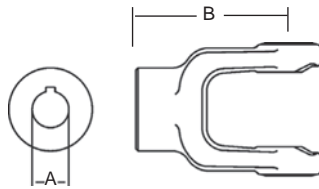
Stock Number	Dim. "A" Size	Length	Major Dim.
404-2120	1 5/16" x 20 Spl.	3'	1.380/1.375
404-2720	1 11/16" x 20 Spl.	3'	1.790/1.785

35 Series (cont'd.)

Implement Yoke

Round Bore

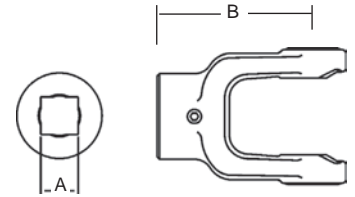
With Keyway & Set Screw



Stock Number	Dim. "A" Bore	Standard Keyway	Dim. "B"
800-3516	1"	1/4"	4 1/4"
800-3518	1 1/8"	1/4"	4 1/4"
800-3519	1 3/16"	1/4"	4 1/4"
800-3520	1 1/4"	1/4"	4 1/4"
800-3522	1 3/8"	5/16"	4 1/4"
800-3523	1 7/16"	3/8"	4 1/4"
800-3524	1 1/2"	3/8"	4 1/4"
8003524H	1 1/2"	3/8" with 5/16" Pinhole	4 1/4"
800-3528	1 3/4"	3/8"	4 1/4"
800-3526	1 5/8"	3/8"	4 1/4"

Square Bore

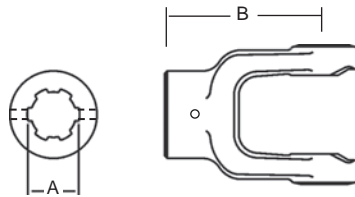
With Set Screw



Stock Number	Dim. "A" Bore	Dim. "B"
804-3516	1"	4 1/4"
804-3518	1 1/8"	4 1/4"
804-3519	1 3/16"	4 1/4"
804-3520	1 1/4"	4 1/4"
804-3524	1 1/2"	4 1/4"

Spline Bore

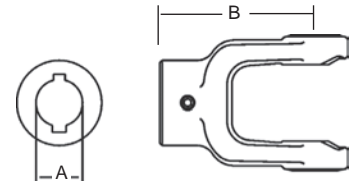
With 21/64" Pin Hole



Stock Number	Dim. "A" Bore	Dim. "B"
801-3506	1 3/8" x 6 Spl.	4 1/4"
801-3521	1 3/8" x 21 Spl.	4 1/4"

Round Bore

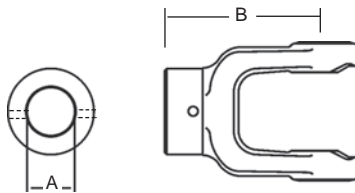
Double Keyway & Set Screw



Stock Number	Dim. "A" Bore	Dim. "B"	Double Keyway
806-3519	1 3/16"	4 1/4"	1/4" & 5/16"
806-3520	1 1/4"	4 1/4"	1/4" & 5/16"
806-3522	1 3/8"	4 1/4"	5/16" & 3/8"

Shear Pin

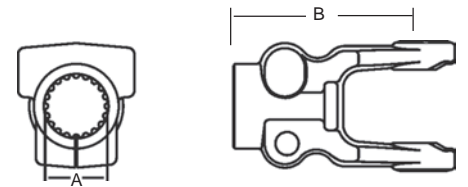
With 1/4" Pin Hole



Stock Number	Dim. "A" Bore	Dim. "B"
802-3520	1 1/4"	4 1/4"
802-3522*	1 3/8"	4 1/4"
802-3524	1 1/2"	4 1/4"

* With 1/2" Pin Hole.

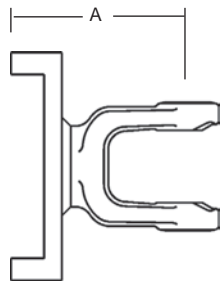
Clamp Yoke



Stock Number	Dim. "A" Bore	Dim. "B"
807-3506	1 3/8" x 6 Spl.	4 3/4"
807-3520	1 3/4" x 20 Spl.	5 3/8"
807-3521	1 3/8" x 21 Spl.	4 3/4"
807-3527	1 3/4" x 27 Spl.	5 1/4"

Torque Limiter Flange

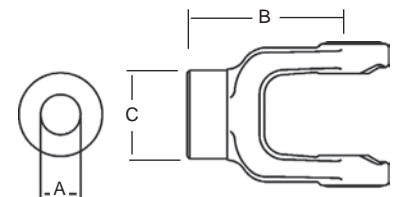
(Interchanges with Great Lakes Clutch)



Stock Number	Dim. "A"
803-3500	5"

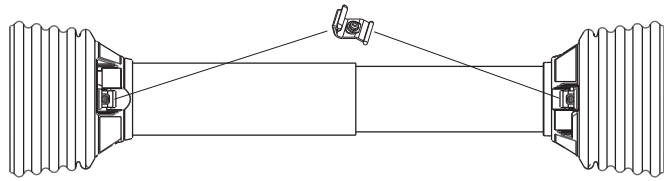
Stock Bore

With Hub O. D. Turned



Stock Number	Dim. "A" Bore	Dim. "B"	Dim. "C"
809-3516	1"	4 1/4"	2 1/4"

Guard



Order Bearings As Required

Stock Number	Overall Driveline Length	Bearing Kit (4-per kit)
900-2548	48"	921-1200
900-2560	60"	921-1200

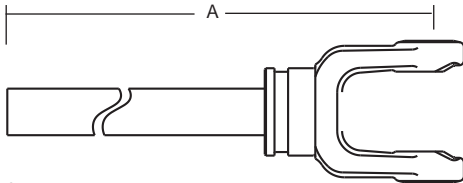
Assembly instructions included with guard bearing kit
NOTE: Guards must rotate freely on yokes

Easy Lock™ Replacement Kit

Part Number: 13005000 (4-per Kit)



Yoke & Shaft Assembly



1 3/16" Square Shaft

Stock Number	Dim. "A"
10003531	17.69"
10003535	21.69"
10003542	28.69"
10003548	33.19"
10003560	44.94"

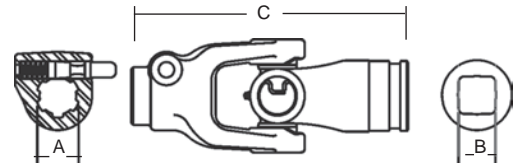
Guard Chain Kit

Insert the "S" hook through the guard loop and crimp shut



Part Number: 13006500 (2-per Kit)

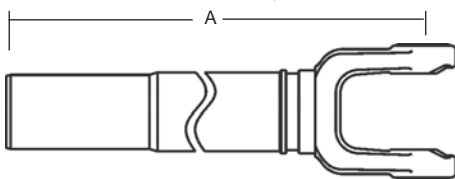
Universal Joint



Quick Disconnect to Shaft Weld Yoke
Repair Kit — 13002006

Stock Number	Dim. "A" Bore	Dim. "B" Bore	Dim. "C"
15063500	1 3/8" × 6 Spl.	1 3/16" Sq.	8 7/8"

Yoke, Tube & Sleeve Assembly

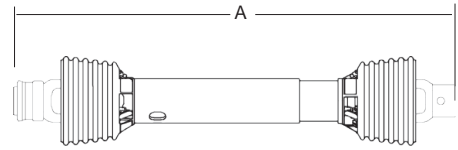
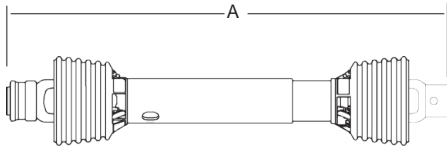


1 3/16" Square

Stock Number	Dim. "A"
11003531	17.69"
11003535	21.69"
11003543	29.69"
11003548	34.69"
11003560	46.69"

35 Series (cont'd.)

Drivelines

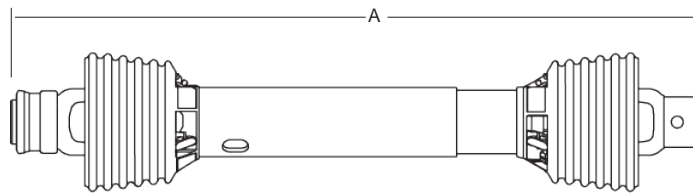


Drivelines are furnished without Cross & Bearing Kit and Implement Yoke. Select kit and yoke as required. When cross & bearing kit and yoke are assembled, the overall compressed length of the driveline will be 31", 35", 48" or 60".

Drivelines are furnished without Cross & Bearing Kit and Outboard Yokes. Select kit and outboard yokes as required. When cross & bearing kit and outboard yokes are assembled, the overall compressed length of the driveline will be 39", 48" or 60".

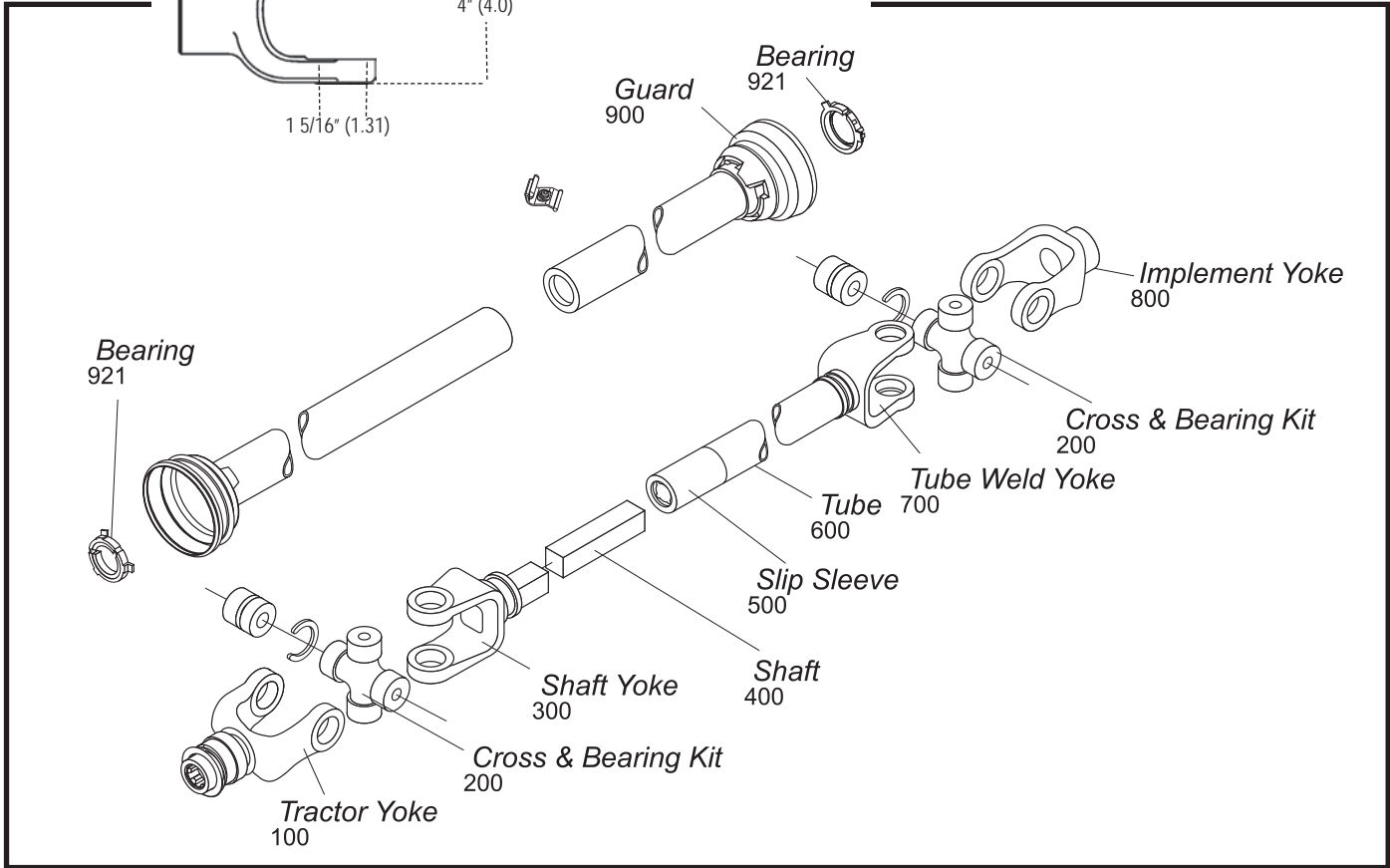
Stock Number	Tractor Yoke	Overall Compressed Length Dim. "A"	Max Running Length
14003531	1 3/8" x 6 Spl. Q.D.	31"	40"
14003535	1 3/8" x 6 Spl. Q.D.	35"	47"
14003548	1 3/8" x 6 Spl. Q.D.	48"	72"
14003560	1 3/8" x 6 Spl. Q.D.	60"	96"

Stock Number	Overall Compressed Length Dim. "A"	Max Running Length
14013548	48"	72"
14013560	60"	96"
14023539 (with crosses installed)	39"	51"
14023548 (with crosses installed)	48"	72"



Stock Number	Tractor Yoke	Implement Yoke	Overall Compressed Length Dim. "A"	Max. Running Length	Application
14003507	1 3/8" x 6 Spl. Q.D.	1 3/8" Round 1/2" Shear Pin Hole	64 7/8"	88 7/8"	7 ft. Pull Type Rotary Cutter
14003524	1 3/8" x 6 Spl. Q.D.	1 1/2" Round 3/8" Keyway	48"	71 3/4"	Pumps
14003536	1 3/8" x 6 Spl. Safety Slide Lock	1 3/8" x 6 Spl. Safety Slide Lock	36"	47 3/4"	All Purpose
14013531	1 3/8" x 21 Spl. Safety Slide Lock	1 1/8" Hex Clamp	31"	44"	Combine Header

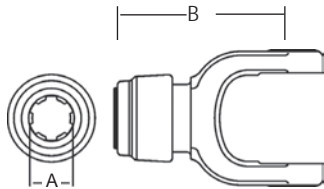
44 Series



Tractor Yoke

Safety Slide Lock

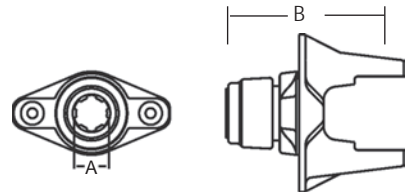
Repair Kit —
*13004000
**13004020



Stock Number	Dim. "A" Bore	Dim. "B"
101-4406*	1 3/8" × 6 Spl.	5 1/2"
101-4420**	1 3/4" × 20 Spl.	6 1/4"
101-4421*	1 3/8" × 21 Spl.	5 1/2"

Ball Shear Device

With Safety Slide Lock
Repair Kit —
*13004000
**13004020

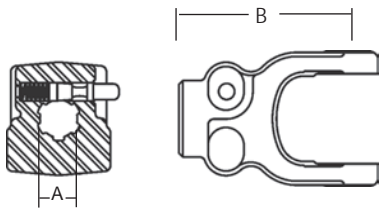


Stock Number	Dim. "A" Bore	Dim. "B"	Shear Bolt
104-4406*	1 3/8" × 6 Spl.	5 7/8"	(2) 3/8" x 16 Gr. 5
104-4420**	1 3/4" × 20 Spl.	5 3/8"	(2) 3/8" x 16 Gr. 5
104-4421*	1 3/8" × 21 Spl.	5 7/8"	(2) 3/8" x 16 Gr. 5

Replacement Shear Bolt Part # 11-10445

Quick Disconnect

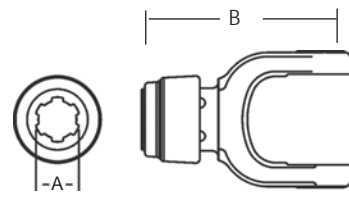
Repair Kit —
*13002006
***13002020
****13002021



Stock Number	Dim. "A" Bore	Dim. "B"
102-4406*	1 3/8" × 6 Spl.	5 5/16"
102-4420**	1 3/4" × 20 Spl.	5 1/2"
102-4421***	1 3/8" × 21 Spl.	5 5/16"

Auto-Lok

Repair Kit —
*13004000
**13004020



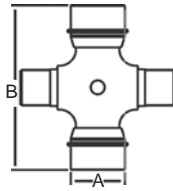
Stock Number	Dim. "A" Bore	Dim. "B"
110-4406*	1 3/8" × 6 Spl.	5 1/2"
110-4420**	1 3/4" × 20 Spl.	6 1/4"
110-4421*	1 3/8" × 21 Spl.	5 1/2"

44 Series (cont'd.)

Cross & Bearing Kit (R-Kit)

(Recommended 8 hour grease interval)

Snap Ring Located in Bushing

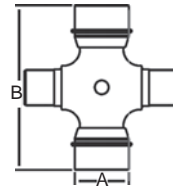


Stock Number	Dim. "A"	Dim. "B"
200-4400	1 5/16"	4"

Extended Lubrication Cross & Bearing Kit (E-Kit)

(Recommended 50 hour grease interval)

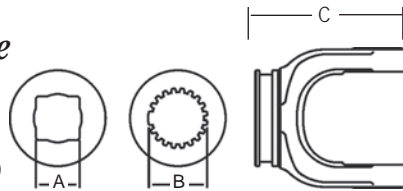
Snap Ring Located in Bushing



Stock Number	Dim. "A"	Dim. "B"
201-4400	1 5/16"	4"

Shaft Weld Yoke

With Bearing Groove
(Guard must rotate freely on yoke)



Stock Number	Dim. "A" Bore	Dim "B" Bore	Dim. "C"
300-4400	1 5/16" Sq.		4 1/8"
302-4400		1 11/16" x 20 Spl.	3 11/16"

Shaft

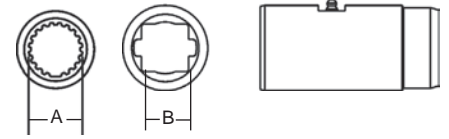
1 5/16" Square



Stock Number	Length
400-0021	6'
404-0021	3'

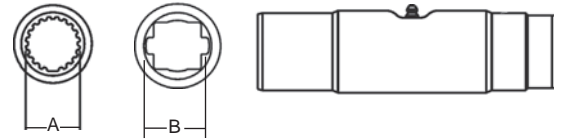
Slip Sleeve

With Grease Groove



Stock Number	Length	Dim. "A"	Dim. "B"	Fits Tube Size.
500-4400	5"		1 5/16" Sq.	2 1/2" (.120 Wall)
505-3500	5"	1 11/16" x 20 Spl.		2 1/2" (.120 Wall)

With Grease Reservoir



Stock Number	Length	Dim. "A"	Dim. "B"	Fits Tube Size.
503-3500	8"	1 11/16" x 20 Spl.		2 1/2" (.120 Wall)
504-3500	8"		1 5/16" Sq.	2 1/2" (.120 Wall)

Tube

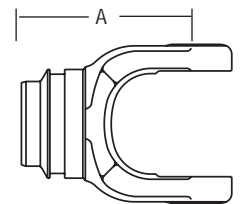
2 1/2" (.120 Wall)



Stock Number	Length
602-4400	6'
604-4400	3'

Tube Weld Yoke

With Bearing Groove
(Guard must rotate freely on yoke)



Stock Number	Dim. "A"	Fits Tube Size
701-4400	4 5/8"	2 1/2" (.120 Wall)
*702-4400 (with bore)	4 5/8"	2 1/2" (.120 wall)

* Bore through for Telescoping

Spline Shaft

Induction Hardened



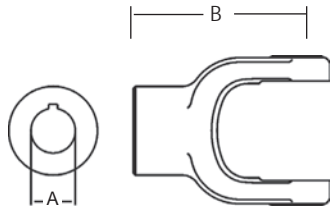
Stock Number	Dim.	Dim. "A"	Length	Major Dim.
404-2120		1 5/16" x 20 Spl.	3'	1.380/1.375
404-2720		1 11/16" x 20 Spl.	3'	1.790/1.785

44 Series (cont'd.)

Implement Yoke

Round Bore

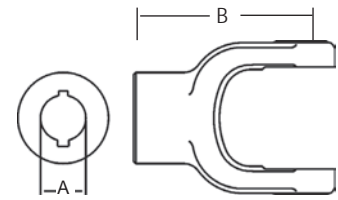
With Keyway & Set Screw



Stock Number	Dim. "A" Bore	Dim. "B"	Standard Keyway
800-4420	1 1/4"	4 5/8"	1/4"
800-4422	1 3/8"	4 5/8"	5/16"
800-4423	1 7/16"	4 5/8"	3/8"
800-4424	1 1/2"	4 5/8"	3/8"
800-4426	1 5/8"	4 5/8"	3/8"
800-4428	1 3/4"	4 5/8"	3/8"
800-4432	2"	4 5/8"	1/2"

Round Bore

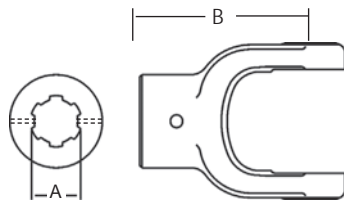
Double Keyway & Set Screw



Stock Number	Dim. "A" Bore	Dim. "B"	Double Keyway
806-4420	1 1/4"	4 5/8"	5/16" & 1/4"
806-4422	1 3/8"	4 5/8"	5/16" & 1/4"
806-4424	1 1/2"	4 5/8"	5/16" & 3/8"

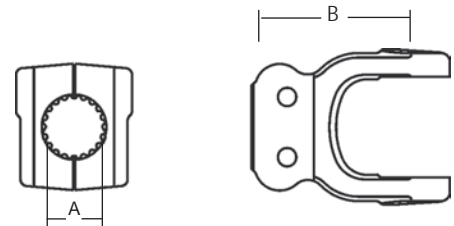
Spline Bore

With 21/64" Pin Hole



Stock Number	Dim. "A" Bore	Dim. "B"
801-4406	1 3/8" x 6 Spl.	4 5/8"
801-4421	1 3/8" x 21 Spl.	4 5/8"

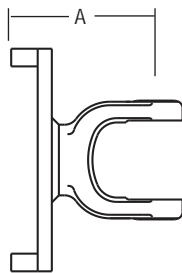
Clamp Yoke



Stock Number	Dim. "A" Bore	Dim. "B"
807-4406	1 3/8" x 6 Spl.	4 5/8"
807-4420	1 3/4" x 20 Spl.	4 5/8"
807-4421	1 3/8" x 21 Spl.	4 5/8"
807-4427	1 3/4" x 27 Spl.	5"

Torque Limiter Flange

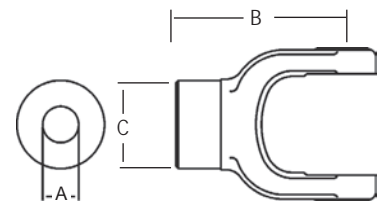
(Interchanges with Great Lakes Clutch)



Stock Number	Dim. "A"
803-4400	5 1/8"

Stock Bore

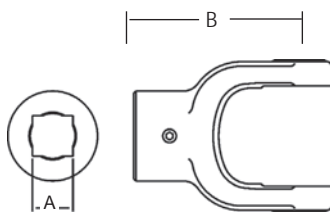
With Hub O. D. Turned



Stock Number	Dim. "A" Bore	Dim. "B"	Dim. "C"
809-4416	1"	4 5/8"	2 1/2"

Square Bore

With Set Screw

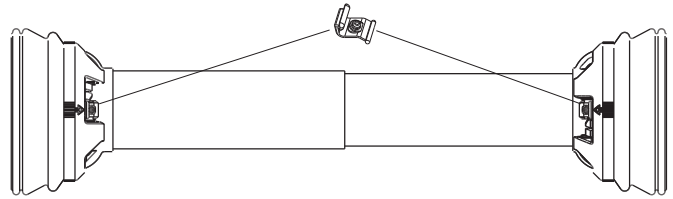


Stock Number	Dim. "A" Bore	Dim. "B"
804-4418	1 1/8"	4 5/8"

44 Series (cont'd.)

Guard

* Order Bearings as Required



Stock Number	Overall Driveline Length	Bearing Kit (2-per kit)
902-3548	48"	921-4400
902-3560	60"	921-4400

Assembly instructions included with guard bearing kit
NOTE: Guards must rotate freely on yokes

Guard Chain Kit

Insert the "S" hook through the guard loop and crimp shut

Part Number: 13006500 (2-per Kit)

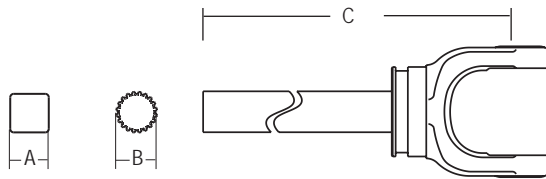


Easy Lock™ Replacement Kit

Part Number: 13005000 (4-per Kit)

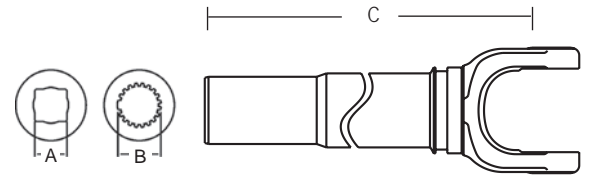


Yoke & Shaft Assembly



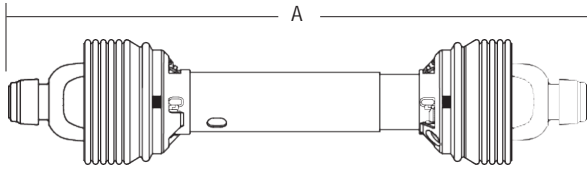
Stock Number	Dim. "A"	Dim. "B"	Dim. "C"
10004448	1 5/16" Sq.		33.12"
10004460	1 5/16" Sq.		45.12"
10014448		1 11/16" × 20 Spl.	33.12"

Yoke, Tube & Sleeve Assembly



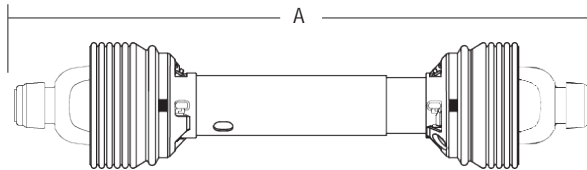
Stock Number	Dim. "A" Bore	Dim. "B" Bore	Dim. "C"
11004448	1 5/16" Sq.		33.63"
11004460	1 5/16" Sq.		45.62"
11014448		1 11/16" × 20 Spl.	33.63"

Drivelines



Drivelines are furnished without Cross & Bearing Kit and Implement Yoke. Select kit and yoke as required. When cross & bearing kit and yoke are assembled, the overall compressed length of the driveline will be 48" or 60".

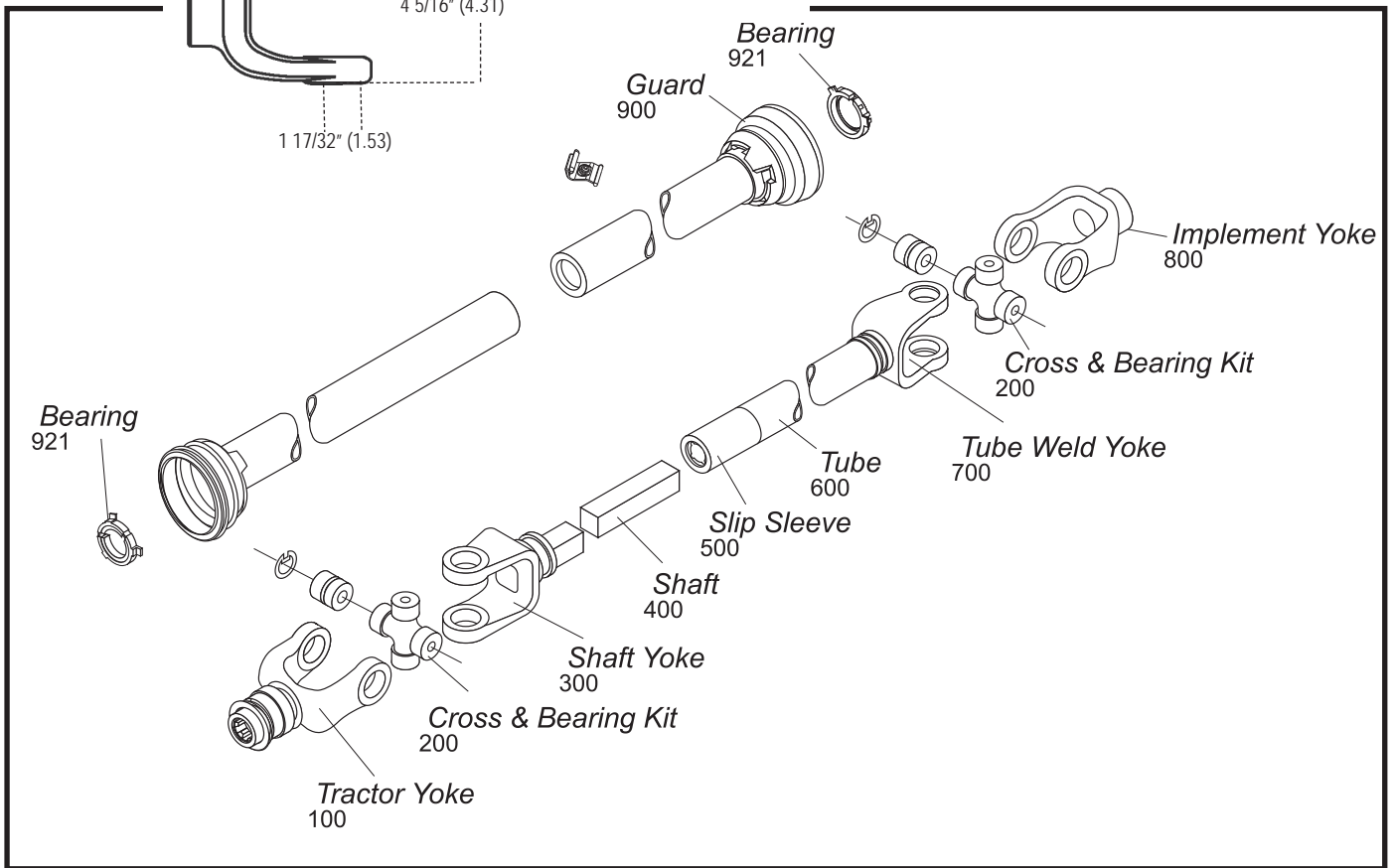
Stock Number	Shaft Size	Tractor Yoke	Overall Compressed Length Dim. "A"	Max. Length
14004448	1 5/16"	1 3/8" × 6 Spl. Q.D.	48"	72"
14004460	1 5/16"	1 3/8" × 6 Spl. Q.D.	60"	96"
14044448	1 11/16" × 20 Spl.	1 3/8" × 6 Spl. Q.D.	48"	72"



Drivelines are furnished without Cross & Bearing Kit and Outboard Yokes. Select kit and outboard yokes as required. When cross & bearing kit and outboard yokes are assembled, the overall compressed length of the driveline will be 48" or 60".

Stock Number	Shaft	Overall Compressed Length Dim. "A"	Max. Length
14014448	1 5/16"	48"	72"
14014460	1 5/16"	60"	96"
14054448	1 11/16" × 20 Spl.	48"	72"

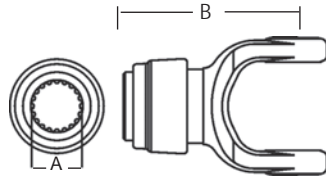
55 Series



Tractor Yoke

Safety Slide Lock

Repair Kit —
*13004000
**13004020

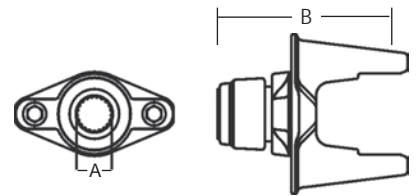


Stock Number	Dim. "A" Bore	Dim. "B"
101-5506*	1 3/8" × 6 Spl.	5 13/16"
101-5520**	1 3/4" × 20 Spl.	6"
101-5521*	1 3/8" × 21 Spl.	5 13/16"

Ball Shear Device

With Safety Slide Lock

Repair Kit —
*13004000
**13004020

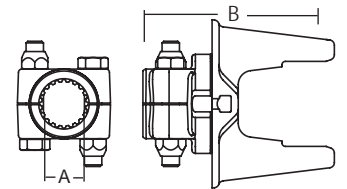


Stock Number	Dim. "A" Bore	Dim. "B"	Shear Bolt
104-5506*	1 3/8" × 6 Spl.	6 1/8"	(2) 3/8" x 16 Gr. 5
104-5520**	1 3/4" × 20 Spl.	6 5/8"	(2) 3/8" x 16 Gr. 5
104-5521*	1 3/8" × 21 Spl.	6 1/8"	(2) 3/8" x 16 Gr. 5

Replacement Shear Bolt Part # 11-10445

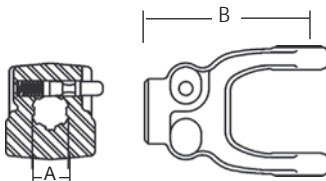
Ball Shear Device Clamp-Style

Stock Number	Dim. "A" Bore	Dim. "B"
114-5520	1 3/4" × 20 Spl.	5 13/16"



Quick Disconnect

Repair Kit —
*13002006
**13002021
***13002020
****13002806

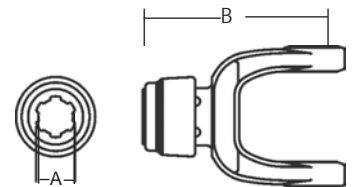


Stock Number	Dim. "A" Bore	Dim. "B"
102-5506*	1 3/8" × 6 Spl.	5 5/8"
102-5521**	1 3/8" × 21 Spl.	5 1/8"
102-5520***	1 3/4" × 20 Spl.	6 1/8"
102-5528****	1 3/4" × 6 Spl.	5 5/8"

Auto-Lok

Repair Kit
*13004000
**13004020

Stock Number	Dim. "A" Bore	Dim. "B"
110-5506*	1 3/8" × 6 Spl.	5 13/16"
110-5520**	1 3/4" × 20 Spl.	6"
110-5521*	1 3/8" × 21 Spl.	5 13/16"

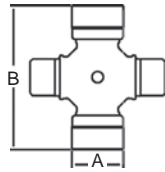


Cross & Bearing Kit

(R-Kit)

(Recommended 8 hour grease interval)

Snap Ring Located in Yoke



Stock Number	Dim. "A"	Dim. "B"
200-5500	1 17/32"	4 5/16"

Spline Shaft

Induction Hardened



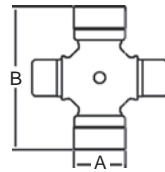
Stock Number	Dim. "A"	Length	Major Dim.
404-2720	1 11/16" x 20 Spl.	3'	1.790/1.785

Extended Lubrication Cross & Bearing Kit

(E-Kit)

(Recommended 50 hour grease interval)

Snap Ring Located in Yoke



Stock Number	Dim. "A"	Dim. "B"
201-5500	1 17/32"	4 5/16"

Slip Sleeve

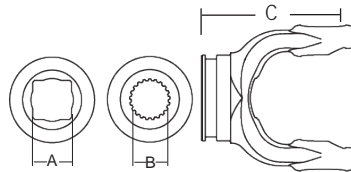


With Grease Groove

Stock Number	Dim. "A" Bore	Dim. "B" Bore	Length	Fits Tube Size.
500-4400		1 5/16" Sq.	5"	2 1/2" (.120 Wall)
505-3500	1 11/16" x 20 Spl.		5"	2 1/2" (.120 Wall)

Shaft Weld Yoke

With Bearing Groove
(Guard must rotate freely on yoke)



Stock Number	Dim. "A" Bore	Dim. "B" Bore	Dim. "C"
300-5500	1 5/16" Sq.		4 1/8"
301-5500*	1 3/16" Sq.		4 3/8"
302-5500		1 11/16" x 20 Spl.	3 3/4"

*Use 04-15155 Nylon Bearing

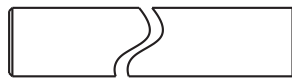
With Grease Reservoir



Stock Number	Dim. "A" Bore	Dim. "B" Bore	Length	Fits Tube Size.
503-3500	1 11/16" x 20 Spl.		8"	2 1/2" (.120 Wall)
504-3500		1 5/16" Sq.	8"	2 1/2" (.120 Wall)

Shaft

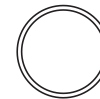
1 5/16" Square



Stock Number	Length
400-0021	6'
404-0021	3'

Tube

2 1/2" (.120 Wall)

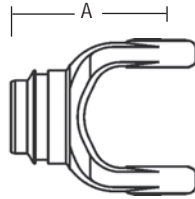


Stock Number	Length
602-4400	6'
604-4400	3'

55 Series (cont'd.)

Tube Weld Yoke

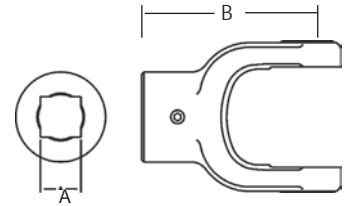
With Bearing Groove
(Guard must rotate freely on yoke)



Stock Number	Dim. "A"	Fits Tube Size
701-5500	4 5/8"	2 1/2" (.120 wall)
*704-5500 (with bore)	4 5/8"	2 1/2" (.120 wall)

* Bore through for Telescoping

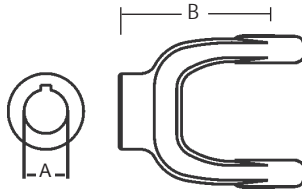
Square Bore With Set Screw



Stock Number	Dim. "A" Bore	Dim. "B"
804-5520	1 1/4"	4 5/8"

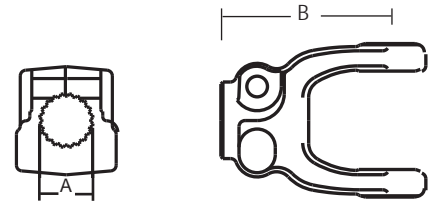
Implement Yoke

Round Bore
With Keyway & Set Screw



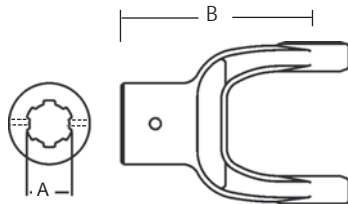
Stock Number	Dim. "A" Bore	Dim. "B"	Standard Keyway
800-5522	1 3/8"	4 1/2"	5/16"
800-5524	1 1/2"	4 5/8"	3/8"
800-5526	1 5/8"	4 5/8"	3/8"
800-5528	1 3/4"	4 5/8"	3/8"
800-5532	2"	4 5/8"	1/2"

Clamp Yoke



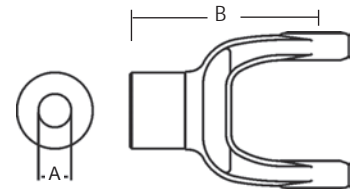
Stock Number	Dim. "A" Bore	Dim. "B"
807-5506	1 3/8" x 6 Spl.	5 5/8"
807-5520	1 3/4" x 20 Spl.	5 1/4"
807-5521	1 3/8" x 21 Spl.	5 1/4"
807-5527	1 3/4" x 27 Spl.	5 5/8"
807-5528	1 3/4" x 6 Spl.	5 5/8"

Spline Bore
With 21/64" Pin Hole



Stock Number	Dim. "A" Bore	Dim. "B"
801-5506	1 3/8" x 6 Spl.	4 1/2"
801-5521	1 3/8" x 21 Spl.	4 1/2"

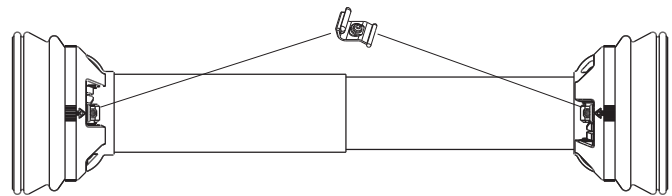
Stock Bore With Hub O. D. Turned



Stock Number	Dim. "A" Bore	Dim. "B"
809-5516	1"	5 5/8"

Guard

Order Bearings as Required



Stock Number	Overall Driveline Length	Bearing Kit (2-per kit)
902-3548	48"	921-4400
902-3560	60"	921-4400

Assembly instructions included with guard bearing kit
NOTE: Guards must rotate freely on yokes

Guard Chain Kit

Insert the "S" hook through the guard loop and crimp shut



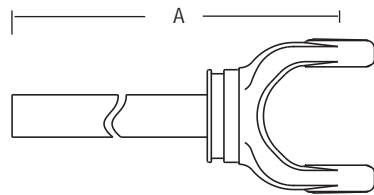
Part Number: 13006500 (2-per Kit)

Easy Lock™ Replacement Kit

Part Number: 13005000 (4-per Kit)

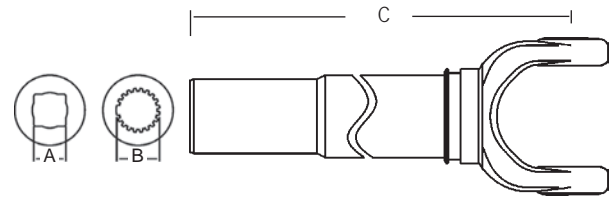


Yoke & Shaft Assembly



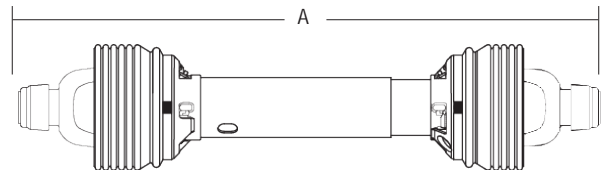
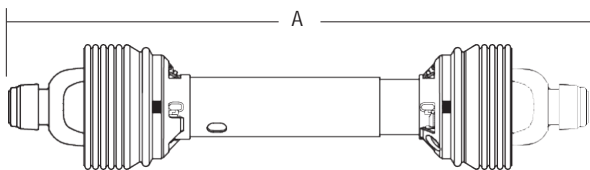
Stock Number	Shaft Size	Dim. "A"
10005548	1 5/16"	32.75"
10005560	1 5/16"	44.88"
10015548	1 11/16" x 20 Spl.	32.75"

Yoke, Tube & Sleeve Assembly



Stock Number	Dim. "A" Bore	Dim. "B" Bore	Dim. "C"
11005548	1 5/16" Sq.		33.38"
11005560	1 5/16" Sq.		45.38"
11015548		1 11/16" x 20 Spl.	33.38"

Drivelines

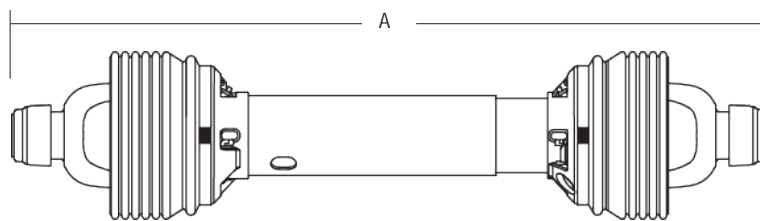


Drivelines are furnished without Cross & Bearing Kit and Implement Yoke. Select kit and yoke as required. When cross & bearing kit and yoke are assembled, the overall compressed length of the driveline will be 48" or 60".

Drivelines are furnished without Cross & Bearing Kit and Outboard Yokes. Select kit and outboard yokes as required. When cross & bearing kit and outboard yokes are assembled, the overall compressed length of the driveline will be 48", 58" or 60".

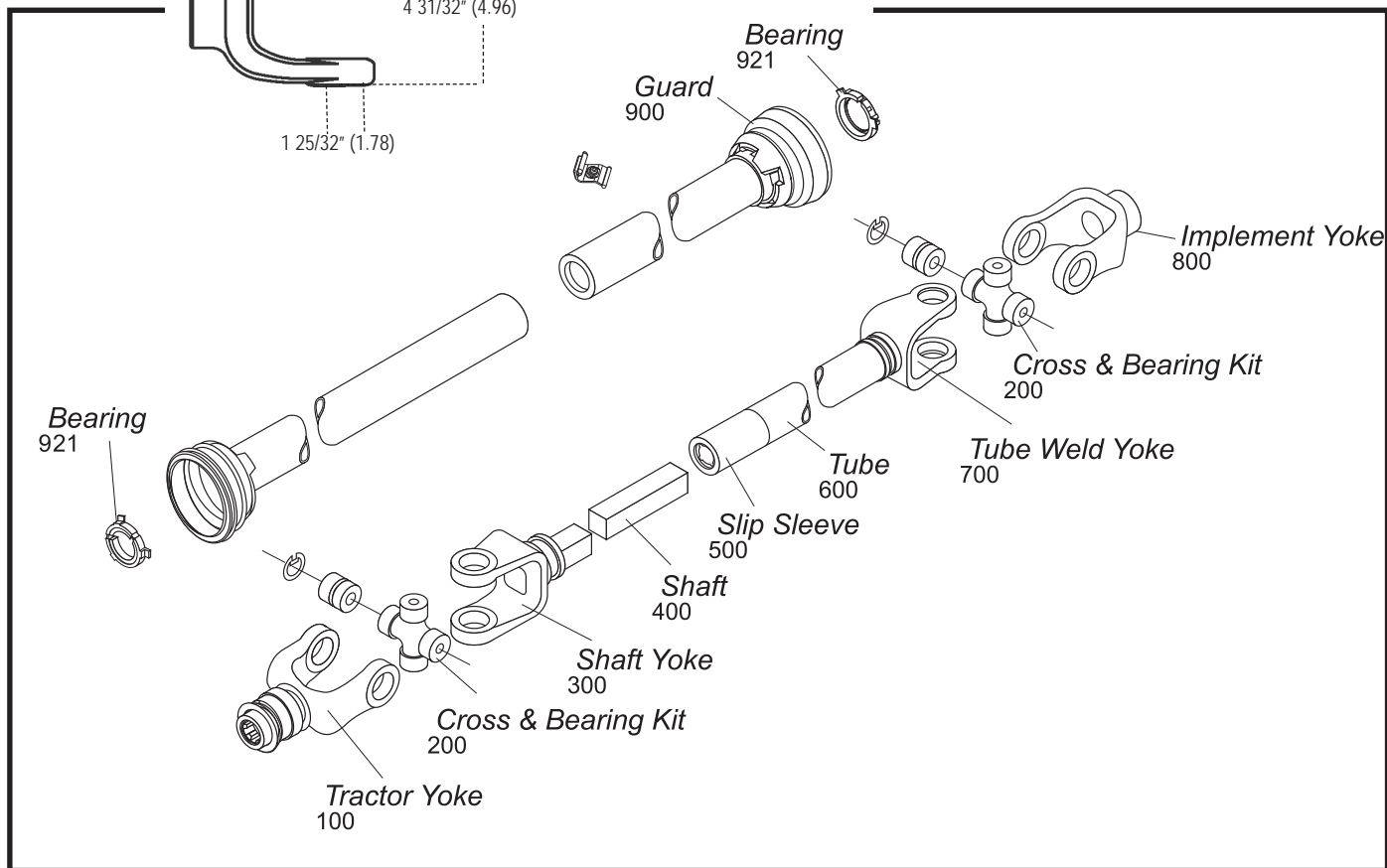
Stock Number	Shaft Size	Tractor Yoke	Overall Compressed Length Dim. "A"	Max. Length
14005548	1 5/16"	1 3/8" x 6 Spl. Q.D.	48"	72"
14005560	1 5/16"	1 3/8" x 6 Spl. Q.D.	60"	96"
14045548	1 11/16" x 20 Spl.	1 3/8" x 6 Spl. Q.D.	48"	72"

Stock Number	Shaft	Overall Compressed Length Dim. "A"	Max. Length
14015548	1 5/16" Sq.	48"	72"
14015560	1 5/16" Sq.	60"	96"
14055548	1 11/16" x 20 Spl.	48"	72"
14055558	1 11/16" x 20 Spl.	58"	92"



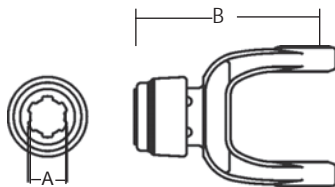
Stock Number	Tractor Yoke	Implement Yoke	Overall Compressed Length Dim. "A"	Max. Length	Application	Shaft Size
14005537	1 3/8" x 6 Spl. Safety Slide Lock	1 3/8" x 6 Spl. Safety Slide Lock	37"	50"	All Purpose	1 5/16" Sq.
14005546	1 3/4" x 20 Spl. Safety Slide lock	1 3/4" Rd. w/ Keyway and (2) Set Screws	46"	68"	All Purpose	1 11/16" x 20 Spl.

77 Series



Tractor Yoke

Auto-Lok
Repair Kit -
*19-15198
**13004020
***26-13387

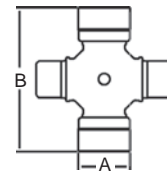


Stock Number	Dim. "A" Bore	Dim. "B"
110-7706*	1 3/8" x 6 Spl.	7"
110-7720**	1 3/4" x 20 Spl.	7"
110-7721*	1 3/8" x 21 Spl.	7"
110-7728***	1 3/4 x 6 Spl.	7"

Extended Lubrication Cross & Bearing Kit (E-Kit)

(Recommended 50 hr. grease interval)

Snap Ring Located in Yoke



Stock Number	Dim. "A"	Dim. "B"
201-7700	1 25/32"	4 31/32"

Spline Shaft

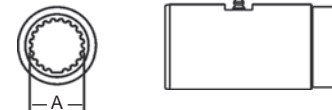
Spline Shaft
Induction Hardened



Stock Number	Dim. "A"	Length	Major Dim.
404-7720	2" x 20 Spl.	3'	1.978/1.973

Slip Sleeve

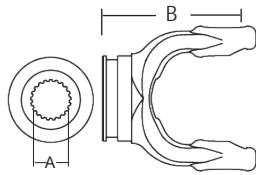
With Grease Groove



Stock Number	Dim. "A" Bore	Length	Fits Tube Size
505-7700	2" x 20 Spl.	5"	3" (.188 wall)

Shaft Weld Yoke

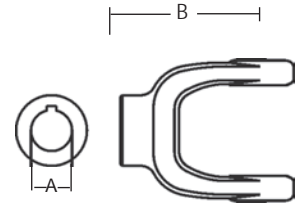
With Bearing Groove
(Guard must rotate freely on yoke)



Stock Number	Dim. "A" Bore	Dim. "B" Bore
302-7700	2" x 20 Spl.	5 1/4"

Implement Yoke

Round Bore
With Keyway & Set Screw



Stock Number	Dim. "A" Bore	Dim. "B"	Standard Keyway
800-7728	1 3/4"	5 3/4"	3/8"
800-7732	2"	6 1/4"	1/2"

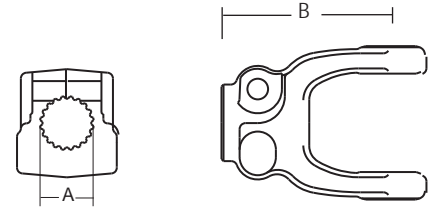
Tube

3" (.188 Wall)



Stock Number	Length
602-7700	6'
604-7700	3'

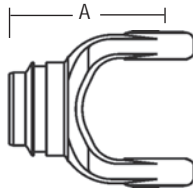
Clamp Yoke



Stock Number	Dim. "A" Bore	Dim. "B"
807-7720	1 3/4" x 20 Spl.	6 1/4"
807-7732	2" Rd.	6 1/4"

Tube Weld Yoke

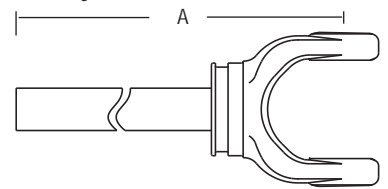
With Bearing Groove
(Guard must rotate freely on yoke)



Stock Number	Dim. "A"	Fits Tube Size
*704-7700 (with bore)	5 3/4"	3" (.188 wall)

*Bore through for Telescoping

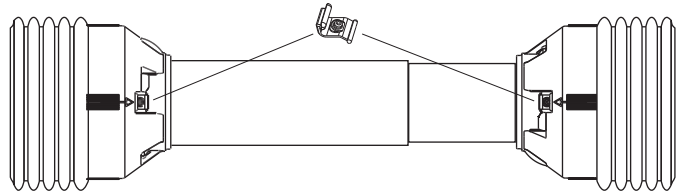
Yoke & Shaft Assembly



Stock Number	Shaft Size	Dim. "A"
10017748	2" x 20 Spl.	32.75"

Guard

* Order Bearings as Required

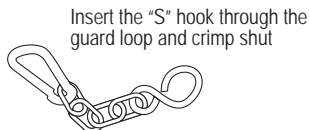


Stock Number	Overall Driveline Length	Bearing Kit (2-per kit)
900-4548	48"	961-4535
900-4560	60"	961-4535

Assembly instructions included with guard bearing kit
NOTE: Guards must rotate freely on yokes

Guard Chain Kit

Part Number: 13006500 (2-per Kit)



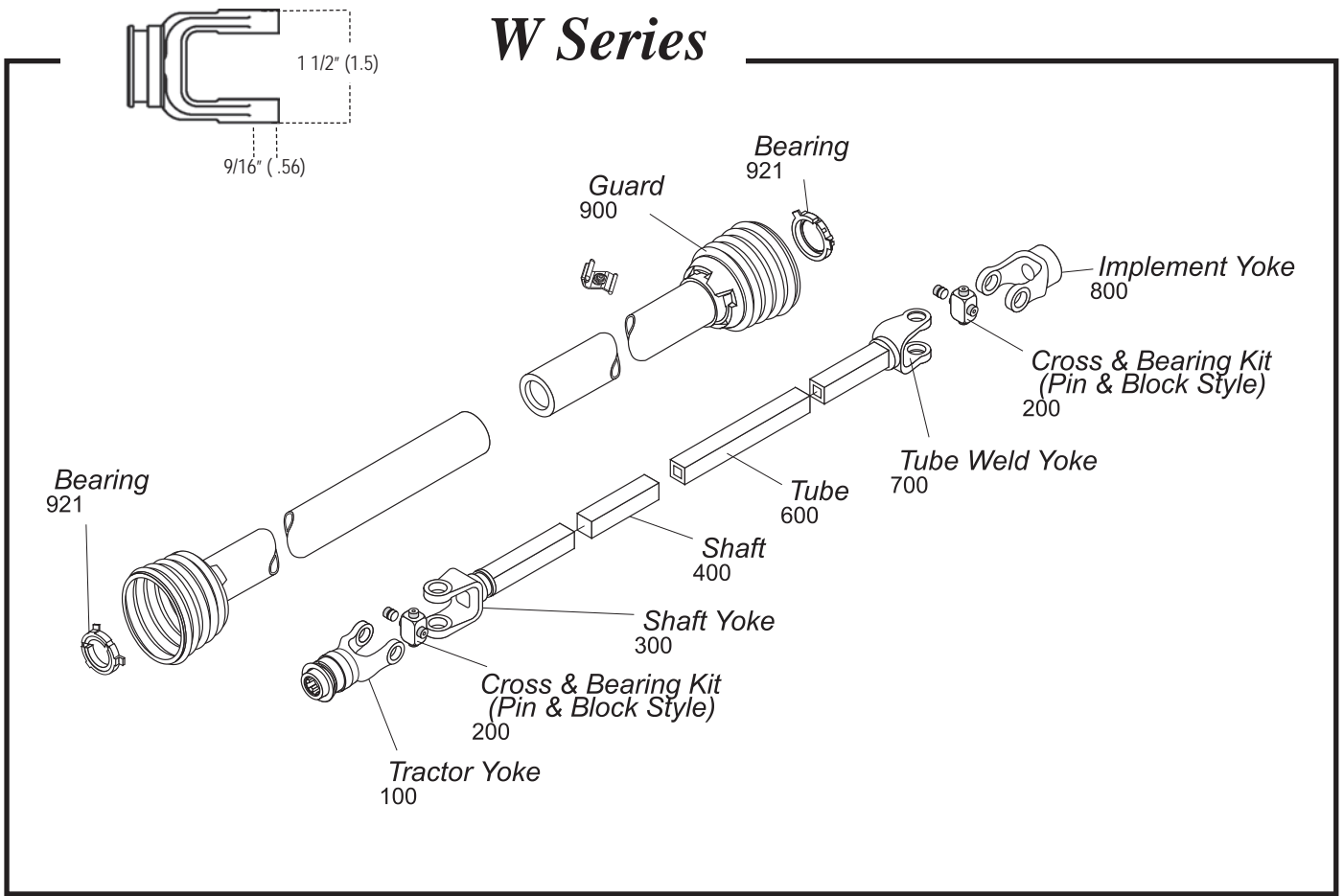
Insert the "S" hook through the guard loop and crimp shut

Easy Lock™ Replacement Kit

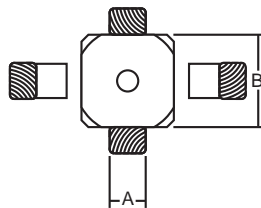
Part Number: 13005000 (4-per Kit)



W Series



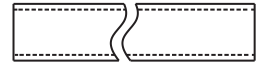
Cross & Bearing Kit (Pin & Block Style)



Zerk Located in Block

Stock Number	Dim. "A"	Dim. "B"
200-0700	9/16"	1 1/2"

Tube



1 1/4" Square O.D.

Stock Number	Length	Fits Shaft
600-0015	6'	15/16" Sq.

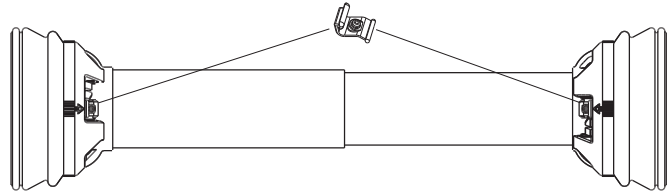
Shaft



15/16" Square

Stock Number	Length	Fits Shaft
400-0015	6'	1 1/4" Sq.

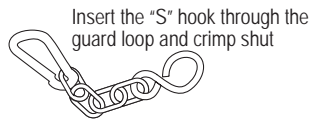
Guard



Stock Number	Overall Driveline Length	Bearing Kit (2-per kit)
900-2548	48"	921-5170

Assembly instructions included with guard bearing kit
 NOTE: Guards must rotate freely on yokes

Guard Chain Kit



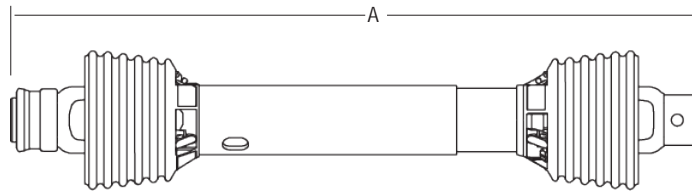
Part Number: 13006500 (2-per Kit)

Easy Lock™ Replacement Kit

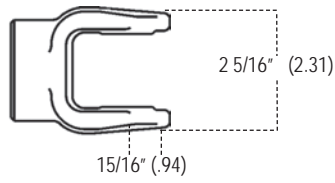
Part Number: 13005000 (4-per Kit)



Drivelines



Use 12 Series driveline for all "W" Series replacement drivelines. See 12 Series (Page 54) for drivelines.

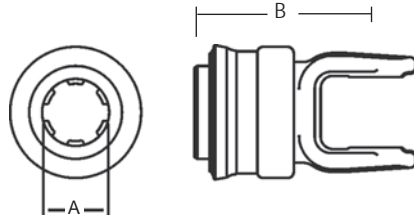


0675 Series

Interchanges with Neapco

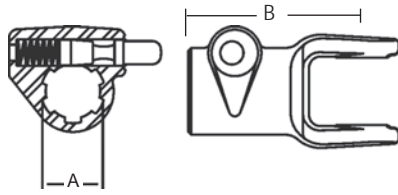
Tractor Yoke

Spring-Lok
Repair Kit - 13003100



Stock Number	Dim. "A" Bore	Dim. "B"
100-0506	1 3/8" × 6 Spl.	3 7/8"

Quick Disconnect
Repair Kit - 13002006

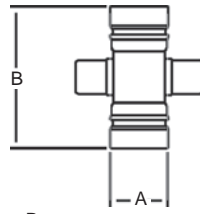


Stock Number	Dim. "A" Bore	Dim. "B"
102-0506	1 3/8" × 6 Spl.	3 7/8"

Cross & Bearing Kit

(R Kit)
(Recommended 8 hr. grease interval)

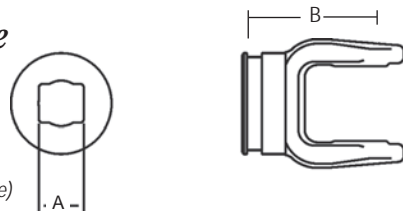
Snap Ring Located in Bushing



Stock Number	Dim. "A"	Dim. "B"
200-0675	15/16"	2 5/16"

Shaft Weld Yoke

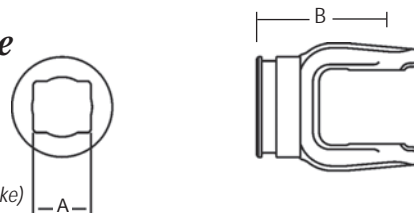
With Bearing Groove
(Guard must rotate freely on yoke)



Stock Number	Dim. "A" Bore	Dim. "B"
300-0500	3/4" × 7/8"	2 1/2"

Tube Weld Yoke

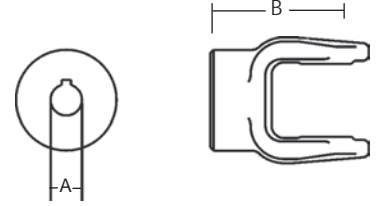
With Bearing Groove
(Guard must rotate freely on yoke)



Stock Number	Dim. "A" Bore	Dim. "B"
700-0500	1" × 1 1/8"	2 1/2"

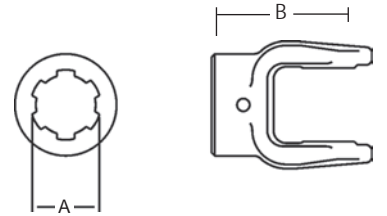
Implement Yoke

Round Bore
With Keyway & Set Screw



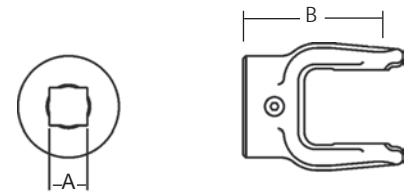
Stock Number	Dim. "A" Bore	Dim. "B"	Standard Keyway
800-0512	3/4"	2 1/2"	3/16"

Spline Bore
With 21/64" Pin Hole



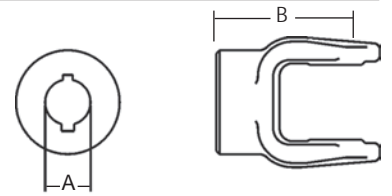
Stock Number	Dim. "A" Bore	Dim. "B"
801-0506	1 3/8" × 6 Spl.	2 1/2"

Square Bore
With Set Screw

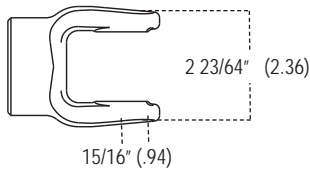


Stock Number	Dim. "A" Bore	Dim. "B"
804-0512	3/4"	2 1/2"
804-0514	7/8"	2 1/2"
804-0516	1"	2 1/2"

Round Bore
With Double Keyway & Set Screw



Stock Number	Dim. "A" Bore	Dim. "B"	Double Keyway
806-0514	7/8"	2 1/2"	3/16" & 1/4"
806-0516	1"	2 1/2"	3/16" & 1/4"
806-0518	1 1/8"	2 1/2"	1/4" & 5/16"
806-0520	1 1/4"	2 1/2"	1/4" & 5/16"

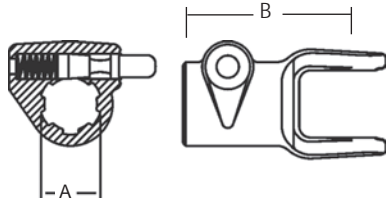


1000 Series

Interchanges with Spicer and Neapco

Tractor Yoke

Quick Disconnect
Repair Kit - 13002006

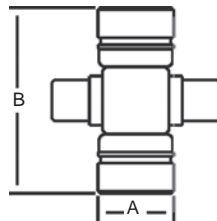


Stock Number	Dim. "A" Bore	Dim. "B"
102-1006	1 3/8" x 6 Spl.	3 7/8"

Cross & Bearing Kit (R Kit)

(Recommended 8 hr. grease interval)

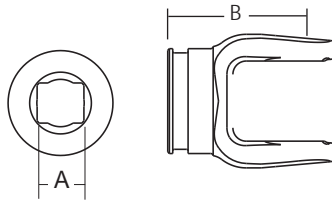
Snap Ring Located in Bushing



Stock Number	Dim. "A"	Dim. "B"
200-1000	15/16"	2 23/64"

Shaft Weld Yoke

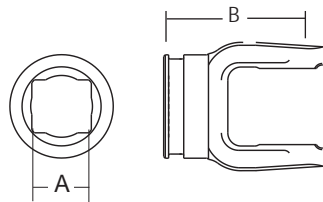
with Bearing Groove
(Guard must rotate freely on yoke)



Stock Number	Dim. "A" Bore	Dim. "B"
300-1000	3/4" x 7/8" Rect.	2 1/2"

Tube Weld Yoke

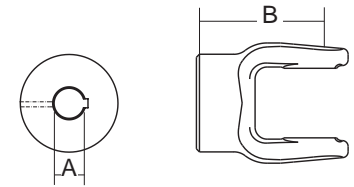
with Bearing Groove
(Guard must rotate freely on yoke)



Stock Number	Dim. "A" Bore	Dim. "B"
700-1000	1" x 1 1/8"	2 1/2"

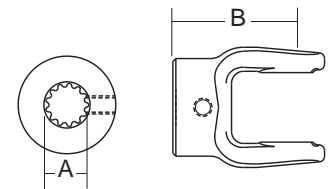
Implement Yoke

Round Bore
Keyway & Set Screw



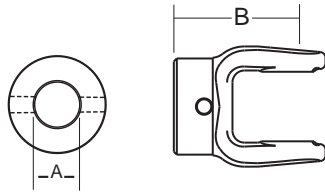
Stock Number	Dim. "A" Bore	Keyway	Dim. "B"
800-1010	5/8"	3/16" (.19)	2 1/2" (2.50)
10001-1044	5/8"	3/16" (.19)	1 11/16" (1.69)
10001-1045	3/4"	3/16" (.19)	2 1/2" (2.50)
10001-1038	3/4"	3/16" (.19)	1 11/16" (1.69)
10001-1056	3/4"	1/4" (.25)	2 1/2" (2.50)
800-1013	13/16"	1/4" (.25)	2 1/2" (2.50)
10001-1057	7/8"	3/16" (.19)	2 1/2" (2.50)
10001-1049	7/8"	1/4" (.25)	2 1/2" (2.50)
10001-1048	7/8"	1/4" (.25)	2 1/2" (2.50)
800-1015	15/16"	1/4" (.25)	2 1/2" (2.50)
800-1016	1"	3/16" (.19)	2 1/2" (2.50)
10001-1051	1"	1/4" (.25)	2 1/2" (2.50)
10001-1033	1"	1/4" (.25)	2 1/2" (2.50)
10001-1041	1"	1/4" (.25)	1 11/16" (1.69)
800-1017	1 1/16"	1/4" (.25)	2 1/2" (2.50)
10001-1053	1 1/8"	1/4" (.25)	2 1/2" (2.50)
10001-1052	1 1/8"	5/16" (.31)	2 1/2" (2.50)
800-1019	1 3/16"	5/16" (.31)	2 1/2" (2.50)
10001-1058	1 1/4"	1/4" (.25)	2 1/2" (2.50)
10001-1055	1 1/4"	5/16" (.31)	2 1/2" (2.50)
10001-1054	1 1/4"	5/16" (.31)	2 1/2" (2.50)
10001-1060	1 3/8"	5/16" (.31)	2 1/2" (2.50)
800-1022	1 3/8"	3/8"	2 1/2" (2.50)

Spline Bore
with Set Screw



Stock Number	Dim. "A" Bore	Dim. "B"
801-1013	.901" x 13 Spl.	2 1/2" (2.50)
801-1018	1 1/8" x 6 Spl.	2 1/2" (2.50)

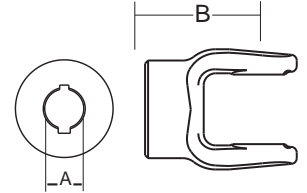
Shear Pin



Stock Number	Dim. "A" Bore	Dim. "B"	Pinhole Size
802-1015	15/16"	2 1/2" (2.50)	11/32" (.34) #6 Taper
802-1016	1"	2 1/2" (2.50)	1/4" (.25)
10001-1059	1"	2 1/2" (2.50)	3/8" (.38)
802-1020	1 1/4"	2 1/2" (2.50)	5/16" (.31)
802-1024	1 1/2"	2 1/2" (2.50)	9/32" (.28)
10001-1034	1 1/2"	2 1/2" (2.50)	17/64" (.27)

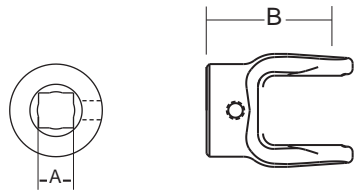
Round Bore

Double Keyway & Set Screw



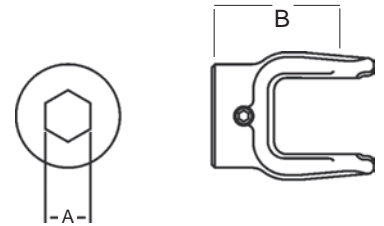
Stock Number	Dim. "A" Bore	Double Keyway	Dim. "B"
806-1012	3/4"	3/16" & 1/4"	2 1/2" (2.50)
806-1013	13/16"	3/16" & 1/4"	2 1/2" (2.50)
806-1014	7/8"	3/16" & 1/4"	2 1/2" (2.50)
806-1016	1"	3/16" & 1/4"	2 1/2" (2.50)
806-1018	1 1/8"	3/16" & 1/4"	2 1/2" (2.50)
10001-1061	1 1/8"	1/4" & 5/16"	2 1/2" (2.50)
806-1020	1 1/4"	1/4" & 5/16"	2 1/2" (2.50)
806-1019	1 3/16"	1/4" & 5/16"	2 1/2" (2.50)

Square Bore
with Set Screw



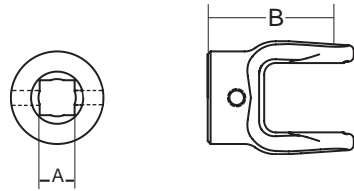
Stock Number	Dim. "A" Bore	Dim. "B"
804-1012	3/4"	2 1/2" (2.50)
10001-1042	3/4"	1 11/16" (1.69)
804-1014	7/8"	2 1/2" (2.50)
10001-1043	7/8"	1 11/16" (1.69)
804-1016	1"	2 1/2" (2.50)
804-1018	1 1/8"	2 1/2" (2.50)
10001-1037	1 1/8"	2 1/2" (2.50)

Hexagon Bore
with Set Screw



Stock Number	Dim. "A" Bore	Dim. "B"
805-1014	7/8"	2 1/2"
805-1018	1 1/8"	2 1/2"

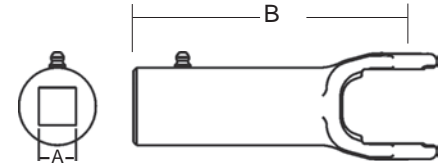
Square Bore
with Pinhole



Stock Number	Dim. "A" Bore	Dim. "B"	Pinhole Size
10001-1035	3/4"	2 1/2" (2.50)	5/16" (.312)

Slip Sleeve Yoke

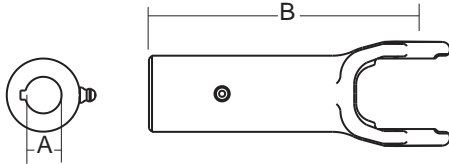
Square



Stock Number	Dim. "A" Bore	Dim. "B"
808-1012	3/4"	5 1/2"
808-1014	7/8"	5 1/2"
808-1016	1"	5 1/2"

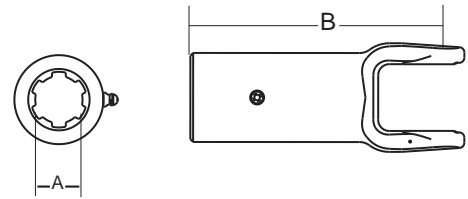
Slip Sleeve Yoke cont...

Round



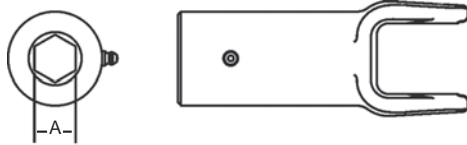
Stock Number	Dim. "A" Bore	Keyway	Dim. "B"
810-1012	3/4"	3/16"	5 1/2" (5.50)
810-1013	13/16"	1/4"	5 1/2" (5.50)
810-1014	7/8"	1/4"	5 1/2" (5.50)
810-1016	1"	1/4"	5 1/2" (5.50)
810-1018	1 1/8"	1/4"	5 1/2" (5.50)
10001-1062	1 1/8"	5/16"	5 1/2" (5.50)
810-1020	1 1/4"	1/4"	5 1/2" (5.50)
10001-1013	1 1/4"	5/16"	5 1/2" (5.50)
10001-1066	1 1/8"	1/4"	5 1/2" (5.50)

Spline

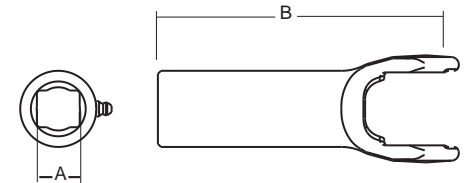


Stock Number	Dim. "A" Bore	Dim. "B"
812-1018	1 1/8" x 10 Spl.	5 1/2" (5.50)
812-1020	1 1/4" x 6 Spl.	5 1/2" (5.50)

Hex



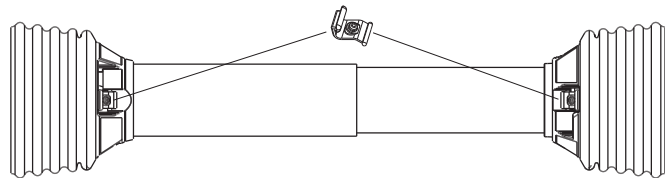
Stock Number	Dim. "A" Bore
811-1014	7/8"
811-1018	1 1/8"



Stock Number	Dim. "A" Bore	Dim. "B"
813-1012	3/4" x 7/8"	5-1/2" (5.50)
10001-1015	1"	5-1/2" (5.50)

Guard

Order Bearings As Required

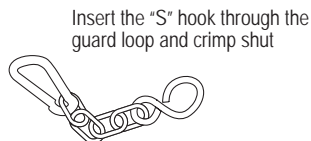


Stock Number	Overall Driveline Length	Bearing Kit (4-per kit)
900-2548	48"	921-0600
900-2560	60"	921-0600

Assembly instructions included with guard bearing kit
NOTE: Guards must rotate freely on yokes

Guard Chain Kit

Part Number: 13006500 (2-per Kit)



Insert the "S" hook through the guard loop and crimp shut

Easy Lock™ Replacement Kit

Part Number: 13005000 (4-per Kit)



1800 Series

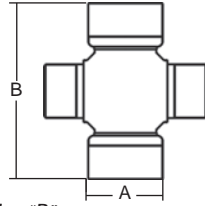
Interchanges with Neapco

Cross & Bearing Kit

(R Kit)

(Recommended 8 hr. grease interval)

Snap Ring Located in Yoke



Stock Number	Dim. "A"	Dim. "B"
200-1875	1"	3 7/32"

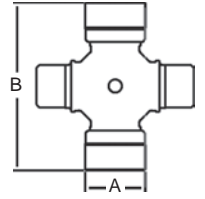
14 Series

Cross & Bearing Kit

(R Kit)

(Recommended 8 hr. grease interval)

Interchanges with Howse
Snap Ring Located in Bushing



Stock Number	Dim. "A"	Dim. "B"
200-1401	1 1/8"	3 5/32"

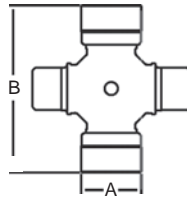
1 FR Series

Cross & Bearing Kit

(R Kit)

(Recommended 8 hr. grease interval)

Snap Ring Located in Yoke



Stock Number	Dim. "A"	Dim. "B"
200-0100	7/8"	2 15/16"

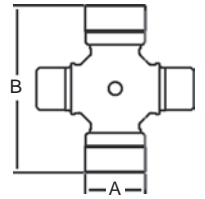
35 Series

Cross & Bearing Kit

(R Kit)

(Recommended 8 hr. grease interval)

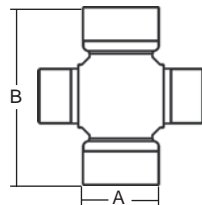
Interchanges with Howse
Snap Ring Located in Bushing



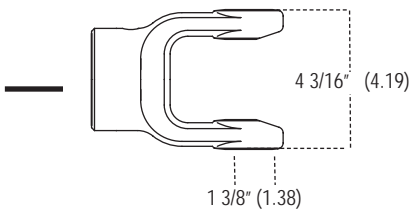
Stock Number	Dim. "A"	Dim. "B"
200-3501	1 1/4"	3 7/32"

Vehicular Cross & Bearing Kit

Interchanges with Spicer



Stock Number	Spicer U - Joint Series	Dim. "A"	Dim. "B"
200-0310	1310	1 1/16"	3 7/32"
200-0350	1350	1 3/16"	3 5/8"
200-0410	1410	1 3/16"	4 3/16"



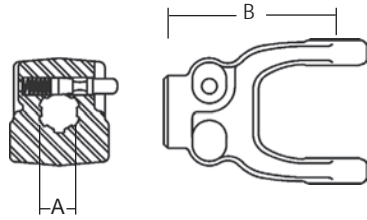
2600 Series

Interchanges with Neapco & Walterscheid 1480

Tractor Yoke

Repair Kit -
* 13002006
** 13002020
*** 13002021

Quick Disconnect



Stock Number	Dim. "A" Bore	Dim. "B"
102-2606*	1 3/8" x 6 Spl.	5 5/16"
102-2620**	1 3/4" x 20 Spl.	5 5/16"
102-2621***	1 3/8" x 21 Spl.	5 5/16"

Shaft



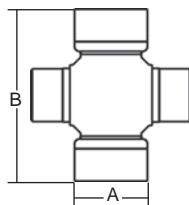
1 5/16" Square

Stock Number	Length
400-0021	6'
401-0021	10'
404-0021	3'

Cross & Bearing Kit

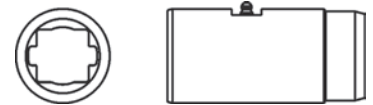
(R Kit)
(Recommended 8 hr. grease interval)

Snap Ring Located in Yoke



Stock Number	Dim. "A"	Dim. "B"
200-2600	1 3/8"	4 3/16"

Slip Sleeve



1 5/16" Square
With Grease Groove

Stock Number	Length	Fits Tube Size
500-2600	5"	2 3/4" (.109 Wall)

Shaft Weld Yoke

With Bearing Groove
(Guards must rotate freely on the yoke)



Stock Number	Dim. "A" Bore	Dim. "B"
300-2600	1 5/16" Sq.	4 1/8"

Tube

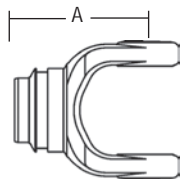
2 3/4" (.109 Wall)



Stock Number	Length
602-2600	6'

Tube Weld Yoke

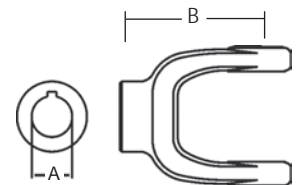
With Bearing Groove
(Guards must rotate freely on the yoke)



Stock Number	Dim. "A"	Fits Tube Bore
701-2600	4 5/8"	2 3/4" (.109 Wall)

Implement Yoke

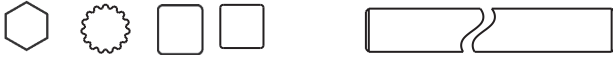
Round Bore
With Keyway & Set Screw



Stock Number	Dim. "A" Bore	Standard Keyway	Dim. "B"
800-2622	1 3/8"	5/16"	4 5/8"
800-2624	1 1/2"	3/8"	4 5/8"
800-2628	1 3/4"	3/8"	4 5/8"

NORTH AMERICAN SHAFTING & TUBING

North American Shaft



Stock Number	Size	Length
400-0012	3/4" Sq.	6'
400-0014	7/8" Sq.	6'
400-0015	15/16" Sq.	6'
400-0016	1" Sq.	6'
400-0019	1 3/16" Sq.	6'
400-0021	1 5/16" Sq.	6'
400-1214	3/4" x 7/8" Rect.	6'
400-1618	1" x 1 1/8" Rect.	6'
402-0014	7/8" Hex	6'
402-0016	1" Hex	6'
402-0018	1 1/8" Hex	6'
402-0020	1 1/4" Hex	6'
404-0019	1 3/16" Sq.	3'
404-0021	1 5/16" Sq.	3'
404-1214	3/4" x 7/8" Rect.	3'
404-1615H	1" x 15 Spl. (Induction Hardened)	3'
404-1618	1" x 1 1/8" Rect.	3'
404-2120	1 5/16" x 20 Spl. (Induction Hardened)	3'
404-2720	1 11/16" x 20 Spl. (Induction Hardened)	3'
404-7720	1 7/8" X 20 Spl. (Induction Hardened)	3'

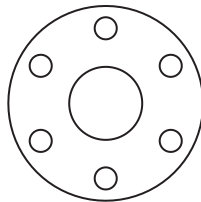
North American Tube



Stock Number	Size	Length
600-0012	1" Sq. Fits Shaft 3/4" Sq.	6'
600-0015	1 1/4" Sq. (.120 Wall) Fits Shaft 15/16"	6'
600-0016	1 1/4" Sq. (.109 Wall) Fits Shaft 1" Sq.	6'
600-1618	1" x 1 x 1/8" Rect.O.D - Fits Shaft 3/4" x 7/8"	6'
600-2022	1 1/4" x 1 3/8" Rect.O.D - Fits Shaft 1" x 1 1/8"	6'
602-0600	1 1/2" Rd. (.065 Wall) O.D.	6'
602-1400	2" Rd. (.083 Wall) O.D.	6'
602-2600	2 3/4" Rd. (.109 Wall) O.D.	6'
602-3500	2 1/8" Rd. (.120 Wall) O.D.	6'
602-4400	2 1/2" Rd. (.120 Wall) O.D.	6'
604-0600	1 1/2" Rd. (.065 Wall) O.D.	3'
604-1400	2" Rd. (.083 Wall) O.D.	3'
604-1618	1" x 1 1/8" Rect.O.D - Fits Shaft 3/4" x 7/8"	3'
604-2022	1 1/4" x 1 3/8" Rect. O.D - Fits Shaft 1" x 1 1/8"	3'
604-3500	2 1/8" Rd. (.120 Wall) O.D.	3'
604-4400	2 1/2" Rd. (.120 Wall) O.D.	3'

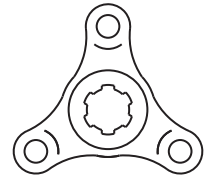
Shock Absorbing Flexible Coupling Disc

6" O.D.



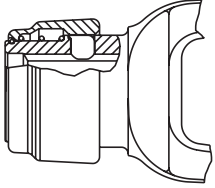
Stock Number	Description
970-2110	Disc only w/ 5/8" Holes
970-2108	Disc only w/ 1/2" Holes

Spider



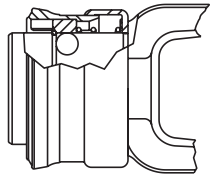
Stock Number	Description
81011-1016	1 3/8" x 6 Spl. with 5/8" Bolt Hole
81013-1053	1 3/8" x 6 Spl. with 21/64" Pinholes & 5/8" Bolt Hole
81021-1097	1 3/4" Rd. with 3/8" Keyway & 5/8" Bolt Hole

Locking Device



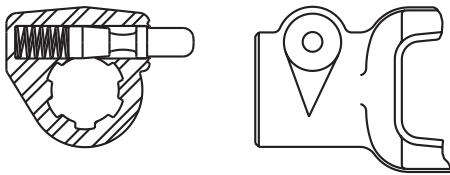
Safety Slide Lock

An exclusive Weasler replacement component, the Safety Slide Lock* yoke is locked in place by two hardened pawls with compound radii that conform to the groove in the shaft for full contact. The device is particularly applicable where there is appreciable end thrust.



Spring Lok

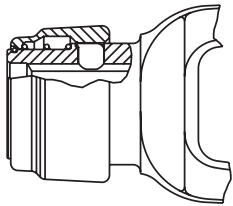
The collar is spring loaded for ease of installation and positive locking to tractor shaft



Quick Disconnect

A smooth plunger eliminates sharp projections such as x-washers. Trails rather than leads rotation.

Locking Device Repair Kit



*Auto-Lok/Safety Slide Lock

Stock No. 13004000

Repair Kit for Weasler Auto-Lok and Safety Slide Lock
6 Spline & 21 Spline

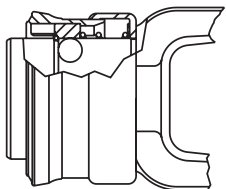
Stock No. 13004020

Repair Kit for Weasler Auto-Lok and Safety Slide Lock
20 Spline

Stock No. 13004015

Repair Kit for 1" x 15 Spl.

This repair kit contains both balls & pawls. When repairing the "Safety Slide Lock" use the pawls only and discard the balls. When repairing the "Auto-Lok" use both the balls and the pawls.



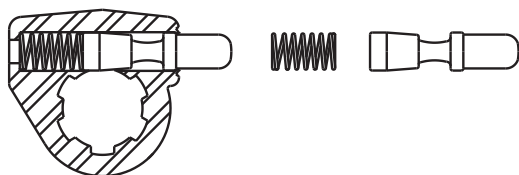
Spring-Lok

Stock No. 13003100

Repair Kit for Weasler Spring-Lok
6 Spline & 21 Spline

Stock No. 13003115

1" x 15 Spline



Quick Disconnect

Stock No. 13002006

Repair Kit for Weasler
and Rockwell 6 Spline

Stock No. 13002806

Repair Kit for 1 3/4" x 6 Spl.

Stock No. 13002021

Weasler 21 Spline and
Hex Quick Disconnect

Stock No. 13002020

Weasler 20 Spline

