



Weasler[®]

Aftermarket Product Guide



Metric

Drivelines and Components

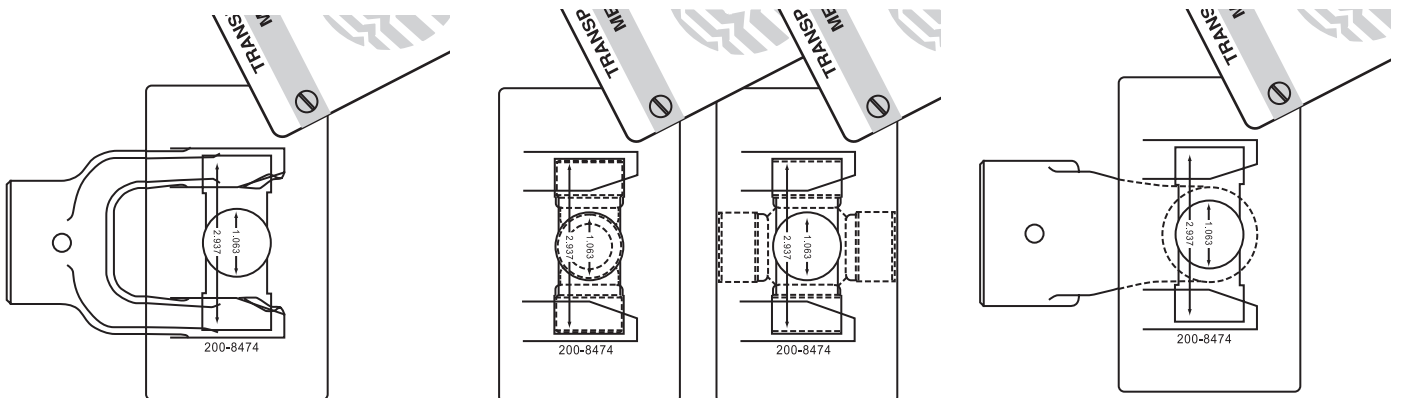
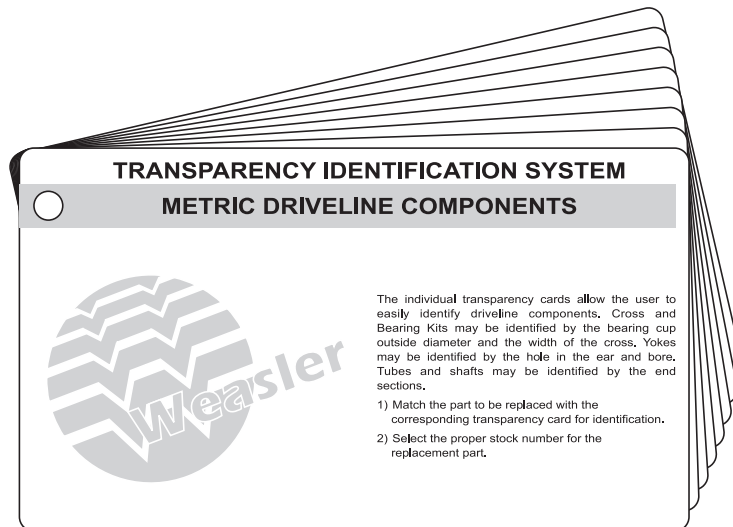
TRANSPARENCY IDENTIFICATION SYSTEM

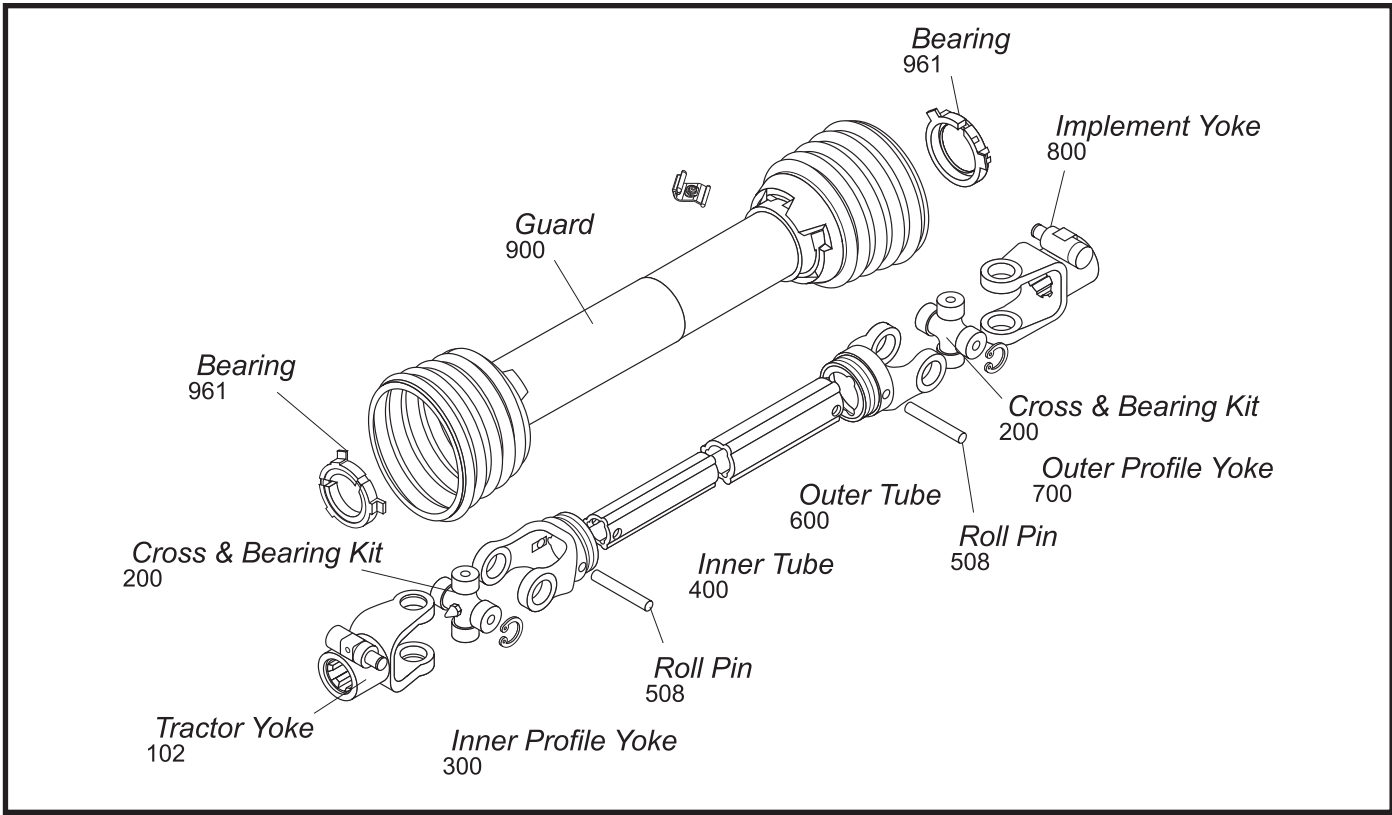
for Metric Driveline Components
(Stock No. 12008500)

The individual transparency cards will allow the user to easily identify driveline components. Cross and Bearing Kits may be identified by the bearing cap outside diameter and the width of the cross. Yokes may be identified by the hole in the ear and profile. Profile tubes may be identified by the end sections.

How to use the Transparency Identification System:

1. Match the part to be replaced with the corresponding transparency card for identification.
2. Select the proper stock number for the replacement part.





Each series has an exploded view for identification purposes. The drawing illustrates the components in the same sequence as an implement input driveline transmitting power from tractor to implement. Each component of the exploded view is identified by an eight-digit stock number to insure correct identification of each component.

Example: For metric components the 102 prefix denotes a Quick Disconnect Tractor Yoke on the exploded view.

When ordering any component in the exploded view (for any series), be sure the stock number begins with the appropriate three-digit prefix.

The digit immediately following the dash (-) will be a 6, 7 or 8.

A 6 indicates the item is interchangeable with Bondioli & Pavesi ONLY.

A 7 indicates the item is interchangeable with Walterscheid ONLY.

An 8 indicates the item is interchangeable with BOTH Bondioli & Pavesi AND Walterscheid.

This interchangeability designation is used for all components EXCEPT roll pins, guards and guard bearings.

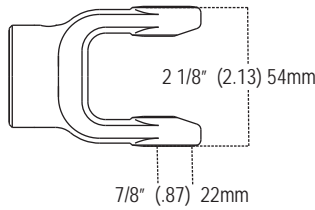
The following chart lists the approximate size replacement for Metric Driveline. These are not an exact interchange, and should be used as a general replacement guide only.

CROSS & BEARING KIT CROSS REFERENCE CHART FOR METRIC COMPONENTS

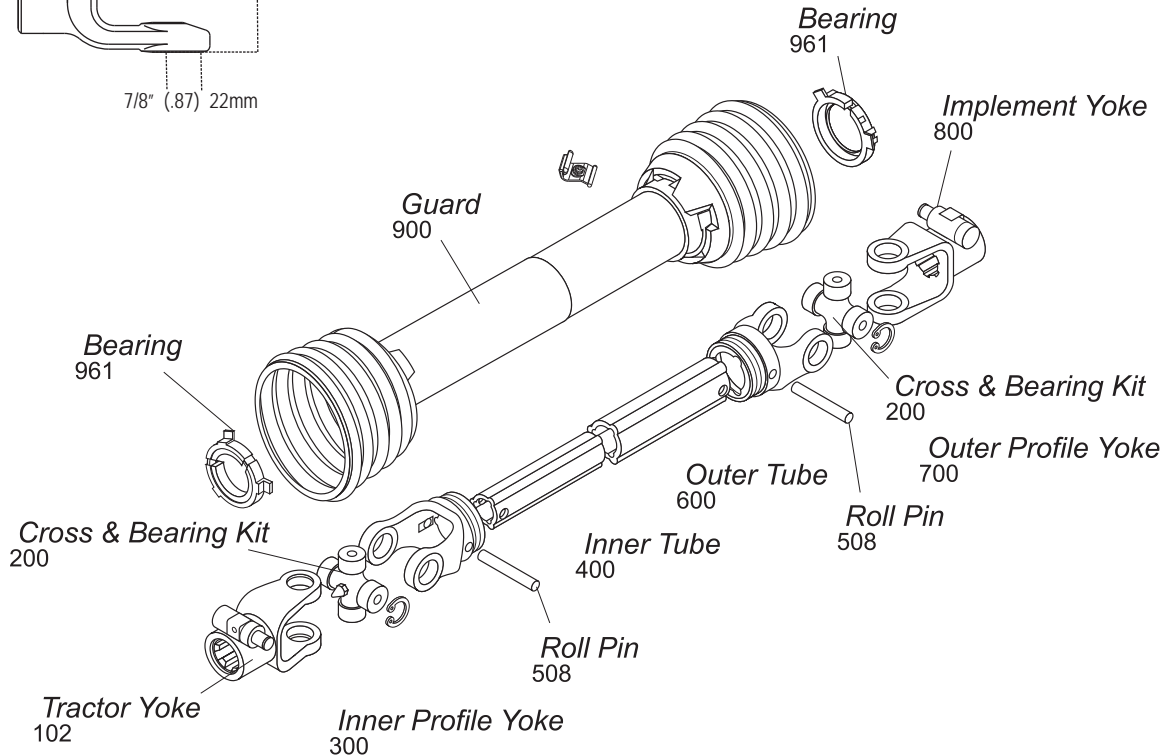
<u>Cross & Bearing R=Kit Stock #</u>	<u>Cross & Bearing E-KIT Stock No</u>	<u>Interchanges with Bondioli & Pavesi Series</u>	<u>Interchanges with Walterscheid Series</u>
200-6154	201-6154	1	N/A
200-6580	201-6580	5	N/A
200-6794	201-6794	7N	N/A
200-6806	201-6806	8	N/A
200-6908	201-6908	9	N/A
200-7004	201-7004	N/A	2600
200-7155	201-7155	N/A	2100
200-7676	201-7676	N/A	2400
200-7890	N/A	II	N/A
200-7989	201-7989	N/A	2500
200-8261	201-8261	2	2200
200-8370	201-8370	3	1
200-8474	201-8474	4	2300
200-8692	201-8692	6	220
200-8706	201-8706	7 (Old Series)	230
200-7276	201-7276	N/A	2280
200-7491	201-7491	N/A	2380
200-7694	201-7694	N/A	2480
200-7906	201-7906	N/A	2580

DRIVELINE REPLACEMENT CHART

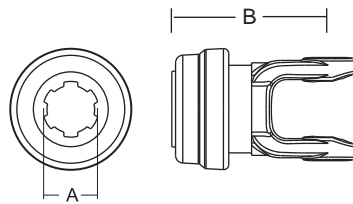
<u>Weasler Series</u>	<u>Replacement for:</u>	<u>Weasler Series</u>	<u>Replacement for:</u>
6	Bondioli & Pavesi 1 & 2 Series Walterscheid 2100 & 2200 Series	35	Bondioli & Pavesi 5 Series Walterscheid 220 & 2400 Series
12	Bondioli & Pavesi 3 Series Walterscheid I Series	44	Bondioli & Pavesi 6 & 7 Series Walterscheid II Series
14	Bondioli & Pavesi 4 Series Walterscheid 2300 Series	55	Bondioli & Pavesi 8 & 9 Series Walterscheid 2500 & 2600 Series



1 Series



Tractor Yoke



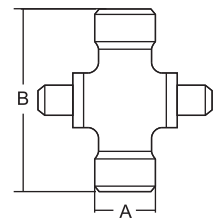
Safety Slide Lock
Repair Kit — *19-15094

Stock Number	Dim. "A"	Dim. "B"	
		mm	in.
101-6106*	1 3/8" x 6 Spl.	98.0	3.86"
101-6121*	1 3/8" x 21 Spl.	98.0	3.86"

Cross & Bearing Kit (R-Kit)

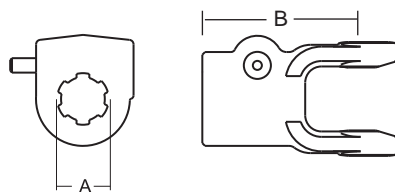
(Recommended 8 hour grease interval)

Snap Ring Located In Yoke



Stock Number	Dim. "A"		Dim. "B"	
	mm	in.	mm	in.
200-6154	22.0	.87"	54.0	2.13"

Quick Disconnect
Repair Kit — *13007138

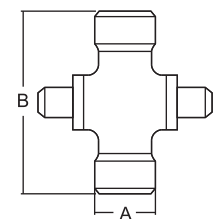


Stock Number	Dim. "A" Bore	Dim. "B"	
		mm	in.
102-6118*	1 1/8" x 6 Spl.	92.0	3.62"
102-6106*	1 3/8" x 6 Spl.	90.0	3.54"
102-6121*	1 3/8" x 21 Spl.	90.0	3.54"

Extended Lubrication Cross & Bearing Kit (E-Kit)

(Recommended 50 hour grease interval)

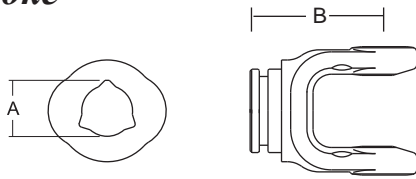
Snap Ring Located In Yoke



Stock Number	Dim. "A"		Dim. "B"	
	mm	in.	mm	in.
201-6154	22.0	.87"	54.0	2.13"

1 Series (cont'd.)

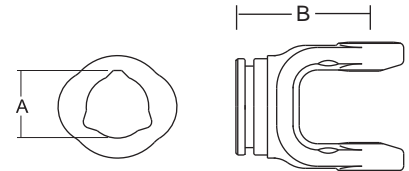
Inner Profile Yoke



With Bearing Groove
(Guard must rotate freely on yoke)

Stock Number	Dim. "A"		Dim. "B"	
	mm	in.	mm	in.
300-6126	27.5	1.08"	66.0	2.60"

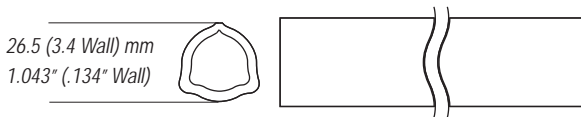
Outer Profile Yoke



With Bearing Groove
(Guard must rotate freely on yoke)

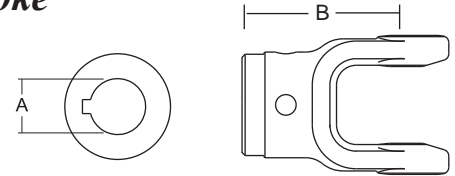
Stock Number	Dim. "A"		Dim. "B"	
	mm	in.	mm	in.
700-6133	33.0	1.30"	66.0	2.60"

Inner Tube



Stock Number	Length	
	m	in.
400-6126	1.5	59.06"
404-6126	1.0	39.37"

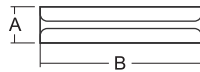
Implement Yoke



Round Bore
With Keyway & Set Screw

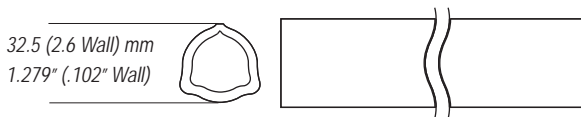
Stock Number	Dim. "A"		Dim. "B"		Standard Keyway	
	mm	in.	mm	in.	mm	in.
800-6108	25.4	1.0"	78.0	3.07"	6.35	.25"
800-6110	31.75	1.25"	78.0	3.07"	6.35	.25"
800-6130	30.0	1.18"	78.0	3.07"	10.0	.39"

Roll Pin



Stock Number	Dim. "A"		Dim. "B"	
	mm	in.	mm	in.
508-0850	8.0	.31"	50.0	1.97"

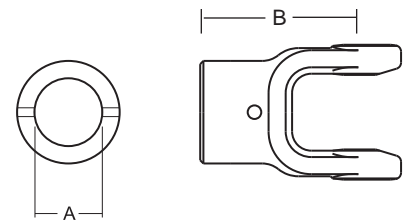
Outer Tube



Stock Number	Length	
	m	in.
600-6133	1.5	59.06"
604-6133	1.0	39.37"

Shear Pin

With Pin Hole

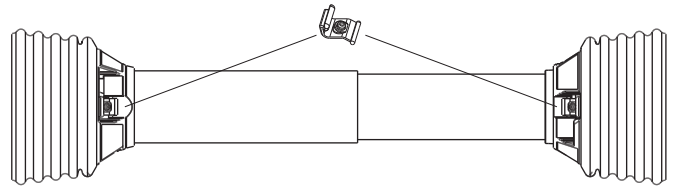


Stock Number	Dim. "A"		Dim. "B"		Pinhole	
	mm	in.	mm	in.	mm	in.
802-6110	31.75	1.25"	78.0	3.07"	6.35	.25"

1 Series (cont'd.)

Guard

Order Bearings As Required



Stock

Number	Fits Overall Driveline Length	Bearing Kit (2-per kit)
900-2548	48"	961-5029
900-2560	60"	961-5029

Assembly instructions included with guard bearing kit

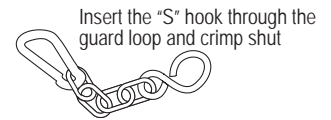
NOTE: Guards must rotate freely on yokes

Easy Lock™ Replacement Kit

Part Number: 13005000 (4-per Kit)

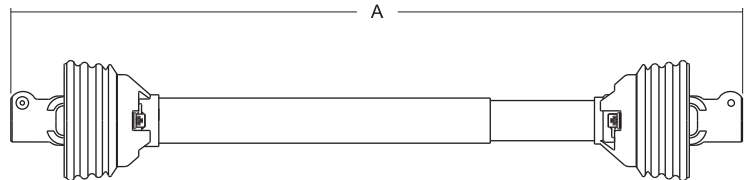


Guard Chain Kit



Part Number: 13006500 (2-per Kit)

Driveline



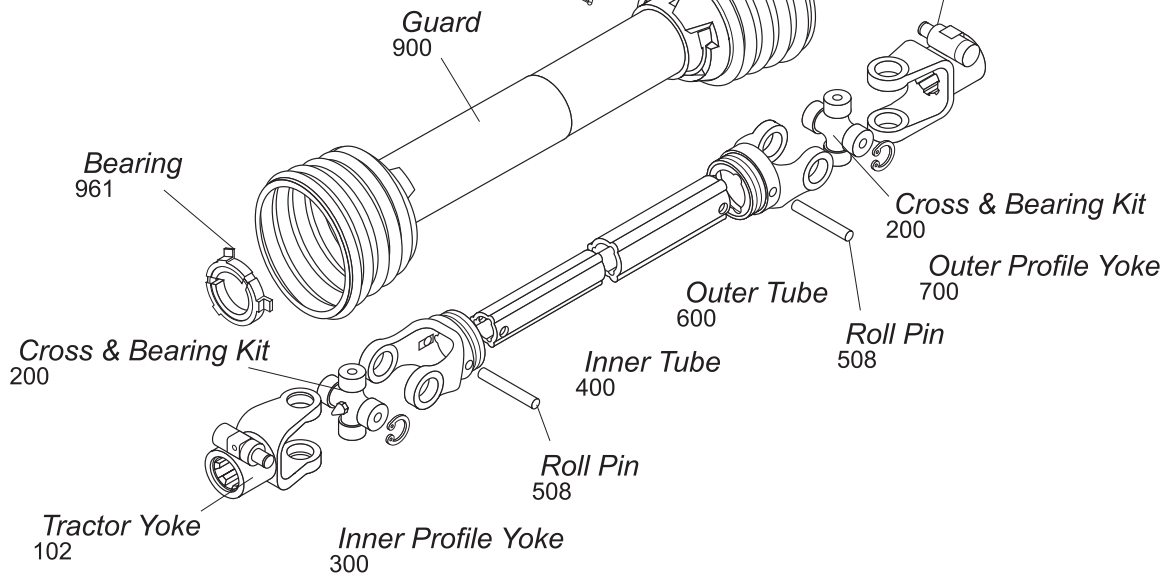
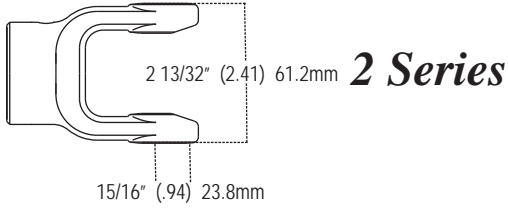
Stock Number	Overall Comp. Length Dim. "A"	Max Running Length	Tractor Yoke	Implement Yoke
14006127	27"	37"	1 3/8" x 6 Spl. QD	1 3/8" x 6 Spl. QD
**14006127ST	27"	37"	1 3/8" x 6 Spl. SSL	1 3/8" x 6 Spl. SSL
14006135	35"	50"	1 3/8" x 6 Spl. QD	1 3/8" x 6 Spl. QD
14006137	37"	53"	1 3/8" x 6 Spl. QD	1 3/8" x 6 Spl. QD
14046148	48"	70"	1 3/8" x 6 Spl. QD	*

* Drivelines are furnished without Cross & Bearing Kit and Implement Yoke. Select kit and yoke as required.

** Please see pages 22-23 for Standard driveline product details.

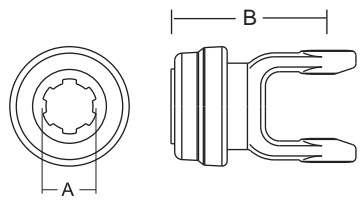
Interchanges with Bondioli & Pavesi

AB2



Cross & Bearing Kit and Outboard Yokes interchange with Walterscheid 2200 Series

Tractor Yoke

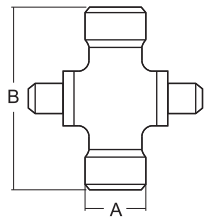


Safety Slide Lock
Repair Kit — *19-15094

Stock Number	Dim. "A"	Dim. "B"	
		mm	in.
101-8206*	1 3/8" x 6 Spl.	106.0	4.17"
101-8221*	1 3/8" x 21 Spl.	106.0	4.17"

Cross & Bearing Kit (R-Kit)

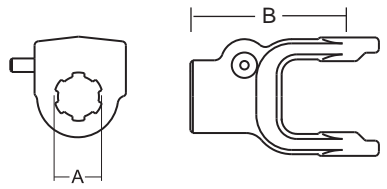
(Recommended 8 hour grease interval)



Snap Ring Located In Yoke

Stock Number	Dim. "A"		Dim. "B"	
	mm	in.	mm	in.
200-8261	23.8	.94"	61.2	2.41"

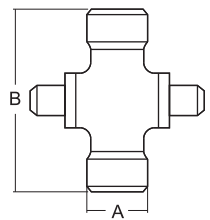
Quick Disconnect
Repair Kit — *13007138



Stock Number	Dim. "A"	Dim. "B"	
		mm	in.
102-8218*	1 1/8" x 6 Spl.	94.0	3.70"
102-8206*	1 3/8" x 6 Spl.	98.0	3.86"
102-8221*	1 3/8" x 21 Spl.	98.0	3.86"

Extended Lubrication Cross & Bearing Kit (E-Kit)

(Recommended 50 hour grease interval)

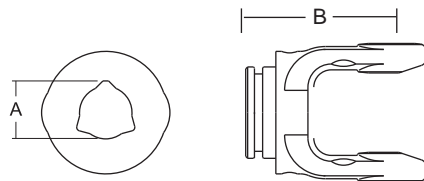


Snap Ring Located In Yoke

Stock Number	Dim. "A"		Dim. "B"	
	mm	in.	mm	in.
201-8261	23.8	.94"	61.2	2.41"

2 Series (cont'd.)

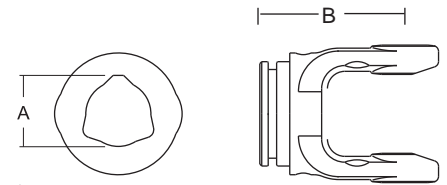
Inner Profile Yoke



With Bearing Groove
(Guard must rotate freely on yoke)

Stock Number	Dim. "A"		Dim. "B"	
	mm	in.	mm	in.
300-6229	29.8	1.17"	75.0	2.95"

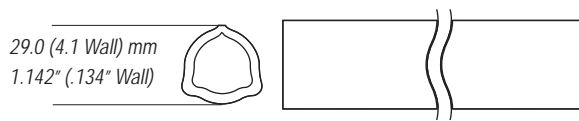
Outer Profile Yoke



With Bearing Groove
(Guard must rotate freely on yoke)

Stock Number	Dim. "A"		Dim. "B"	
	mm	in.	mm	in.
700-6236	36.8	1.45"	75.0	2.95"

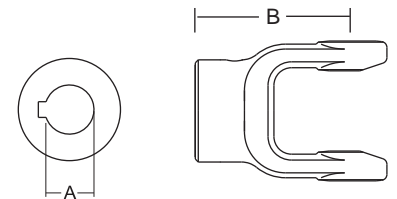
Inner Tube



29.0 (4.1 Wall) mm
1.142" (.134" Wall)

Stock Number	Length	
	m	in.
400-6229	1.5	59.06"
404-6229	1.0	39.37"

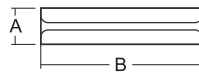
Implement Yoke



Round Bore
With Keyway & Set Screw

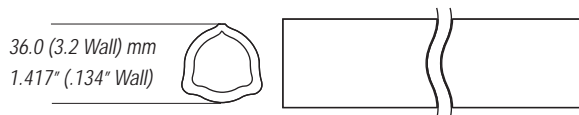
Stock Number	Dim. "A"		Dim. "B"		Standard Keyway	
	mm	in.	mm	in.	mm	in.
800-8225	25.0	.98"	80.0	3.15"	8.0	.31"
800-8208	25.0	1.0"	80.0	3.15"	6.35	.25"
800-8218	28.6	1.13"	80.0	3.15"	6.35	.25"
800-8230	30.0	1.18"	80.0	3.15"	8.0	.31"
800-8210	31.8	1.25"	80.0	3.15"	6.35	.25"
800-8220	31.8	1.25"	80.0	3.15"	8.0	.31"
800-8211	34.9	1.38"	80.0	3.15"	8.0	.31"

Roll Pin



Stock Number	Dim. "A"		Dim. "B"	
	mm	in.	mm	in.
508-0860	8.0	.31"	60.00	2.36"

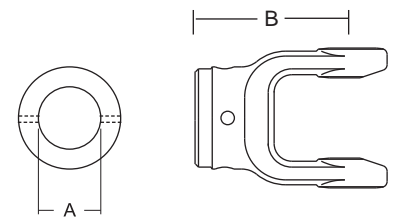
Outer Tube



36.0 (3.2 Wall) mm
1.417" (.134" Wall)

Stock Number	Length	
	m	in.
600-6236	1.5	59.06"
604-6236	1.0	39.37"

Shear Pin Yoke

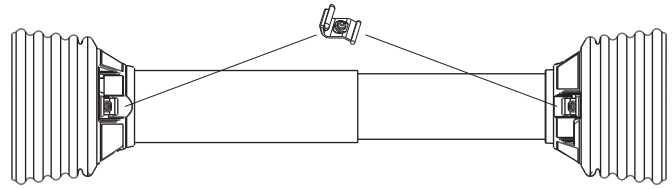


With Pinhole

Stock Number	Dim. "A"		Dim. "B"		Pinhole	
	mm	in.	mm	in.	mm	in.
802-8220	31.8	1.25"	80.0	3.15"	6.35	.25"
802-8222	34.9	1.38"	92.0	3.62"	12.9	.50"

Guard

Order Bearings As Required



Stock Number	Fits Overall Driveline Length	Bearing Kit (2-per kit)
900-2548	48"	961-2502
900-2560	60"	961-2502

Assembly instructions included with guard bearing kit

NOTE: Guards must rotate freely on yokes

Easy Lock™ Replacement Kit

Part Number: 13005000 (4-per Kit)



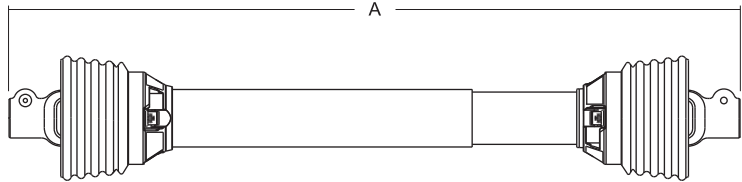
Guard Chain Kit

Insert the "S" hook through the guard loop and crimp shut



Part Number: 13006500 (2-per Kit)

Driveline



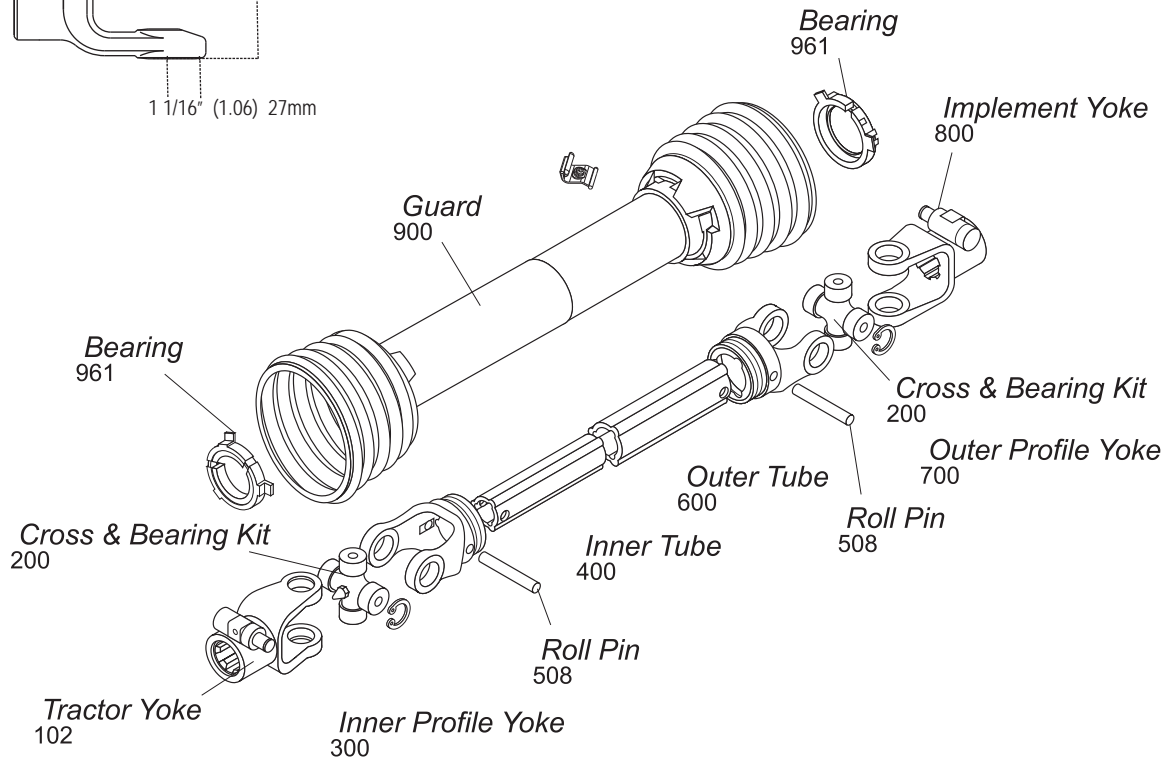
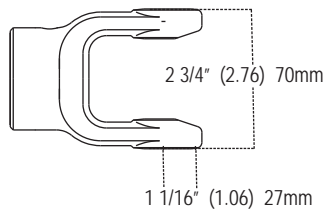
Stock Number	Overall Comp. Length Dim. "A"	Max. Running Length	Tractor Yoke	Implement Yoke
14006247	47"	70"	1 3/8" x 6 Spl. QD	1 3/8" x 6 Spl. QD
14006251	51"	76"	1 3/8" x 6 Spl. QD	1 3/8" Rd w/Pinhole
14006252	52"	79"	1 3/8" x 6 Spl. QD	1 1/4" Rd w/Pinhole
14046248	48"	70"	1 3/8" x 6 Spl. QD	*
14046260	60"	89"	1 3/8" x 6 Spl. QD	*
14106233	33"	58"	1 3/8" x 6 Spl. QD	1 3/8" x 6 Spl. w/Friction Clutch
14206252	52"	77"	1 3/8" x 6 Spl. QD	1 3/8" x 6 Spl. w/Radial Pin Clutch
14406231	31"	41"	1 3/8" x 6 Spl. Safety Side Lock	1" Rd. w/1/4" Key Ball Shear

*Drivelines are furnished without Cross & Bearing Kit and Implement Yoke. Select kit and yoke as required.

Interchanges with Bondioli & Pavesi

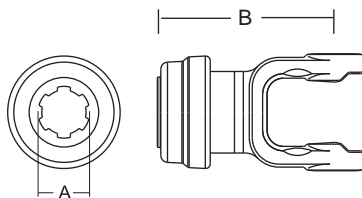
AB3

3 Series



Cross & Bearing Kit and Outboard Yokes interchange with Walterscheid I Series.

Tractor Yoke



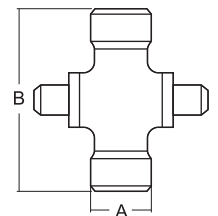
Safety Slide Lock
Repair Kit — *19-15094

Stock Number	Dim. "A"	Dim. "B"	
		mm	in.
101-8306*	1 3/8" x 6 Spl.	120.0	4.72"
101-8321*	1 3/8" x 21 Spl.	120.0	4.72"

Cross & Bearing Kit (R-Kit)

(Recommended 8 hour grease interval)

Snap Ring Located In Yoke

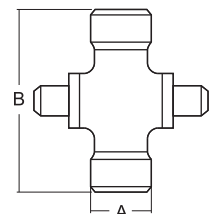


Stock Number	Dim. "A"		Dim. "B"	
	mm	in.	mm	in.
200-8370	27.0	1.06"	70.0	2.76"

Extended Lubrication Cross & Bearing Kit (E-Kit)

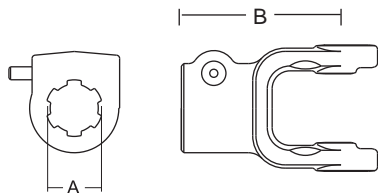
(Recommended 50 hour grease interval)

Snap Ring Located In Yoke



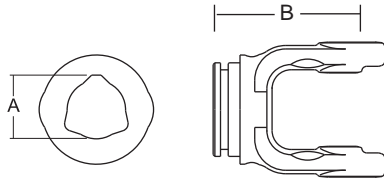
Stock Number	Dim. "A"		Dim. "B"	
	mm	in.	mm	in.
201-8370	27.0	1.06"	70.0	2.76"

Quick Disconnect
Repair Kit — *13007138



Stock Number	Dim. "A"	Dim. "B"	
		mm	in.
102-8306*	1 3/8" x 6 Spl.	102.0	4.02"
102-8321*	1 3/8" x 21 Spl.	102.0	4.02"

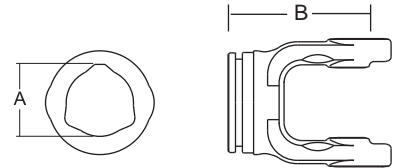
Inner Profile Yoke



With Bearing Groove
(Guard must rotate freely on yoke)

Stock Number	Dim. "A"		Dim. "B"	
	mm	in.	mm	in.
300-6336	36.8	1.45"	80.0	3.15"

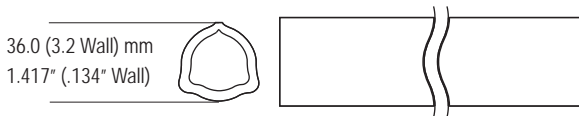
Outer Profile Yoke



With Bearing Groove
(Guard must rotate freely on yoke)

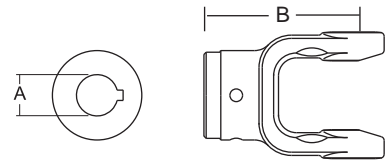
Stock Number	Dim. "A"		Dim. "B"	
	mm	in.	mm	in.
700-6343	44.0	1.73"	80.0	3.15"

Inner Tube



Stock Number	Length	
	m	in.
600-6236	1.5	59.06"
604-6236	1.0	39.37"

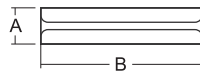
Implement Yoke



Round Bore
With Keyway & Set Screw

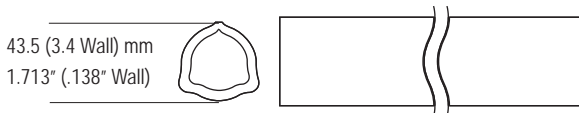
Stock Number	Dim. "A"		Dim. "B"		Standard Keyway	
	mm	in.	mm	in.	mm	in.
800-8310	31.8	1.25"	92.0	3.62"	6.4	.25"
800-8311	34.9	1.38"	92.0	3.62"	8.0	.31"
800-8325	25.0	.98"	92.0	3.62"	8.0	.31"
800-8330	30.0	1.18"	92.0	3.62"	8.0	.31"

Roll Pin



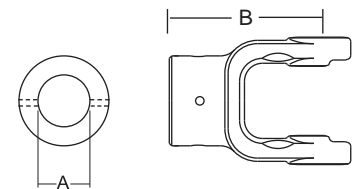
Stock Number	Dim. "A"		Dim. "B"	
	mm	in.	mm	in.
508-0860	8.0	.31"	60.0	2.36"

Outer Tube



Stock Number	Length	
	m	in.
600-6343	1.5	59.06"
604-6343	1.0	39.37"

Shear Pin
With Pin Hole

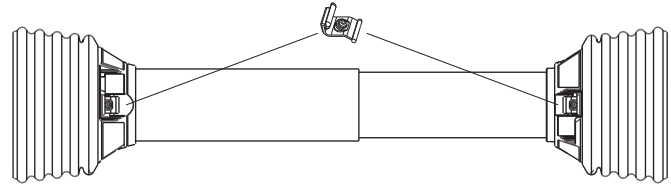


Stock Number	Dim. "A"		Dim. "B"		Pinhole	
	mm	in.	mm	in.	mm	in.
802-8310	31.8	1.25"	92.0	3.62"	6.35	.25"
802-8325	25.0	.98"	92.0	3.62"	8.00	.315"
802-8330	30.0	1.18"	92.0	3.62"	10.00	.394"
802-8335	34.9	1.38"	92.0	3.62"	12.90	.50"

3 Series (cont'd.)

Guard

Order Bearings As Required



Stock

Number	Fits Overall Driveline Length	Bearing Kit (2-per kit)
900-2548	48"	961-2534
900-2560	60"	961-2534

Assembly instructions included with guard bearing kit

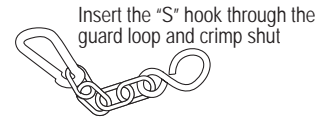
NOTE: Guards must rotate freely on yokes

Easy Lock™ Replacement Kit

Part Number: 13005000 (4-per Kit)

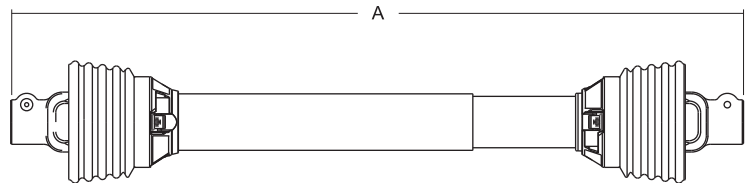


Guard Chain Kit



Part Number: 13006500 (2-per Kit)

Driveline



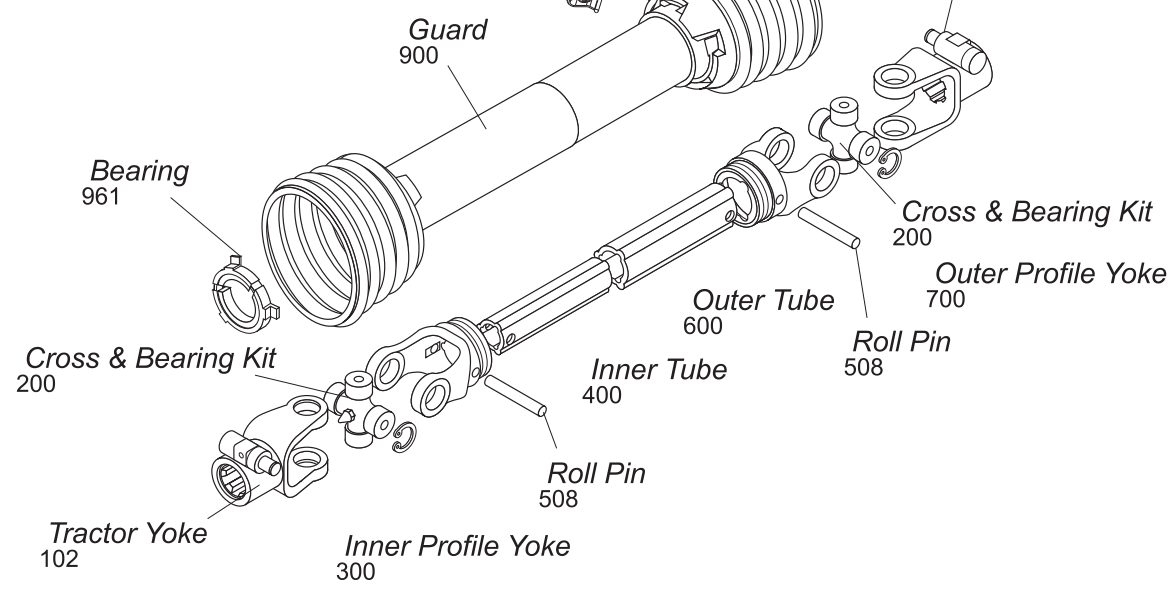
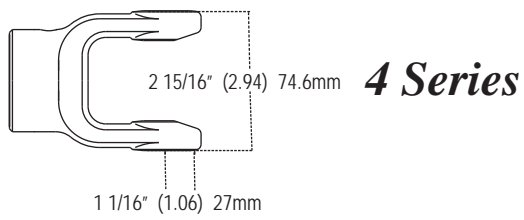
Stock Number	Overall Comp. Length Dim. "A"	Max. Running Length	Tractor Yoke	Implement Yoke
14006340	40"	57"	1 3/8" x 6 Spl. QD	1 3/8" x 6 Spl. QD
**14006340ST	40"	57"	1 3/8" x 6 Spl. SSL	1 3/8" x 6 Spl. SSL
14046348	48"	70"	1 3/8" x 6 Spl. QD	*
14046360	60"	90"	1 3/8" x 6 Spl. QD	*

* Drivelines are furnished without Cross & Bearing Kit and Implement Yoke. Select kit and yoke as required.

** Please see pages 22-23 for Standard driveline product details.

Interchanges with Bondioli & Pavesi

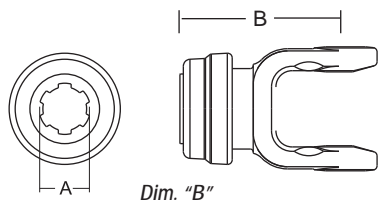
AB4



Cross & Bearing Kit and Outboard Yokes interchange with Walterscheid 2300 Series

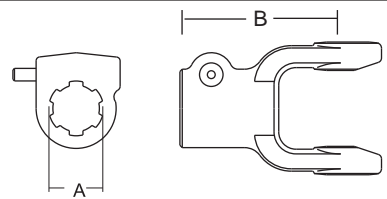
Tractor Yoke

Safety Slide Lock
Repair Kit — *19-15094



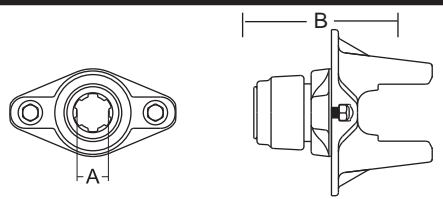
Stock Number	Dim. "A"	Dim. "B"	
		mm	in.
101-8406*	1 3/8" x 6 Spl.	113.0	4.45"
101-8421*	1 3/8" x 21 Spl.	113.0	4.45"

Quick Disconnect
Repair Kit — *13007138



Stock Number	Dim. "A"	Dim. "B"	
		mm	in.
102-8406*	1 3/8" x 6 Spl.	107.0	4.21"
102-8418*	1 1/8" x Hex	107.0	4.21"
102-8421*	1 3/8" x 21 Spl.	107.0	4.21"

Ball Shear
Repair Kit —
*13004000
**13004020



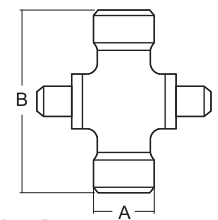
Stock Number	Dim. "A" Bore	Dim. "B"		Shear Bolt
		mm	in.	
104-8406*	1 3/8" x 6 Spl.	141.0	5.54"	3/8" - 16 Gr. 5
104-8420**	1 3/4" x 20 Spl.	154.0	6.06"	3/8" - 16 Gr. 5
104-8421*	1 3/8" x 21 Spl.	141.0	5.54"	3/8" - 16 Gr. 5

Replacement Shear Bolt Part No. 11-10445

Cross & Bearing Kit (R-Kit)

(Recommended 8 hour grease interval)

Snap Ring Located In Yoke

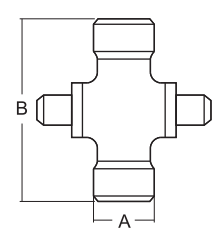


Stock Number	Dim. "A"		Dim. "B"	
	mm	in.	mm	in.
200-8474	27.0	1.06"	74.6	2.94"

Extended Lubrication Cross & Bearing Kit (E-Kit)

(Recommended 50 hour grease interval)

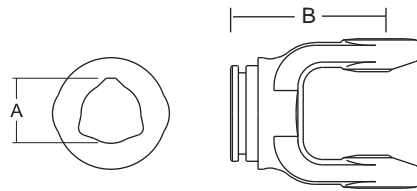
Snap Ring Located In Yoke



Stock Number	Dim. "A"		Dim. "B"	
	mm	in.	mm	in.
201-8474	27.0	1.06"	74.6	2.94"

4 Series (cont'd.)

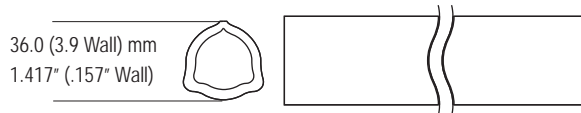
Inner Profile Yoke



With Bearing Groove
(Guard must rotate freely on yoke)

Stock Number	Dim. "A"		Dim. "B"	
	mm	in.	mm	in.
300-6436	36.8	1.45"	85.0	3.35"

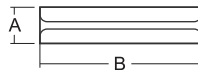
Inner Tube



36.0 (3.9 Wall) mm
1.417" (.157" Wall)

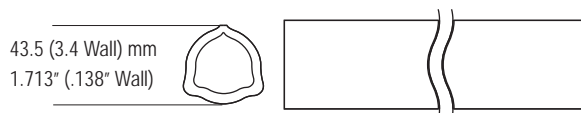
Stock Number	Length	
	m	in.
400-6436	1.5	59.06"
404-6436	1.0	39.37"

Roll Pin



Stock Number	Dim. "A"		Dim. "B"	
	mm	in.	mm	in.
508-0860	8.0	.31"	60.0	2.36"

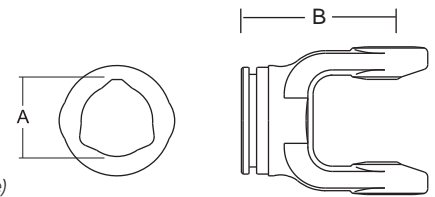
Outer Tube



43.5 (3.4 Wall) mm
1.713" (.138" Wall)

Stock Number	Length	
	m	in.
600-6343	1.5	59.06"
604-6343	1.0	39.37"

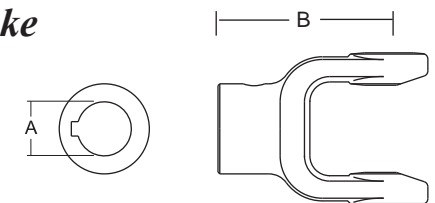
Outer Profile Yoke



With Bearing Groove
(Guard must rotate freely on yoke)

Stock Number	Dim. "A"		Dim. "B"	
	mm	in.	mm	in.
700-6443	44.0	1.73"	85.0	3.35"

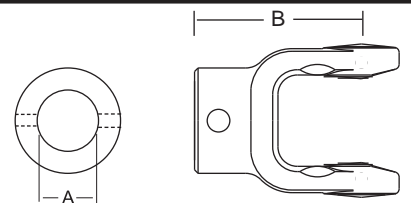
Implement Yoke



Round Bore
With Keyway & Set Screw

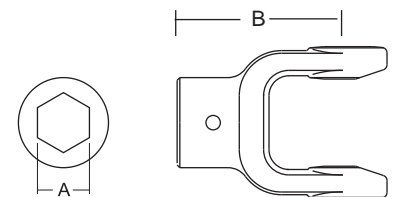
Stock Number	Dim. "A"		Dim. "B"		Standard Keyway	
	mm	in.	mm	in.	mm	in.
800-8430	30.0	1.18"	95.0	3.74"	8.0	.31"
800-8410	31.8	1.25"	95.0	3.74"	6.4	.25"
800-8411	34.9	1.38"	95.0	3.74"	8.0	.31"
800-8424	38.1	1.50"	95.0	3.74"	9.5	.38"
800-8435	35.0	1.38"	95.0	3.74"	10.0	.39"

Shear Pin
With Pin Hole



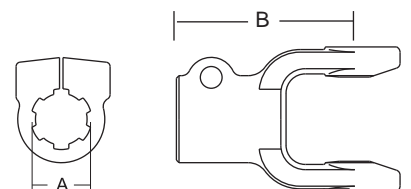
Stock Number	Dim. "A"		Dim. "B"		Pinhole	
	mm	in.	mm	in.	mm	in.
802-8410	31.8	1.25"	95.0	3.74"	6.35	.25"
802-8435	35.0	1.38"	95.0	3.74"	12.9	.50"

Hex Bore



Stock Number	Dim. "A"		Dim. "B"	
	mm	in.	mm	in.
805-8418	28.9	1.14"	95.0	3.74"

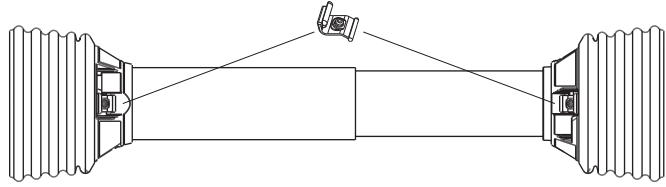
Clamp Yoke



Stock Number	Dim. "A"		Dim. "B"	
	mm	in.	mm	in.
807-8406	1 3/8" x 6 Spl.		107.0	4.21"
807-8420	1 1/4" Rd.		107.0	4.21"

Guard

Order Bearings As Required

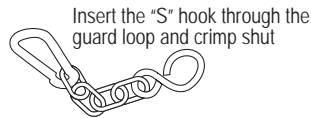


Stock Number	Fits Overall Driveline Length	Bearing Kit (2-per kit)
900-2548	48"	961-2534
900-2560	60"	961-2534

Assembly instructions included with guard bearing kit

NOTE: Guards must rotate freely on yokes

Guard Chain Kit



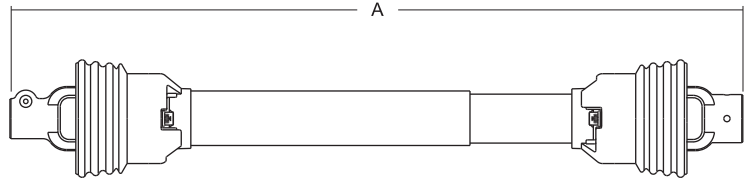
Part Number: 13006500 (2-per Kit)

Easy Lock™ Replacement Kit

Part Number: 13005000 (4-per Kit)



Driveline

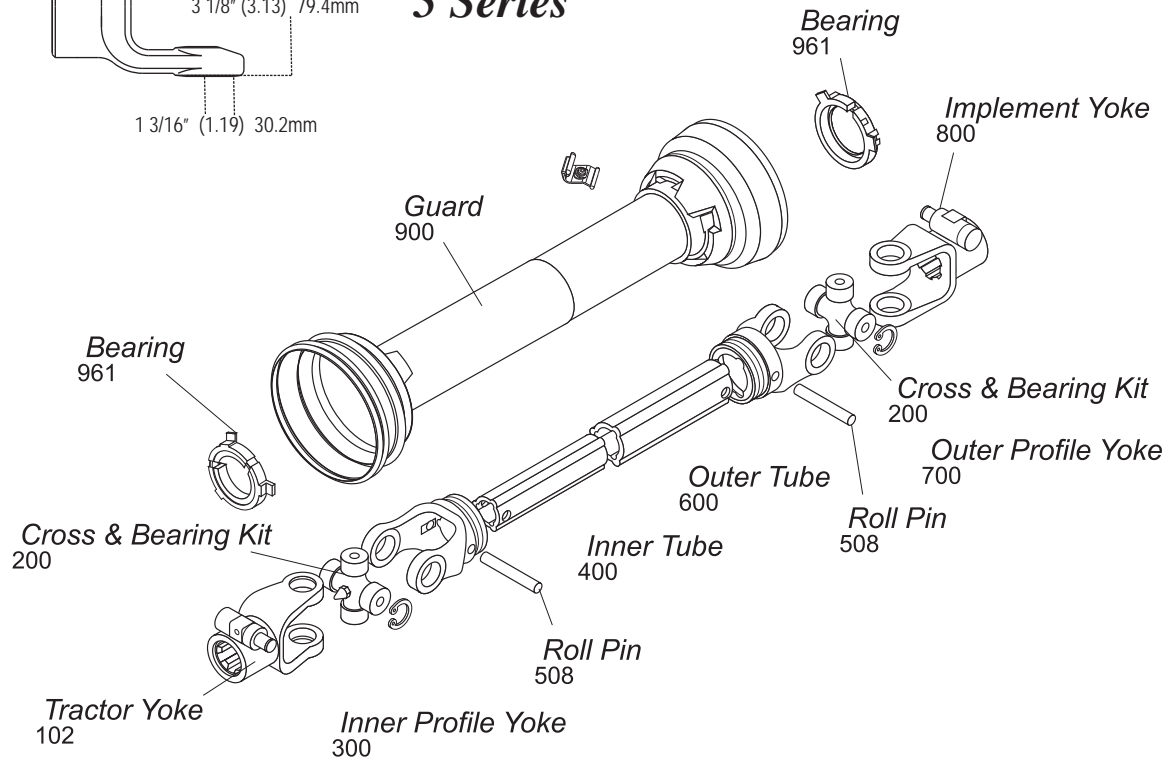
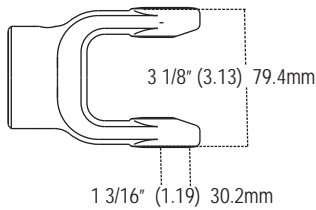


Stock Number	Overall Comp. Length Dim. "A"	Max. Running Length	Tractor Yoke	Implement Yoke
14006424	48"	70"	1 3/8" x 6 Spl. QD	1 1/2" Rd. w/3/8" Keyway
14006430	30"	40"	1 3/8" x 6 Spl. QD	1 3/8" Rd. w/Pinhole
**14006430ST	30"	40"	1 3/8" x 6 Spl. SSL	1 3/8" Rd. w/Pinhole
14006432	32"	43"	1 3/8" x 6 Spl. QD	1 3/8" Rd. w/Pinhole
**14006432ST	32"	43"	1 3/8" x 6 Spl. SSL	1 3/8" Rd. w/Pinhole
14006436	36"	50"	1 3/8" x 6 Spl. QD	1 3/8" Rd. w/Pinhole
14006437	37"	50"	1 3/8" x 6 Spl. QD	1 3/8" Rd. w/Pinhole
**14006437ST	37"	50"	1 3/8" x 6 Spl. SSL	1 3/8" Rd. w/Pinhole
14006438	38"	53"	1 3/8" x 6 Spl. QD	1 3/8" x 6 Spl. QD
14006442	42"	60"	1 3/8" x 6 Spl. QD	1 3/8" Rd. w/Pinhole
**14006442ST	42"	60"	1 3/8" x 6 Spl. SSL	1 3/8" Rd. w/Pinhole
14006444	52"	77"	1 3/8" x 6 Spl. QD	1 3/8" x 6 Spl. QD
14006446	46"	67"	1 3/8" x 6 Spl. QD	1 3/8" x 6 Spl. QD
14006448	48"	70"	1 3/8" x 6 Spl. QD	1 3/8" x 6 Spl. QD
**14006448ST	48"	70"	1 3/8" x 6 Spl. SSL	1 3/8" x 6 Spl. SSL
14006451	51"	76"	1 3/8" x 6 Spl. QD	1 3/8" Rd. w/Pinhole
14006453	53"	79"	1 3/8" x 6 Spl. QD	1 1/4" Rd. w/Pinhole
**14006453ST	53"	79"	1 3/8" x 6 Spl. SSL	1 1/4" Rd. w/Pinhole
14006455	55"	83"	1 3/8" x 6 Spl. QD	1 3/8" x 6 Spl. QD
14046448	48"	70"	1 3/8" x 6 Spl. QD	*
14046460	60"	89"	1 3/8" x 6 Spl. QD	*
14106436	36"	48"	1 3/8" x 6 Spl. QD	1 3/8" x 6 Spl. w/Friction Clutch
**14106436ST	36"	48"	1 3/8" x 6 Spl. SSL	1 3/8" x 6 Spl. w/Friction Clutch
14106438	38"	52"	1 3/8" x 6 Spl. QD	1 3/8" x 6 Spl. w/Friction Clutch
14206454	54"	79"	1 3/8" x 6 Spl. QD	1 3/8" x 6 Spl. w/Radial Pin Clutch
14406428	28"	35"	1 3/8" x 6 Spl. Safety Slide Lock	1 1/4" Rd. w/1/4" Keyway Ball Shear

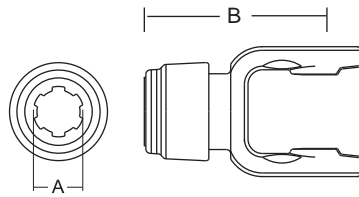
* Drivelines are furnished without Cross & Bearing Kit and Implement Yoke. Select kit and yoke as required.

** Please see pages 22-23 for Standard driveline product details.

5 Series



Tractor Yoke



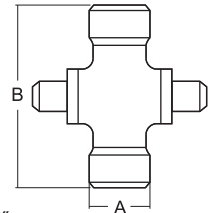
Safety Slide Lock
Repair Kit — *13004000

Stock Number	Dim. "A"	Dim. "B"	
		mm	in.
101-6506*	1 3/8" x 6 Spl.	126.0	4.96"
101-6521*	1 3/8" x 21 Spl.	126.0	4.96"

Cross & Bearing Kit (R-Kit)

(Recommended 8 hour grease interval)

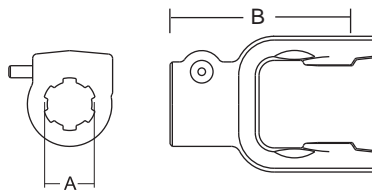
Snap Ring Located In Yoke



Stock Number	Dim. "A"		Dim. "B"	
	mm	in.	mm	in.
200-6580	30.2	1.19"	79.4	3.13"

Quick Disconnect

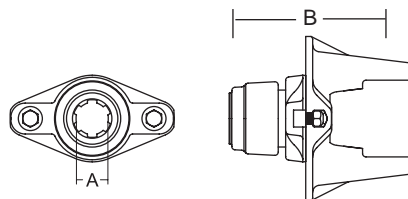
Repair Kit —
*13007138
**13007120



Stock Number	Dim. "A" Bore	Dim. "B"	
		mm	in.
102-6506*	1 3/8" x 6 Spl.	113.0	4.45"
102-6520**	1 3/4" x 20 Spl.	116.0	4.57"
102-6521*	1 3/8" x 21 Spl.	113.0	4.45"

Ball Shear

Repair Kit —
*13004000
**13004020

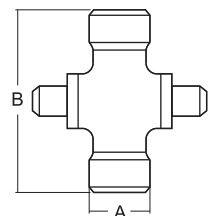


Stock Number	Dim. "A" Bore	Dim. "B"		Shear Bolt
		mm	in.	
104-6506*	1 3/8" x 6 Spl.	141.0	5.54"	3/8" - 16 Gr. 5
104-6520**	1 3/4" x 20 Spl.	154.0	6.06"	3/8" - 16 Gr. 5
104-6521*	1 3/8" x 21 Spl.	141.0	5.54"	3/8" - 16 Gr. 5

Extended Lubrication Cross & Bearing Kit (E-Kit)

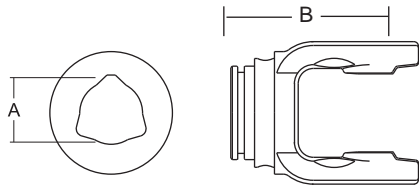
(Recommended 50 hour grease interval)

Snap Ring Located In Yoke



Stock Number	Dim. "A"		Dim. "B"	
	mm	in.	mm	in.
201-6580	30.2	1.19"	79.4	3.13"

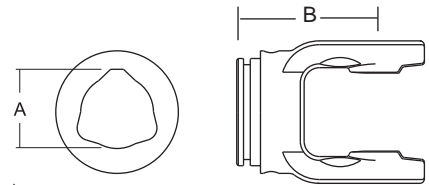
Inner Profile Yoke



With Bearing Groove
(Guard must rotate freely on yoke)

Stock Number	Dim. "A"		Dim. "B"	
	mm	in.	mm	in.
300-6545	45.2	1.78"	98.0	3.86"

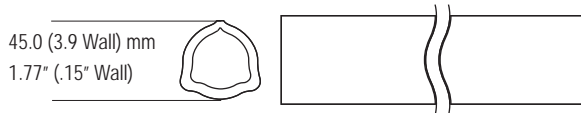
Outer Profile Yoke



With Bearing Groove
(Guard must rotate freely on yoke)

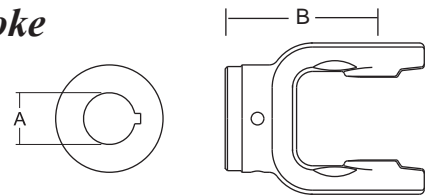
Stock Number	Dim. "A"		Dim. "B"	
	mm	in.	mm	in.
700-6552	51.7	2.04"	98.0	3.86"

Inner Tube



Stock Number	Length	
	m	in.
400-6545	1.5	59.06"
404-6545	1.0	39.37"

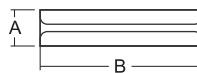
Implement Yoke



Round Bore
With Keyway & Set Screw

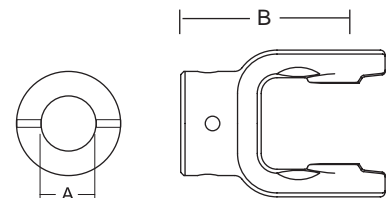
Stock Number	Dim. "A"		Dim. "B"		Standard Keyway	
	mm	in.	mm	in.	mm	in.
800-6510	31.8	1.25"	98.0	3.86"	6.4	.25"
800-6511	34.9	1.38"	98.0	3.86"	8.0	.31"
800-6524	38.1	1.50"	98.0	3.86"	9.5	.38"
800-6535	35.0	1.378"	98.0	3.86"	10.0	.39"

Roll Pin



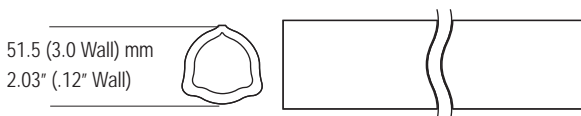
Stock Number	Dim. "A"		Dim. "B"	
	mm	in.	mm	in.
508-1075	10.0	.394"	75.0	2.95"

Shear Pin
With Pin Hole



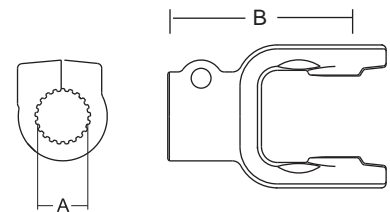
Stock Number	Dim. "A"		Dim. "B"		Pinhole	
	mm	in.	mm	in.	mm	in.
802-6535	34.9	1.38"	105.0	4.13"	12.9	.50"

Outer Tube



Stock Number	Length	
	m	in.
600-6552	1.5	59.06"
604-6552	1.0	39.37"

Clamp Yoke

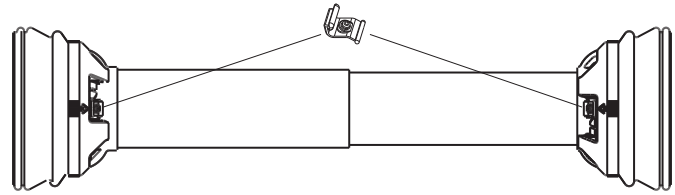


Stock Number	Dim. "A"		Dim. "B"	
	mm	in.	mm	in.
807-6521	35.0	1.38" x 21 Spl.	113.0	4.45"

5 Series (cont'd.)

Guard

Order Bearings As Required



Stock Number	Fits Overall Driveline Length	Bearing Kit (2-per kit)
902-3548	48"	961-3505
902-3560	60"	961-3505

Assembly instructions included with guard bearing kit

NOTE: Guards must rotate freely on yokes

Easy Lock™ Replacement Kit

Part Number: 13005000 (4-per Kit)



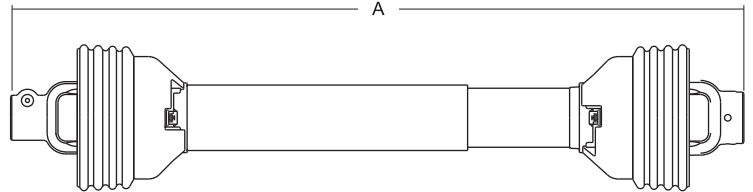
Guard Chain Kit

Insert the "S" hook through the guard loop and crimp shut



Part Number: 13006500 (2-per Kit)

Driveline



Stock Number	Overall Comp. Length Dim. "A"	Max. Running Length	Tractor Yoke	Implement Yoke
14006524	48"	70"	1 3/8" x 6 Spl. QD	1 1/2" Rd. w/3/8" Keyway
14006542	42"	60"	1 3/8" x 6 Spl. QD	1 3/8" Rd. w/Pinhole
**14006542ST	42"	60"	1 3/8" x 6 Spl. SSL	1 3/8" Rd. w/Pinhole
14006543	43"	60"	1 3/8" x 6 Spl. QD	1 3/8" x 6 Spl. QD
14006546	46"	67"	1 3/8" x 6 Spl. QD	1 3/8" x 6 Spl. QD
**14006546ST	46"	67"	1 3/8" x 6 Spl. SSL	1 3/8" x 6 Spl. SSL
14006551	51"	76"	1 3/8" x 6 Spl. QD	1 3/8" Rd. w/Pinhole
14006555	55"	83"	1 3/8" x 6 Spl. QD	1 3/8" x 6 Spl. QD
14016524	48"	70"	1 3/8" x 21 Spl. QD	1 1/2" Rd. w/3/8" Keyway
14016536	36"	50"	1 3/8" x 6 Spl. QD	1 3/8" x 6 Spl. QD
14016542	42"	60"	1 3/8" x 6 Spl. QD	1 3/8" x 6 Spl. QD
14046548	48"	70"	1 3/8" x 6 Spl. QD	*
14046560	60"	89"	1 3/8" x 6 Spl. QD	*
14106546	46"	65"	1 3/8" x 6 Spl. QD	1 3/8" X 6 Spl. w/Friction Clutch
14306538	38"	55"	1 3/8" x 6 Spl. QD	1 3/8" x 6 Spl. w/Overrunning Clutch

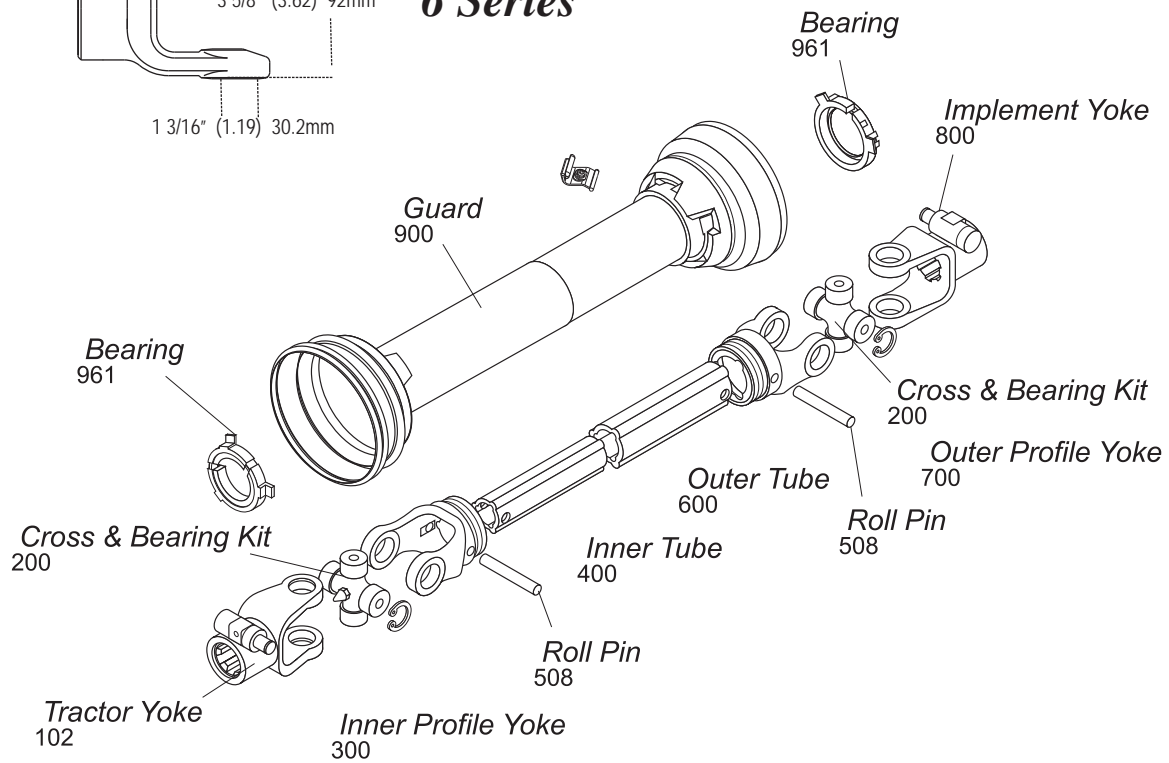
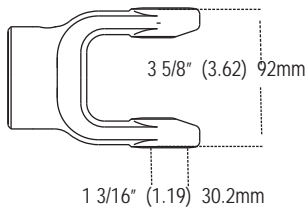
* Drivelines are furnished without Cross & Bearing Kit and Implement Yoke. Select kit and yoke as required.

** Please see pages 22-23 for Standard driveline product details.

Interchanges with Bondioli & Pavesi

AB6

6 Series

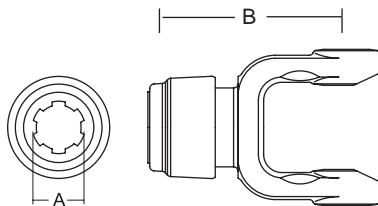


Cross & Bearing Kit and Outboard Yokes interchange with Walterscheid 220 Series

Tractor Yoke

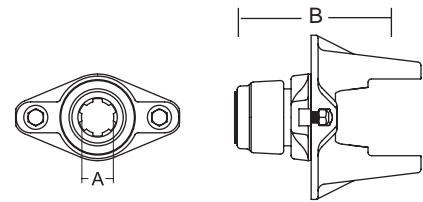
Safety Slide Lock

Repair Kit —
*13004000
**13004020



Ball Shear

Repair Kit —
*13004000
**13004020



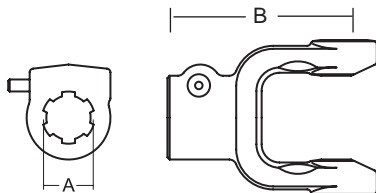
Stock Number	Dim. "A" Bore	Dim. "B" mm in.
101-8606*	1 3/8" x 6 Spl.	132.0 5.20"
101-8620**	1 3/4" x 20 Spl.	135.0 5.32"
101-8621*	1 3/8" x 21 Spl.	132.0 5.20"

Stock Number	Dim. "A" Bore	Dim. "B" mm in.	Shear Bolt
104-8606*	1 3/8" x 6 Spl.	149.0 5.85"	3/8" - 16 Gr. 5
104-8620**	1 3/4" x 20 Spl.	162.0 6.37"	3/8" - 16 Gr. 5
104-8621*	1 3/8" x 21 Spl.	149.0 5.85"	3/8" - 16 Gr. 5

Replacement Shear Bolt Part No. 11-10445

Quick Disconnect

Repair Kit —
*13007138
**13007120



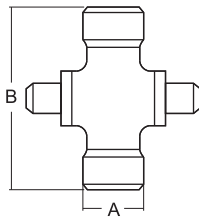
Stock Number	Dim. "A" Bore	Dim. "B" mm in.
102-8606*	1 3/8" x 6 Spl.	118.0 4.65"
102-8618*	1 1/8" Hex	117.0 4.61"
102-8620**	1 3/4" x 20 Spl.	120.0 4.72"
102-8621*	1 3/8" x 21 Spl.	118.0 4.65"

6 Series (cont'd.)

Cross & Bearing Kit (R-Kit)

(Recommended 8 hour grease interval)

Snap Ring Located In Yoke

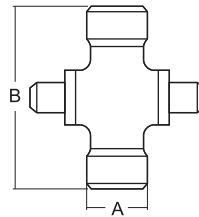


Stock Number	Dim. "A"		Dim. "B"	
	mm	in.	mm	in.
200-8692	30.2	1.19"	92.0	3.62"

Extended Lubrication Cross & Bearing Kit (E-Kit)

(Recommended 50 hour grease interval)

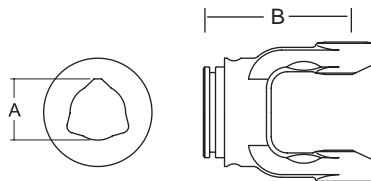
Snap Ring Located In Yoke



Stock Number	Dim. "A"		Dim. "B"	
	mm	in.	mm	in.
201-8692	30.2	1.19"	92.0	3.62"

Inner Profile Yoke

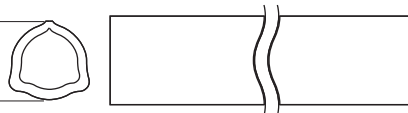
With Bearing Groove
(Guard must rotate freely on yoke)



Stock Number	Dim. "A"		Dim. "B"	
	mm	in.	mm	in.
300-6645	45.2	1.78"	105.0	4.13"

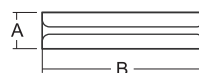
Inner Tube

45.0 (3.9 Wall) mm
1.77" (.154" Wall)



Stock Number	Length	
	m	in.
400-6545	1.5	59 1/16" (59.06)
404-6545	1.0	39 3/8" (39.37)

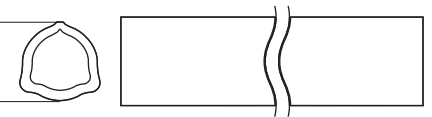
Roll Pin



Stock Number	Dim. "A"		Dim. "B"	
	mm	in.	mm	in.
508-1080	10.0	.39"	80.0	3.15"

Outer Tube

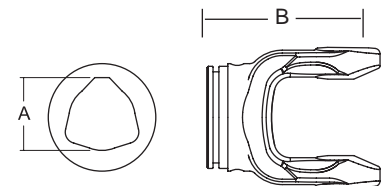
54.0 (4.5 Wall) mm
2.13" (.18" Wall)



Stock Number	Length	
	m	in.
600-6654	1.5	59 1/16" (59.06)
604-6654	1.0	39 3/8" (39.37)

Outer Profile Yoke

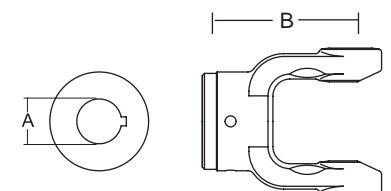
With Bearing Groove
(Guard must rotate freely on yoke)



Stock Number	Dim. "A"		Dim. "B"	
	mm	in.	mm	in.
700-6654	54.2	2.13"	105.0	4.13"

Implement Yoke

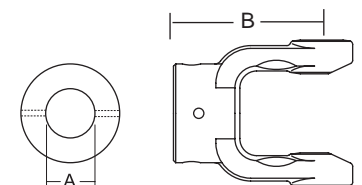
Round Bore
With Keyway & Set Screw



Stock Number	Dim. "A"		Dim. "B"		Standard Keyway	
	mm	in.	mm	in.	mm	in.
800-8610	31.8	1.25"	105.0	4.13"	6.4	.25"
800-8611	35.0	1.38"	105.0	4.13"	13.0	.31"
800-8624	38.1	1.50"	105.0	4.13"	9.5	.38"
800-8628	44.5	1.75"	108.0	4.25"	9.5	.38"
800-8635	35.0	1.38"	108.0	4.25"	10.0	.39"
800-8640	40.0	1.57"	108.0	4.25"	12.0	.47"

Shear Pin

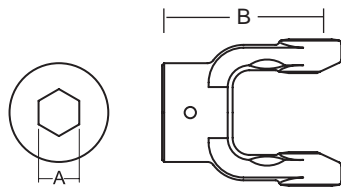
With Pin Hole



Stock Number	Dim. "A"		Dim. "B"		Pinhole	
	mm	in.	mm	in.	mm	in.
802-8611	34.9	1.38"	105.0	4.13"	12.9	.50"
802-8620	31.8	1.25"	105.0	4.13"	6.5	.25"

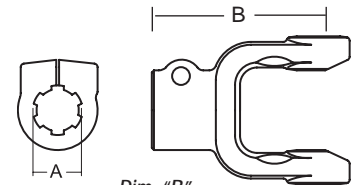
Implement Yoke - continued

Hex Bore



Stock Number	Dim. "A"		Dim. "B"	
	mm	in.	mm	in.
805-8618	28.9	1.14" Hex	105.0	4.13"

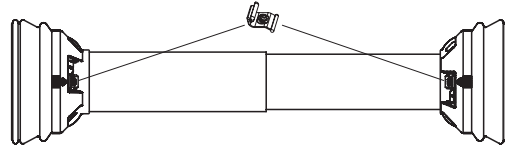
Clamp Yoke



Stock Number	Dim. "A"		Dim. "B"	
			mm	in.
807-8606	1 3/8" x 6 Spl.		117.0	4.61"
807-8620	1 3/4" x 20 Spl.		120.0	4.72"
807-8621	1 3/8" x 21 Spl.		117.0	4.61"

Guard

Order Bearings As Required

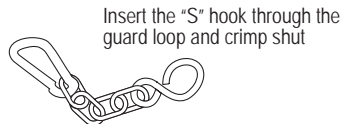


Stock Number	Fits Overall Driveline Length	Bearing Kit (2-per kit)
902-3548	48"	961-3567
902-3560	60"	961-3567

Assembly instructions included with guard bearing kit
Note: Guards must rotate freely on yokes

Guard Chain Kit

Part Number: 13006500 (2-per Kit)



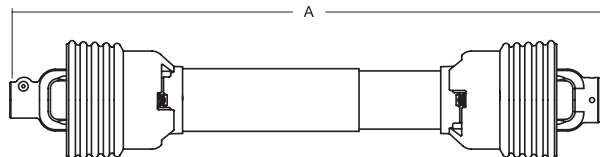
Insert the "S" hook through the guard loop and crimp shut

Easy Lock™ Replacement Kit

Part Number: 13005000 (4-per Kit)



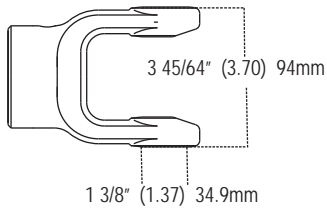
Driveline



Stock Number	Overall Comp. Length Dim. "A"	Max. Running Length	Tractor Yoke	Implement Yoke
14006624	48"	70"	1 3/8" x 6 Spl. QD	1 1/2" Rd. w/3/8" Keyway
14006628	57"	83"	1 3/8" x 6 Spl. QD	1 3/4" Rd. w/3/8" Keyway
14006637	37"	50"	1 3/8" x 6 Spl. QD	1 3/8" x 6 Spl. QD
14006642	42"	57"	1 3/8" x 6 Spl. QD	1 3/8" x 6 Spl. QD
14006644	44"	60"	1 3/8" x 6 Spl. QD	1 3/8" x 6 Spl. QD
14006652	52"	76"	1 3/8" x 6 Spl. QD	1 3/8" Rd. w/Pinhole
14006655	55"	76"	1 3/8" x 6 Spl. QD	1 3/8" x 6 Spl. QD
14006657	57"	83"	1 3/8" x 6 Spl. QD	1 3/8" x 6 Spl. QD
**14006657ST	57"	83"	1 3/8" x 6 Spl. SSL	1 3/8" x 6 Spl. SSL
14016624	48"	70"	1 3/8" x 21 Spl. QD	1 1/2" Rd. w/3/8" Keyway
14016666	66"	99"	1 3/8" x 21 Spl. QD	1 3/8" Rd. w/5/16" Keyway
14046648	48"	70"	1 3/8" x 6 Spl. QD	*
14046660	60"	89"	1 3/8" x 6 Spl. QD	*
14066644	44"	60"	1 3/8" x 21 Spl. QD	1 3/8" x 21 Spl. QD
14106654	54"	78"	1 3/8" x 6 Spl. QD	1 3/8" x 6 Spl. Clamp w/Friction Clutch
14106656	56"	80"	1 3/4" x 20 Spl. Clamp	1 3/4" x 20 Spl. Clamp w/Friction Clutch
14106660	60"	89"	1 3/8" x 6 Spl. QD	1 3/4" x 20 Spl. Clamp w/Friction Clutch
14106661	61"	92"	1 3/4" x 20 Spl. QD	1 3/4" x 20 Spl. Clamp w/Friction Clutch
14106664	64"	94"	1 3/4" x 20 Spl. Clamp	1 3/4" x 20 Spl. Clamp w/Friction Clutch
14116664	64"	94"	1 3/8" x 21 Spl. Clamp	1 3/8" x 21 Spl. Clamp w/Friction Clutch
14126654	57"	82"	1 3/8" x 6 Spl. QD	1 3/4" x 20 Spl. Clamp w/Friction Clutch
14126664	64"	94"	1 3/4" x 20 Spl. Clamp	1 3/8" x 6 Spl. Clamp w/Friction Clutch
14306639	39"	52"	1 3/8" x 6 Spl. QD	1 3/8" x 6 Spl. w/Overrunning Clutch
14406632	32"	41"	1 3/8" x 6 Spl. Safety Slide Lock	1 1/2" Rd. w/3/8" Keyway Ball Shear
14406639	39"	52"	1 3/8" x 6 Spl. Safety Slide Lock	1 3/8" x 6 Spl. Clamp Ball Shear

*Drivelines are furnished without Cross & Bearing Kit and Implement Yoke. Select kit and yoke as required.

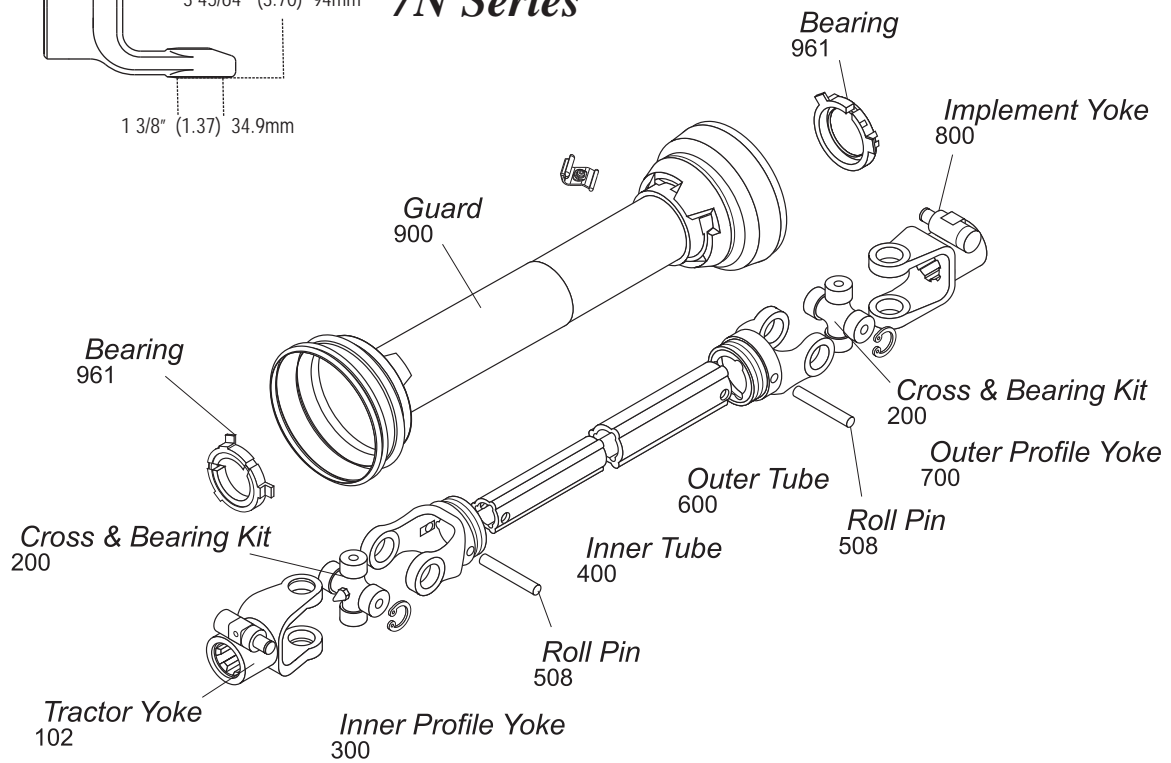
** Please see pages 22-23 for Standard driveline product details.



7N Series

Interchanges with Bondioli & Pavesi

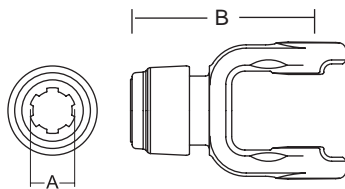
AB7N



Tractor Yoke

Safety Slide Lock

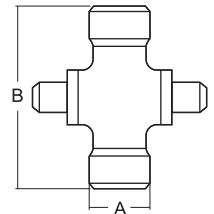
Repair Kit —
*13004000
**13004020



Stock Number	Dim. "A"	Dim. "B"	
	Bore	mm	in.
101-6706*	1 3/8" x 6 Spl.	138.0	5.43"
101-6720**	1 3/4" x 20 Spl.	141.0	5.55"
101-6721*	1 3/8" x 21 Spl.	138.0	5.43"

Cross & Bearing Kit (R-Kit)

(Recommended 8 hour grease interval)

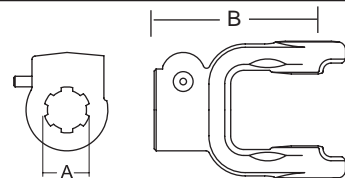


Snap Ring Located In Yoke

Stock Number	Dim. "A"		Dim. "B"	
	mm	in.	mm	in.
200-6794	34.9	1.37"	94.0	3.70"

Quick Disconnect

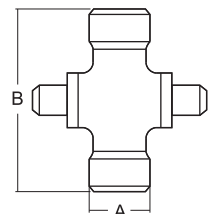
Repair Kit —
*13007138
**13007120



Stock Number	Dim. "A"	Dim. "B"	
	Bore	mm	in.
102-6706*	1 3/8" x 6 Spl.	119.0	4.69"
102-6720**	1 3/4" x 20 Spl.	121.0	4.76"
102-6721*	1 3/8" x 21 Spl.	119.0	4.69"
102-6728**	1 3/4" x 6 Spl.	121.0	4.76"

Extended Lubrication Cross & Bearing Kit (E-Kit)

(Recommended 50 hour grease interval)

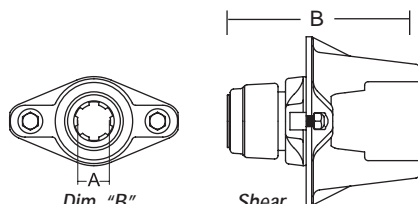


Snap Ring Located In Yoke

Stock Number	Dim. "A"		Dim. "B"	
	mm	in.	mm	in.
201-6794	34.9	1.37"	94.0	3.70"

Ball Shear

Repair Kit —
*13004000



Stock Number	Dim. "A"	Dim. "B"		Shear Bolt
	Bore	mm	in.	
104-6706*	1 3/8" x 6 Spl.	149.0	5.85"	3/8" - 16 Gr. 5
104-6721*	1 3/8" x 21 Spl.	149.0	5.85"	3/8" - 16 Gr. 5

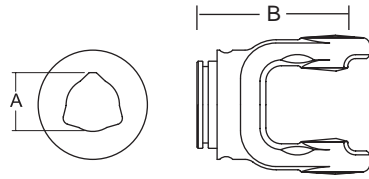
AB7*

Stock Number	Dim. "A"		Dim. "B"	
	mm	in.	mm	in.
200-8706	30.2	1.19"	106.5	4.19"
201-8706	30.2	1.19"	106.5	4.19"

*Old Bondioli & Pavesi 7 Series is interchangeable with Walterscheid 230 Series. Original part identification begins with 23.

Replacement Shear Bolt Part No. 11-10445

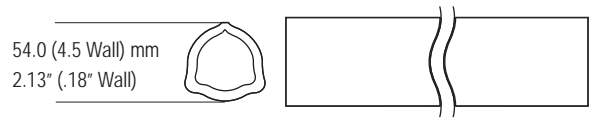
Inner Profile Yoke



With Bearing Groove
(Guard must rotate freely on yoke)

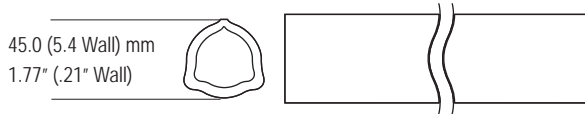
Stock Number	Dim. "A"		Dim. "B"	
	mm	in.	mm	in.
300-6745	45.2	1.78"	107.0	4.21"

Outer Tube



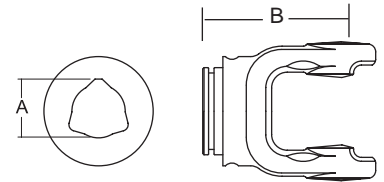
Stock Number	Length	
	m	in.
600-6654	1.5	59.06"
604-6654	1.0	39.37"

Inner Tube



Stock Number	Length	
	m	in.
400-6745	1.5	59.06"
404-6745	1.0	39.37"

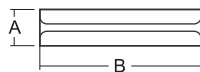
Outer Profile Yoke



With Bearing Groove
(Guard must rotate freely on yoke)

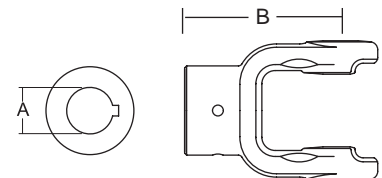
Stock Number	Dim. "A"		Dim. "B"	
	mm	in.	mm	in.
700-6754	54.2	2.13"	107.0	4.21"

Roll Pin



Stock Number	Dim. "A"		Dim. "B"	
	mm	in.	mm	in.
508-1080	10.0	.39"	80.0	3.15"

Implement Yoke



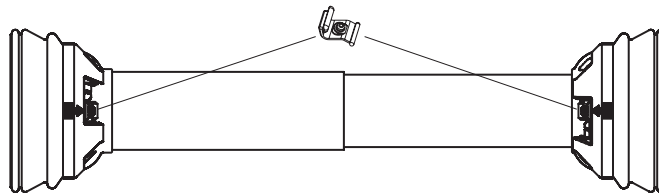
Round Bore
With Keyway & Set Screw

Stock Number	Dim. "A"		Dim. "B"		Standard keyway	
	mm	in.	mm	in.	mm	in.
800-6722	35.0	1.38"	119.0	4.69"	8.0	.31"
800-6728	44.5	1.75"	119.0	4.69"	9.5	.38"
800-6740	40.0	1.57"	119.0	4.69"	12.7	.50"

7N Series (cont'd.)

Guard

Order Bearings As Required



Stock Number	Fits Overall Driveline Length	Bearing Kit (2-per kit)
902-3548	48"	961-3567
902-3560	60"	961-3567

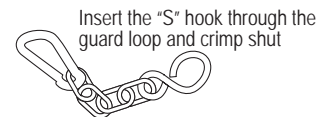
Assembly instructions included with guard bearing kit
NOTE: Guards must rotate freely on yokes

Easy Lock™ Replacement Kit

Part Number: 13005000 (4-per Kit)

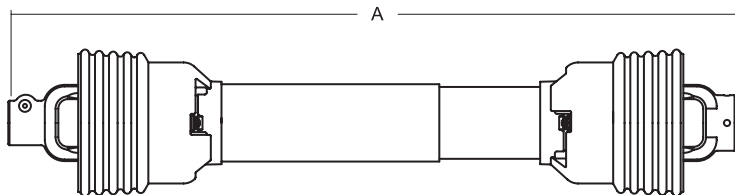


Guard Chain Kit



Part Number: 13006500 (2-per Kit)

Driveline



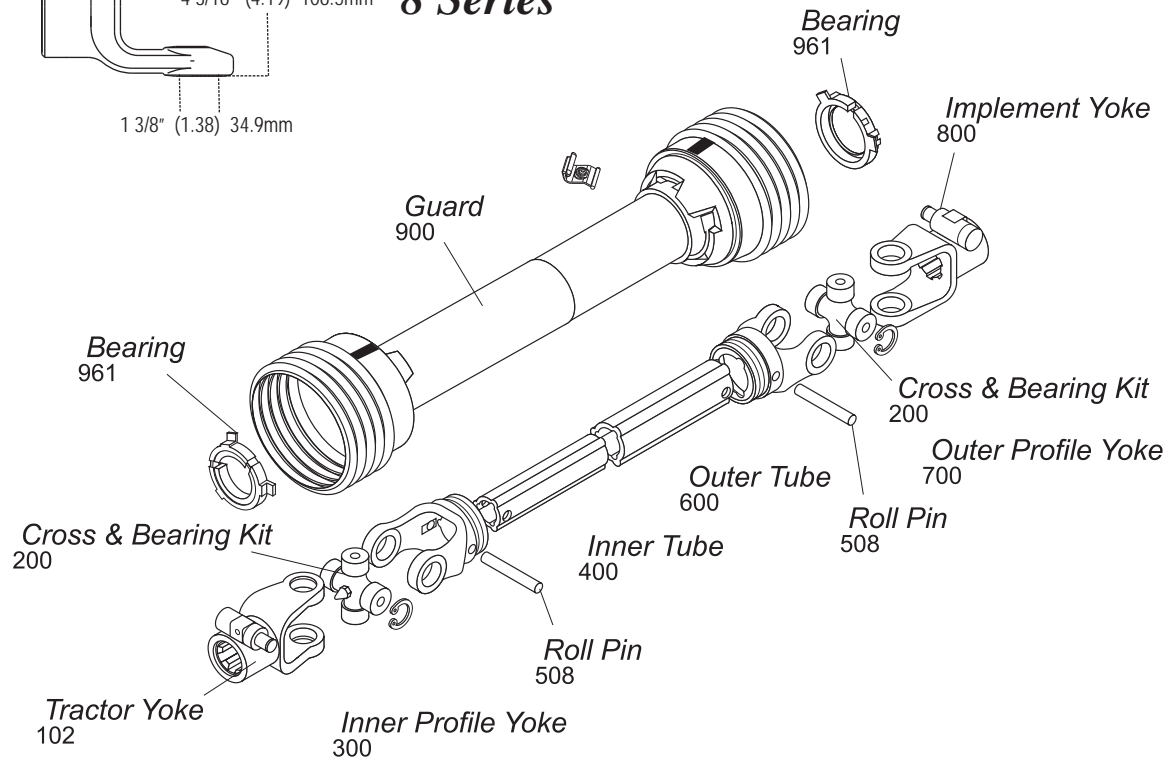
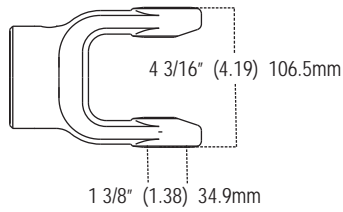
Stock Number	Overall Comp. Length Dim. "A"	Max. Running Length	Tractor Yoke	Implement Yoke
14006748	48"	70"	1 3/8" x 6 Spl. QD	1 3/4" Rd. w/3/8" Keyway
14046748	48"	70"	1 3/8" x 6 Spl. QD	*
14046760	60"	83"	1 3/8" x 6 Spl. QD	*

*Drivelines are furnished without Cross & Bearing Kit and Implement Yoke. Select kit and yoke as required.

Interchanges with Bondioli & Pavesi

AB8

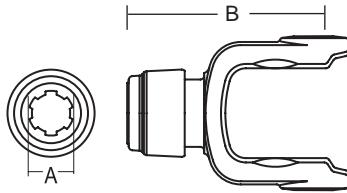
8 Series



Tractor Yoke

Safety Slide Lock

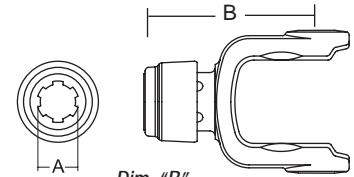
Repair Kit —
*13004000
**13004020



Stock Number	Dim. "A" Bore	Dim. "B" mm	Dim. "B" in.
101-6806*	1 3/8" x 6 Spl.	145.0	5.71"
101-6820**	1 3/4" x 20 Spl.	149.0	5.87"
101-6821*	1 3/8" x 21 Spl.	145.0	5.71"

Auto-Lok

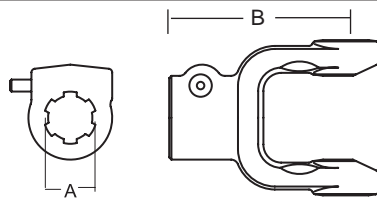
Repair Kit —
*13004000



Stock Number	Dim. "A" Bore	Dim. "B" mm	Dim. "B" in.
110-6806*	1 3/8" x 6 Spl.	145.0	5.71"

Quick Disconnect

Repair Kit —
*13007138
**13007120

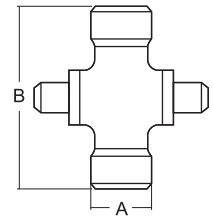


Stock Number	Dim. "A" Bore	Dim. "B" mm	Dim. "B" in.
102-6806*	1 3/8" x 6 Spl.	126.0	4.96"
102-6820**	1 3/4" x 20 Spl.	129.0	5.08"
102-6821*	1 3/8" x 21 Spl.	126.0	4.96"
102-6828**	1 3/4" x 6 Spl.	129.0	5.08"

Cross & Bearing Kit (R-Kit)

(Recommended 8 hour grease interval)

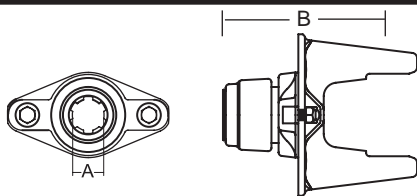
Snap Ring Located In Yoke



Stock Number	Dim. "A" mm	Dim. "A" in.	Dim. "B" mm	Dim. "B" in.
200-6806	34.9	1.38"	106.5	4.19"

Ball Shear

Repair Kit —
*13004000
**13004020

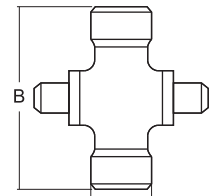


Stock Number	Dim. "A" Bore	Dim. "B" mm	Dim. "B" in.	Shear Bolt
104-6806*	1 3/8" x 6 Spl.	155.0	6.12"	3/8" - 16 Gr. 5
104-6820**	1 3/4" x 20 Spl.	169.0	6.64"	3/8" - 16 Gr. 5
104-6821*	1 3/8" x 21 Spl.	155.0	6.12"	3/8" - 16 Gr. 5

Extended Lubrication Cross & Bearing Kit (E-Kit)

(Recommended 50 hour grease interval)

Snap Ring Located In Yoke

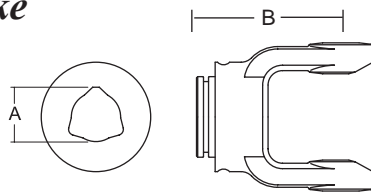


Stock Number	Dim. "A" mm	Dim. "A" in.	Dim. "B" mm	Dim. "B" in.
201-6806	34.9	1.38"	106.5	4.19"

Replacement Shear Bolt Part No. 11-10445

8 Series (cont'd.)

Inner Profile Yoke

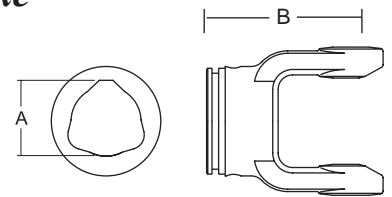


With Bearing Groove
(Guard must rotate freely on yoke)

Stock Number	Dim. "A"		Dim. "B"	
	mm	in.	mm	in.
300-6845*	45.2	1.78"	120.0	4.72"
300-6854	54.2	2.13"	120.0	4.72"

*Old Series 8

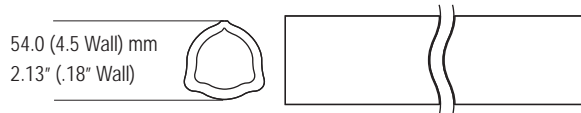
Outer Profile Yoke



With Bearing Groove
(Guard must rotate freely on yoke)

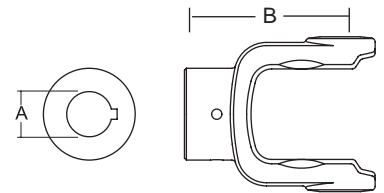
Stock Number	Dim. "A"		Dim. "B"	
	mm	in.	mm	in.
700-6863	63.0	2.48"	120.0	4.72"

Inner Tube



Stock Number	Length	
	m	in.
600-6654	1.5	59.06"
604-6654	1.0	39.37"

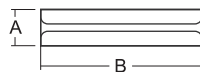
Implement Yoke



Round Bore
With Keyway & Set Screw

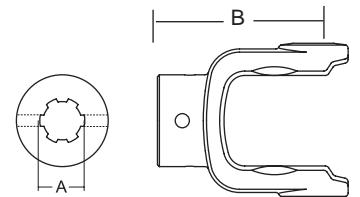
Stock Number	Dim. "A"		Dim. "B"		Standard keyway	
	mm	in.	mm	in.	mm	in.
800-6822	35.0	1.38"	117.0	4.61"	8.0	.31"
800-6824	38.1	1.50"	120.0	4.72"	9.5	.37"
800-6828	44.5	1.75"	120.0	4.72"	9.5	.37"
800-6832	50.8	2.00"	120.0	4.72"	12.7	.5"

Roll Pin



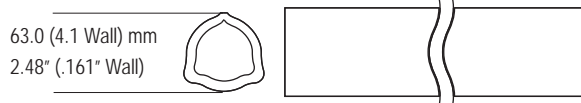
Stock Number	Dim. "A"		Dim. "B"	
	mm	in.	mm	in.
508-0880	8.0	.31"	80.0	3.15"
508-1280	12.0	.47"	80.0	3.15"

Spline Bore
With Pinhole



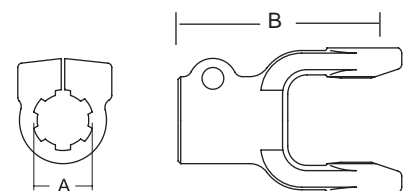
Stock Number	Dim. "A"	Dim. "B"		Pinhole	
		mm	in.	mm	in.
801-6806	1 3/8" x 6 Spl.	117.0	4.61"	7.93	.312"

Outer Tube



Stock Number	Length	
	m	in.
600-6863	1.5	59.06"
604-6863	1.0	39.37"

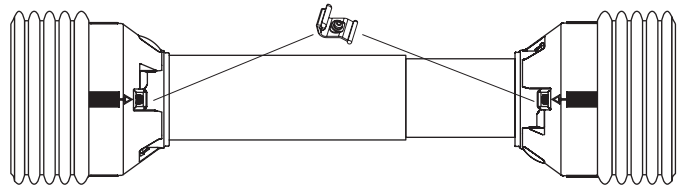
Clamp Yoke



Stock Number	Dim. "A"	Dim. "B"	
		mm	in.
807-6806	1 3/8" x 6 Spl.	124.0	4.88"
807-6820	1 3/4" x 20 Spl.	129.0	5.08"
807-6821	1 3/8" x 21 Spl.	124.0	4.88"

Guard

Order Bearings As Required



Stock Number	Fits Overall Driveline Length	Bearing Kit (2-per kit)
900-4548	48"	961-4589
900-4560	60"	961-4589

Assembly instructions included with guard bearing kit
Note: Guards must rotate freely on yokes

Easy Lock™ Replacement Kit

Part Number: 13005000 (4-per Kit)



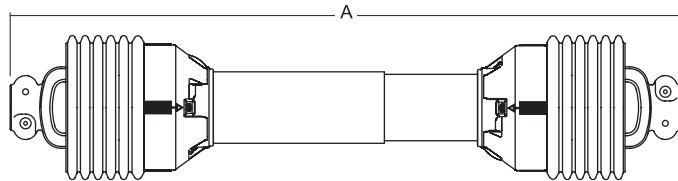
Guard Chain Kit

Insert the "S" hook through the guard loop and crimp shut



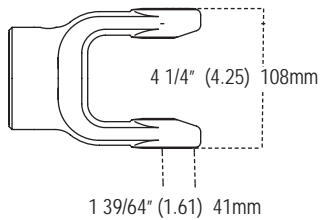
Part Number: 13006500 (2-per Kit)

Driveline



Stock Number	Overall Comp. Length Dim. "A"	Max. Running Length	Tractor Yoke	Implement Yoke
14006828	57"	83"	1 3/8" x 6 Spl. QD	1 3/4" Rd. w/3/8" Keyway
14006846	46"	63"	1 3/8" x 6 Spl. QD	1 3/8" x 6 Spl. QD
14006857	57"	65"	1 3/8" x 6 Spl. QD	1 3/8" x 6 Spl. QD
14046848	48"	70"	1 3/8" x 6 Spl. QD	*
14046860	60"	86"	1 3/8" x 6 Spl. QD	*
14066846	46"	63"	1 3/8" x 21 Spl. QD	1 3/8" x 21 Spl. QD
14406832	32"	40"	1 3/8" x 6 Spl. Safety Slide Lock	1 1/2" Rd. w/3/8" Keyway Shear Bolt Yoke

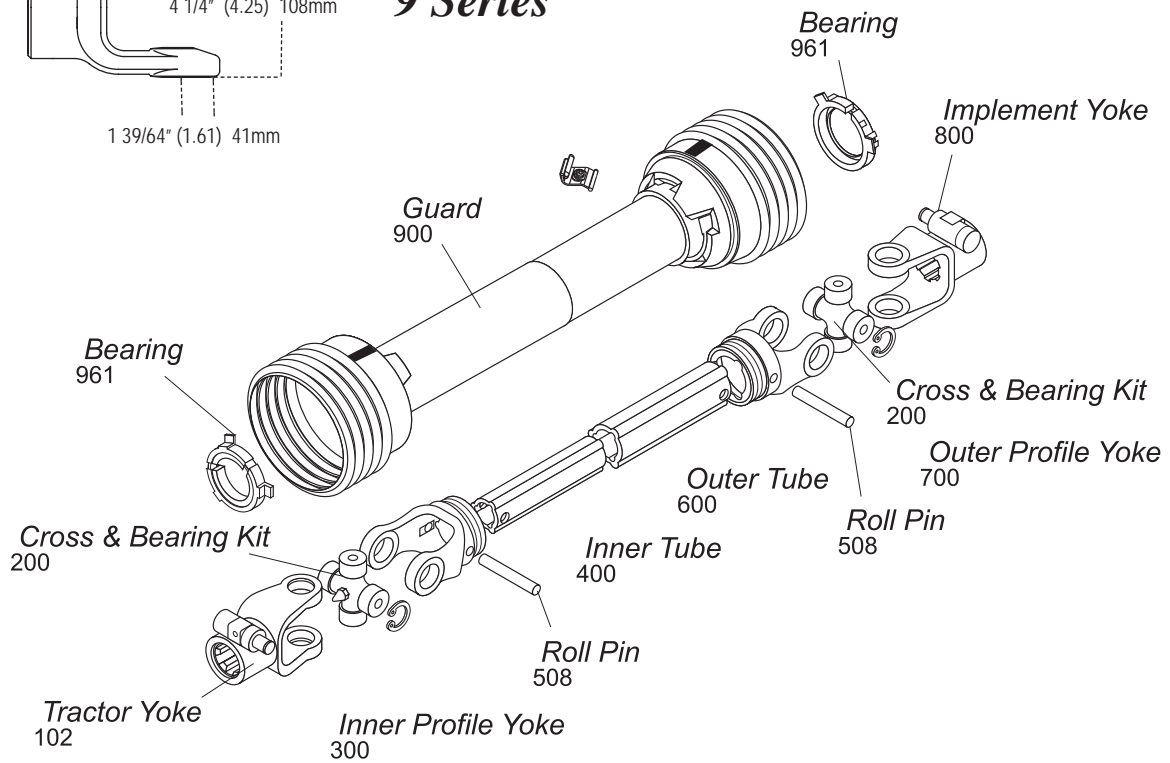
*Drivelines are furnished without Cross & Bearing Kit and Implement Yoke. Select kit and yoke as required.



9 Series

Interchanges with Bondioli & Pavesi

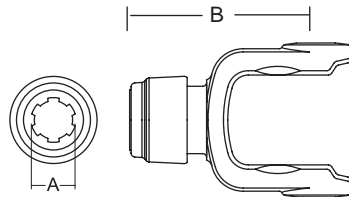
AB9



Tractor Yoke

Safety Slide Lock

Repair Kit —
*13004000
**13004020



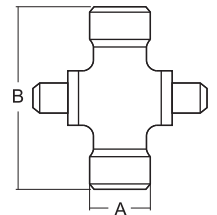
Stock Number	Dim. "A"	Dim. "B"	
	Bore	mm	in.
101-6906*	1 3/8" x 6 Spl.	150.0	5.91"
101-6920**	1 3/4" x 20 Spl.	150.0	5.91"
101-6921*	1 3/8" x 21 Spl.	150.0	5.91"

Cross & Bearing Kit

(R-Kit)

(Recommended 8 hour grease interval)

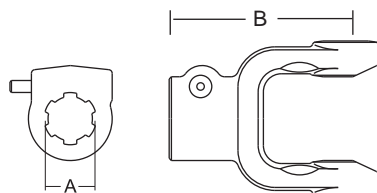
Snap Ring Located In Yoke



Stock Number	Dim. "A"		Dim. "B"	
	mm	in.	mm	in.
200-6908	41.0	1.61"	108	4.25"

Quick Disconnect

Repair Kit —
*13007138
**13007120



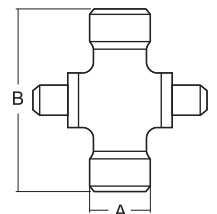
Stock Number	Dim. "A"	Dim. "B"	
	Bore	mm	in.
102-6906*	1 3/8" x 6 Spl.	128.0	5.04"
102-6920**	1 3/4" x 20 Spl.	131.0	5.16"
102-6921*	1 3/8" x 21 Spl.	128.0	5.04"

**Extended Lubrication
Cross & Bearing Kit**

(E-Kit)

(Recommended 50 hour grease interval)

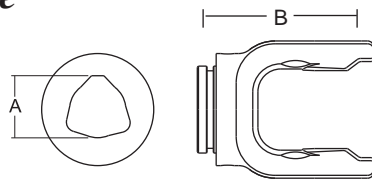
Snap Ring Located In Yoke



Stock Number	Dim. "A"		Dim. "B"	
	mm	in.	mm	in.
201-6908	41.0	1.61"	108	4.25"

Inner Profile Yoke

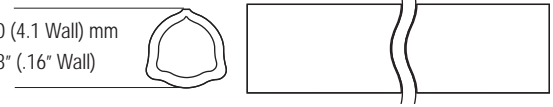
With Bearing Groove
(Guard must rotate freely on yoke)



Stock Number	Dim. "A"		Dim. "B"	
	mm	in.	mm	in.
300-6954	54.2	2.13"	123.0	4.84"

Outer Tube

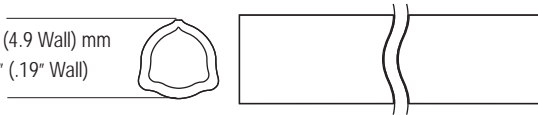
63.0 (4.1 Wall) mm
2.48" (.16" Wall)



Stock Number	Length	
	m	in.
600-6863	1.5	59.06"
604-6863	1.0	39.37"

Inner Profile Tube

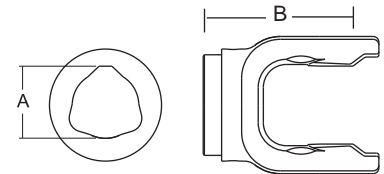
54.0 (4.9 Wall) mm
2.13" (.19" Wall)



Stock Number	Length	
	m	in.
400-6954	1.5	59.06"
404-6954	1.0	39.37"

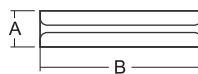
Outer Profile Yoke

With Bearing Groove
(Guard must rotate freely on yoke)



Stock Number	Dim. "A"		Dim. "B"	
	mm	in.	mm	in.
700-6963	63.0	2.48"	123.0	4.84"

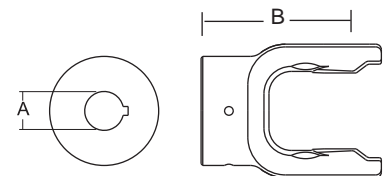
Roll Pin



Stock Number	Dim. "A"		Dim. "B"	
	mm	in.	mm	in.
508-1080	10.0	.39"	80.0	3.15"
508-1280	12.0	.47"	80.0	3.15"

Implement Yoke

Round Bore
With Keyway & Set Screw



Stock Number	Dim. "A"		Dim. "B"		Standard keyway	
	mm	in.	mm	in.	mm	in.
800-6922	35.0	1.38"	131.0	5.16"	8.0	.31"
800-6924	38.1	1.50"	131.0	5.16"	9.5	.38"

9 Series (cont'd.)

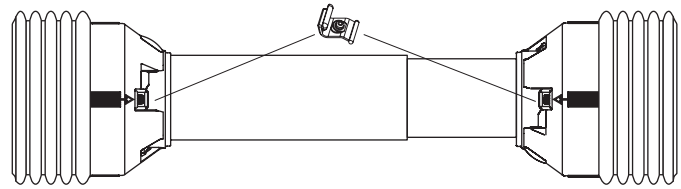
Guard

Order Bearings As Required

Stock

Number	Fits Overall Driveline Length	Bearing Kit (2-per kit)
900-4548	48"	961-4589
900-4560	60"	961-4589

Assembly instructions included with guard bearing kit
 Note: Guards must rotate freely on yokes



Easy Lock™ Replacement Kit

Part Number: 13005000 (4-per Kit)



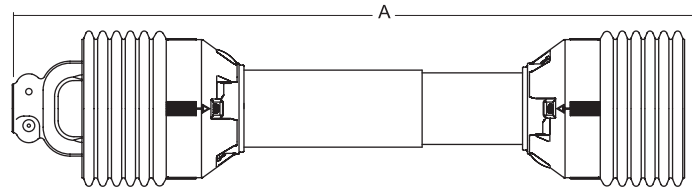
Guard Chain Kit

Insert the "S" hook through the guard loop and crimp shut



Part Number: 13006500 (2-per Kit)

Driveline



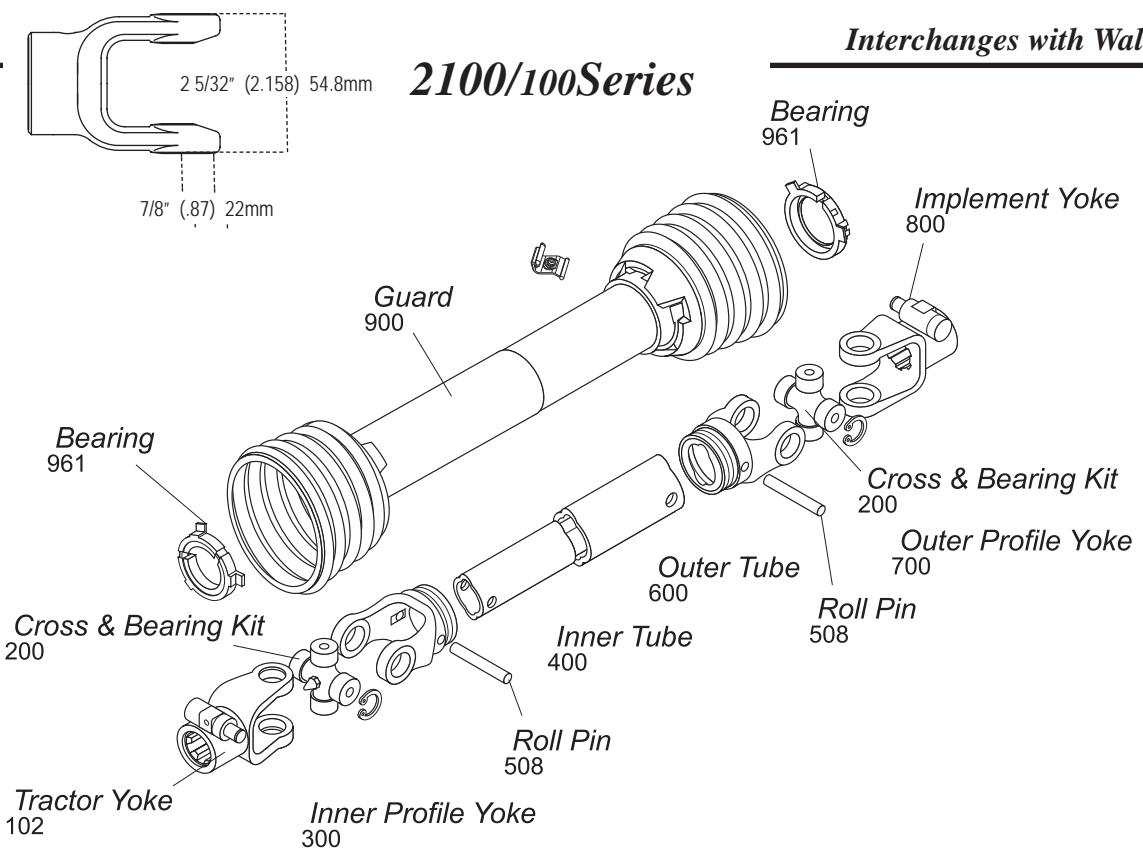
Stock Number	Overall Comp. Length Dim. "A"	Max. Running Length	Tractor Yoke	Implement Yoke
14046948	48"	70"	1 3/8" x 6 Spl. QD	*
14046960	60"	86"	1 3/8" x 6 Spl. QD	*

*Drivelines are furnished without Cross & Bearing Kit and Implement Yoke. Select kit and yoke as required.

Interchanges with Walterscheid

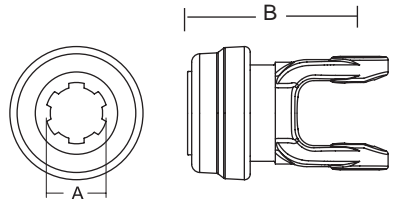
2100/100Series

AW10



Tractor Yoke

Safety Slide Lock
Repair Kit —
*19-15094

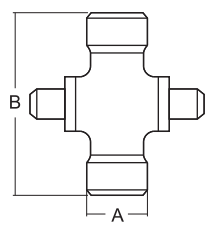


Stock Number	Dim. "A"	Dim. "B"	
		mm	in.
101-7106*	1 3/8" x 6 Spl.	98.0	3.86"
101-7121*	1 3/8" x 21 Spl.	98.0	3.86"

Cross & Bearing Kit (R-Kit)

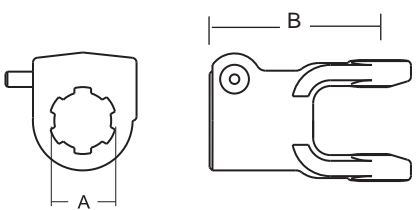
(Recommended 8 hour grease interval)

Snap Ring Located In Yoke



Stock Number	Dim. "A"		Dim. "B"	
	mm	in.	mm	in.
200-7155	22.0	.87"	54.8	2.158"

Quick Disconnect
Repair Kit —
*13007138

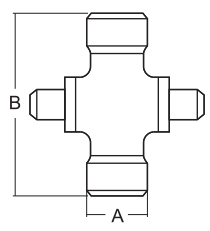


Stock Number	Dim. "A"	Dim. "B"	
		mm	in.
102-7106*	1 3/8" x 6 Spl.	89.0	3.5"
102-7121*	1 3/8" x 21 Spl.	89.0	3.5"

Extended Lubrication Cross & Bearing Kit (E-Kit)

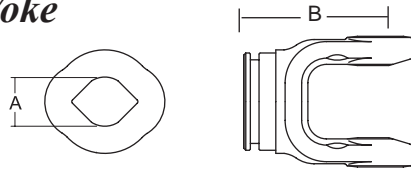
(Recommended 50 hour grease interval)

Snap Ring Located In Yoke



Stock Number	Dim. "A"		Dim. "B"	
	mm	in.	mm	in.
201-7155	22.0	.87"	54.8	2.158"

Inner Profile Yoke

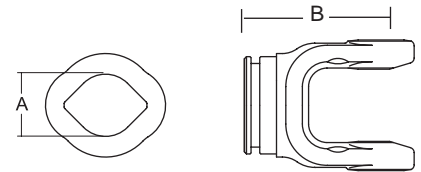


With Bearing Groove

(Guard must rotate freely on yoke)

Stock Number	Dim. "A"		Dim. "B"	
	mm	in.	mm	in.
300-7123	23.8	.94"	66.0	2.6"

Outer Profile Yoke

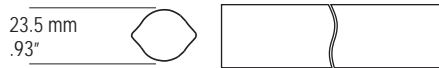


With Bearing Groove

(Guard must rotate freely on yoke)

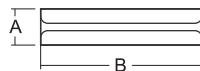
Stock Number	Dim. "A"		Dim. "B"	
	mm	in.	mm	in.
700-7130	30	1.18"	66.0	2.6"

Inner Tube



Stock Number	Length	
	m	in.
400-7123	1.5	59.06"
404-7123	1.0	39.37"

Roll Pin



Stock Number	Dim. "A"		Dim. "B"	
	mm	in.	mm	in.
508-0850	8.0	.31"	50.0	1.97"

Outer Tube



Stock Number	Length	
	m	in.
600-7130	1.5	59.06"
604-7130	1.0	39.37"

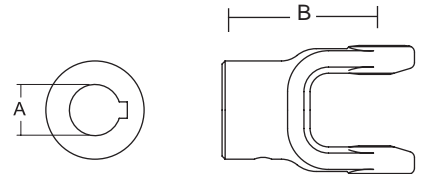
Guard

Order Bearings As Required

Stock Number	Fits Overall Driveline Length	Bearing Kit (2-per kit)
900-2548	48"	961-5005
900-2560	60"	961-5005

Assembly instructions included with guard bearing kit
Note: Guards must rotate freely on yokes

Implement Yoke



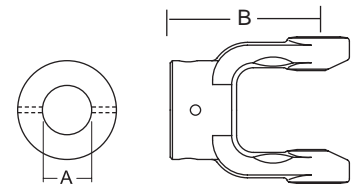
Round Bore

With Keyway & Set Screw

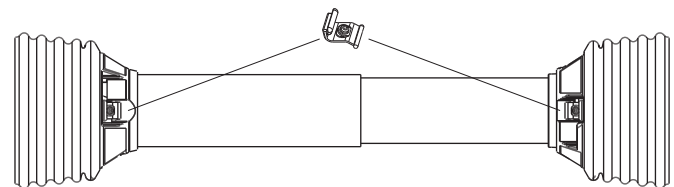
Stock Number	Dim. "A"		Dim. "B"		Standard keyway	
	mm	in.	mm	in.	mm	in.
800-7125	25.0	.98"	78.0	3.07"	8.0	.31"
800-7130	30.0	1.18"	78.0	3.07"	8.0	.31"

Shear Pin

With Pin Hole



Stock Number	Dim. "A"		Dim. "B"		Pinhole	
	mm	in.	mm	in.	mm	in.
802-7110	31.8	1.25"	78.0	3.07"	6.35	.25"
802-7130	30.0	1.18"	78.0	3.07"	10.00	.394"



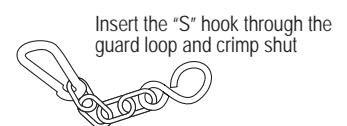
Easy Lock™ Replacement Kit

Part Number: 13005000 (4-per Kit)



Guard Chain Kit

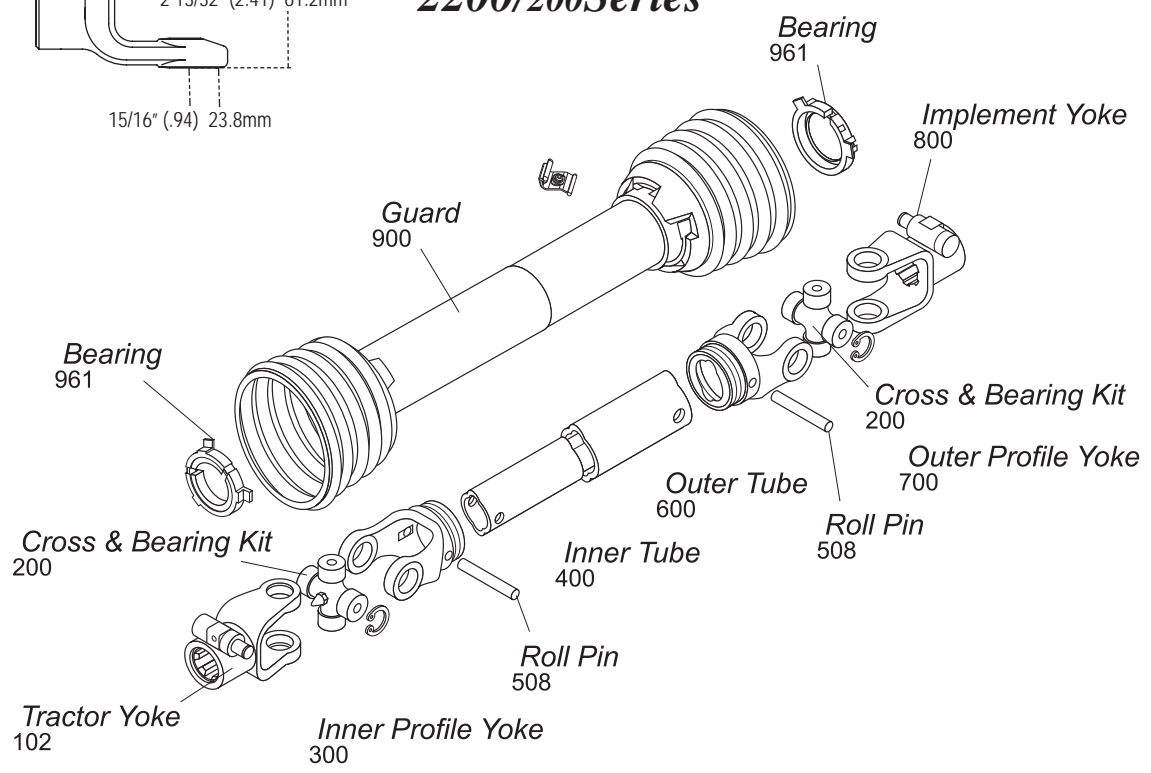
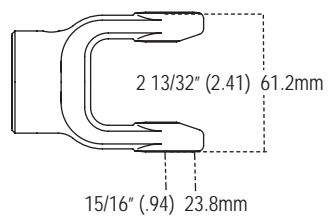
Part Number: 13006500 (2-per Kit)



Interchanges with Walterscheid

2200/200Series

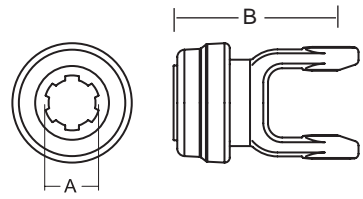
AW20



Cross & Bearing Kit and Outboard Yokes interchange with Bondioli 2 Series

Tractor Yoke

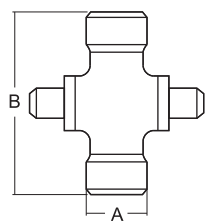
Safety Slide Lock
Repair Kit —
*19-15094



Stock Number	Dim. "A"	Dim. "B"	
		mm	in.
101-8206*	1 3/8" x 6 Spl.	106.0	4.17"
101-8221*	1 3/8" x 21 Spl.	105.0	4.13"

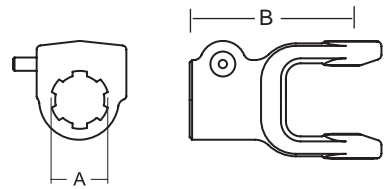
Cross & Bearing Kit (R-Kit)

(Recommended 8 hour grease interval)
Snap Ring Located In Yoke



Stock Number	Dim. "A"		Dim. "B"	
	mm	in.	mm	in.
200-8261	23.8	.94"	61.2	2.41"

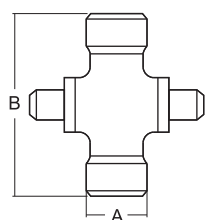
Quick Disconnect
Repair Kit —
*13007138



Stock Number	Dim. "A"	Dim. "B"	
		mm	in.
102-8206*	1 3/8" x 6 Spl.	98.0	3.86"
102-8218*	1 1/8" x 6 Spl.	94.0	3.70"
102-8221*	1 3/8" x 21 Spl.	98.0	3.86"

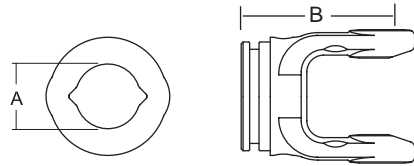
Extended Lubrication Cross & Bearing Kit (E-Kit)

(Recommended 50 hour grease interval)
Snap Ring Located In Yoke



Stock Number	Dim. "A"		Dim. "B"	
	mm	in.	mm	in.
201-8261	23.8	.94	61.2	2.41"

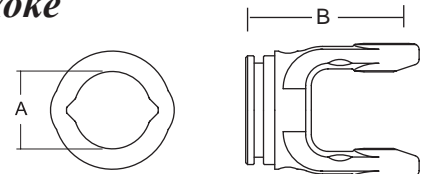
Inner Profile Yoke



With Bearing Groove
(Guard must rotate freely on yoke)

Stock Number	Dim. "A"		Dim. "B"	
	mm	in.	mm	in.
300-7234	34.5	1.36"	75.0	2.95"

Outer Profile Yoke



With Bearing Groove
(Guard must rotate freely on yoke)

Stock Number	Dim. "A"		Dim. "B"	
	mm	in.	mm	in.
700-7241	41.3	1.63	75.0	2.95"

Inner Tube

34.5 (4.0 Wall) mm
1.36" (.16" Wall)



Stock Number	Length	
	m	in.
400-7234	1.5	59.06"
404-7234	1.0	39.37"

Implement Yoke

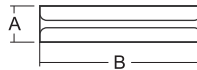


Round Bore

With Keyway & Set Screw

Stock Number	Dim. "A"		Dim. "B"		Standard keyway	
	mm	in.	mm	in.	mm	in.
800-8225	25.0	.98"	80.0	3.15"	8.0	.31"
800-8208	25.4	1.0"	80.0	3.15"	6.4	.25"
800-8230	30.0	1.18"	80.0	3.15"	8.0	.31"
800-8210	31.8	1.25"	80.0	3.15"	6.4	.25"
800-8211	34.9	1.38"	80.0	3.15"	8.0	.31"
800-8218	28.6	1.13"	80.0	3.15"	6.4	.25"
800-8220	31.8	1.25"	80.0	3.15"	8.0	.31"

Roll Pin



Stock Number	Dim. "A"		Dim. "B"	
	mm	in.	mm	in.
508-1060	10.0	.39"	60.0	2.36"

Outer Tube

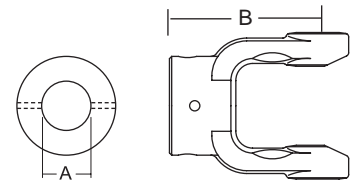
41.0 (2.9 Wall) mm
1.61" (.114" Wall)



Stock Number	Length	
	m	in.
600-7241	1.5	59.06"
604-7241	1.0	39.37"

Shear Pin

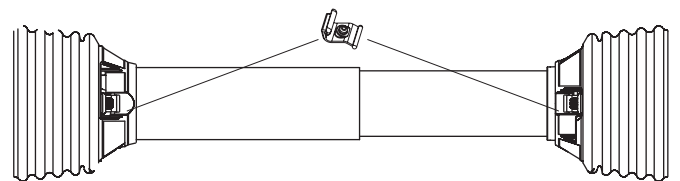
With Pin Hole



Stock Number	Dim. "A"		Dim. "B"		Pinhole	
	mm	in.	mm	in.	mm	in.
802-8220	31.8	1.25"	80.0	3.15"	6.35	.25"
802-8222	35.0	1.38"	92.0	3.62"	12.9	.50"
802-8225	25.0	.98"	80.0	3.15"	8.0	.315"
802-8230	30.0	1.18"	80.0	3.15"	10.0	.394"

Guard

Order Bearings As Required



Stock Number	Fits Overall Driveline Length	Bearing Kit (2-per kit)
900-2548	48"	961-0251
900-2560	60"	961-0251

Assembly instructions included with guard bearing kit
Note: Guards must rotate freely on yokes

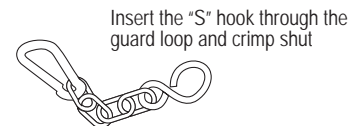
Easy Lock™ Replacement Kit

Part Number: 13005000 (4-per Kit)



Guard Chain Kit

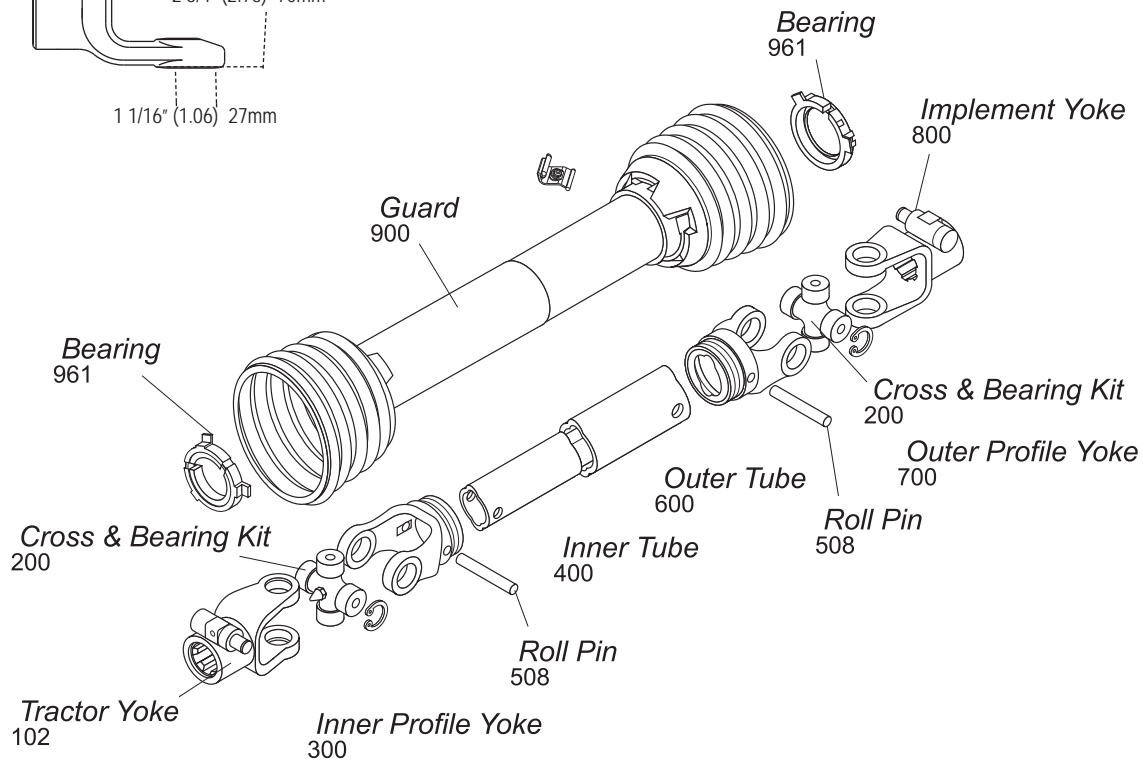
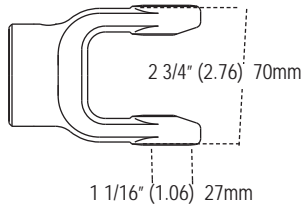
Part Number: 13006500 (2-per Kit)



Insert the "S" hook through the guard loop and crimp shut

I Series

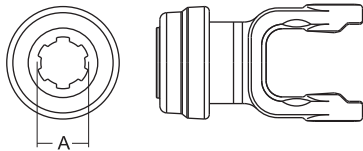
AW11



Cross & Bearing Kit and Outboard Yokes interchange with Bondioli 3 Series

Tractor Yoke

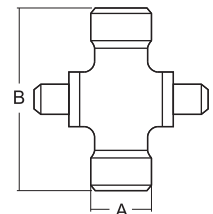
Safety Slide Lock
Repair Kit — *19-15094



Stock Number	Dim. "A" Bore	Dim. "B"	
		mm	in.
101-8306*	1 3/8" x 6 Spl.	120.0	4.72"
101-8321*	1 3/8" x 21 Spl.	120.0	4.72"

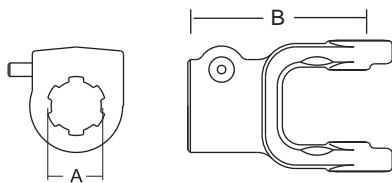
Cross & Bearing Kit

(R-Kit)
(Recommended 8 hr. grease interval)



Snap Ring Located In Yoke

Stock Number	Dim. "A"		Dim. "B"	
	mm	in.	mm	in.
200-8370	27.0	1.06"	70.0	2.76"

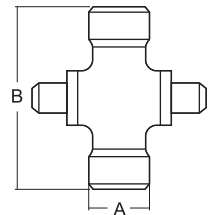


Quick Disconnect
Repair Kit — *13007138

Stock Number	Dim. "A" Bore	Dim. "B"	
		mm	in.
102-8306*	1 3/8" x 6 Spl.	102.0	4.02"
102-8321*	1 3/8" x 21 Spl.	102.0	4.02"

Extended Lubrication Cross & Bearing Kit

(E-Kit)
(Recommended 50 hr. grease interval)

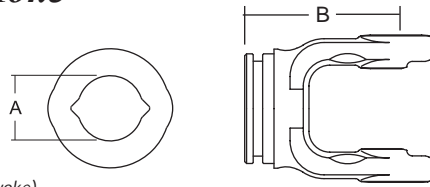


Snap Ring Located In Yoke

Stock Number	Dim. "A"		Dim. "B"	
	mm	in.	mm	in.
201-8370	27.0	1.06"	70.0	2.76"

I Series (cont'd.)

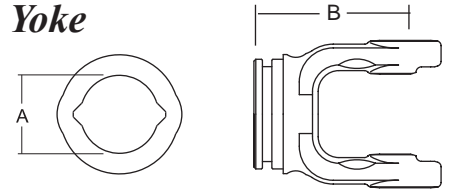
Inner Profile Yoke



With Bearing Groove
(Guard must rotate freely on yoke)

Stock Number	Dim. "A"		Dim. "B"	
	mm	in.	mm	in.
300-7334	34.5	1.36"	80.0	3.15"

Outer Profile Yoke



With Bearing Groove
(Guard must rotate freely on yoke)

Stock Number	Dim. "A"		Dim. "B"	
	mm	in.	mm	in.
700-7341	41.3	1.63"	80.0	3.15"

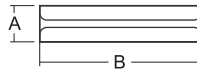
Inner Tube

34.5 (4.0 Wall) mm
1.36" (.16" Wall)



Stock Number	Length	
	m	in.
400-7234	1.5	59.06"
404-7234	1.0	39.37"

Roll Pin



Stock Number	Dim. "A"		Dim. "B"	
	mm	in.	mm	in.
508-1065	10.0	.39"	65.0	2.56"

Outer Tube

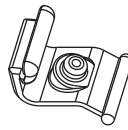
41.0 (2.9 Wall) mm
1.61" (.114" Wall)



Stock Number	Length	
	m	in.
600-7241	1.5	59.06"
604-7241	1.0	39.37"

Easy Lock™ Replacement Kit

Part Number: 13005000 (4-per Kit)



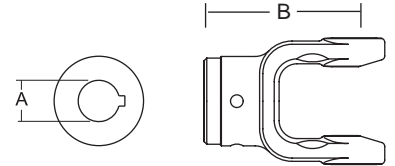
Guard

Order Bearings As Required

Stock Number	Overall Driveline Length	Bearing Kit (2-per kit)
900-2548	48"	961-0251
900-2560	60"	961-0251

Assembly instructions included with guard bearing kit
NOTE: Guards must rotate freely on yokes

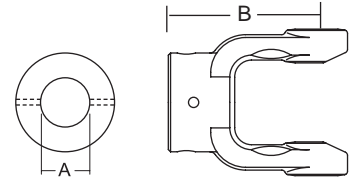
Implement Yoke



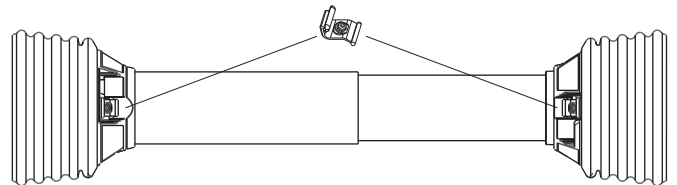
Round Bore
With Keyway & Set Screw

Stock Number	Dim. "A" Bore		Dim. "B"		Standard Keyway	
	mm	in.	mm	in.	mm	in.
800-8325	25.0	0.98"	92.0	3.62"	8.0	.31"
800-8330	30.0	1.18"	92.0	3.62"	8.0	.31"
800-8310	31.8	1.25"	92.0	3.62"	6.4	.25"
800-8311	34.9	1.37"	92.0	3.62"	8.0	.31"

Shear Pin
With Pin Hole

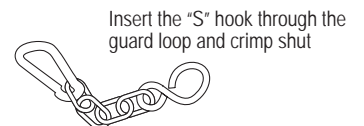


Stock Number	Dim. "A" Bore		Dim. "B"		Standard Keyway	
	mm	in.	mm	in.	mm	in.
802-8310	31.8	1.25"	92.0	3.62"	6.35	.25"
802-8325	31.8	0.98"	92.0	3.62"	8.00	.315"
802-8330	30.0	1.18"	92.0	3.62"	10.00	.394"
802-8335	35.0	1.38"	92.0	3.62"	12.90	.50"



Guard Chain Kit

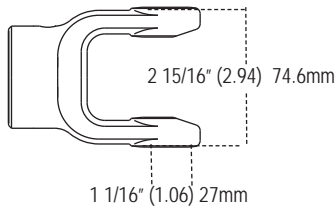
Part Number: 13006500 (2-per Kit)



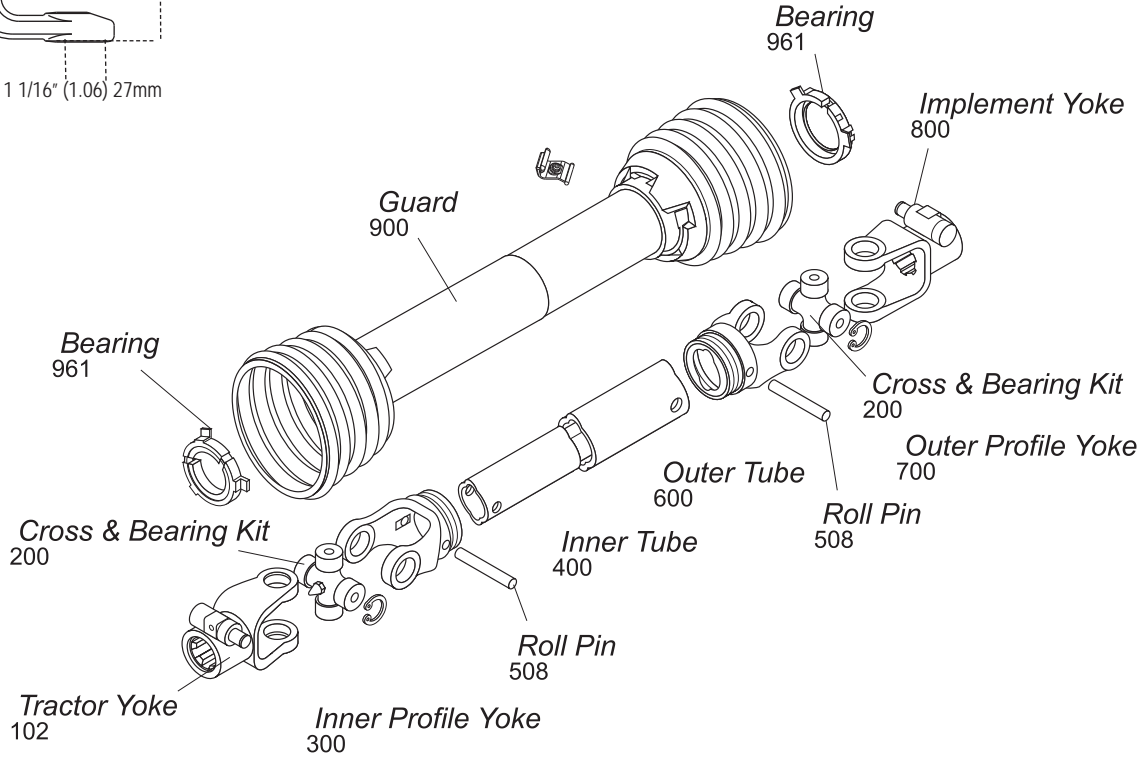
Insert the "S" hook through the guard loop and crimp shut

2300/210 Series

AW21



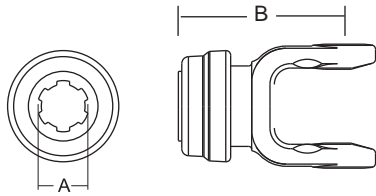
1 1/16" (1.06) 27mm



METRIC DRIVE LINES & COMPONENTS

Cross & Bearing Kit and Outboard Yokes interchange with Bondioli 4 Series

Tractor Yoke



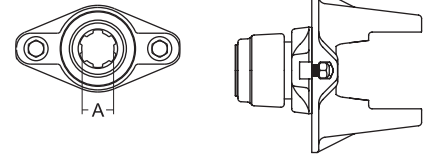
Safety Slide Lock

Repair Kit — *19-15094

Stock Number	Dim. "A" Bore	Dim. "B"	
		mm	in.
101-8406*	1 3/8" x 6 Spl.	113.0	4.45"
101-8421*	1 3/8" x 21 Spl.	113.0	4.45"

Ball Shear Repair Kit

— *13004000
**13004020

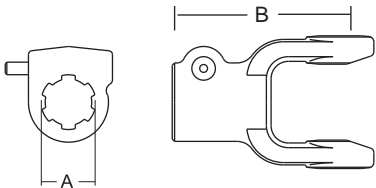


Stock Number	Dim. "A" Bore	Dim. "B"		Shearbolt
		mm	in.	
104-8406*	1 3/8" x 6 Spl.	141.0	5.54"	3/8" - 16 Gr. 5
104-8420**	1 3/4" x 20 Spl.	154.0	6.06"	3/8" - 16 Gr. 5
104-8421*	1 3/8" x 21 Spl.	141.0	5.54"	3/8" - 16 Gr. 5

Replacement Shear Bolt Part No. 11-10445

Quick Disconnect

Repair Kit — *13007138

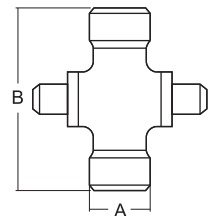


Stock Number	Dim. "A" Bore	Dim. "B"	
		mm	in.
102-8406*	1 3/8" x 6 Spl.	107.0	4.21"
102-8418*	1 1/8" Hex	107.0	4.21"
102-8421*	1 3/8" x 21 Spl.	107.0	4.21"

Cross & Bearing Kit (R-Kit)

(Recommended 8 hr. grease interval)

Snap Ring Located In Yoke

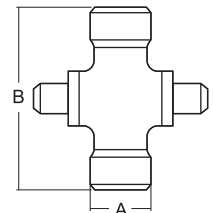


Stock Number	Dim. "A"		Dim. "B"	
	mm	in.	mm	in.
200-8474	27.0	1.06"	74.6	2.94"

Extended Lubrication Cross & Bearing Kit (E-Kit)

(Recommended 50 hr. grease interval)

Snap Ring Located In Yoke

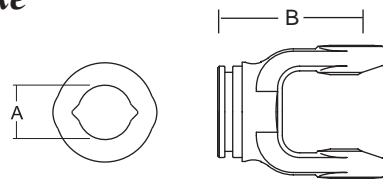


Stock Number	Dim. "A"		Dim. "B"	
	mm	in.	mm	in.
201-8474	27.0	1.06"	74.6	2.94"

2300/210 Series (cont'd.)

Inner Profile Yoke

With Bearing Groove
(Guard must rotate freely on yoke)

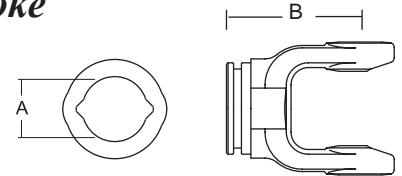


Stock Number	Dim. "A" Bore		Dim. "B"	
	mm	in.	mm	in.
300-7434	34.5	1.36"	85.0	3.35"
300-7439*	39.5	1.56"	85.0	3.35"

*Uses 902-3548 Guard & 961-3525 Bearing Kit

Outer Profile Yoke

With Bearing Groove
(Guard must rotate freely on yoke)



Stock Number	Dim. "A" Bore		Dim. "B"	
	mm	in.	mm	in.
700-7441	41.3	1.63"	85.0	3.35"
701-7448*	48.0	1.89"	90.0	3.54"

*Uses 902-3548 Guard & 961-3525 Bearing Kit

Inner Tube

34.5 (4.0 Wall) mm
1.36" (.16" Wall)

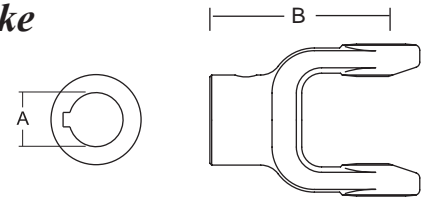


Stock Number	Length	
	m	in.
400-7234	1.5	59.06"
404-7234	1.0	39.37"

Implement Yoke

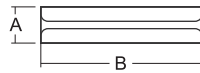
Round Bore

With Keyway & Set Screw



Stock Number	Dim. "A" Bore		Dim. "B"		Standard Keyway	
	mm	in.	mm	in.	mm	in.
800-8430	30.0	1.18"	95.0	3.74"	8.0	.31"
800-8410	31.8	1.25"	95.0	3.74"	6.4	.25"
800-8411	34.9	1.38"	95.0	3.74"	8.0	.31"
800-8424	38.1	1.50"	95.0	3.74"	9.5	.38"
800-8435	35.0	1.38"	95.0	3.74"	10.0	.39"

Roll Pin



Stock Number	Dim. "A"		Dim. "B"	
	mm	in.	mm	in.
508-1065	10.0	.39"	65.0	2.56"

Outer Tube

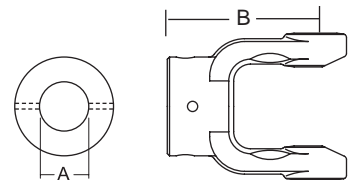
41.0 (2.9 Wall) mm
1.61" (.114" Wall)



Stock Number	Length	
	m	in.
600-7241	1.5	59.06"
604-7241	1.0	39.37"

Shear Pin

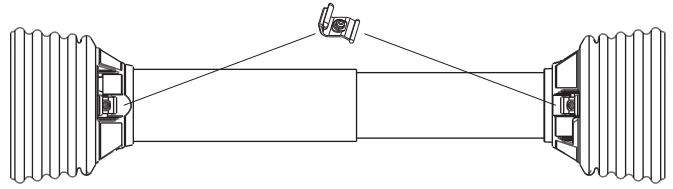
With Pin Hole



Stock Number	Dim. "A" Bore		Dim. "B"		Pinhole	
	mm	in.	mm	in.	mm	in.
802-8420	31.8	1.25"	95.0	3.74"	6.35	.25"
802-8430	30.0	1.18"	95.0	3.74"	10.0	.39"
802-8435	35.0	1.38"	95.0	3.74"	12.90	.50"

Guard

Order Bearings As Required

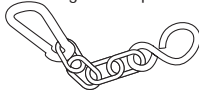


Stock Number	Overall Driveline Length	Bearing Kit (2-per kit)
900-2548	48"	961-0251
900-2560	60"	961-0251

Assembly instructions included with guard bearing kit
NOTE: Guards must rotate freely on yokes

Guard Chain Kit

Insert the "S" hook through the guard loop and crimp shut



Part Number: 13006500 (2-per Kit)

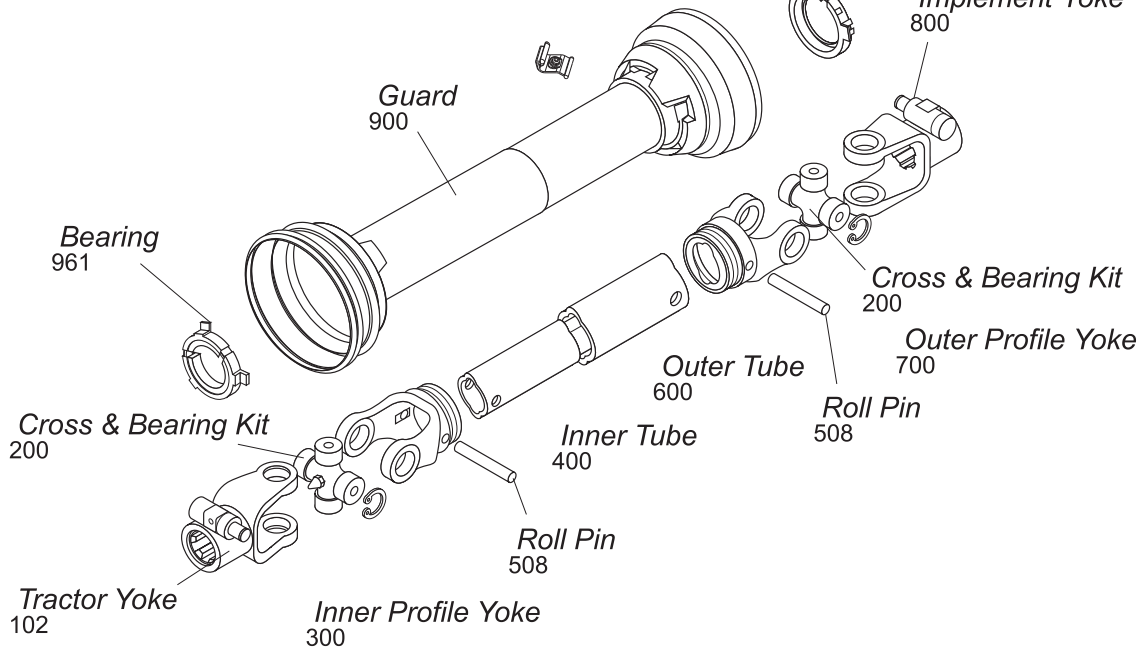
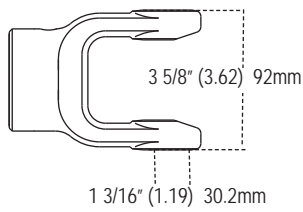
Easy Lock™ Replacement Kit

Part Number: 13005000 (4-per Kit)



220/720 Series

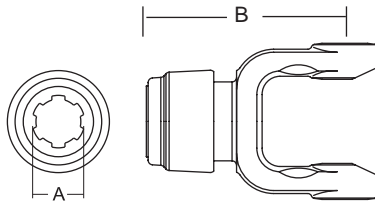
AW22



Cross & Bearing Kit and Outboard Yokes interchange with Bondioli 6 Series

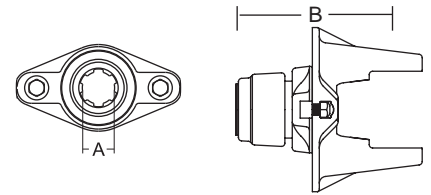
Tractor Yoke

Safety Slide Lock
Repair Kit —
*13004000
**13004020



Stock Number	Dim. "A" Bore	Dim. "B"	
		mm	in.
101-8606*	1 3/8" x 6 Spl.	132.0	5.20"
101-8620**	1 3/4" x 20 Spl.	135.0	5.32"
101-8621*	1 3/8" x 21 Spl.	132.0	5.20"

Ball Shear
Repair Kit —
*13004000
**13004020



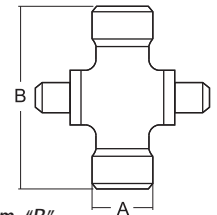
Stock Number	Dim. "A" Bore	Dim. "B"		Shear Bolt
		mm	in.	
104-8606*	1 3/8" x 6 Spl.	149.0	5.85"	3/8" - 16 Gr. 5
104-8620**	1 3/4" x 20 Spl.	162.0	6.37"	3/8" - 16 Gr. 5
104-8621*	1 3/8" x 21 Spl.	149.0	5.85"	3/8" - 16 Gr. 5

Replacement Shear Bolt Part No. 11-10445

Cross & Bearing Kit

(R-Kit)
(Recommended 8 hr. grease interval)

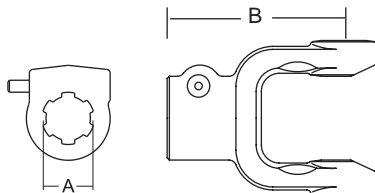
Snap Ring Located In Yoke



Stock Number	Dim. "A"		Dim. "B"	
	mm	in.	mm	in.
200-8692	30.2	1.19"	92.0	3.62"

Quick Disconnect

Repair Kit —
*13007138
**13007120



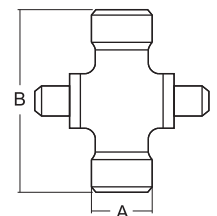
Stock Number	Dim. "A" Bore	Dim. "B"	
		mm	in.
102-8606*	1 3/8" x 6 Spl.	118.0	4.65"
102-8618*	1 1/8" Hex	117.0	4.61"
102-8620**	1 3/4" x 20 Spl.	120.0	4.72"
102-8621*	1 3/8" x 21 Spl.	118.0	4.65"

Extended Lubrication

Cross & Bearing Kit

(E-Kit)
(Recommended 50 hr. grease interval)

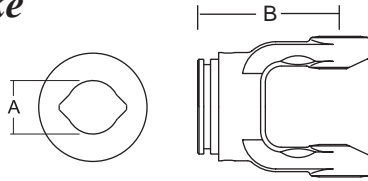
Snap Ring Located In Yoke



Stock Number	Dim. "A"		Dim. "B"	
	mm	in.	mm	in.
201-8692	30.2	1.19"	92.0	3.62"

Inner Profile Yoke

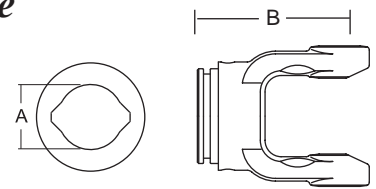
With Bearing Groove
(Guard must rotate freely on yoke)



Stock Number	Dim. "A" Bore		Dim. "B"	
	mm	in.	mm	in.
300-7539	39.5	1.56"	105.0	4.13"

Outer Profile Yoke

With Bearing Groove
(Guard must rotate freely on yoke)



Stock Number	Dim. "A" Bore		Dim. "B"	
	mm	in.	mm	in.
700-7548	48.0	1.89"	105.0	4.13"

Inner Tube

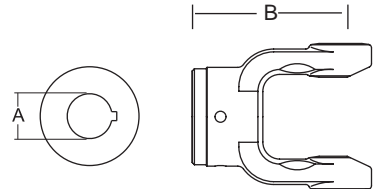
39.5 (4.5 Wall) mm
1.56" (.18" Wall)



Stock Number	Length	
	m	in.
400-7539	1.5	59.06"
404-7539	1.0	39.37"

Implement Yoke

Round Bore
With Keyway & Set Screw



Stock Number	Dim. "A" Bore		Dim. "B"		Standard Keyway	
	mm	in.	mm	in.	mm	in.
800-8610	31.8	1.25"	105.0	4.13"	6.4	.25"
800-8611	34.9	1.38"	105.0	4.13"	8.0	.31"
800-8624	38.1	1.50"	105.0	4.13"	9.5	.38"
800-8628	44.5	1.75"	108.0	4.25"	9.5	.38"
800-8635	35.0	1.38"	108.0	4.25"	10.0	.39"
800-8640	40.0	1.57"	108.0	4.25"	12.0	.47"

Roll Pin



Stock Number	Dim. "A"		Dim. "B"	
	mm	in.	mm	in.
508-1080	10.0	.39"	80.0	3.10"

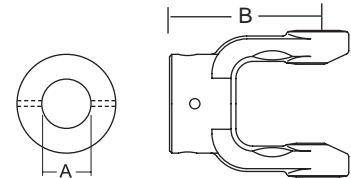
Outer Tube

48.0 (3.8 Wall) mm
1.89" (.15" Wall)



Stock Number	Length	
	m	in.
600-7548	1.5	59.06"
604-7548	1.0	39.37"

Shear Pin
With Pin Hole



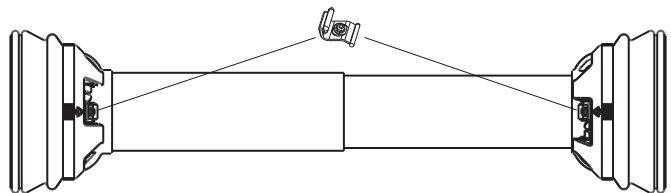
Stock Number	Dim. "A" Bore		Dim. "B"		Pinhole	
	mm	in.	mm	in.	mm	in.
802-8611	35.0	1.38"	105.0	4.13"	12.90	.50"
802-8620	31.8	1.25"	105.0	4.13"	6.35	.25"

Guard

Order Bearings As Required

Stock Number	Overall Driveline Length	Bearing Kit (2-per kit)
902-3548	48"	961-3525
902-3560	60"	961-3525

Assembly instructions included with guard bearing kit
NOTE: Guards must rotate freely on yokes



Easy Lock™ Replacement Kit

Part Number: 13005000 (4-per Kit)



Guard Chain Kit

Part Number: 13006500 (2-per Kit)

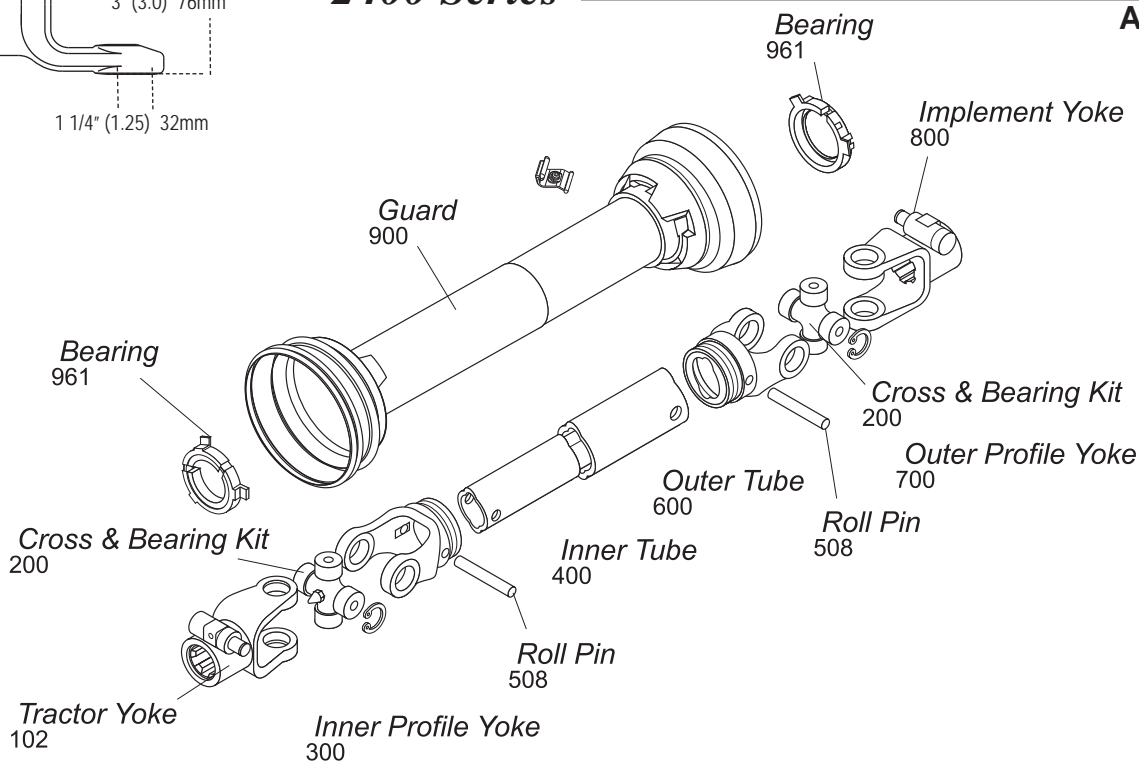
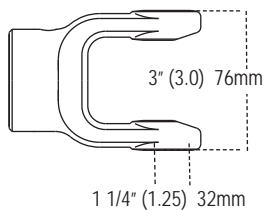
Insert the "S" hook through the guard loop and crimp shut



2400 Series

Interchanges with Walterscheid

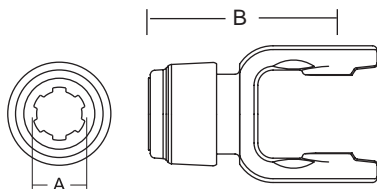
AW35



Tractor Yoke

Safety Slide Lock

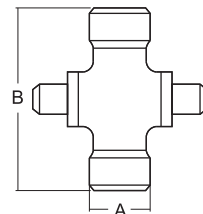
Repair Kit —
*13004000
**19-15094
***13004020



Stock Number	Dim. "A"	Dim. "B"	
	Bore	mm	in.
101-7606*	1 3/8" x 6 Spl.	126.0	4.96"
101-7618**	1 1/8" Hex	116.0	4.57"
101-7620***	1 3/4" x 20 Spl.	128.5	5.06"
101-7621*	1 3/8" x 21 Spl.	126.0	4.96"

Cross & Bearing Kit (R-Kit)

(Recommended 8 hr. grease interval)

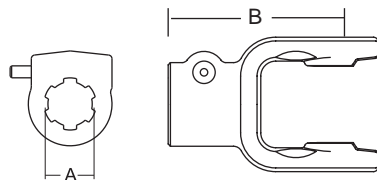


Snap Ring Located In Yoke

Stock Number	Dim. "A"		Dim. "B"	
	mm	in.	mm	in.
200-7676	32.0	1.26"	76.0	3.00"

Quick Disconnect

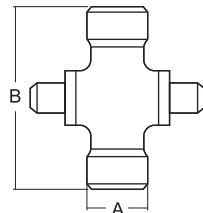
Repair Kit —
*13007138
**13007120



Stock Number	Dim. "A"	Dim. "B"	
	Bore	mm	in.
102-7606*	1 3/8" x 6 Spl.	116.0	4.57"
102-7620**	1 3/4" x 20 Spl.	116.0	4.57"
102-7621*	1 3/8" x 21 Spl.	116.0	4.57"

Extended Lubrication Cross & Bearing Kit (E-Kit)

(Recommended 50 hr. grease interval)

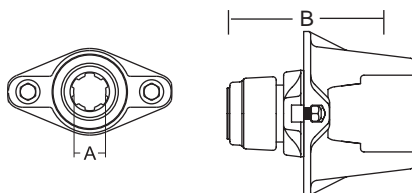


Snap Ring Located In Yoke

Stock Number	Dim. "A"		Dim. "B"	
	mm	in.	mm	in.
201-7676	32.0	1.26"	76.0	3.00"

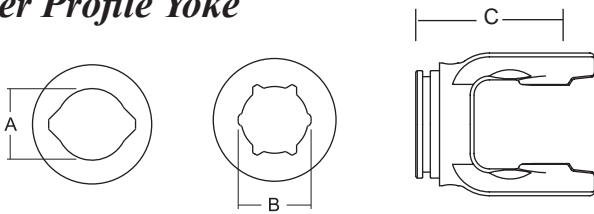
Ball Shear

Repair Kit —
*13004000
**13004020



Stock Number	Dim. "A"	Dim. "B"		Shear Bolt
	Bore	mm	in.	
104-7606*	1 3/8" x 6 Spl.	140.7	5.54"	3/8" - 16 Gr. 5
104-7620**	1 3/4" x 20 Spl.	153.9	6.06"	3/8" - 16 Gr. 5
104-7621*	1 3/8" x 21 Spl.	140.7	5.54"	3/8" - 16 Gr. 5

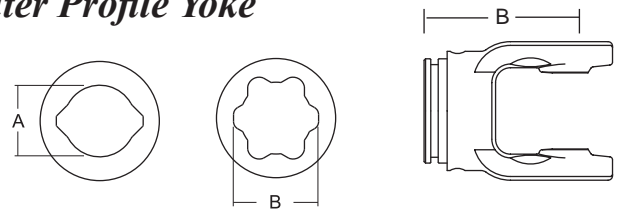
Inner Profile Yoke



With Bearing Groove
(Guard must rotate freely on yoke)

Stock Number	Dim. "A" Profile		Dim. "B" Profile		Dim. "C"	
	mm	in.	mm	in.	mm	in.
300-7639 (Lemon)	39.5	1.56"			92.0	3.62"
300-7651 (Star)			51.4	2.02"	92.0	3.62"

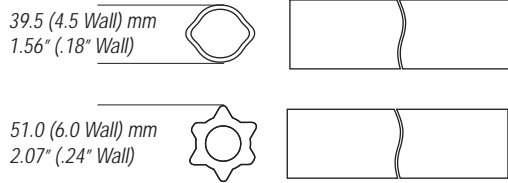
Outer Profile Yoke



With Bearing Groove
(Guard must rotate freely on yoke)

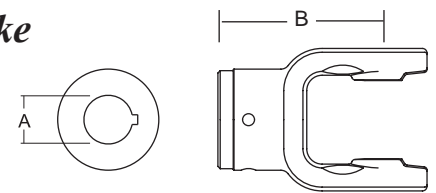
Stock Number	Dim. "A" Profile		Dim. "B" Profile		Dim. "C"	
	mm	in.	mm	in.	mm	in.
700-7648	48.0	1.89"			102.0	4.02"
700-7661			61.0	2.40"	102.0	4.02"

Inner Tube



Stock Number	Length	
	m	in.
400-7539 (Lemon)	1.5	59.06"
400-7651 (Star)	1.5	59.06"
404-7539 (Lemon)	1.0	39.37"
404-7651 (Star)	1.0	39.37"

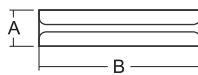
Implement Yoke



Round Bore
With Keyway & Set Screw

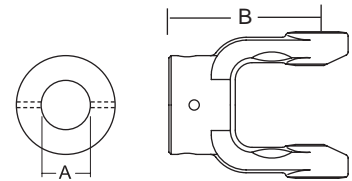
Stock Number	Dim. "A" Bore		Dim. "B"		Standard Keyway	
	mm	in.	mm	in.	mm	in.
800-7610	31.8	1.25"	112.0	4.41"	6.4	.25"
800-7611	34.9	1.38"	112.0	4.41"	8.0	.31"
800-7624	38.1	1.50"	112.0	4.42"	8.0	.31"
800-7635	35.0	1.38"	112.0	4.41"	10.0	.39"
800-7640	40.0	1.57"	112.0	4.41"	12.0	.47"

Roll Pin



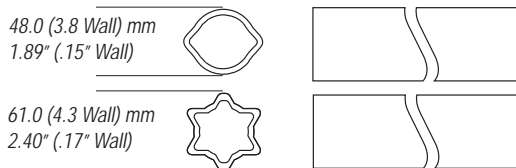
Stock Number	Dim. "A"		Dim. "B"	
	mm	in.	mm	in.
508-1075	10.0	.394"	75.0	2.95"

Shear Pin
With Pin Hole

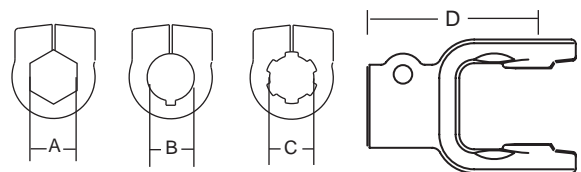


Stock Number	Dim. "A" Bore		Dim. "B"		Pinhole	
	mm	in.	mm	in.	mm	in.
802-7611	35.0	1.38"	105.0	4.13"	12.9	.50"
802-7630	30.0	1.18"	106.4	4.19"	10.0	.39"
802-7640	40.0	1.57"	106.4	4.19"	13.0	.512"

Outer Tube



Stock Number	Length	
	m	in.
600-7548 (Lemon)	1.5	59.06"
600-7961 (Star)	1.5	59.06"
604-7548 (Lemon)	1.0	39.37"
604-7961 (Star)	1.0	39.37"



Clamp Yoke

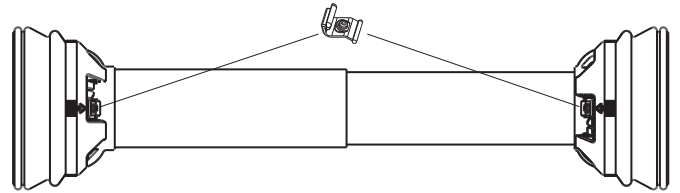
Stock Number	Dim. "A" Bore			Dim. "D"	
	Dim. "A" Bore	Dim. "B" Bore	Dim. "C" Bore	mm	in.
807-7606			1 3/8" x 6 Spl.	116.0	4.57"
807-7618	1 1/8" Hex			116.0	4.57"
807-7620			1 3/4" x 20 Spl.	116.0	4.57"
807-7621			1 3/8" x 21 Spl.	116.0	4.57"
807-7622		*1 3/8" Rd. Bore		116.0	4.57"

*w/ Keyway 10mm (.39")

2400 Series (cont'd.)

Guard

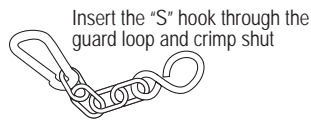
Order Bearings As Required



Stock Number	Overall Driveline Length	Bearing Kit (2-per kit)
902-3548	48"	961-3525
902-3560	60"	961-3525

Assembly instructions included with guard bearing kit
NOTE: Guards must rotate freely on yokes

Guard Chain Kit



Insert the "S" hook through the guard loop and crimp shut

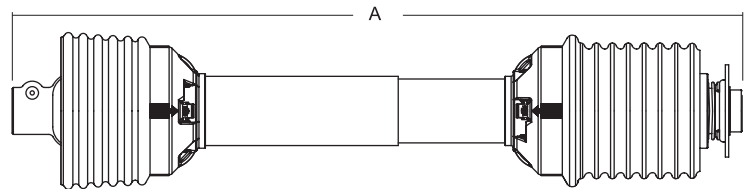
Part Number: 13006500 (2-per Kit)

Easy Lock™ Replacement Kit

Part Number: 13005000 (4-per Kit)



Drivelines

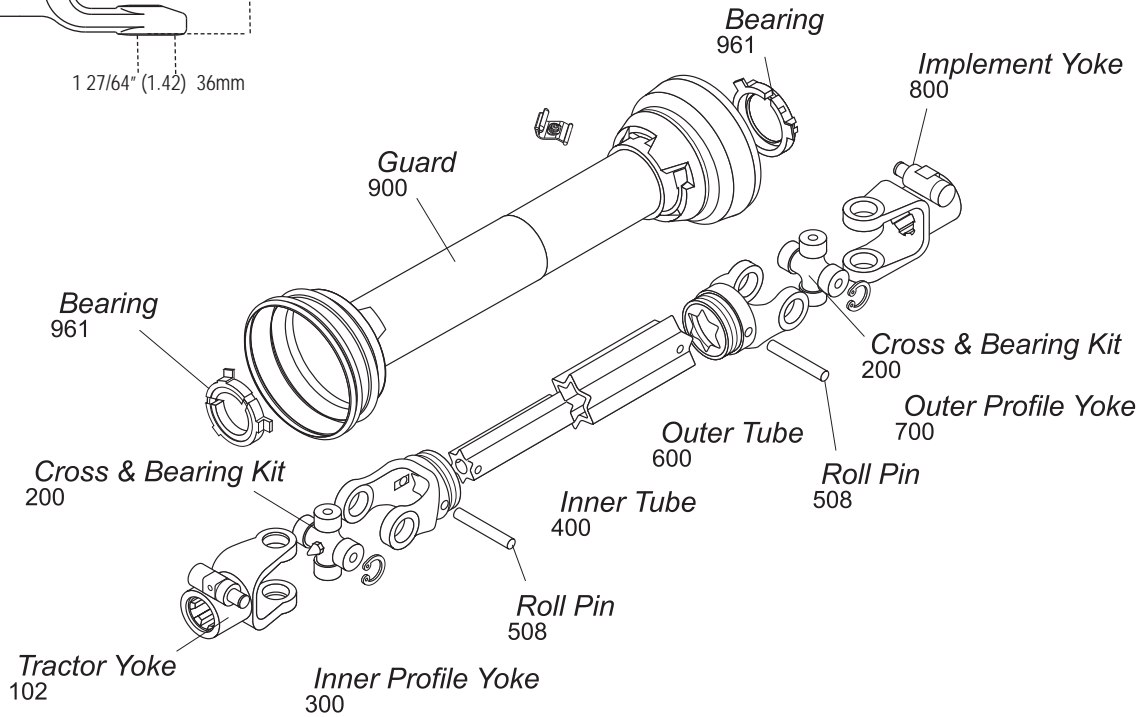
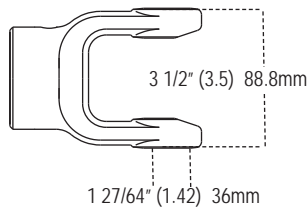


Stock Number	Overall Comp. Length Dim. "A"	Max. Running Length	Tractor Yoke	Implement Yoke
14007631	31"	39"	1 3/8" x 21 Spl. Safety Slide Lock	1 1/8" Hex Clamp
14007633	33"	41"	1 1/8" Hex Safety Slide Lock	1 1/8" Hex Clamp
14007635	35"	45"	1 3/8" x 21 Spl. Safety Slide Lock	1 1/8" Hex Clamp
14007640	40"	50"	1 3/8" x 6 Spl. OD	1 3/8" x 6 Spl. OD
14307645	45"	58"	1 3/8" x 6 Spl. OD	1 3/8" x 6 Spl. w/Overrunning Clutch
14007657	57"	77"	1 3/8" x 6 Spl.	1 3/8" x 6 Spl.

Interchanges with Walterscheid

2500 Series

AW36

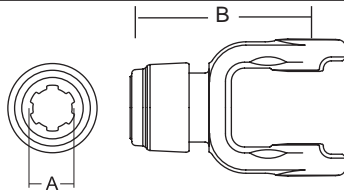


Tractor Yoke

Safety Slide Lock
Repair Kit —

*13004000
**13004020

Stock Number	Dim. "A" Bore	Dim. "B"	
		mm	in.
101-7906*	1 3/8" x 6 Spl.	138.0	5.43"
101-7920**	1 3/4" x 20 Spl.	141.0	5.55"
101-7921*	1 3/8" x 21 Spl.	138.0	5.43"

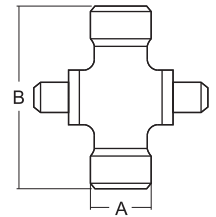


Cross & Bearing Kit

(R-Kit)
(Recommended 8 hr. grease interval)

Snap Ring Located In Yoke

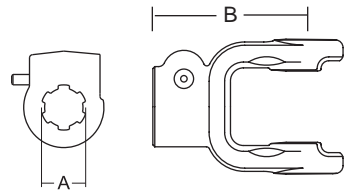
Stock Number	Dim. "A"		Dim. "B"	
	mm	in.	mm	in.
200-7989	36.0	1.42"	88.8	3.50"



Quick Disconnect
Repair Kit —

*13007138
**13007120

Stock Number	Dim. "A" Bore	Dim. "B"	
		mm	in.
102-7906*	1 3/8" x 6 Spl.	121.0	4.76"
102-7920**	1 3/4" x 20 Spl.	121.0	4.76"
102-7921*	1 3/8" x 21 Spl.	121.0	4.76"

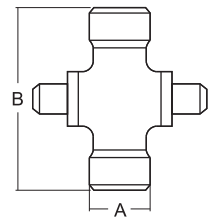


Extended Lubrication Cross & Bearing Kit

(E-Kit)
(Recommended 50 hr. grease interval)

Snap Ring Located In Yoke

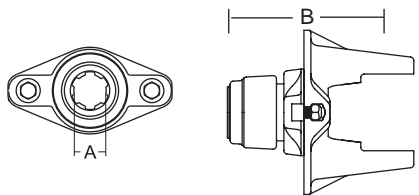
Stock Number	Dim. "A"		Dim. "B"	
	mm	in.	mm	in.
201-7989	36.0	1.42"	88.8	3.50"



Ball Shear
Repair Kit —

*10004000
**13004020

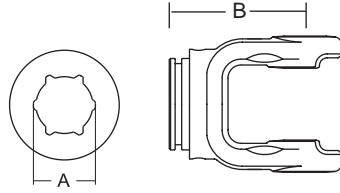
Stock Number	Dim. "A" Bore	Dim. "B"		Shear Bolt
		mm	in.	
104-7906*	1 3/8" x 6 Spl.	148.5	5.85"	3/8" - 16 Gr. 5
104-7920**	1 3/4" x 20 Spl.	161.8	6.37"	3/8" - 16 Gr. 5
104-7921*	1 3/8" x 21 Spl.	148.5	5.85"	3/8" - 16 Gr. 5



Replacement Shear Bolt Part No. 11-10445

2500 Series (cont'd.)

Inner Profile Yoke



With Bearing Groove
(Guard must rotate freely on yoke)

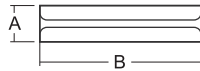
Stock Number	Dim. "A" Bore		Dim. "B"	
	mm	in.	mm	in.
300-7951	51.4	2.02"	106.0	4.17"

Inner Tube



Stock Number	Length	
	m	in.
400-7651	1.5	59.06"
404-7651	1.0	39.37"

Roll Pin



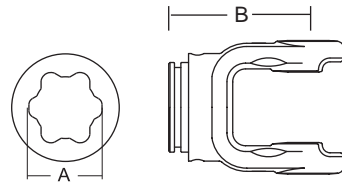
Stock Number	Dim. "A"		Dim. "B"	
	mm	in.	mm	in.
508-1090	10.0	.39"	90.0	3.54"

Outer Tube



Stock Number	Length	
	m	in.
600-7961	1.5	59.06"
604-7961	1.0	39.37"

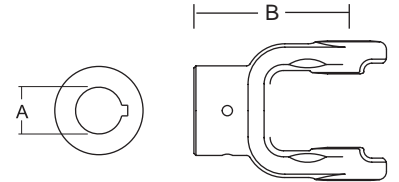
Outer Profile Yoke



With Bearing Groove
(Guard must rotate freely on yoke)

Stock Number	Dim. "A" Bore		Dim. "B"	
	mm	in.	mm	in.
700-7961	61.0	2.40"	111.0	4.37"

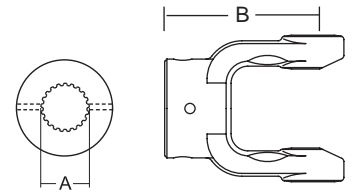
Implement Yoke



Round Bore
With Keyway & Set Screw

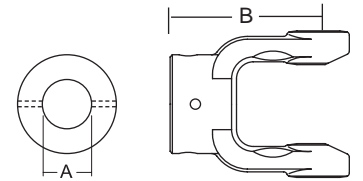
Stock Number	Dim. "A" Bore		Dim. "B"		Standard Keyway	
	mm	in.	mm	in.	mm	in.
800-7922	35.0	1.38"	118.0	4.65"	8.0	.31"
800-7924	38.1	1.50"	118.0	4.65"	9.5	.38"
800-7928	44.4	1.75"	118.0	4.65"	10.0	.38"
800-7935	35.0	1.38"	118.0	4.65"	10.0	.39"

Spline Bore
With Pin Hole



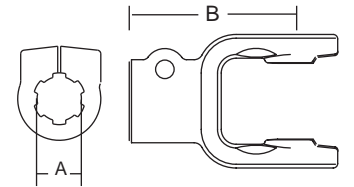
Stock Number	Dim. "A" Bore	Dim. "B"	
		mm	in.
801-7921	1 3/8" x 21 Spl.	110.0	4.33"

Shear Pin
With Pin Hole



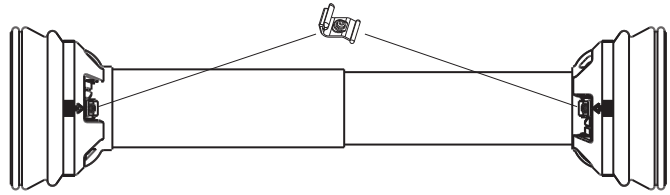
Stock Number	Dim. "A" Bore		Dim. "B"		Pinhole	
	mm	in.	mm	in.	mm	in.
802-7922	35.0	1.38"	117.6	4.63"	12.9	.50"
802-7924	38.1	1.50"	118.0	4.65"	12.9	.50"

Clamp Yoke



Stock Number	Dim. "A" Bore	Dim. "B"	
		mm	in.
807-7906	1 3/8" x 6 Spl.	121.0	4.76"
807-7918	1 3/4" x 6 Spl.	121.0	4.76"
807-7920	1 3/4" x 20 Spl.	121.0	4.76"
807-7921	1 3/8" x 21 Spl.	121.0	4.76"

Guard

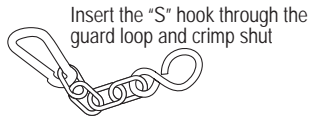


Order Bearings As Required

Stock Number	Overall Driveline Length	Bearing Kit (2-per kit)
902-3548	48"	961-3525
902-3560	60"	961-3525

Assembly instructions included with guard bearing kit
NOTE: Guards must rotate freely on yokes

Guard Chain Kit



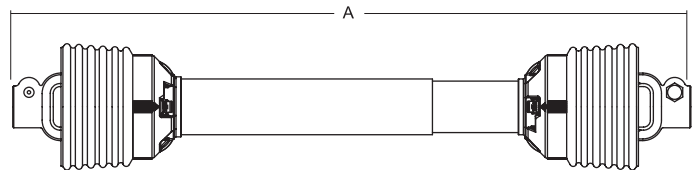
Part Number: 13006500 (2-per Kit)

Easy Lock™ Replacement Kit

Part Number: 13005000 (4-per Kit)



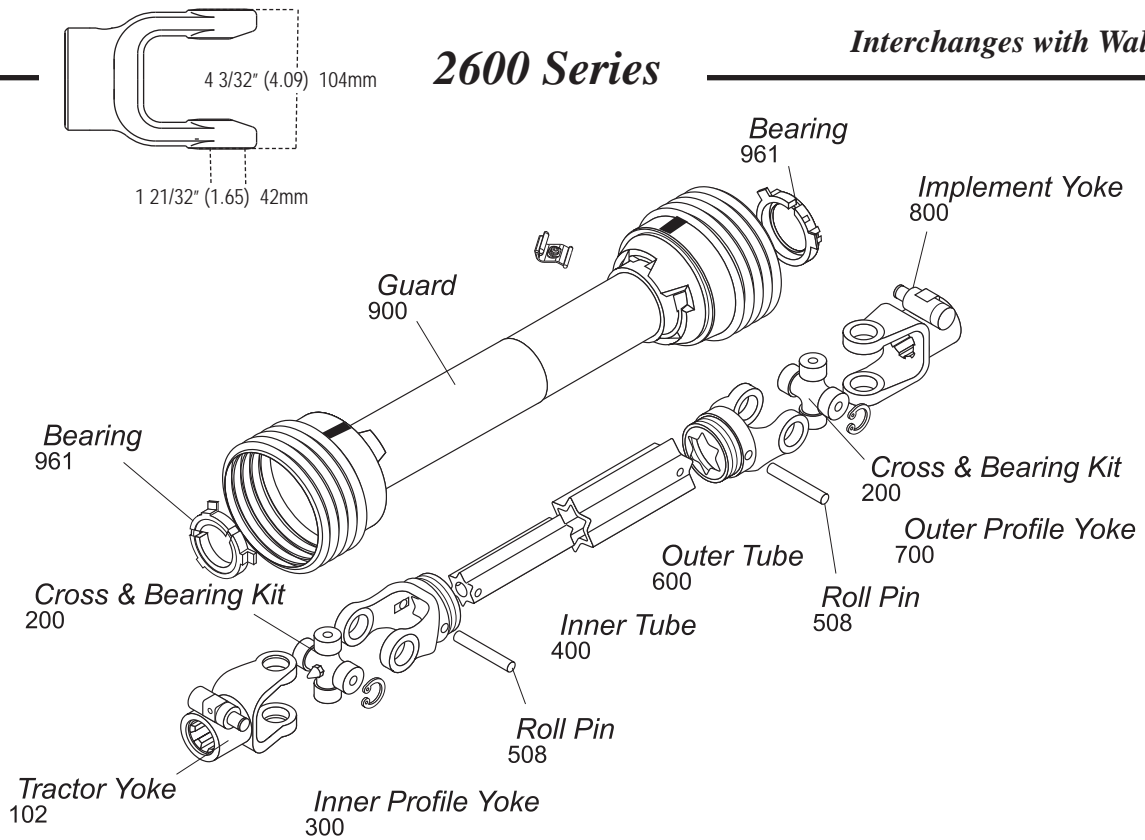
Drivelines



Stock Number	Overall Comp. Length Dim. "A"	Max. Running Length	Tractor Yoke	Implement Yoke
14007936	36"	47"	1 3/8" x 6 Spl. QD	1 3/8" x 6 Spl. QD
14007940	40"	51"	1 3/8" x 6 Spl. QD	1 3/8" x 6 Spl. QD
14007955	55"	73"	1 3/4" x 20 Spl. QD	1 3/8" x 21 Spl. w/Pinhole
14007957	57"	76"	1 3/8" x 6 Spl. QD	1 3/8" x 6 Spl. QD

2600 Series

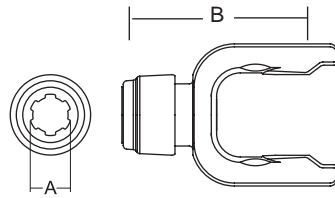
AW26



Tractor Yoke

Safety Slide Lock
Repair Kit —

*13004000
**13004020

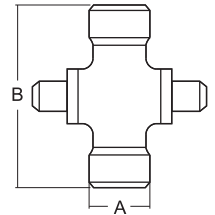


Stock Number	Dim. "A"	Dim. "B"	
	Bore	mm	in.
101-7006*	1 3/8" x 6 Spl.	150.0	5.91"
101-7020**	1 3/4" x 20 Spl.	150.0	5.91"
101-7021*	1 3/8" x 21 Spl.	150.0	5.91"

Cross & Bearing Kit

(R-Kit)
(Recommended 8 hr. grease interval)

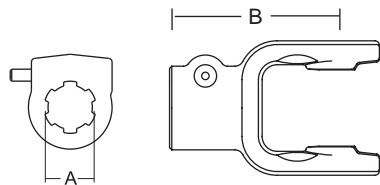
Snap Ring Located In Yoke



Stock Number	Dim. "A"		Dim. "B"	
	mm	in.	mm	in.
200-7004	42.0	1.65"	104.0	4.09"

Quick Disconnect
Repair Kit —

*13007138
**13007120



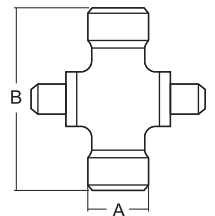
Stock Number	Dim. "A"	Dim. "B"	
	Bore	mm	in.
102-7006*	1 3/8" x 6 Spl.	131.0	5.15"
102-7020**	1 3/4" x 20 Spl.	131.0	5.15"
102-7021*	1 3/8" x 21 Spl.	131.0	5.15"

Extended Lubrication

Cross & Bearing Kit

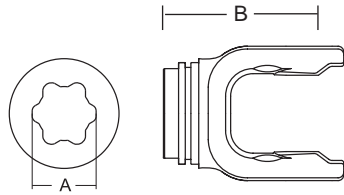
(E-Kit)
(Recommended 50 hr. grease interval)

Snap Ring Located In Yoke



Stock Number	Dim. "A"		Dim. "B"	
	mm	in.	mm	in.
201-7004	42.0	1.65"	104.0	4.09"

Inner Profile Yoke

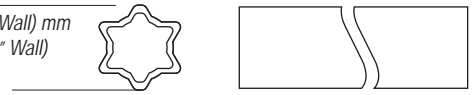


With Bearing Groove
(Guard must rotate freely on yoke)

Stock Number	Dim. "A"		Dim. "B"	
	mm	in.	mm	in.
300-7061	61.0	2.40"	130.0	5.12"

Outer Tube

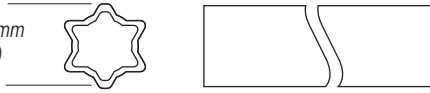
71.5 (4.9 Wall) mm
2.81" (.19" Wall)



Stock Number	Length	
	m	in.
600-7071	1.5	59.06"
604-7071	1.0	39.37"

Inner Tube

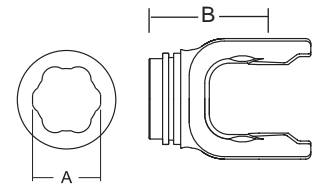
61.0 (4.3 Wall) mm
2.40" (.17" Wall)



Stock Number	Length	
	m	in.
600-7961	1.5	59.06"
604-7961	1.0	39.37"

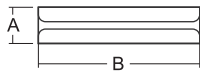
Outer Profile Yoke

With Bearing Groove
(Guard must rotate freely on yoke)



Stock Number	Dim. "A"		Dim. "B"	
	mm	in.	mm	in.
700-7071	71.7	2.82"	130.0	5.12"

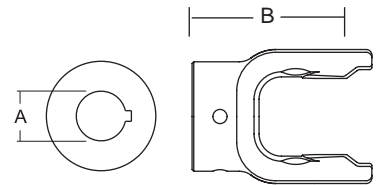
Roll Pin



Stock Number	Dim. "A"		Dim. "B"	
	mm	in.	mm	in.
508-1310	13.0	.50"	100.0	3.69"

Implement Yoke

Round Bore
With Keyway & Set Screw



Stock Number	Dim. "A" Bore		Dim. "B"		Standard Keyway	
	mm	in.	mm	in.	mm	in.
800-7024	38.1	1.50"	130.0	5.12"	9.5	.37"
800-7026	41.3	1.63"	130.0	5.12"	9.5	.37"
800-7028	44.5	1.75"	130.0	5.12"	9.5	.37"
800-7032	50.8	2.00"	130.0	5.12"	12.7	.50"

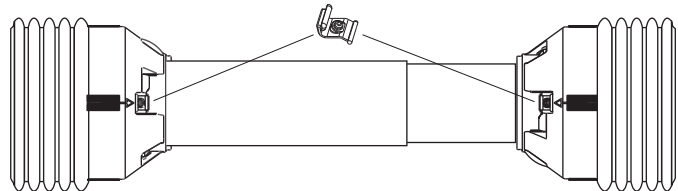
Easy Lock™ Replacement Kit

Part Number: 13005000 (4-per Kit)



Guard

Order Bearings As Required

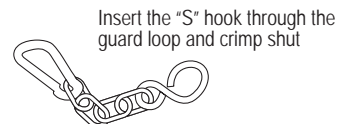


Stock Number	Overall Driveline Length	Bearing Kit (2-per kit)
900-4548	48"	961-4535
900-4560	60"	961-4535

Assembly instructions included with guard bearing kit
NOTE: Guards must rotate freely on yokes

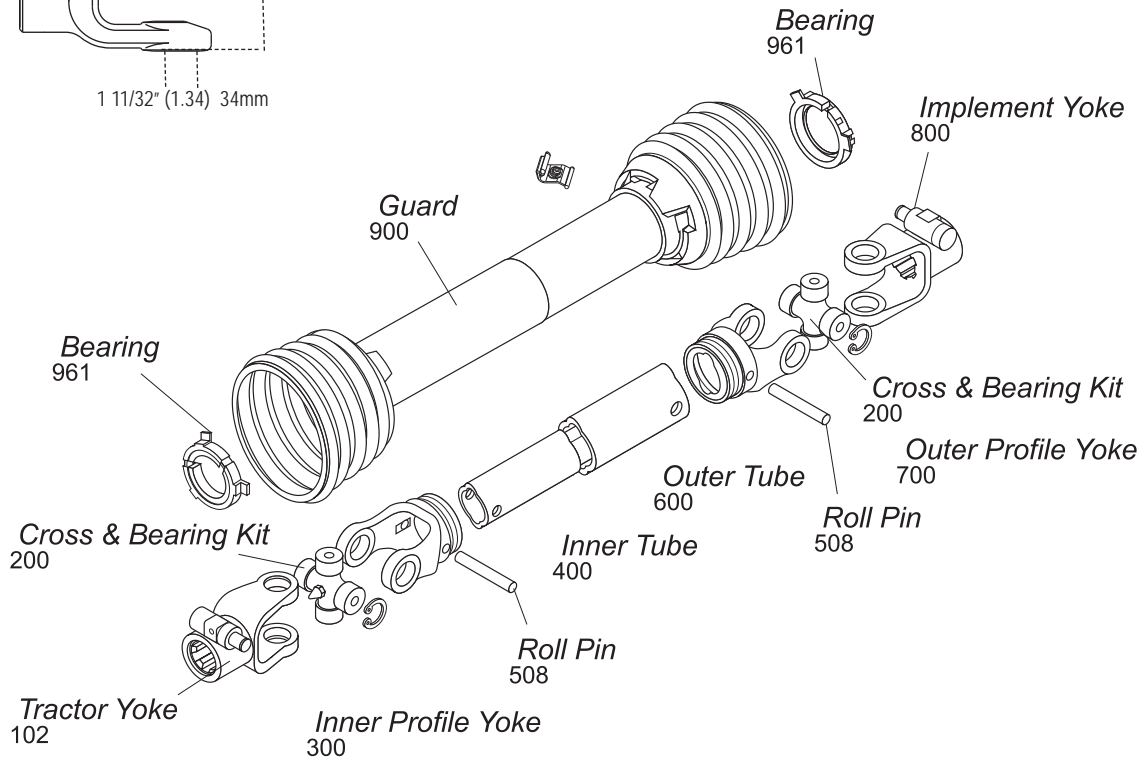
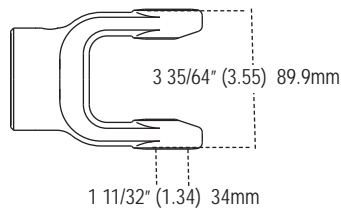
Guard Chain Kit

Part Number: 13006500 (2-per Kit)



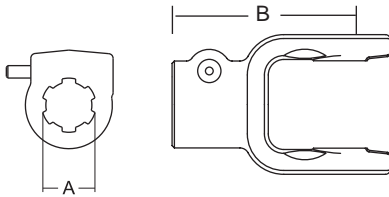
Insert the "S" hook through the guard loop and crimp shut

II Series



Tractor Yoke

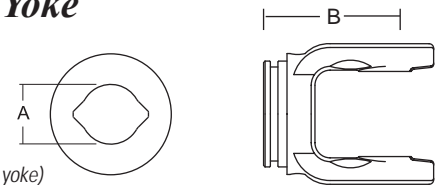
**Quick Disconnect
Repair Kit — *13007138**



Stock Number	Dim. "A" Bore		Dim. "B"	
	mm	in.	mm	in.
102-7806*	1 3/8"	6 Spl.	116.0	4.57"
102-7821*	1 3/8"	21 Spl.	116.0	4.57"

Inner Profile Yoke

*With Bearing Groove
(Guard must rotate freely on yoke)*

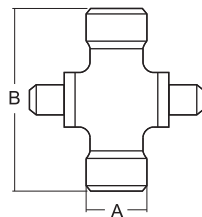


Stock Number	Dim. "A"		Dim. "B"	
	mm	in.	mm	in.
300-7839	39.5	1.56"	88.0	3.47"

**Cross & Bearing Kit
(R-Kit)**

(Recommended 8 hr. grease interval)

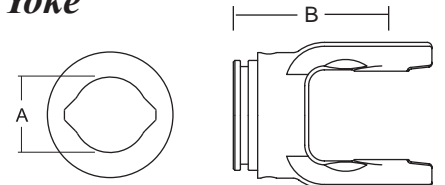
Snap Ring Located In Bushing



Stock Number	Dim. "A"		Dim. "B"	
	mm	in.	mm	in.
200-7890	34.0	1.34"	89.9	3.55"

Outer Profile Yoke

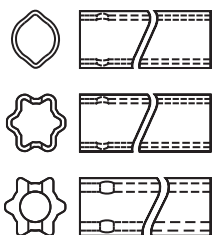
*With Bearing Groove
(Guard must rotate freely on yoke)*



Stock Number	Dim. "A"		Dim. "B"	
	mm	in.	mm	in.
700-7848	48.0	1.89"	102.0	4.02"

Profile Shafting and Tubing

GERMAN-STYLE SHAFTING & TUBING



Lemon & Star Profile

ITALIAN-STYLE SHAFTING & TUBING



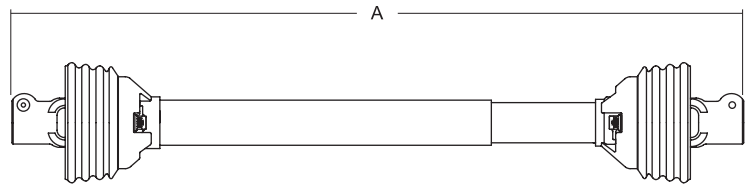
Tri-Lobe Profile

SERIES	STOCK NO.	LENGTH		OUTSIDE DIAMETER		WALL THICKNESS		USE AS	PROFILE
		M	IN.	M	IN.	MM	IN.		
ByPy 1	400-6126	1.5	59.06	26.5	1.024	3.4	.138	Inner	Tri-Lobe
ByPy 1	404-6126	1	39.37	26.5	1.024	3.4	.138	Inner	Tri-Lobe
ByPy 1	600-6133	1.5	59.06	32.5	1.299	2.6	.102	Outer	Tri-Lobe
ByPy 1	604-6133	1	39.37	32.5	1.299	2.6	.102	Outer	Tri-Lobe
ByPy 2	400-6229	1.5	59.06	29	1.142	4.1	.134	Inner	Tri-Lobe
ByPy 2	404-6229	1	39.37	29	1.142	4.1	.134	Inner	Tri-Lobe
ByPy 2	600-6236	1.5	59.06	36	1.417	3.2	.134	Outer	Tri-Lobe
ByPy 2	604-6236	1	39.37	36	1.417	3.2	.134	Outer	Tri-Lobe
ByPy 3	600-6236	1.5	59.06	36	1.417	3.2	.134	Inner	Tri-Lobe
ByPy 3	604-6236	1	39.37	36	1.417	3.2	.134	Inner	Tri-Lobe
ByPy 3 & 4	600-6343	1.5	59.06	43.5	1.713	3.4	.138	Outer	Tri-Lobe
ByPy 3 & 4	604-6343	1	39.37	43.5	1.713	3.4	.138	Outer	Tri-Lobe
ByPy 4	400-6436	1.5	59.06	36	1.417	3.9	.157	Inner	Tri-Lobe
ByPy 4	404-6436	1	39.37	36	1.417	3.9	.157	Inner	Tri-Lobe
ByPy 5 & 6	400-6545	1.5	59.06	45	1.77	3.9	.150	Inner	Tri-Lobe
ByPy 5 & 6	404-6545	1	39.37	45	1.77	3.9	.150	Inner	Tri-Lobe
ByPy 5	600-6552	1.5	59.06	51.5	2.03	3	.120	Outer	Tri-Lobe
ByPy 5	604-6552	1	39.37	51.5	2.03	3	.120	Outer	Tri-Lobe
ByPy 6 & 7N	600-6654	1.5	59.06	54	2.13	4.5	.180	Outer	Tri-Lobe
ByPy 6 & 7N	604-6654	1	39.37	54	2.13	4.5	.180	Outer	Tri-Lobe
ByPy 7N	400-6745	1.5	59.06	45	1.77	5.4	.210	Inner	Tri-Lobe
ByPy 7N	404-6745	1	39.37	45	1.77	5.4	.210	Inner	Tri-Lobe
ByPy 8	600-6654	1.5	59.06	54	2.13	4.5	.180	Inner	Tri-Lobe
ByPy 8	604-6654	1	39.37	54	2.13	4.5	.180	Inner	Tri-Lobe
ByPy 8 & 9	600-6863	1.5	59.06	63	2.48	4.1	.161	Outer	Tri-Lobe
ByPy 8 & 9	604-6863	1	39.37	63	2.48	4.1	.161	Outer	Tri-Lobe
ByPy 9	400-6954	1.5	59.06	54	2.13	4.9	.190	Inner	Tri-Lobe
ByPy 9	404-6954	1	39.37	54	2.13	4.9	.190	Inner	Tri-Lobe
W/S 2100	400-7123	1.5	59.06	23.5	0.93	SOLID		Inner	Lemon
W/S 2100	404-7123	1	39.37	23.5	0.93			Inner	Lemon
W/S 2100	600-7130	1.5	59.06	30	1.19	2.9	.114	Outer	Lemon
W/S 2100	604-7130	1	39.37	30	1.19	2.9	.114	Outer	Lemon
W/S I, 2200 & 2300	400-7234	1.5	59.06	34.5	1.36	4	.160	Inner	Lemon
W/S I, 2200 & 2300	404-7234	1	39.37	34.5	1.36	4	.160	Inner	Lemon
W/S I, 2200 & 2300	600-7241	1.5	59.06	41	1.61	2.9	.114	Outer	Lemon
W/S I, 2200 & 2300	604-7241	1	39.37	41	1.61	2.9	.110	Outer	Lemon
W/S 2400 & 220/720	400-7539	1.5	59.06	39.5	1.56	4.5	.180	Inner	Lemon
W/S 2400 & 220/720	404-7539	1	39.37	39.5	1.56	4.5	.180	Inner	Lemon
W/S 2400 & 220/720	600-7548	1.5	59.06	48	1.89	3.8	.150	Outer	Lemon
W/S 2400 & 220/720	604-7548	1	39.37	48	1.89	3.8	.150	Outer	Lemon
W/S 2400 & 2500	400-7651	1.5	59.06	51	2.07	6	.240	Inner	Star
W/S 2400 & 2500	404-7651	1	39.37	51	2.07	6	.240	Inner	Star
W/S 2400 & 2500	600-7961	1.5	59.06	61	2.4	4.3	.170	Outer	Star
W/S 2400 & 2500	604-7961	1	39.37	61	2.4	4.3	.170	Outer	Star
W/S 2600	600-7961	1.5	59.06	61	2.4	4.3	.170	Inner	Star
W/S 2600	604-7961	1	39.37	61	2.4	4.3	.170	Inner	Star
W/S 2600	600-7071	1.5	59.06	71.5	2.81	4.9	.190	Outer	Star
W/S 2600	604-7071	1	39.37	71.5	2.81	4.9	.190	Outer	Star

Metric Replacement Drivelines

Interchanges with Bondioli & Pavesi and Walterscheid

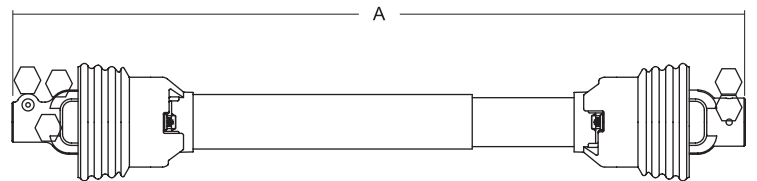
All Purpose Drivelines



Stock Number	Series	Overall Comp. Length Dim. "A"	Max. Running Length	Tractor Yoke	Implement Yoke
14006137	BYPY 1	37"	53"	1 3/8" x 6 Spl. QD	1 3/8" x 6 Spl. QD
14006247	BYPY 2	47"	70"	1 3/8" x 6 Spl. QD	1 3/8" x 6 Spl. QD
14006438	BYPY 4	38"	54"	1 3/8" x 6 Spl. QD	1 3/8" x 6 Spl. QD
14006455	BYPY 4	55"	83"	1 3/8" x 6 Spl. QD	1 3/8" x 6 Spl. QD
14006448	BYPY 4	48"	70"	1 3/8" x 6 Spl. QD	1 3/8" x 6 Spl. QD
14006543	BYPY 5	43"	60"	1 3/8" x 6 Spl. QD	1 3/8" x 6 Spl. QD
14006555	BYPY 5	55"	83"	1 3/8" x 6 Spl. QD	1 3/8" x 6 Spl. QD
14006642	BYPY 6	42"	57"	1 3/8" x 6 Spl. QD	1 3/8" x 6 Spl. QD
14006644	BYPY 6	44"	60"	1 3/8" x 6 Spl. QD	1 3/8" x 6 Spl. QD
14006655	BYPY 6	55"	76"	1 3/8" x 6 Spl. QD	1 3/8" x 6 Spl. QD
14006657	BYPY 6	57"	83"	1 3/8" x 6 Spl. QD	1 3/8" x 6 Spl. QD
14006846	BYPY 8	46"	63"	1 3/8" x 6 Spl. QD	1 3/8" x 6 Spl. QD
14006857	BYPY 8	57"	77"	1 3/8" x 6 Spl. QD	1 3/8" x 6 Spl. QD
14016542	BYPY 5	42"	60"	1 3/8" x 6 Spl. QD	1 3/8" x 6 Spl. QD
14016666	BYPY 6	66"	99"	1 3/8" x 21 Spl. QD	1 1/2" Rd.
14046148	BYPY 1	48"	70"	1 3/8" x 6 Spl. QD	*
14046248	BYPY 2	48"	70"	1 3/8" x 6 Spl. QD	*
14046260	BYPY 2	60"	89"	1 3/8" x 6 Spl. QD	*
14046348	BYPY 3	48"	70"	1 3/8" x 6 Spl. QD	*
14046360	BYPY 3	60"	90"	1 3/8" x 6 Spl. QD	*
14046448	BYPY 4	48"	70"	1 3/8" x 6 Spl. QD	*
14046460	BYPY 4	60"	89"	1 3/8" x 6 Spl. QD	*
14046548	BYPY 5	48"	70"	1 3/8" x 6 Spl. QD	*
14046560	BYPY 5	60"	89"	1 3/8" x 6 Spl. QD	*
14046648	BYPY 6	48"	70"	1 3/8" x 6 Spl. QD	*
14046660	BYPY 6	60"	89"	1 3/8" x 6 Spl. QD	*
14046748	BYPY 7	48"	70"	1 3/8" x 6 Spl. QD	*
14046760	BYPY 7	60"	83"	1 3/8" x 6 Spl. QD	*
14046848	BYPY 8	48"	70"	1 3/8" x 6 Spl. QD	*
14046860	BYPY 8	60"	86"	1 3/8" x 6 Spl. QD	*
14046948	BYPY 9	48"	70"	1 3/8" x 6 Spl. QD	*
14046960	BYPY 9	60"	86"	1 3/8" x 6 Spl. QD	*
14066644	BYPY 6	44"	60"	1 3/8" x 21 Spl. QD	1 3/8" x 21 Spl. QD
14066846	BYPY 8	46"	63"	1 3/8" x 21 Spl. QD	1 3/8" x 21 Spl. QD

* Drivelines are furnished without Cross & Bearing Kit and Implement Yoke. Select kit and yoke as required.

Catfish Pond Driveline

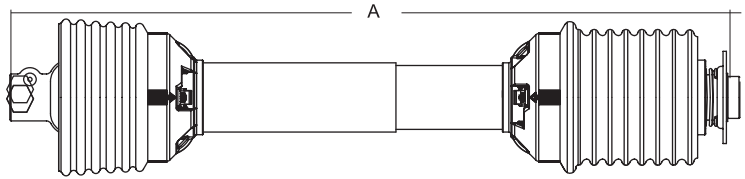


Stock Number	Series	Overall Comp. Length Dim. "A"	Max. Running Length	Tractor Yoke	Implement Yoke
14006424	BYPY 4	48"	70"	1 3/8" x 6 Spl. QD	1 1/2" Rd
14006524	BYPY 5	48"	70"	1 3/8" x 6 Spl. QD	1 1/2" Rd
14006624	BYPY 6	48"	70"	1 3/8" x 6 Spl. QD	1 1/2" Rd
14016524	BYPY 5	48"	70"	1 3/8" x 21 Spl. QD	1 1/2" Rd
14016624	BYPY 6	48"	70"	1 3/8" x 21 Spl. QD	1 1/2" Rd

Metric Replacement Driveline

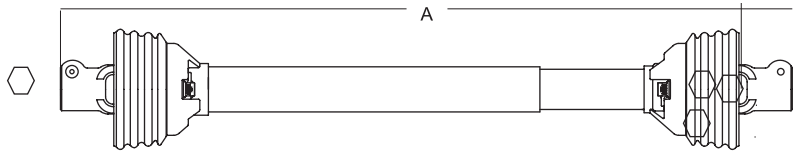
Interchanges with Bondioli & Pavesi and Walterscheid

Disc Mower



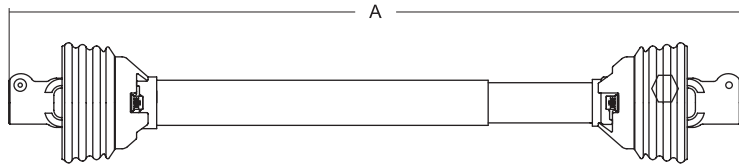
Stock Number	Series	Overall Comp. Length Dim. "A"	Max. Running Length	Tractor Yoke	Implement Yoke
14306538	BYPY 5	38"	55"	1 3/8" × 6 Spl. QD	1 3/8" × 6 Spl. QD w/Overrunning Clutch
14306639	BYPY 6	39"	52"	1 3/8" × 6 Spl. QD	1 3/8" × 6 Spl. QD w/Overrunning Clutch
14307645	W/S 2400	45"	58"	1 3/8" × 6 Spl. QD	1 3/8" × 6 Spl. QD w/Overrunning Clutch

Fertilizer Spreader



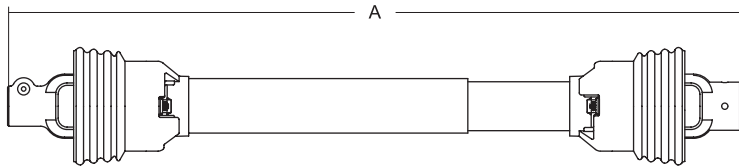
Stock Number	Series	Overall Comp. Length Dim. "A"	Max. Running Length	Tractor Yoke	Implement Yoke
14006127	BYPY 1	27"	37"	1 3/8" × 6 Spl. QD	1 3/8" × 6 Spl. QD
14006135	BYPY 1	35"	50"	1 3/8" × 6 Spl. QD	1 3/8" × 6 Spl. QD

Finishing Mower



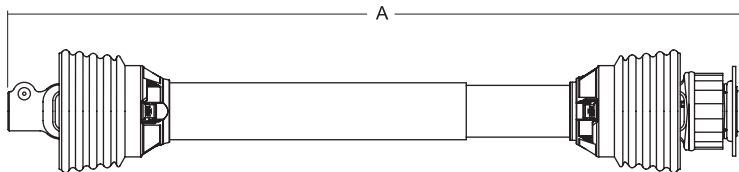
Stock Number	Series	Overall Comp. Length Dim. "A"	Max. Running Length	Tractor Yoke	Implement Yoke
14006340	BYPY 3	40"	57"	1 3/8" × 6 Spl. QD	1 3/8" × 6 Spl. QD
14006446	BYPY 4	46"	67"	1 3/8" × 6 Spl. QD	1 3/8" × 6 Spl. QD
14006637	BYPY 6	37"	50"	1 3/8" × 6 Spl. QD	1 3/8" × 6 Spl. QD

Hammer Mill



Stock Number	Series	Overall Comp. Length Dim. "A"	Max. Running Length	Tractor Yoke	Implement Yoke
14006628	BYPY 6	57"	83"	1 3/8" × 6 Spl. QD	1 3/4" Rd.
14006748	BYPY 7	48"	70"	1 3/8" × 6 Spl. QD	1 3/4" Rd.

Hay Tedder



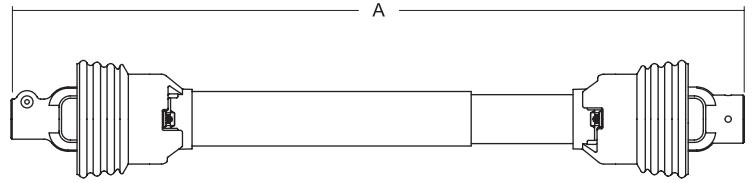
Stock Number	Series	Type	Overall Comp. Length Dim. "A"	Max. Running Length	Tractor Yoke	Implement Yoke
14206252	BYPY 2*	2-Rotor	52"	77"	1 3/8" × 6 Spl. QD	1 3/8" × 6 Spl. Radial Pin Clutch
14206454	BYPY 4**	4-Rotor	54"	79"	1 3/8" × 6 Spl. QD	1 3/8" × 6 Spl. Radial Pin Clutch

*Light Duty
**Heavy Duty

Metric Replacement Drivelines

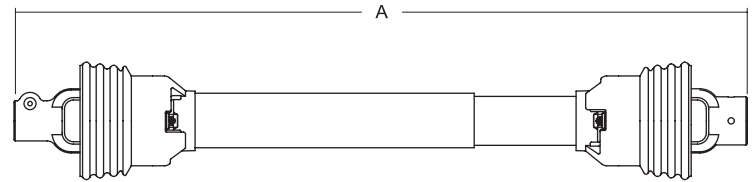
Interchanges with Bondioli & Pavesi and Walterscheid

Peanut Harvester Non - CV



Stock Number	Series	Overall Comp. Length Dim. "A"	Max. Running Length	Tractor Yoke	Implement Yoke
14007955 (Star)	W/S 2500	55"	73"	1 3/4" × 20 Spl. QD	1 3/8" × 21 Spl. w/Pinhole

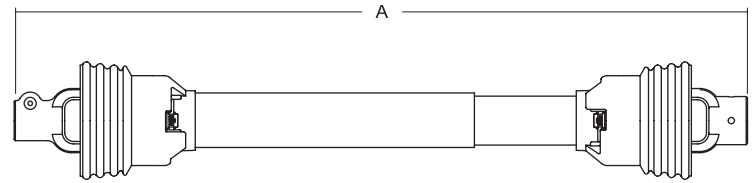
Post Hole Digger



Stock Number	Series	Overall Comp. Length Dim. "A"	Max. Running Length	Tractor Yoke	Implement Yoke
14006252	BYPY 2*	52"	79"	1 3/8" × 6 Spl. QD	1 1/4" Rd w/Pinhole
14006453	BYPY 4**	53"	79"	1 3/8" × 6 Spl. QD	1 1/4" Rd w/Pinhole

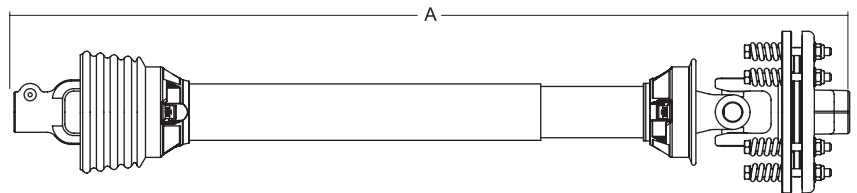
*Light Duty
**Heavy Duty

Rotary Cutter



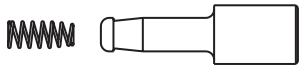
Stock Number	Series	Type	Overall Comp. Length Dim. "A"	Max. Running Length	Tractor Yoke	Implement Yoke
14006251	BYPY 2	Pull (Towed)	51"	76"	1 3/8" × 6 Spl. QD	1 3/8" Rd w/Pinhole
14006432	BYPY 4	4 ft. Lift (3-pt. Hitch)	32"	43"	1 3/8" × 6 Spl. QD	1 3/8" Rd w/ Pinhole
14006436	BYPY 4	5 ft. Lift (3-pt. Hitch)	36"	50"	1 3/8" × 6 Spl. QD	1 3/8" Rd w/ Pinhole
14006442	BYPY 4	6 ft. Lift (3-pt. Hitch)	42"	60"	1 3/8" × 6 Spl. QD	1 3/8" Rd w/ Pinhole
14006451	BYPY 4	Pull (Towed)	51"	76"	1 3/8" × 6 Spl. QD	1 3/8" Rd w/ Pinhole
14006542	BYPY 5	6 ft. Lift (3-pt. Hitch)	42"	60"	1 3/8" × 6 Spl. QD	1 3/8" Rd w/ Pinhole
14006546	BYPY 5	6 ft. Heavy Duty	46"	67"	1 3/8" × 6 Spl. QD	1 3/8" × 6 Spl. QD
14006551	BYPY 5	6 ft. Lift (3-pt. Hitch)	51"	76"	1 3/8" × 6 Spl. QD	1 3/8" Rd.
14006652	BYPY 6	7 ft. Lift (3-pt. Hitch)	52"	76"	1 3/8" × 6 Spl. QD	1 3/8" Rd w/ Pinhole

Rotary Cutter/Tiller



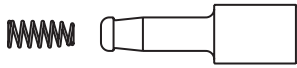
Stock Number	Series	Type	Overall Comp. Length Dim. "A"	Max. Running Length	Tractor Yoke	Implement Yoke
14106438	BYPY 4	Pull (Towed)	38"	52"	1 3/8" × 6 Spl. QD	1 3/8" × 6 Spl. w/Friction Clutch
14106546	BYPY 5	Pull (Towed)	46"	65"	1 3/8" × 6 Spl. QD	1 3/8" × 6 Spl. w/Friction Clutch
14106654	BYPY 6	7 ft. Lift (3-pt. Hitch)	54"	78"	1 3/8" × 6 Spl. QD	1 3/8" × 6 Spl. w/Friction Clutch
14106233	BYPY 2	Pull (Towed)	33"	58"	1 3/8" × 6 Spl. QD	1 3/8" × 6 Spl. w/Friction Clutch
14106436	BYPY 4	Pull (Towed)	36"	48"	1 3/8" × 6 Spl. QD	1 3/8" × 6 Spl. w/Friction Clutch
14106660	BYPY 6	7 ft. Lift (3-pt. Hitch)	60"	89"	1 3/8" × 6 Spl. QD	1 3/4" × 20 Spl. w/Friction Clutch
14106661	BYPY 6	7 ft. Lift (3-pt. Hitch)	61"	92"	1 3/4" × 20 Spl. QD	1 3/4" × 20 Spl. w/Friction Clutch

Q.D. Repair Kit



Stock No. 13006121

Repair Kit for 1 3/8" x 6 Spl. & 1 3/8" x 21 Spl.
Bondioli & Pavesi Series 1,2,3,4,5,6,7N, 8 and 9



Stock No. 13006720

Repair Kit for 7N Series
1 3/4" x 20 Spl.



Stock No. 13007120

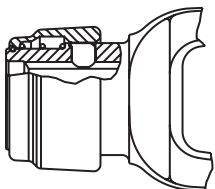
Repair Kit for 1 3/4" x 20 Spl.
All Walterscheid Series
Spring Internal to Yoke



Stock No. 13007138

Repair Kit for 1 3/8" x 6 Spl. & 1 3/8" x 21 Spl.
for all Walterscheid Series

Locking Device Repair Kit



***Auto-Lok/Safety Slide Lock**

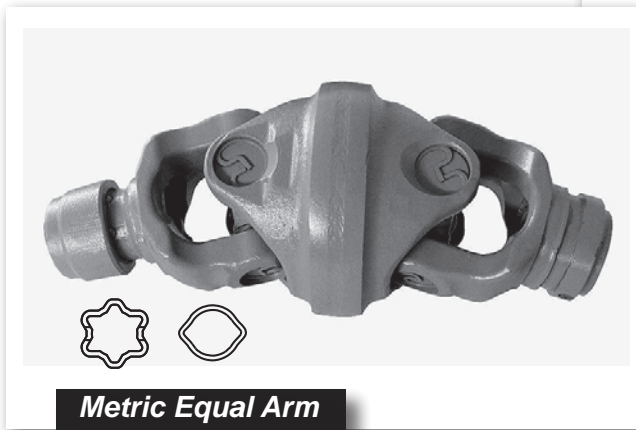
Stock No. 13004000

Repair Kit for Weasler Auto-Lok and
Safety Slide Lock
6 Spline & 21 Spline

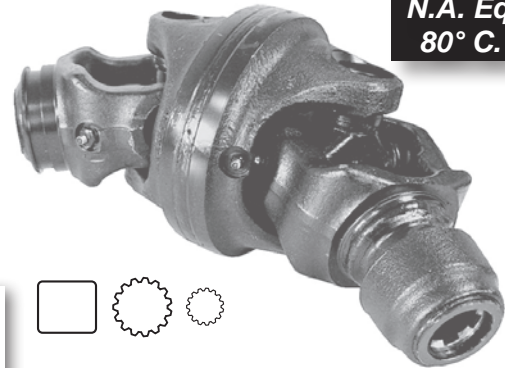
* This repair kit contains both balls & pawls. When repairing the "Safety Slide Lock" use the pawls only and discard the balls.
When repairing the "Auto-Lok" use both the balls and the pawls.

WORLD WIDE 80° CONSTANT VELOCITY

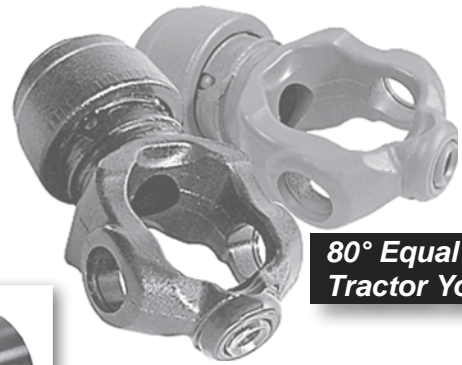
- LIGHT WEIGHT AND COMPACT DESIGN FOR HANDLING EASE
- METRIC NOW HAS SEALED CENTER HOUSING WITH NORTH AMERICAN-STYLE BALL AND SOCKET SYSTEM



**Metric Equal Arm
80° C.V. Joint**



**N.A. Equal Arm
80° C.V. Joint**



**80° Equal Arm
Tractor Yokes**



**Bushing Lube
Cross Kits**



Easy Lock Guarding



**Metric
Old-Style**

**Metric & Domestic
New-Style**

- SINGLE GUARD POSITION WILL ACCESS ALL GREASE ZERK LOCATIONS ON C.V.
- GUARD SYSTEMS ARE CE AND ISO COMPLIANT
- ARTICULATED GUARD SYSTEM PROVIDES FULL COVERAGE AT MAXIMUM ANGLE
- METRIC GUARD IS NOW UPGRADED TO THE PATENTED NORTH AMERICAN AND USER-FRIENDLY EASY LOCK SYSTEM

Higher Value - Smarter Solutions