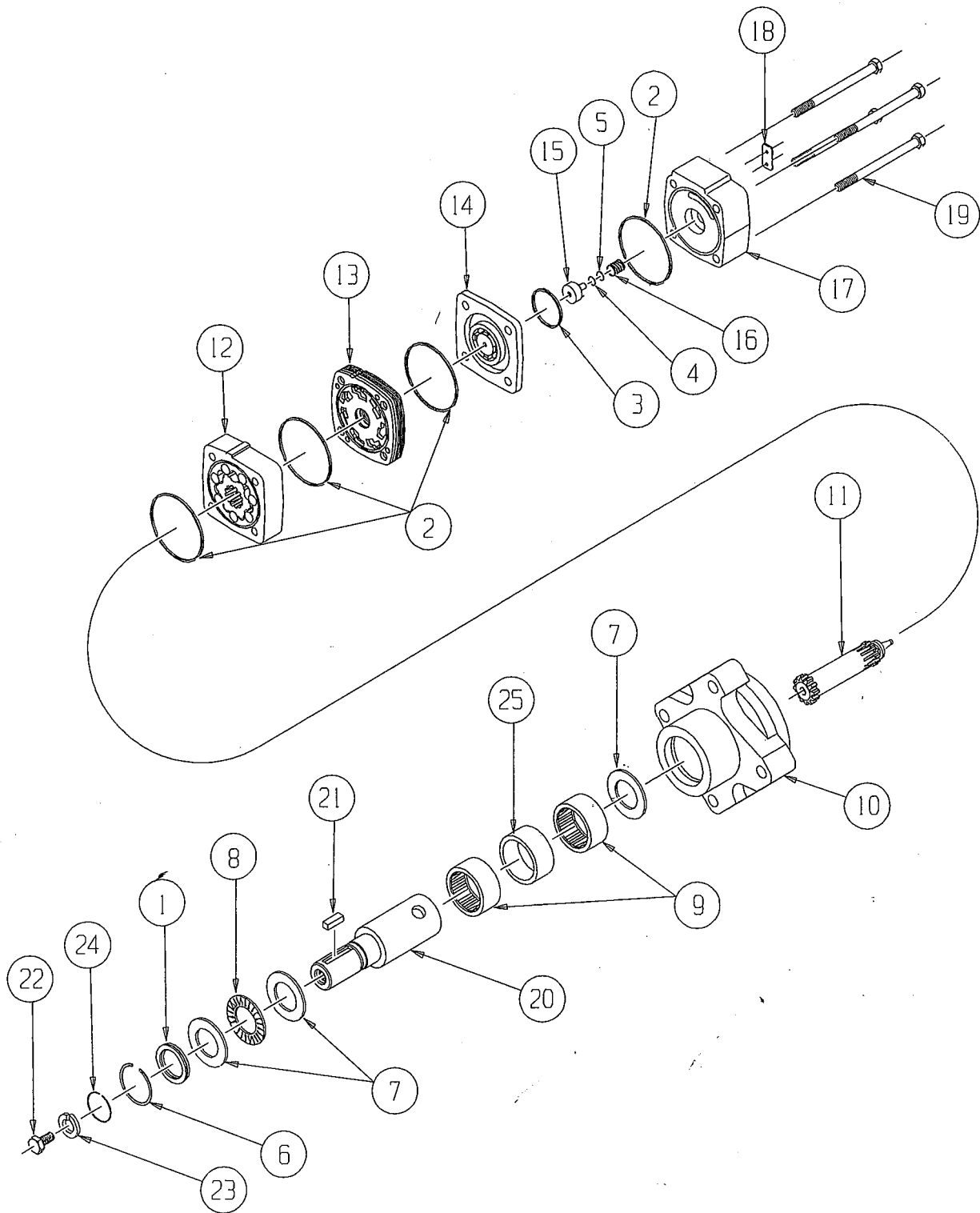


HB (320) Series



HB (320) SERIES MOTOR COMPONENTS

SEAL KIT 300333700

| DESCRIPTION | EXP. VIEW ITEM # | KIT |
|--------------------|------------------|---|
| DUST SEAL | 1 | ITEMS # 1-5 INCLUDED IN SEAL KIT 300333700 |
| BODY SEALS (4) | 2 | |
| COMMUTATOR SEAL | 3 | |
| O-RING SEAL | 4 | |
| TEFLON BACKUP SEAL | 5 | |

MISCELLANEOUS KITS

| DESCRIPTION | EXP. VIEW ITEM # | KIT |
|----------------------------|------------------|------------|
| SNAP RING | 6 | 300018073 |
| THRUST WASHER | 7 | 300018054 |
| THRUST BEARING | 8 | 300018052 |
| HOUSING BEARING | 9 | 300018053 |
| BEARING SPACER | 25 | 300018096 |
| MANIFOLD | 13 | 300015008 |
| COMMUTATOR ASSEMBLY | 14 | 300012013 |
| MIDMOUNT COMMUTATOR ASMBLY | NOT SHOWN | 300012011 |
| ENDCOVER PISTON | 15 | 300018056 |
| PISTON SPRING | 16 | 300018059 |
| PORT PLUG ("???AB" OPTION) | NOT SHOWN | 500018186 |
| 1000 PSI RELIEF VALVE | NOT SHOWN | 500018228 |
| 2000 PSI RELIEF VALVE | NOT SHOWN | 500018231 |
| 3000 PSI RELIEF VALVE | NOT SHOWN | 500018221 |
| 1.00-20 UNEF SLOTTED NUT | NOT SHOWN | 500449304 |
| 1.00-20 UNEF SOLID NUT | NOT SHOWN | 500449303 |
| 1.00-20 UNEF LOCK NUT | NOT SHOWN | 300339303P |

ROTORS, DRIVE LINKS AND BOLTS

WHEN CHANGING MOTOR DISPLACEMENTS, A MATCHING ROTOR AND BOLT SET KIT MUST BE ORDERED. A NEW DRIVE LINK KIT MAY BE NECESSARY.

| EXPLODED VIEW ITEM # | 12 | 12 | 11 | 19 | 19 |
|----------------------|--------------------|--------------------|----------------|--------------|--|
| DISPLACEMENT | STANDARD ROTOR KIT | FREETURN ROTOR KIT | DRIVE LINK KIT | BOLT SET KIT | BOLT SET KIT FOR ENDCOVERS WITH OFFSET PORTS |
| 050 | 300332003 | 300332003F | 300014028 | 300334003 | 300334003L |
| 080 | 300332004 | 300332004F | 300014028 | 300334004 | 300334004L |
| 090 | 300332005 | 300332005F | 300014028 | 300334005 | 300334005L |
| 110 | 300332006 | 300332006F | 300014029 | 300334006 | 300334006L |
| 125 | 300332008 | 300332008F | 300014029 | 300334008 | 300334008L |
| 160 | 300332010 | 300332010F | 300014030 | 300334010 | 300334010L |
| 200 | 300332012 | 300332012F | 300014030 | 300334012 | 300334012L |
| 250 | 300332014 | 300332014F | 300014027 | 300334014 | 300334014L |
| 300 | 300332018 | 300332018F | 300014027 | 300334018 | 300334018L |
| 320 | 300332020 | 300332020F | 300014031 | 300334024 | 300334024L |
| 400 | 300332024 | 300332024F | 300014031 | 300334024 | 300334024L |

HOUSING KITS

(EXPLODED VIEW ITEM #10)

HOUSING KITS INCLUDE THE FRONT AND REAR BEARINGS (#9), THRUST WASHER (#7), AND BEARING SPACER (#25) INSTALLED IN THE HOUSING.

| DESCRIPTION | HOUSING KIT |
|---|-------------|
| #W2 & W8- WHEEL MOUNT | 300130007 |
| #K2 & K8- WHEEL MOUNT WITH BRAKE MOUNT | 300130011 |
| #F2, F8, M2 & M8- 4-HOLE SQUARE MOUNT W/WO MIDMOUNT | 300130015 |

SHAFTS AND RELATED COMPONENTS KITS

SHAFT KITS COME WITH RELATED SHAFT COMPONENTS (i.e. keys, nuts, etc.)

TO ORDER INDIVIDUAL SHAFT COMPONENTS (i.e. keys, nuts, bolts, washers or wire rings) USE THE KIT NUMBER FOR EACH INDIVIDUAL PART.

| EXPLODED VIEW ITEM # | 20 | 21 | NOT SHOWN | 22 | 23 | 24 |
|----------------------|-----------|-----------|---------------------------------|-----------|------------|---------------|
| DESCRIPTION | SHAFT KIT | KEY KIT | NUT KIT | BOLT KIT | WASHER KIT | WIRE RING KIT |
| #01- 13 TOOTH SPLINE | 300110050 | --- | --- | --- | --- | --- |
| #02- 6-B SPLINE | 300110052 | --- | --- | --- | --- | --- |
| #22- 1-1/4" TAPERED | 300110053 | 300339101 | --- | --- | --- | --- |
| #20- 1-1/4" STRAIGHT | 300110054 | 300339106 | SEE MISC. KITS LIST ABOVE | 300339301 | 300339302 | 500449201 |
| #23- 14 TOOTH SPLINE | 300110055 | --- | --- | --- | --- | 500449201 |
| #10- 1" STRAIGHT | 300110056 | 300339100 | --- | --- | --- | --- |
| #12- | 300110057 | 300339104 | --- | --- | --- | --- |
| #21- 32MM STRAIGHT | 300110059 | 300339103 | --- | --- | --- | 500449201 |

ENDCOVER KITS

(EXPLODED VIEW ITEM #17)

ENDCOVER KITS COME ASSEMBLED WITH EXPLODED VIEW ITEMS # 4, 5, 15 & 16.

TO ORDER A RELIEF VALVE FOR THE VALVE CAVITY ENDCOVERS, SEE THE MISCELLANEOUS KITS LISTING ABOVE FOR RELIEF VALVE KIT #S.

| DESCRIPTION | STANDARD ENDCOVER | VALVE CAVITY ENDCOVER KIT | INTERNAL DRAIN ENDCOVER KIT | VALVE CAVITY & INTERNAL DRAIN ENDCOVER KIT |
|--------------------------------------|-------------------|---------------------------|-----------------------------|--|
| #5- 9/16" O-RING SIDE PORTS | 300160000 | 300160000R | 300160000D | --- |
| #6- 1-1/16" O-RING SIDE PORTS | 300160001 | --- | 300160001D | --- |
| #7- 1/2" BSP.F SIDE PORTS | 300160002 | --- | 300160002D | --- |
| #2- 1/2" BSP.F REAR PORTS | 300160003 | --- | 300160003D | 300160003DR |
| #9- 3/8" BSP.F SIDE PORTS | 300160004 | --- | 300160004D | --- |
| #1- 7/8" O-RING OFFSET PORTS | 300160006 | --- | 300160006D | 300160006DR |
| #1- 7/8" O-RING REAR PORTS | 300160007 | 300160007R | 300160007D | 300160007DR |
| #2- 1/2" BSP.F OFFSET PORTS | 300160008 | --- | 300160008D | --- |
| #3- 1/2" BSP.F OFFSET MANIFOLD PORTS | 300160009 | --- | 300160009D | --- |