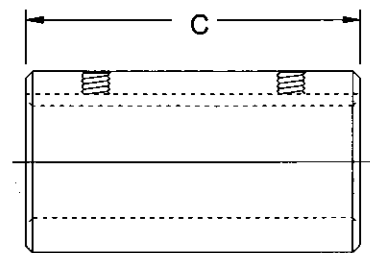
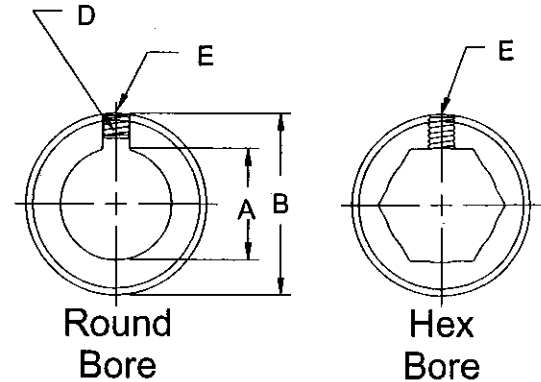


SHAFT COUPLERS



OMAHA, NEBRASKA
1-800-442-6009
FAX (402) 453-1740

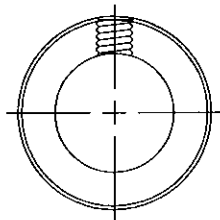
Stock No.	A	B	C	D	E	Wt. Lbs.
126-1000	5/8 HEX	1-1/2	2-1/2	NONE	2-1/4 X 20	.51
126-1200	3/4 HEX	1-5/8	3	NONE	2-1/4 X 20	.93
126-1400	7/8 HEX	1-3/4	3	NONE	2-1/4 X 20	1.32
126-1600	1 HEX	1-13/16	3	NONE	2-5/16 X 18	1.38
126-1800	1-1/8 HEX	2	4-1/2	NONE	2-5/16 X 18	2.69
126-2000	1-1/4 HEX	2-1/8	4-1/2	NONE	2-5/16 X 18	2.88
127-0800	1/2 RD	1-1/4	2	1/8	2-1/4 X 20	.56
127-1000	5/8 RD	1-1/2	2-1/2	3/16	2-1/4 X 20	1.00
127-1200	3/4 RD	1-5/8	3	3/16	2-1/4 X 20	1.38
127-1400	7/8 RD	1-3/4	3-1/2	3/16	2-1/4 X 20	1.75
127-1600	1 RD	1-5/8	3	1/4	2-5/16 X 18	1.06
127-1604	1 RD	1-13/16	4	1/4	2-5/16 X 18	1.94
127-1800	1-1/8 RD	2	4-1/2	1/4	2-5/16 X 18	2.69
127-1900	1-3/16 RD	2	4-1/2	1/4	2-5/16 X 18	2.50
127-2000	1-1/4 RD	2-1/8	4-1/2	1/4	2-5/16 X 18	2.88
127-2005	1-1/4 RD	2-1/8	4-1/2	5/16	2-5/16 x 18	2.80
127-2200	1-3/8 RD	2-5/16	4-1/2	5/16	2-3/8 X 16	3.38
127-2300	1-7/16 RD	2-5/16	4-1/2	3/8	2-3/8 X 16	3.19
127-2400	1-1/2 RD	2-1/2	4-1/2	3/8	2-3/8 X 16	3.88
127-2600	1-5/8 RD	2-5/8	4-1/2	3/8	2-3/8 X 16	4.13
127-2800	1-3/4 RD	2-3/4	4-1/2	3/8	2-3/8 X 16	4.38
127-3100	1-15/16 RD	3-5/16	4-1/2	1/2	2-1/2 X 13	7.00
127-3200	2 RD	3-5/16	4-1/2	1/2	2-1/2 X 13	6.83



Material: Mild Steel

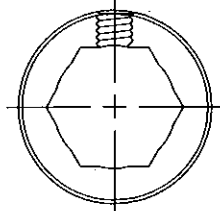
SET COLLARS

Round Bore

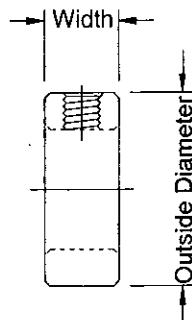
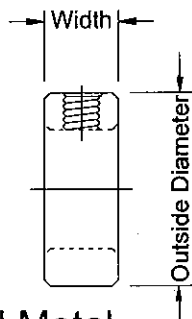


Material: Powdered Metal

Hex Bore



Material: Mild Steel



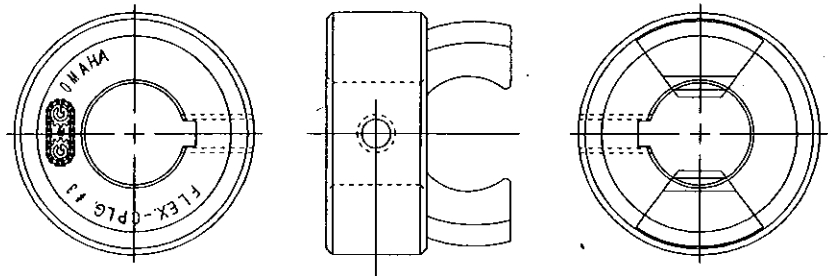
Stock No.	Bore	Outside Dia.	Width	Setscrew Size	Wt. Lbs.
152-0400	1/4 RD	1/2	9/32	10-32	.01
152-0500	5/16 RD	5/8	11/32	10-32	.02
152-0600	3/8 RD	3/4	3/8	1/4 x 20	.03
152-0700	7/16 RD	7/8	7/16	1/4 x 20	.05
152-0800	1/2 RD	1	1/2	1/4 x 20	.06
152-0900	9/16 RD	1-1/8	9/16	1/4 x 20	.13
152-1000	5/8 RD	1-1/8	9/16	5/16 x 18	.13
152-1100	11/16 RD	1-3/8	5/8	5/16 x 18	.19
152-1200	3/4 RD	1-3/8	5/8	5/16 x 18	.13
152-1300	13/16 RD	1-1/2	5/8	5/16 x 18	.19
152-1400	7/8 RD	1-1/2	5/8	5/16 x 18	.19
152-1500	15/16 RD	1-5/8	5/8	5/16 x 18	.19
152-1600	1 RD	1-5/8	5/8	5/16 x 18	.19
152-1700	1-1/16 RD	1-3/4	5/8	5/16 x 18	.25
152-1800	1-1/8 RD	1-3/4	5/8	5/16 x 18	.25
152-1900	1-3/16 RD	2	11/16	5/16 x 18	.38
152-2000	1-1/4 RD	2	11/16	5/16 x 18	.32
152-2100	1-5/16 RD	2-1/8	3/4	3/8 x 16	.38
152-2200	1-3/8 RD	2-1/8	3/4	3/8 x 16	.38
152-2300	1-7/16 RD	2-1/4	3/4	3/8 x 16	.44
152-2400	1-1/2 RD	2-1/4	3/4	3/8 x 16	.44
152-2600	1-5/8 RD	2-1/2	13/16	3/8 x 16	.56
152-2800	1-3/4 RD	2-3/4	7/8	1/2 x 13	.69
152-3000	1-7/8 RD	2-3/4	7/8	1/2 x 13	.63
152-3100	1-15/16 RD	3	7/8	1/2 x 13	.83
152-3200	2 RD	3	7/8	1/2 x 13	.75
152H1000	5/8 HEX	1-1/2	9/16	5/16 x 18	.11
152H1200	3/4 HEX	1-5/8	5/8	5/16 x 18	.19
152H1400	7/8 HEX	1-3/4	5/8	5/16 x 18	.28
152H1600	1 HEX	1-13/16	5/8	5/16 x 18	.29
152H1800	1-1/8 HEX	2	5/8	5/16 x 18	.52
152H2000	1-1/4 HEX	2-1/8	11/16	3/8 x 16	.76



OMAHA, NEBRASKA
1-800-442-6009
FAX (402) 453-1740

CONEFLEX COUPLINGS

- ❑ Coneflex Couplings have a unique conical design principle which provides maximum bearing area and more evenly distributed loads when operating in misaligned conditions.
- ❑ Pressure surfaces of jaws are accurately die cast to form a cone segment.
- ❑ Coupling jaws and inserts maintain their relative position even under misaligned conditions. This allows uniform compression that results in longer life.
- ❑ Oil resistant high grade synthetic rubber inserts have similar pressure surfaces that conform to the die cast jaws. This provides an equalized and cushioned transfer of power.
- ❑ Coupling halves are manufactured from high tensile zinc so rust problems are eliminated.



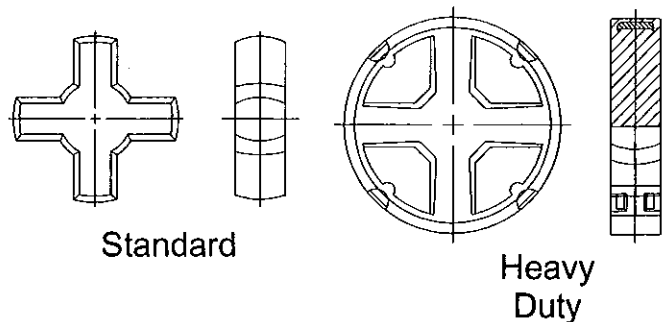
Coupling Halves

All Coneflex Coupling Halves are furnished with standard keyways and setscrews. Non standard keyways are available upon request.

Stock No.	Coupling No.	Bore Size	Wt. Lbs.	Stock No.	Coupling No.	Bore Size	Wt. Lbs.
233-0105	1	5/16	.11	233-0306	3	3/8	1.04
233-0107	1	7/16	.11	233-0307	3	7/16	1.04
233-0108	1	1/2	.09	233-0308	3	1/2	1.04
233-0110	1	5/8	.08	233-0309	3	9/16	1.03
233-0207	2	7/16	.41	233-0310	3	5/8	1.02
233-0208	2	1/2	.39	233-0311	3	11/16	1.01
233-0210	2	5/8	.38	233-0312	3	3/4	1.00
233-0212	2	3/4	.36	233-0314	3	7/8	.97
233-0214	2	7/8	.33	233-0315	3	15/16	.95
				233-0316	3	1	.93
				233-0318	3	1-1/8	.83
				233-0410	4	5/8	2.02
				233-0412	4	3/4	2.00
				233-0414	4	7/8	1.94
				233-0415	4	15/16	1.93
				233-0416	4	1	1.92
				233-0418	4	1-1/8	1.78
				233-0420	4	1-1/4	1.90
				233-0422	4	1-3/8	1.80
				233-0423	4	1-7/16	1.77
				233-0424	4	1-1/2	1.76
				233-0426	4	1-5/8	1.74

Coupling Inserts

Stock No.	Coupling No.	Insert Type	Wt. Lbs.
234-0200	2	Standard	.02
234-0300	3	Standard	.07
234-0400	4	Standard	.14
234-H100	1R	Heavy Duty	.03
234-H200	2R	Heavy Duty	.08
234-H300	3R	Heavy Duty	.20
234-H400	4R	Heavy Duty	.35

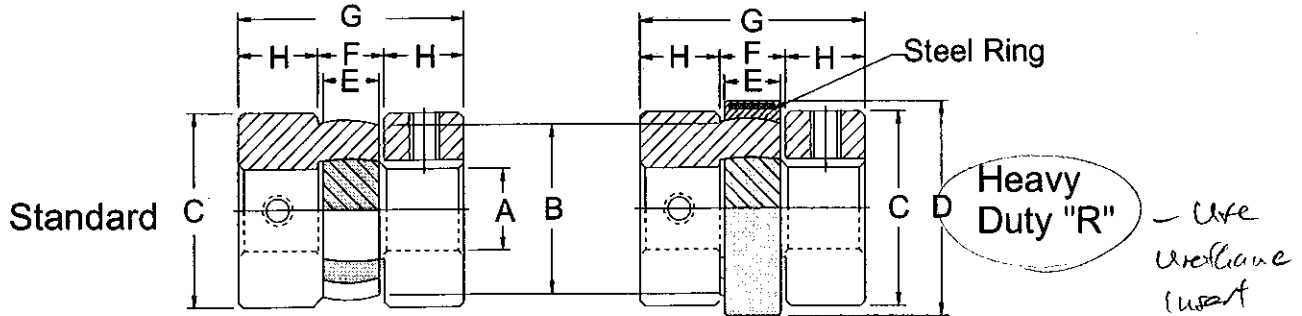


For ease of installation,
wet insert with water.

CONFLEX COUPLINGS

G&C
 OMAHA, NEBRASKA
 1-800-442-6009
 FAX (402) 453-1740

Complete Coupling Dimensions



Coupling No.	A Max.	B	C	D	E	F*	G	H
L050 1	5/8	1-1/16	1.13	-	3/8	7/16	1-9/16	9/16
1R	5/8	1-1/16	1.13	1-7/16	3/8	7/16	1-9/16	9/16
L075 2	7/8	1-5/8	1.75	-	1/2	9/16	2	23/32
2R	7/8	1-5/8	1.75	2-1/16	1/2	9/16	2	23/32
L095 3	1-1/8	2-1/4	2.35	-	3/4	7/8	2-7/8	1
3R	1-1/8	2-1/4	2.35	2-3/4	3/4	7/8	2-7/8	1
L100 4	1-5/8	2-15/16	3.00	-	7/8	1-1/16	3-9/16	1-1/4
4R	1-5/8	2-15/16	3.00	3-1/2	7/8	1-1/16	3-9/16	1-1/4
5R	2	3-11/16	3.78	4-5/8	1-1/8	1-3/8	4-3/8	1-1/2

*Recommended distance between shaft ends.

Horsepower Ratings

Coupling No.	100 RPM	870 RPM	1150 RPM	1750 RPM	3500 RPM
1	.04	.36	.48	.73	1.46
1 R	.06	.49	.64	.98	1.96
2	.13	1.16	1.54	2.34	4.68
2 R	.18	1.61	2.13	3.24	6.48
3	.42	3.70	4.89	7.45	14.90
3 R	.64	5.62	7.42	11.30	22.60
4	1.11	9.64	12.75	19.40	-
4 R	1.39	12.13	16.03	24.40	-
5 R	2.54	22.12	29.24	44.50	-

For extreme operating conditions, other insert materials may be recommended.

A complete Coneflex Coupling consists of two halves and one insert. Flex Coupling halves are identical for both standard and heavy duty inserts. Order each half and insert separately by stock number.

Service Factors

Uniform Service Factor 1.0 = Uniform Service

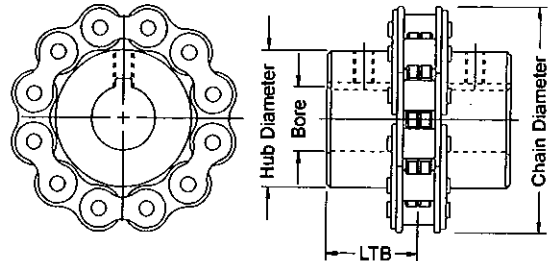
Service Class	Electric Motor and Turbine		Internal Combustion Engines			
			6 or More Cylinders		Less Than 6 Cylinders	
	10 Hours	24 Hours	10 Hours	24 Hours	10 Hours	24 Hours
U Uniform	1	1.5	1.5	2	2	2.5
M Moderate	1.5	2	2	2.5	2.5	3
H Heavy Shock	2	2.5	2.5	3	3	3.5

Service factors listed are intended only as a general guide

ROLLER CHAIN FLEXIBLE. COUPLER SPROCKETS

Coupler Sprocket Halves

Stock No.	Chain Size	No. of Teeth	Bore Size	Chain Dia.	Hub		Wt. Lbs.
					Dia.	LTB	
029-1000	50	10	5/8	2-19/32	1-9/16	1-1/8	.50
029-1200	50	10	3/4	2-19/32	1-9/16	1-1/8	.50
029-1400	50	10	7/8	2-19/32	1-9/16	1-1/8	.44
031-1000	60	10	5/8	3-1/8	1-11/16	1-1/4	.83
031-1200	60	10	3/4	3-1/8	1-11/16	1-1/4	.75
031-1400	60	10	7/8	3-1/8	1-11/16	1-1/4	.69
031-1500	60	10	15/16	3-1/8	1-11/16	1-1/4	.69
031-1600	60	10	1	3-1/8	1-11/16	1-1/4	.63
031-1800	60	10	1-1/8	3-1/8	1-11/16	1-1/4	.56
032-1000	60	12	5/8	3-9/16	2-1/8	1-7/16	1.50
032-1200	60	12	3/4	3-9/16	2-1/8	1-7/16	1.44
032-1400	60	12	7/8	3-9/16	2-1/8	1-7/16	1.38
032-1500	60	12	15/16	3-9/16	2-1/8	1-7/16	1.32
032-1600	60	12	1	3-9/16	2-1/8	1-7/16	1.25
032-1700	60	12	1-1/16	3-9/16	2-1/8	1-7/16	1.25
032-1800	60	12	1-1/8	3-9/16	2-1/8	1-7/16	1.19
032-2000	60	12	1-1/4	3-9/16	2-1/8	1-7/16	1.13
032-2200	60	12	1-3/8	3-9/16	2-1/8	1-7/16	1.00
032-2300	60	12	1-7/16	3-9/16	2-1/8	1-7/16	.88
033-1600	80	12	1	4-25/32	2-7/8	2	3.44
033-1800	80	12	1-1/8	4-25/32	2-7/8	2	3.25
033-2000	80	12	1-1/4	4-25/32	2-7/8	2	3.13
033-2200	80	12	1-3/8	4-25/32	2-7/8	2	3.00
033-2400	80	12	1-1/2	4-25/32	2-7/8	2	2.88
033-2800	80	12	1-3/4	4-25/32	2-7/8	2	2.50



A complete Roller Chain Flexible Coupler consists of two coupler halves and one coupler chain. Coupler halves are furnished with keyway and setscrew. Order each half and chain separately by stock numbers.

Roller Chain Flexible Coupler Sprocket Halves are available in other bore sizes and styles, or with hardened teeth.

SEND YOUR INQUIRIES

Coupler Chain

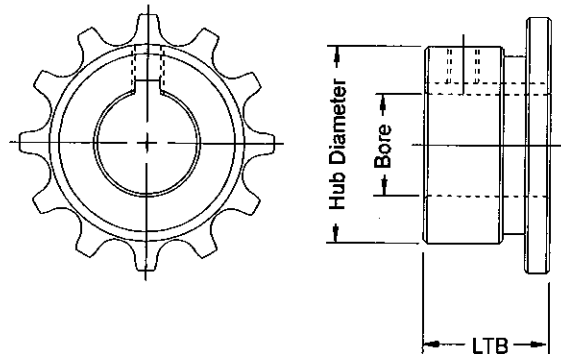
Stock No.	Chain Size	Fits No. of Teeth	Wt. Lbs.
030-1050	50	10	.38
030-1060	60	10	.56
030-1260	60	12	.69
030-1280	80	12	1.63

Roller Chain Flexible Coupler Halves are designed to fit chain furnished by G&G Manufacturing Company.

COUPLER SPROCKETS

These Coupler Sprockets are designed to fit Link-Belt #50 Coupler Chain.
Link-Belt #50 Chain is not available from G&G Manufacturing Company.

Stock No.	Chain Size	No. Teeth	Bore	Hub		Wt. Lbs.
				Dia.	LTB	
025-1000	50	12	5/8	1-15/16	1-1/4	.94
025-1200	50	12	3/4	1-15/16	1-1/4	.88
025-1400	50	12	7/8	1-15/16	1-1/4	.88
025-1600	50	12	1	1-15/16	1-1/4	.69
025-1800	50	12	1-1/8	1-15/16	1-1/4	.69
025-2000	50	12	1-1/4	1-15/16	1-1/4	.63
027-1600	50	16	1	2-17/32	1-7/16	1.88
027-2000	50	16	1-1/4	2-17/32	1-7/16	1.69

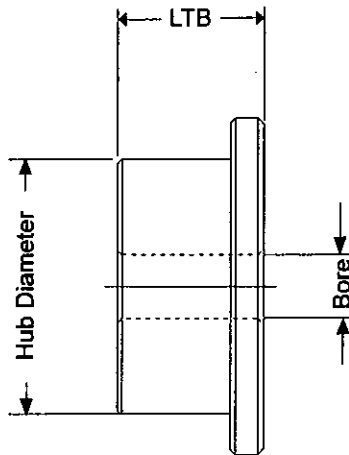


Furnished with standard keyway and setscrew.

DOUBLE ROLLER CHAIN COUPLER SPROCKETS



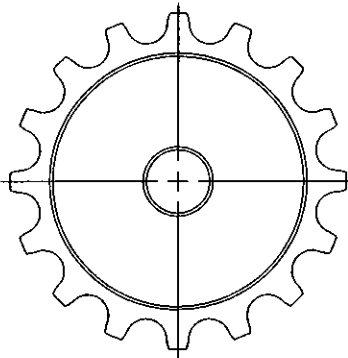
A complete Double Roller Chain Coupler Sprocket assembly consists of two coupler halves, one length of double roller chain and one cover. Each component is sold separately, and should be ordered by individual stock number.



Coupler Halves - Stock Bore

Stock No.	Chain Size	No. Teeth	Bore Size	Coupler Dia.	Hub		Max. RPM	Wt. Lbs.
					Dia.	LTB		
09401200	40	12	1/2	2-13/32	1-13/32	1-1/8	5000	.50
09401600	40	16	1/2	3-1/32	1-31/32	1-1/8	5000	1.00
09501600	50	16	5/8	3-25/32	2-1/2	1-7/16	4000	2.20
09501800	50	18	5/8	4-3/16	2-31/32	1-11/16	3600	3.50
09601800	60	18	1	5	3-1/2	1-7/8	3000	5.00
09602000	60	20	1	5-1/2	3-7/8	2	2500	6.50
09801800	80	18	1-1/8	6-21/32	4-9/16	2-3/8	2000	11.00
09802000	80	20	1-1/8	7-19/64	5-3/8	2-5/8	2000	16.30

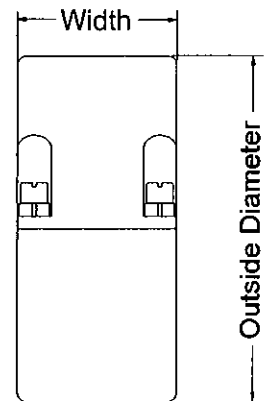
MATERIAL: SOLID STEEL WITH HARDENED TEETH.



Coupler Covers

Stock No.	Chain Size	No. Teeth	Outside Dia.	Width	Wt. Lbs.
094012CO	40	12	4	2	.78
094016CO	40	16	4	2	.92
095016CO	50	16	5-1/8	2-3/8	1.30
095018CO	50	18	5-1/8	2-3/8	1.30
096018CO	60	18	6-3/8	2-15/16	2.44
096020CO	60	20	6-3/8	2-15/16	2.44
098018CO	80	18	8-3/16	4	4.88
098020CO	80	20	8-3/16	4	4.88

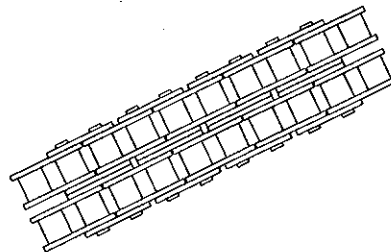
Covers include 2 aluminum cover halves, 4 seals, gaskets and all necessary hardware for installation.



Coupler Chain

Stock No.	Chain Size	No. Teeth	Wt. Lbs.
094012CH	40	12	.40
094016CH	40	16	.50
095016CH	50	16	1.20
095018CH	50	18	1.30
096018CH	60	18	2.20
096020CH	60	20	2.60
098018CH	80	18	5.30
098020CH	80	20	5.90

Includes connector link



SELECTION SUGGESTIONS

Double Roller Chain Couplers have a torque capacity which is more than the torque normally transmitted by the shafting that will fit each coupler bore range. Select the smallest coupler size which will accommodate both of your shafts. For reversing operations, shock or pulsating loads, or other severe operating conditions, select the next larger coupler size.

CAUTION: All rotating power transmission products are potentially dangerous and must be properly guarded for the speeds and applications for which they are intended. G&G Manufacturing Company Double Roller Chain Coupler Sprockets should not be operated at speeds exceeding 5000 FPM rim speed.



DOUBLE ROLLER CHAIN COUPLER SPROCKETS

A complete Double Roller Chain Coupler Sprocket assembly consists of two coupler halves, one length of double roller chain and one cover. Each component is sold separately, and should be ordered by individual stock number.

Coupler Halves - Bored to Size

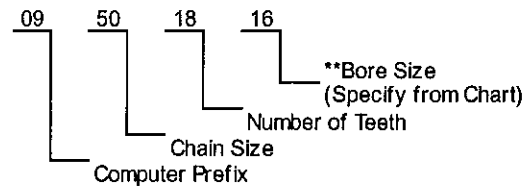
MATERIAL: SOLID STEEL WITH HARDENED TEETH.

Stock No.	Chain Size	No. Teeth	Stock Finished Bore Sizes (Includes Standard KW & SS)	Coup. Dia.	Hub		OA Length	A	Wt. Lbs.
					Dia.	LTB			
094012**	40	12	1/2, 5/8, 3/4	2-13/32	1-13/32	1-1/8	2-17/32	9/32	.40
094016**	40	16	5/8, 3/4, 7/8, 15/16, 1, 1-1/8, 1-3/16, 1-1/4	3-1/32	1-13/32	1-1/8	2-17/32	9/32	.80
095016**	50	16	3/4, 7/8, 1, 1-1/8, 1-3/16, 1-1/4, 1-3/8, 1-7/16, 1-1/2, 1-5/8	3-25/32	2-1/2	1-7/16	3-1/4	3/8	1.60
095018**	50	18	3/4, 7/8, 1, 1-1/8, 1-3/16, 1-1/4, 1-3/8, 1-7/16, 1-1/2, 1-5/8, 1-3/4, 1-7/8, 1-15/16	4-3/16	2-31/32	1-11/16	3-3/4	3/8	2.40
096018**	60	18	1, 1-1/8, 1-3/16, 1-1/4, 1-3/8, 1-7/16, 1-1/2, 1-5/8, 1-3/4, 1-7/8, 1-15/16, 2, 2-1/8, 2-3/16, 2-1/4, 2-3/8	5	3-1/2	1-7/8	4-3/16	7/16	4.80
096020**	60	20	1-1/8, 1-1/4, 1-1/2, 1-3/4, 1-15/16, 2-1/8, 2-3/8, 2-7/16, 2-5/8	5-1/2	3-7/8	2	4-7/16	7/16	5.20
098018**	80	18	1-1/8, 1-3/4, 1-15/16, 2, 2-1/8, 2-3/8, 2-7/16, 2-5/8, 2-7/8, 2-15/16	6-21/32	4-9/16	2-3/8	5-21/64	37/64	9.50
098020**	80	20	1-7/16, 2-3/16, 2-7/16, 2-11/16, 2-15/16, 3-1/8, 3-3/8, 3-7/16	7-19/64	5-3/8	2-5/8	5-33/64	37/64	13.40

**Specify appropriate 2 digit bore size from Bore Size Chart.

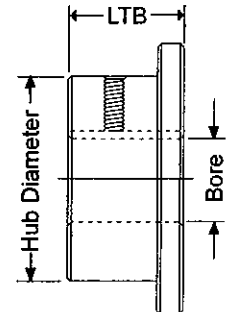
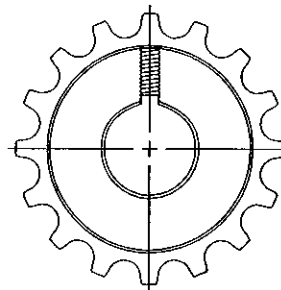
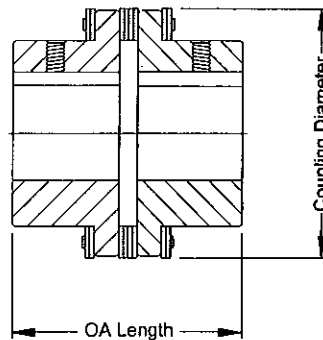
Bore Size Identification System

EXAMPLE:



Additional bore sizes and styles, non standard keyways, and extra setscrews are available by quotation.

Bore Size Chart		
08 = 1/2"	23 = 1-7/16"	38 = 2-3/8"
10 = 5/8"	24 = 1-1/2"	39 = 2-7/16"
12 = 3/4"	26 = 1-5/8"	42 = 2-5/8"
14 = 7/8"	28 = 1-3/4"	43 = 2-11/16"
15 = 15/16"	30 = 1-7/8"	46 = 2-7/8"
16 = 1"	31 = 1-15/16"	47 = 2-15/16"
18 = 1-1/8"	32 = 2"	50 = 3-1/8"
19 = 1-3/16"	34 = 2-1/8"	54 = 3-3/8"
20 = 1-1/4"	35 = 2-3/16"	55 = 3-7/16"
22 = 1-3/8"	36 = 2-1/4"	



SELECTION SUGGESTIONS

Double Roller Chain Couplers have a torque capacity which is more than the torque normally transmitted by the shafting that will fit each coupler bore range. Select the smallest coupler size which will accommodate both of your shafts. For reversing operations, shock or pulsating loads, or other severe operating conditions, select the next larger coupler size.

CAUTION: All rotating power transmission products are potentially dangerous and must be properly guarded for the speeds and applications for which they are intended. G&G Manufacturing Company Double Roller Chain Coupler Sprockets should not be operated at speeds exceeding 5000 FPM rim speed.