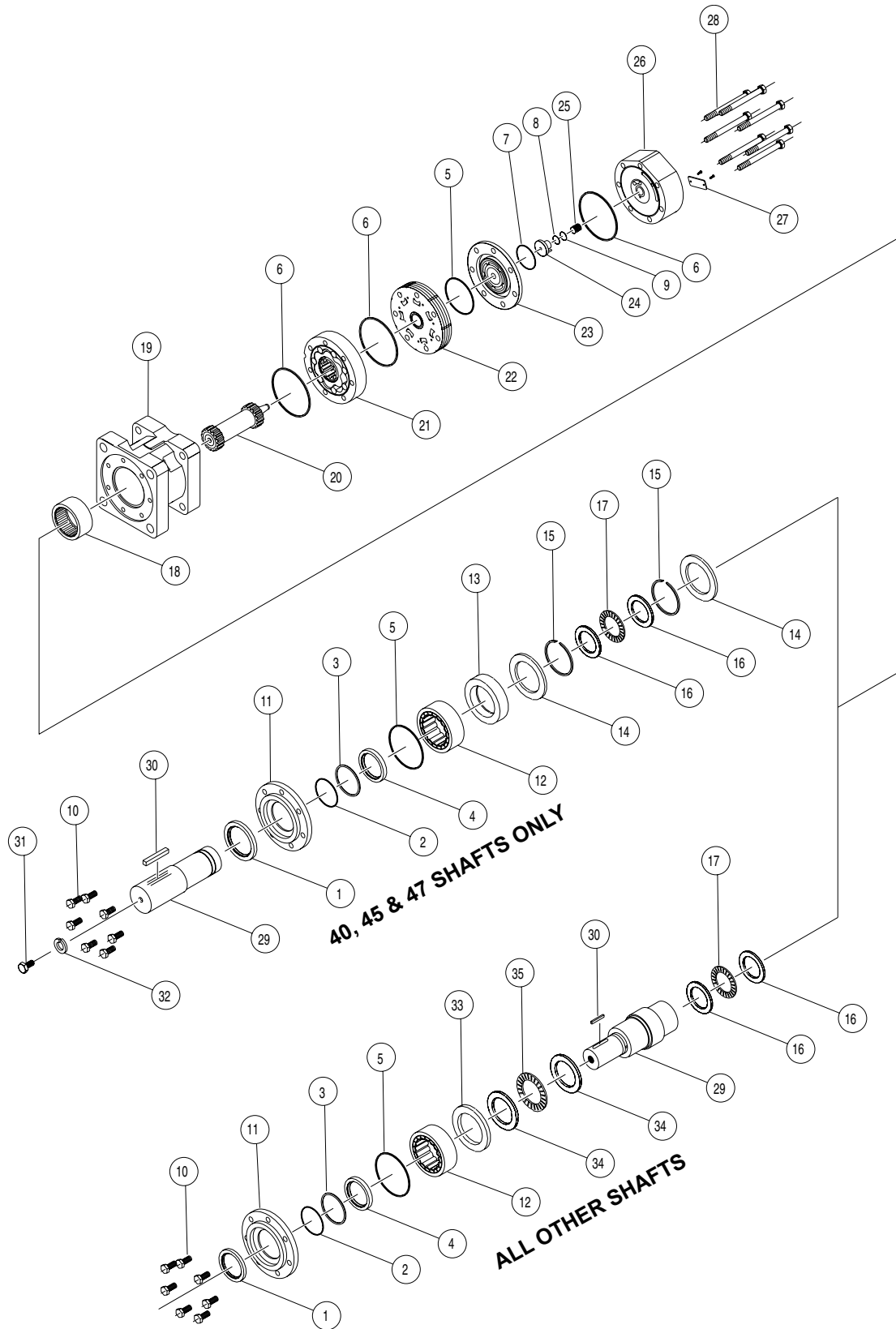


DT (700) Series



NOTE: Some older model DT 2.5" bearing motors may use different components than those shown. For assistance in determining service parts for these motors, please contact Technical Support at (270) 885-1110.

DT (700) SERIES MOTOR COMPONENTS

SEAL KIT 70066251

DESCRIPTION	EXP. VIEW ITEM #	KIT
DUST SEAL	1	
METAL BACKUP SHIM	2	
TEFLON BACKUP SEAL	3	ITEMS # 1-9
SHAFT SEAL	4	INCLUDED IN
PILOT RING SEAL	5	SEAL KIT
BODY SEALS (3)	6	70066251
COMMUTATOR SEAL	7	
TEFLON BACKUP SEAL	8	
O-RING SEAL	9	
NOTE: Motors assembled before Jan. 5, 1994 have low pressure shaft seals. These motors will lack items 2 and 3 as shown in the exploded view drawing. To upgrade these motors to the new high pressure shaft seal configuration, order the kits below. The kit includes a standard PT666251 seal kit and a new revision pilot ring that must be used with the new seals.		
For #C2 & C8 housing motors		70066251P
For #E2 & E8 housing motors		70066251PY

MISCELLANEOUS KITS

DESCRIPTION	EXP. VIEW ITEM #	KIT
DUST SEAL	1	700018070
PILOT RING BOLTS (7)	10	700018071
PILOT RING (5.00" DIA.)	11	700018064
PILOT RING (125MM DIA.)	11	700018097
FRONT HOUSING BEARING	12	700018056
BEARING SPACER	13	700018101
RETAINING WASHER	14	700018061
SNAP RING	15	700018062
THRUST WASHER	16	700018059
THRUST BEARING	17	700018057
REAR HOUSING BEARING	18	700018060
MANIFOLD	22	700668002
COMMUTATOR ASSEMBLY	23	700668003
ENDCOVER PISTON	24	700668004
PISTON SPRING	25	700018046
SPACER	33	700018115
FRONT THRUST WASHER	34	700018113
FRONT THRUST BEARING	35	700018114
1000 PSI RELIEF VALVE	NOT SHOWN	500018228
2000 PSI RELIEF VALVE	NOT SHOWN	500018231
3000 PSI RELIEF VALVE	NOT SHOWN	500018221
1.125-18 UNEF SLOTTED NUT	NOT SHOWN	700018038
1.125-18 UNEF SOLID NUT	NOT SHOWN	700018054
M42 X 3 CASTLE NUT	NOT SHOWN	700669303

ROTORS, DRIVE LINKS, AND BOLTS

WHEN CHANGING MOTOR DISPLACEMENTS, A MATCHING ROTOR, DRIVE LINK, AND BOLT SET KIT MUST BE ORDERED.

EXPLODED VIEW ITEM #	21	21	20	28
DISPLACEMENT	STANDARD ROTOR KIT	FREETURN ROTOR KIT	DRIVE LINK KIT	BOLT SET KIT
300	700662019	700662019F	700140019	700664019
375	700662025	700662025F	700140025	700664025
470	700662028	700662028F	700140028	700664028
540	700662033	700662033F	700140033	700664033
750	700662046	700662046F	700140046	700664046
930	700662056	---	700140056	700664056
1K1	700662066	700662066F	700140066	700664066
1K5	700662091	---	700140091	700664091
2K1	700662099	---	700140099	700664099

HOUSING KITS

DESCRIPTION	EXP. VIEW ITEM #	HOUSING KIT
#C2 & C8- STANDARD SAE C MOUNT WITH 5" PILOT	19	700130006
#E2 & E8- STANDARD SAE C MOUNT WITH 125mm PILOT	19	700130007

SHAFTS AND RELATED COMPONENTS KITS

SHAFT KITS COME WITH RELATED SHAFT COMPONENTS (i.e. keys, nuts, etc.)

TO ORDER INDIVIDUAL SHAFT COMPONENTS (i.e. keys, nuts, bolts, washers or wire rings) USE THE KIT NUMBER FOR EACH INDIVIDUAL PART.

EXPLODED VIEW ITEM #	29	30	NOT SHOWN	31	32
DESCRIPTION	SHAFT KIT	KEY KIT	NUT KIT	BOLT KIT	WASHER KIT
#31- 1-1/2" TAPERED	700110020	700669100		---	---
#41- 50MM STRAIGHT	700110021	700669102		---	---
#32- 1-1/2" STRAIGHT (EURO)	700110022	700669106		---	---
#45- 60MM TAPERED	700110023	700669103		---	700669304
#36- 40MM STRAIGHT	700110024	700669104		---	---
#54- 40MM STRAIGHT (S)	700110054	700669104	SEE MISC.	---	---
#40- 2-1/4" STRAIGHT	700110025	700669105	KITS LIST	700669305	700669306
#47- 2-1/4" STRAIGHT (S)	700110035	700669105	ABOVE	700669305	700669306
#42- 16 TOOTH SPLINE	700110026	---		---	---
#48- 16 TOOTH SPLINE (S)	700110056	---		---	---
#34- 17 TOOTH SPLINE (EURO)	700110028	---		---	---
#49- 17 TOOTH SPLINE (S)	700110058	---		---	---
#30- 1-1/2" STRAIGHT (USA)	700110032	700669101		---	---
#23- 14 TOOTH SPLINE	700110036	---		---	---
#09- 14 TOOTH SPLINE (S)	700110031	---		---	---
#33- 17 TOOTH SPLINE (USA)	700110038	---		---	---

ENDCOVER KITS

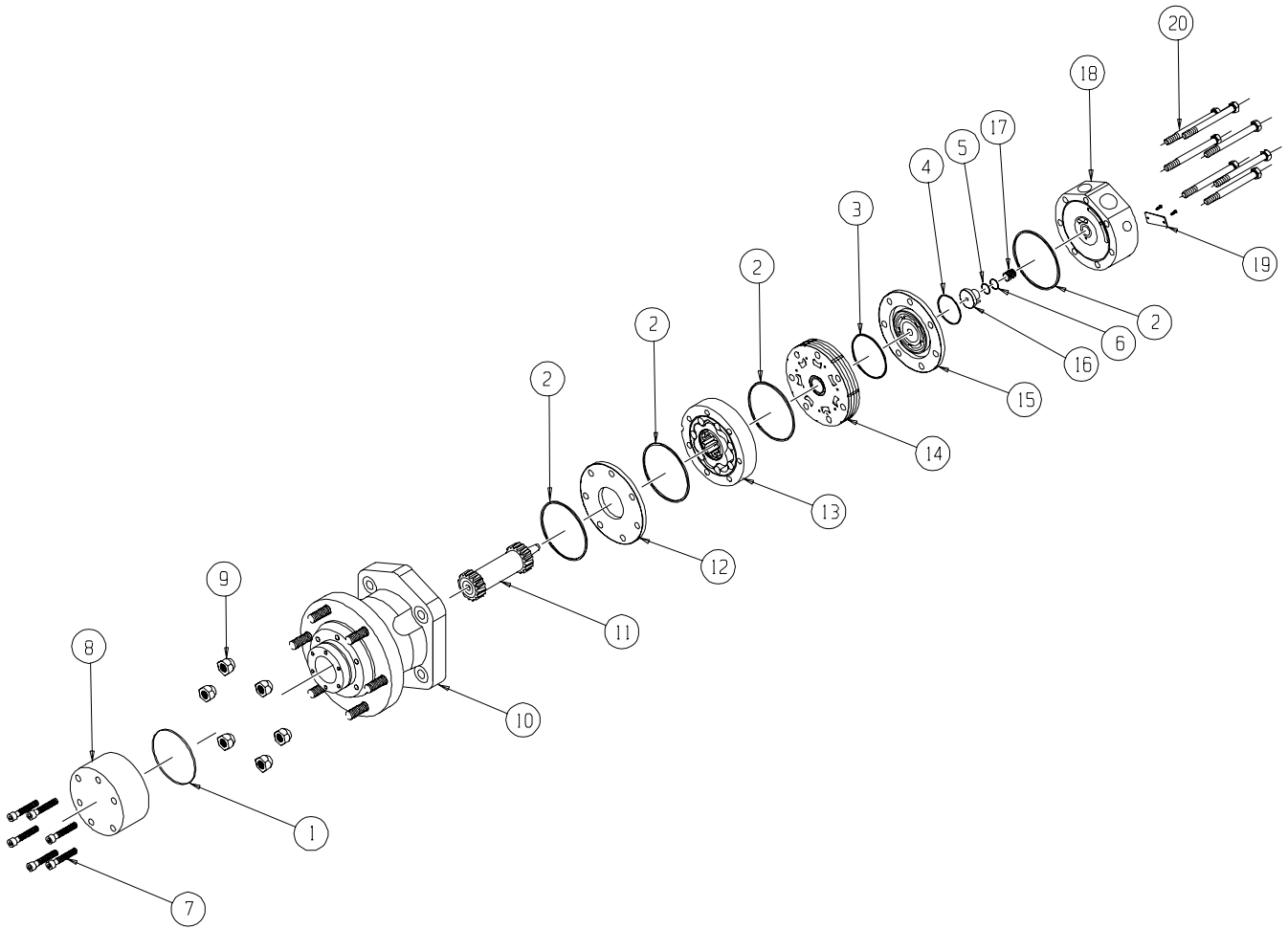
(EXPLODED VIEW ITEM #26.)

ENDCOVER KITS COME ASSEMBLED WITH EXPLODED VIEW ITEM #S 8, 9, 24 & 25.

TO ORDER A RELIEF VALVE FOR THE VALVE CAVITY ENDCOVERS, SEE THE MISCELLANEOUS KITS LISTING ABOVE FOR RELIEF VALVE KIT #S.

DESCRIPTION	STANDARD ENDCOVER KIT	VALVE CAVITY ENDCOVER KIT	INTERNAL DRAIN ENDCOVER KIT	VALVE CAVITY & INTERNAL DRAIN ENDCOVER KIT
#1- 7/8" O-RING REAR PORTS	700160000	700160000R	700160000D	700160000DR
#3- MANIFOLD PORTS, D-SHAPED	---	---	700160003D	---
#5- 1-1/16" O-RING RADIAL PORTS	700160005	700160005R	700160005D	700160005DR
#2- 3/4" BSP.F RADIAL PORTS	700160007	700160007R	700160007D	700160007DR
#6- 1-1/16" O-RING PARALLEL PORTS	700160008	700160008R	---	---
#7- 3/4" BSP.F PARALLEL PORTS	700160009	---	---	---

DT 40 (740) Series



DT (740) SERIES MOTOR COMPONENTS

SEAL KIT 700666300

DESCRIPTION	EXP. VIEW ITEM #	KIT
CAP SEAL	1	
BODY SEALS (4)	2	
MANIFOLD SEAL	3	ITEMS # 1-6
COMMUTATOR SEAL	4	INCLUDED IN
O-RING SEAL	5	SEAL KIT
BACKUP SEAL	6	700666300

MISCELLANEOUS KITS

DESCRIPTION	EXP. VIEW ITEM #	KIT
CAPSCREW	7	700018123
FLANGE CAP	8	700018122
LUG NUT	9	500018151
DIVIDER PLATE	12	700012000
MANIFOLD	14	700668002
COMMUTATOR ASSEMBLY	15	700668003
ENDCOVER PISTON	16	700668004
PISTON SPRING	17	700018046
1000 PSI RELIEF VALVE	NOT SHOWN	500018228
2000 PSI RELIEF VALVE	NOT SHOWN	500018231
3000 PSI RELIEF VALVE	NOT SHOWN	500018221

ROTORS, DRIVE LINKS, AND BOLTS

WHEN CHANGING MOTOR DISPLACEMENTS, A MATCHING ROTOR, DRIVE LINK, AND BOLT SET KIT MUST BE ORDERED.

EXPLODED VIEW ITEM #	13	13	11	20
DISPLACEMENT	STANDARD ROTOR KIT	FREETURN ROTOR KIT	DRIVE LINK KIT	BOLT SET KIT
300	700662019	700662019F	700140019	700665019
375	700662025	700662025F	700140025	700665025
470	700662028	700662028F	700140028	700665028
540	700662033	700662033F	700140033	700665033
750	700662046	700662046F	700140046	700665046
930	700662056	---	700140056	700665056
1K1	700662066	700662066F	700140066	700665066
1K5	700662091	---	700140091	700665091
2K1	700662099	---	700140099	700665099

HOUSING / HUB ASSEMBLY KITS

*NOTE: BECAUSE OF THE SPECIAL TOOLS AND FIXTURES REQUIRED, THE HOUSING/HUB ASSEMBLY IS NOT FIELD SERVICEABLE FOR REPAIR WORK, THE HOUSING/HUB ASSEMBLY MUST BE RETURNED TO THE FACTORY. TO INSURE THE FASTEST POSSIBLE TURN AROUND TIME, PLEASE CONTACT THE WHITE HYDRAULICS TECHNICAL SUPPORT DEPARTMENT AT 800-323-7298 FOR RETURN INSTRUCTIONS. FOR BREAKDOWN SITUATIONS REQUIRING IMMEDIATE REPAIRS, NEW HOUSING / HUB ASSEMBLIES ARE AVAILABLE FOR IMMEDIATE SHIPMENT.

DESCRIPTION	EXP. VIEW ITEM #	HOUSING KIT
#W2 & W8- HOUSING / HUB ASSEMBLY - 6.00 Dia. B.C.	10	700134140

ENDCOVER KITS

(EXPLODED VIEW ITEM #18)

ENDCOVER KITS COME ASSEMBLED WITH EXPLODED VIEW ITEMS # 5, 6, 16 & 17.

TO ORDER A RELIEF VALVE FOR THE VALVE CAVITY ENDCOVERS, SEE THE MISCELLANEOUS KITS LISTING ABOVE FOR RELIEF VALVE KIT #'S

DESCRIPTION	STANDARD ENDCOVER KIT	VALVE CAVITY ENDCOVER KIT	INTERNAL DRAIN ENDCOVER KIT	VALVE CAVITY & INTERNAL DRAIN ENDCOVER KIT
#1- 7/8" O-RING REAR PORTS	700160000	700160000R	700160000D	700160000DR
#5- 1-1/16" O-RING RADIAL PORTS	700160005	700160005R	700160005D	700160005DR
#2- 3/4" BSP.F RADIAL PORTS	700160007	700160007R	700160007D	700160007DR
#6- 1-1/16" O-RING PARALLEL PORTS	700160008	700160008R	---	---
#7- 3/4" BSP.F PARALLEL PORTS	700160009	---	---	---